

CHARISMA NOVA — JONGERT



Builder: JONGERT

Year Built: 2006

Model: Performance Sailboat

Price: PRICE ON APPLICATION

Location: Spain

LOA: 79' 10" (24.32m)

Beam: 21' 3" (6.47m)

Min Draft: 9' 11" (3.00m)

Cruise Speed: 9 Kts. (10 MPH)

Max Speed: 11 Kts. (13 MPH)

Our experienced yacht broker, Andrey Shestakov, will help you choose and buy a yacht that best suits your needs **CHARISMA NOVA — JONGERT** from our catalogue. Presently, at Shestakov Yacht Sales Inc., we have a wide variety of yachts available on our sale's list. We also work in close contact with all the big yacht manufacturers from all over the world.

If you would like to buy a yacht **CHARISMA NOVA — JONGERT** or would like help answering any questions concerning purchasing, selling or chartering a yacht, please call **+1(954)274-4435**

TABLE OF CONTENTS

TABLE OF CONTENTS	2
SPECIFICATIONS	3
Overview	3
Basic Information	3
Dimensions	3
Speed, Capacities and Weight	3
Accommodations	3
Hull and Deck Information	4
Engine Information	4
DETAILED INFORMATION	5
Hull and Deck	5
Engine	5
Electrical and Plumbing systems	6
Navigational Systems	6
Accommodations	7
Rigging and Sails	7
Accessories	8
Exclusions	10
Disclaimer	10
PHOTOS	11
CONTACTS	17
Contact details	17
Telephones	17
Office hours	17
Address	17

SPECIFICATIONS

Overview

Basic Information

Category: Performance Sailboat

Sub Category: Performance Sailboat

Model Year: 2006

Year Built: 2006

Country: Spain

Dimensions

LOA: 79' 10" (24.32m)

LWL: 69' 11" (21.29m)

Beam: 21' 3" (6.47m)

Min Draft: 9' 11" (3.00m)

Speed, Capacities and Weight

Cruise Speed: 9 Kts. (10 MPH)

Max Speed: 11 Kts. (13 MPH)

Max Speed Range: 2300 Kts.

Displacement: 132277.3572 Pounds

Water Capacity: 528.344104 Gallons

Fuel Capacity: 1056.688208 Gallons

Accommodations

Total Cabins: 3

Total Berths: 6

Sleeps: 6

Total Heads: 3

Crew Cabin: 1

Crew Berths: 2

Crew Sleeps: 2

Hull and Deck Information

Hull Material: Aluminum

Hull Color: Blue

Exterior Designer: Doug Petersen

Engine Information

Manufacturer: Vetus-Deutz

Model: 210PS 209hp

Fuel Type: Diesel

DETAILED INFORMATION

Hull and Deck

HULL and DECK

Aluminium hull, superstructure and wheelhouse

DECK EQUIPMENT

7 X Lewmar winches, 4 hydraulic, 3 manual

Windlass

65kg anchor with 90m x 13mm chain

Deck shower

Bathing ladder

Gangway

Engine

Vetus Deutz, 210 PS. 154Kw/209 hp. 6 cylinder

4 blade propeller

3503 hours at February 2017

Maximum speed 11 knots

Cruising speed 9 knots

Consumption 18 litres/hour cruising

Range 2300 nm

Tankage

Fuel 4000 litres

Fresh water 2000 litres

Black and grey water 350 litres

Hamann Super Mini waste treatment system

HEM watermaker, 180 litres/hour

120 litre hot water heater

40,000 BTU air conditioning system

Eberspaecher central heating system, 18kW

Bowthruster – Hydromar, 20kW

Electrical and Plumbing systems

Tankage

Fuel 4000 litres

Fresh water 2000 litres

Black and grey water 350 litres

Hamann Super Mini waste treatment system

HEM watermaker, 180 litres /hour

120 litre hot water heater

40,000 BTU air conditioning system

Eberspaecher central heating system, 18kW

Bowthruster – Hydromar, 20kW

Navigational Systems

Furuno autopilot

Furuno compass

Furuno GPS plotter

Nera Satnav

Furuno Radar, Blackbox radar (high resolution)

Interphase Sonar

Meteoliner barograph

Echo sounder

Furuno wind, speed, direction/close hauled and running/rudder angle indicator

Furuno VHF Radiotel

Icom SSB-Radiotel

Nera Satcom, fleet system

HP Officejet printer/fax all in one system

AIS Easy Ais

PC + Maxsea Timezero

Accommodations

4 cabins in total, 3 for guests, 1 for crew

Special attention was paid to the layout design of the yacht with modern interior styling. Completely separated from the guest's and crew areas, the Master Cabin is located to the stern with an own companionway from the deck saloon. There is an office area, twin beds, bathroom with shower and a separate toilet area. Stairs from the deck saloon forward, lead to the two guest cabins on board CHARISMA NOVA. They are equipped with twin beds, both en suite and a further double cabin which is used for crew.

Rigging and Sails

Rod rigging

Mast height 30m

Nirvana Spars mast and boom for fully batten sail configuration

Boom 10m

Hydraulic reefing system (forestay and staysail)

SAILS

Main 148 sq.m., fully battened with lazyjacks

Genoa 130g 167 sq.m.

Jib (73 sq.m.)

Staysail 72 sq.m.

Gennaker

Accessories

Entertainment systems

TV Samsung

B&O DVD/CD player and radio

Samsung Sat receiver

Galley Equipment

Bosch refrigerator

Bosch deep freezer

Coolmatic bottle cooler

Siemens microwave

Saeco coffee machine

Siemens cooker

Siemens dishwasher

Siemens washing machine and dryer

Novamarine 330 tender

Yamaha 15 hp outboard engine

Snorkelling Equipment

Bauer Dive Compressor 220V plus diving equipment

Awning and canvas cover

Sun mattresses

Waeco cool-freezer box in Lazarette

SAFETY EQUIPMENT

Liferaft

8 x Kadematic life jackets

EPIRB

Flares

Safe

Bilge alarm

Fire extinguisher system

REFIT AND UPGRADE HISTORY

2017

10 Mt boom lazy-bag with rigid profile for the main sail. This permanent system allows very easy set & haul of the main.

2nd generator Fisher Panda with 11 Kw power and sound proof box. The generator is placed in the engine room.

Full Paint Job 2012 and still in a good state

Exclusions

Owner's personal belongings.

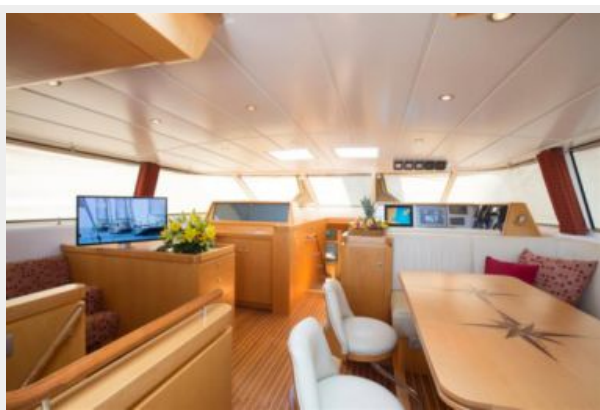
Disclaimer

The Company offers the details of this vessel or yacht in good faith but cannot guarantee or warrant the accuracy of this information nor warrant the condition of the vessel. A buyer should instruct his representatives, agents, or his surveyors, to investigate such details as the buyer desires validated. This vessel or yacht is offered subject to prior sale, price change, or withdrawal without notice.

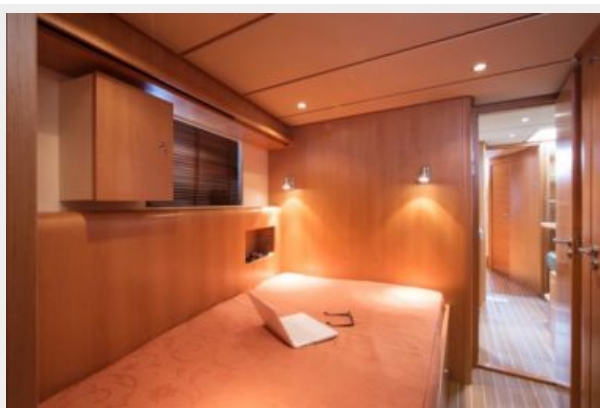
PHOTOS

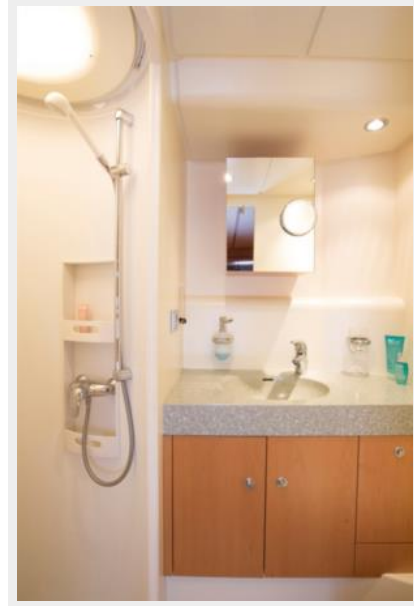












CONTACTS

Andrey Shestakov, leading yacht broker of the sales department of Shestakov Yacht Sales Inc. Shestakov Yacht Sales Inc., the official representative of the Miami/Fort Lauderdale FL headquarters.

Contact details

Email: andrey@shestakovyachtsales.com

Web: shestakovyachtsales.com/en/

Telephones

USA: +1(954)274-4435

Office hours

Monday – Saturday: **9:00 - 21:00** EDT

Sunday: **closed**

Address



Harbour Towne Marina, 850 NE 3rd St,
STE 213, Dania, FL 33004