

ASHLEY JEAN — HYDRA-SPORTS



Builder: [Hydra-Sports](#)

Year Built: 2006

Model: Runabout

Price: PRICE ON APPLICATION

Location: United States

LOA: 29' 0" (8.84m)

Beam: 9' 8" (2.95m)

Max Draft: 1' 10" (0.56m)

Cruise Speed: 27 Kts. (31 MPH)

Max Speed: 43 Kts. (49 MPH)

Our experienced yacht broker, Andrey Shestakov, will help you choose and buy a yacht that best suits your needs **Ashley Jean — Hydra-Sports** from our catalogue. Presently, at Shestakov Yacht Sales Inc., we have a wide variety of yachts available on our sale's list. We also work in close contact with all the big yacht manufacturers from all over the world.

If you would like to buy a yacht **Ashley Jean — Hydra-Sports** or would like help answering any questions concerning purchasing, selling or chartering a yacht, please call **+1(954)274-4435**

TABLE OF CONTENTS

TABLE OF CONTENTS	2
SPECIFICATIONS	3
Overview	3
Basic Information	3
Dimensions	3
Speed, Capacities and Weight	3
Accommodations	3
Hull and Deck Information	4
Engine Information	4
DETAILED INFORMATION	5
Extras	5
Engines	5
Manufacturer Description	5
Exclusions	7
Disclaimer	7
PHOTOS	8
CONTACTS	10
Contact details	10
Telephones	10
Office hours	10
Address	10

SPECIFICATIONS

Overview

This 2006 Hydra-Sports 29 vx is a fishing and comfort machine, Low hours (700). Boat is in beautiful shape. Maintained every 75 hours, waxed three times per season, Motors had exhaust systems changed last year, underwater lights installed in off season this past winter, Garmin GPS, radar, and sonar fish finder, pumps were replaced last year. Not to many boats out there are as clean as this one. Feel free to text or call with any questions. DYSID:3023419

Basic Information

Category: Runabout

Sub Category: Cuddy

Model Year: 2006

Year Built: 2006

Country: United States

Dimensions

LOA: 29' 0" (8.84m)

Beam: 9' 8" (2.95m)

Max Draft: 1' 10" (0.56m)

MFG Length: 29' 8" (9.04m)

Speed, Capacities and Weight

Cruise Speed: 27 Kts. (31 MPH)

Cruise Speed RPM: 4000 Kts.

Max Speed: 43 Kts. (49 MPH)

Max Speed RPM: 6100 Kts.

Water Capacity: 27 Gallons

Fuel Capacity: 300 Gallons

Accommodations

Total Cabins: 1

Total Heads: 1

Hull and Deck Information

Hull Material: Fiberglass

Engine Information

Engines: 2

Manufacturer: Yamaha

Model: 250 four stroke

Engine Type: Outboard

Fuel Type: Gas/Petrol

DETAILED INFORMATION

Extras

waxed twice per year

underwater lights

mounted life raft on top of boat

out riggers

garmin electronics (through hull transducer), radar, gps

Custom memory foam bedding with sheets covers and topper made

all lights replaced with LED

all pumps have been changed last year

exhaust systems change two years ago.

VST filters changed

Engines

2006 twin yamaha 250 four stroke (700 hours). Motors were meticulously maintained. They were hooked up to fresh water for 20 min. every time after they were ran and startron was used every fill up. Serviced every 75 hours.

Manufacturer Description

Draft: 1 ft. 10 in.

Beam: 9 ft. 8 in. **Fuel tank capacity:** 300 **Water tank capacity:** 27 **Standard features:**

CABIN Anchor Locker Door Cabin Entry Steps - Teak Cabin Sliding Entry Door - Acrylic - Lockable Carbon Monoxide Detector Courtesy Lights Cup Holders - Stainless Steel (2) Dinette Table With Filler Cushions Converts To Full Size Berth Dry Storage Below Forward V-Berth Forward V-Berth Shelves With Removable Cushions Forward V-Berth Pivoting Reading Lights With Dimmer Switch - Port/Stbd Forward V-Berth Fabric Wrapped Valance Hanging Locker - Stbd Headliner With Overhead Lighting Liner - Full Fiberglass - Skid Resistant Mid Cabin Berth With Cushion, Privacy Curtain, 12V Lighting And Access To Mechanical Equipmentport, Stbd, And Below Port/Stbd Settee With Soft Foam Cushions Convert To Twin Pilot Berths Comfortably Sleeping Two Stereo Speakers (2) **COCKPIT** Aft Seat - Fold Away With Cushion

And Backrest Aft Sink Area W/Cutting Board Baitwell - Insulated - 35 Gallon Recirculating With 1100 Gph Pump And Light Cockpit Bolsters Port/Stbd Courtesy Lights Drink Holders - Stainless Steel Entry Light Switch At Helm And Transom Fish Boxes - (2) Insulated With Reinforced Hatches And Overboard Drains Hardtop Frp With (5) Rod Holders, Spreader Lights (3), Overhead Lighting, Pfd Storage, Plates For Outriggers, Dual Horns, & Ster Helm Seat - Stbd W/Flip Up Bolster Lounge Seat Port - Converts To Sunpad Molded In Skid Resistant Steps (2) To Forward Deck Rod Storage - Under Gunwale Port/Stbd Self Draining Cockpit - Skid Resistant - With Oversized Scuppers Stove - Single Burner Electric Storage Compartment Port-Aft Of Lounge Seat (Access To Generator Option) Tackle Storage Drawers Toe Kick Under Gunwale Transom Door **CONSOLE & HELM STATION** Accessory Plugs (2) 12 Volt Compass Electronics Accessory Fuse Block With Ground At Helm Footrest Full Instrumentation- Tachometer, Speedometer, Fuel, Volt, Trim, Water Pressure And Systems Check* Glove Box - Lockable Steering Wheel Custom Aluminum W/Knob Power Assisted Steering Std With Yamaha Engines Only Stereo Remote Control - Digital Switch Panel With Water Resistant Switches And 4 Accessory Switches Vhf Radio- Ray 53 Flush Mount *Systems Check Not Available With All Engines **CONSTRUCTION** All Composite (Wood Free) Structure Hand-Laid Fiberglass Lamination Utilizing Premium Gelcoat Finish, Pre-Cut Bi-Axial Fabric, Woven Roving And Kevlar (R) Reinforce Integrated Structural Grid System Constructed Of Finished Fiberglass, Bonded To Hull With Methacrylate Adhesive And Injected Wit Integral Composite Transom **ENGINE & SYSTEMS** Battery Charger - 30 Amp Battery Parallel Switch Battery Storage Trays Battery Switches Bilge Pumps With Automatic Float Switches (2) 1500 Gph Aft; (1) 500 Gph Fwd Fuel Tanks - Aluminum Fuel/Water Separators Grounding System - Dynaplate (R) Hoses - Wire Reinforced And Double Clamped Below The Water Line Navigation Lights - Led Oil Tanks (2 Stroke Only) Outboard Motors- Factory Rigged Propellers - Stainless Steel Pressurized Fresh Water System 27 Gal. With Deck Fill Water And Transom Shower Raw Water Washdown System Sealed Aft Deck Hatch With Access To Pump Room Shore Power Inlets (2) 30 Amp With 50' Shore Cords Steering - Tilt Hydraulic - Dual Ram Submersible Rated Electrical Connections Trim Tabs Heavy Duty With Indicators Water Heater (6 Gal) Windshield Wipers (Port/Stbd) **GALLEY** Ac Panel Dc Panel Granulon Countertop W/Molded In Sink, Hot/Cold Faucet And Hand Hold Outlet Ac Gfci Protected Refrigerator - Dual Voltage Sirius Satellite Radio System - Clarion Am/Fm Cd Player, Sirius Satellite Receiver, Antenna Upper Storage Cabinet - Cherry Woodgrain Laminate **HEAD** Fiberglass Head With Powered Ventilation Mirror - Full Length Outlet Ac Gfci Protected Overboard Discharge And Dockside Pumpout Overhead Lighting Sealand Vacuflush Head With 10 Gal. Holding Tank, Towel Ring Tp Holder Upper Cabinet Storage Vanity With Granulon Top And Backsplash, Molded In Sink With Hot/Cold Faucet/Shower Combo And Storage Below **HULL AND DECK** Anchor Locker - Self Draining Bilge Compartment Lighting Bow Anchor Roller With Cleat Bow And Stern Eyes- Stainless Steel Bow Rail - Welded - Stainless Steel Cleats - Stainless Steel Pop Up (6) Deck Hatch Opening With Screen Foam Flotation Heavy Duty Dive Ladder Rod Holders Stainless Steel Gunwale Mount (4) Rub Rail - High Impact Swim Platform - Integrated Thru Hull Fittings - Bronze (Underwater) Thru Hull Fittings - Stainless Steel (Above Waterline) White Hull Gelcoat Windshield - Walk-Thru - Tempered Glass Windlass - Includes Anchor, 150' Rope/Chain Combo, 300' Stainless Anchor, Shackles, Switched At Helm

d every fill up.

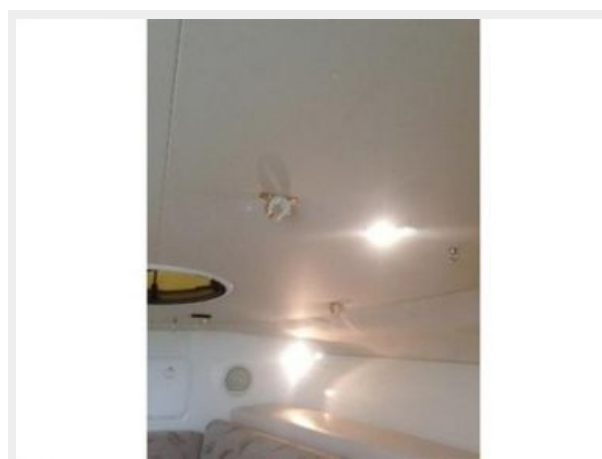
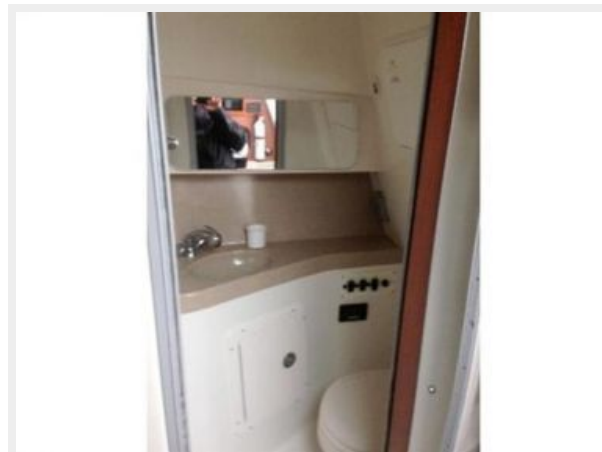
Exclusions

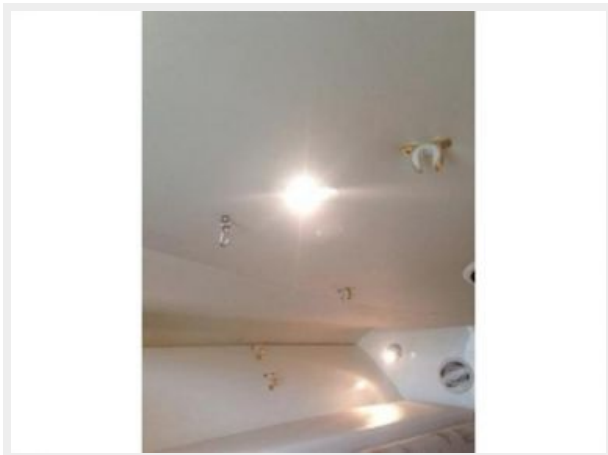
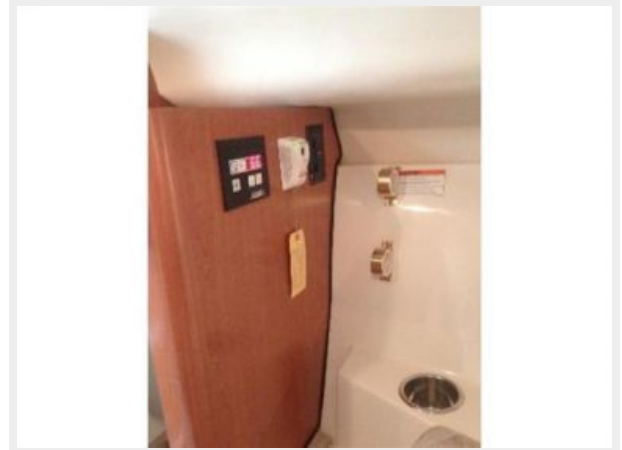
Owner's personal belongings.

Disclaimer

The Company offers the details of this vessel or yacht in good faith but cannot guarantee or warrant the accuracy of this information nor warrant the condition of the vessel. A buyer should instruct his representatives, agents, or his surveyors, to investigate such details as the buyer desires validated. This vessel or yacht is offered subject to prior sale, price change, or withdrawal without notice.

PHOTOS





CONTACTS

Andrey Shestakov, leading yacht broker of the sales department of Shestakov Yacht Sales Inc. Shestakov Yacht Sales Inc., the official representative of the Miami/Fort Lauderdale FL headquarters.

Contact details

Email:
andrey@shestakovyachtsales.com

Web: shestakovyachtsales.com/en/

Telephones

USA: **+1(954)274-4435**

Office hours

Monday – Saturday: **9:00 - 21:00 EDT**

Sunday: **closed**

Address



Harbour Towne Marina, 850 NE 3rd St,
STE 213, Dania, FL 33004