

# YELLOWFIN 36 OFFSHORE W/HELM MASTE — YELLOWFIN



**Builder:** YELLOWFIN

**Year Built:** 2013

**Model:** Center Console

**Price:** PRICE ON APPLICATION

**Location:** United States

**LOA:** 36' 0" (10.97m)

**Beam:** 10' 0" (3.05m)

**Min Draft:** 1' 8" (0.51m)

**Max Draft:** 3' 0" (0.91m)

**Cruise Speed:** 40 Kts. (46 MPH)

**Max Speed:** 55 Kts. (63 MPH)

Our experienced yacht broker, Andrey Shestakov, will help you choose and buy a yacht that best suits your needs **Yellowfin 36 Offshore w/HELM MASTER — YELLOWFIN** from our catalogue. Presently, at Shestakov Yacht Sales Inc., we have a wide variety of yachts available on our sale's list. We also work in close contact with all the big yacht manufacturers from all over the world.

If you would like to buy a yacht **Yellowfin 36 Offshore w/HELM MASTER — YELLOWFIN** or would like help answering any questions concerning purchasing, selling or chartering a yacht, please call **+1(954)274-4435**

---

# TABLE OF CONTENTS

---

TABLE OF CONTENTS	2
SPECIFICATIONS	3
Overview	3
Basic Information	3
Dimensions	3
Speed, Capacities and Weight	3
Hull and Deck Information	4
Engine Information	4
DETAILED INFORMATION	5
Overview	5
Electronics & Navigation Equipment	5
Fishing Equipment	6
Deck & Hull Equipment	6
Mechanical & Electrical Equipment	7
Exclusions	7
Disclaimer	8
PHOTOS	9
CONTACTS	17
Contact details	17
Telephones	17
Office hours	17
Address	17

---

# SPECIFICATIONS

---

## Overview

---

- Yamaha F300's ,Helm Master® Joystick & Extended Warranties
- **Engine Warranties thru July 2019**
- Silver Hull Wrap
- Extensive Furuno, Fusion & JL Audio Electronics

## Basic Information

---

**Category:** Center Console

**Model Year:** 2013

**Year Built:** 2013

**Country:** United States

**Vessel Top:** Hardtop

**Cockpit:** Yes

## Dimensions

---

**LOA:** 36' 0" (10.97m)

**Beam:** 10' 0" (3.05m)

**Min Draft:** 1' 8" (0.51m)

**Max Draft:** 3' 0" (0.91m)

**MFG Length:** 36' 8" (11.18m)

## Speed, Capacities and Weight

---

**Cruise Speed:** 40 Kts. (46 MPH)

**Cruise Speed RPM:** 4000 Kts.

**Cruise Speed Range:** 550

**Max Speed:** 55 Kts. (63 MPH)

**Max Speed RPM:** 5500 Kts.

**Displacement:** 9500 Pounds

**Water Capacity:** 30 Gallons

**Fuel Capacity:** 525 Gallons

---

## Hull and Deck Information

---

**Hull Material:** Composite Fiberglass

**Deck Material:** Fiberglass

**Hull Configuration:** Deep Vee

**Hull Color:** Silver/White

**Hull Finish:** Aluminum

**Hull Designer:** Wylie Nagler

---

## Engine Information

---

**Engines:** 3

**Manufacturer:** Yamaha

**Model:** F300

**Engine Type:** Outboard

**Fuel Type:** Gas/Petrol

---

# DETAILED INFORMATION

---

## Overview

---

- Yamaha F300's ,Helm Master® Joystick & Extended Warranties
- Silver Hull Wrap
- Extensive Furuno, Fusion & JL Audio Electronics
- Engine Warranties thru July, 2019

This is a highly customized example of the famed 36 Yellowfin Offshore and maybe the most heavily equipped for offshore fishing ever built. Her hull is finished in Matterhorn White with a solid silver wrap with royal blue trim. Triple Yamaha F-300's provide provide exhilarating speeds up to 55 knots (63.3 mph) and an effortless cruise of 40 knots (46 mph) at 4000 rpm burning 35 gph or 1.3 mpg.

All Yamaha scheduled services have been performed on a timely basis and transferable warranties are good thru July, 2019. She features Yamaha's Helm Master® integrated joystick control system (\$40,000 option) for effortless maneuvering, whether at the dock or backing down. Originally sponsored by Furuno and Yamaha, the electronic equipment is state of the art and engine maintenance has been impeccable .

**This one of a kind Yellowfin 36 Offshore is a must see for the serious fisherman.**

## Electronics & Navigation Equipment

---

- (2) Furuno TZT14 14.1" Touch screen Muti Function Displays (new 2015)
- Furuno DFF1 Black Box Echosounder w/ flush mounted B265 1kW transducer
- Furuno DRS4D 4kW, 36n.m., 24" UHD digital radome radar
- Furuno BBWX2 Sirius Satellite Weather receiver
- Furuno RD33 4.3" navigational data organizer instrument
- Furuno GP33 4.3" GPS/WAAS navigator
- Furuno FA50 Black Box Class B AIS transponder
- Furuno NAVpilot 7011 autopilot
- (2) Furuno FM4000 VHF radios w/DSC functionality
- Yamaha Command Link Plus® LCD triple engine data display
- (2) Shakespeare VHF antennas
- 5" Ritchie compass
- Fusion MS-IP700 stereo system w/built-in Ipod player & Sirius satellite radio
- Fusion MS-NRX200i remote control at console
- JL Audio M600/6, 6 Channel Class D Full-Range Marine Amplifier, 600 Watts
- JL Audio M600/1, monoblock Class D Marine Subwoofer Amplifier, 600 Watts
- (6) JL Audio M650-CCX, 6.5" speakers
- (2) JL Audio M101B5, 10" subwoofer drivers

- SPOT HUG GPS security system
- C-Zone ship's systems digital control panel

---

## Fishing Equipment

---

- Taco Grand Slam radial outrigger bases
- Lee's 18' carbon fiber telescoping outrigger poles
- California leaning post w/live bait well/drink box, moved forward 2" for more cockpit space, (2) cup holders, tackle center
- Transom live bait well, 55 gallon w/lexan top
- Hard top rod holders: (5) aft edge of hard top, (2) port, (2) starboard rear top legs, (2) Kingfish rod holders on hard top
- Gunwale rod holders: (7) port, (7) starboard each side of cockpit from console to transom, (4) port side of transom live well, (1) starboard, (3) on bow behind anchor locker, (3) port, (3) starboard at bow, (4) port, (4) starboard, forward of console, (36) total on cap
- Storage rod holders: (5) aft edge of leaning post, (7) port, (7) starboard on console sides, (19) total
- Powder coated center transom rod holder
- (2) Starboard side tackle storage cabinets w/(6) Plano box storage racks
- Custom rigging/fish cleaning tray w/gimbal mount into aft transom rod holder
- Dual rod tubes for gaff, flyrod storage, port & starboard aft under gunwales
- Coffin box w/cushioned top & electric lift w/dual rams
- 530 quart macerated, insulated fish box
- 36" Rowan boxes port & starboard
- (1) bow, (4) aft Elec-Tra-Mate 15 amp electric reel outlets
- (1) bow, (2) aft Elec-Tra-Mate 30 amp electric reel outlets

---

## Deck & Hull Equipment

---

- Key West Console w/molded fiberglass hardtop, royal blue underside & rear support legs
- Lumitec white/blue led spreader lights, (2) aft, (2) midship, (1) forward, separate switches for midship & forward
- Pop-up running light fixture on bow
- (4) led tri-color (white, blue, red) recessed hardtop lights
- (8) tri-color courtesy lights (white, red, blue)
- (4) Lumitec Seablaze underwater lights, (2) aft, (2) down (white)
- LED light in console
- GEMLUX® 13" Bluewater stainless steel (2) spoke wheel w/speed knob, tilting
- Strataglass wind screen
- Royal blue canvas console covers
- Full length grab rails under hardtop
- (2) stainless steel cup holders

- Recessed anodized aluminum grab rail around bow
- Fortress anchor secured in forward anchor locker w/rode
- Snap-in canvas covers, port & starboard outboard, below gunwale shelves
- Side coaming pads, midship, aft
- Fold-out trash bin
- (6) GEMLUX® 8" 316 stainless steel pop-up cleats
- Garelick EEz-In II integrated transom retractable shaft boarding ladder
- Sliding transom pocket door
- Forward console cushioned seating
- Forward console lift-up hatch to storage/electronics compartment
- All deck hatch lids gasketed
- O-ring gutter system
- (2) 30" life rings w/rescue throw bag rope & emergency strobe lights
- Port & starboard fresh & salt water wash down spigots w/coil hoses, fore & aft
- GEMLUX® 316 stainless steel latches, hinges
- GEMLUX® 316 stainless steel thru hull fittings
- GEMLUX® ball valves
- GEMLUX® 2" 316 stainless steel gas fills
- (2) stainless steel D rings
- 13" wide covering boards
- Black rub rail

---

## Mechanical & Electrical Equipment

---

- Triple Yamaha 4.2L, 300 hp Offshore Outboard engines w/digital controls
- Yamaha Helm Master® digital joystick control system
- Yamaha Command Link Plus® digital electronic engine controls
- Yamaha Y-COP® theft deterrent system
- High performance trim tabs
- Teleflex hydraulic steering
- (2) 12V lighter plugs at helm
- (3) pump sea chest w/Y valve back up, (2) 1½" intakes for live well feeds
- (3) Rule 1100 GPH baitwell pumps (1 back up)
- (2) Rule 1200 GPH bilge pumps
- (4) Odyssey Group 31 AGM batteries (3 engine start + house)
- Gil Offshore battery trays
- Yellowfin battery management system
- DeltaVolt® Professional PS4, 60 amp, 4 bank battery charger
- Tinned copper wiring w/ Duetsch connectors

---

## Exclusions

---

Owner's personal belongings.

## Disclaimer

---

The Company offers the details of this vessel or yacht in good faith but cannot guarantee or warrant the accuracy of this information nor warrant the condition of the vessel. A buyer should instruct his representatives, agents, or his surveyors, to investigate such details as the buyer desires validated. This vessel or yacht is offered subject to prior sale, price change, or withdrawal without notice.



# PHOTOS

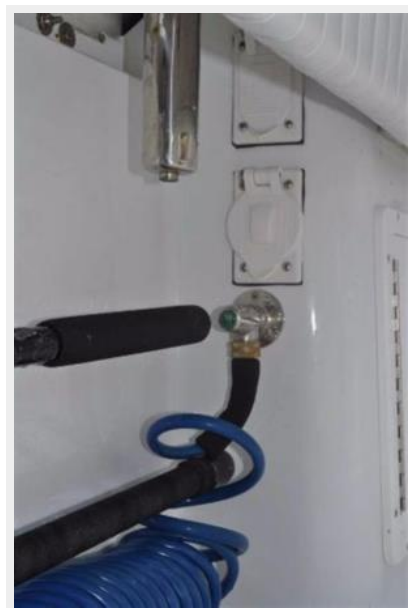
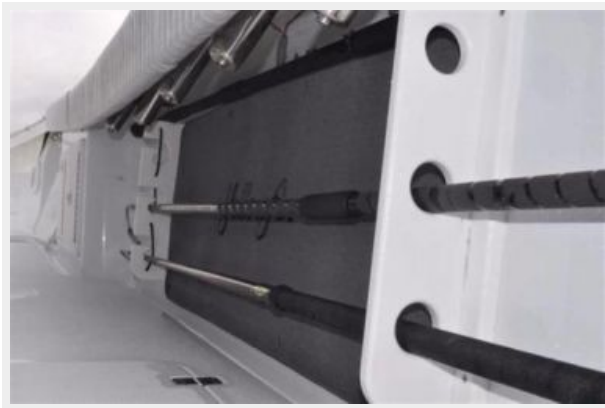






















# CONTACTS

---

Andrey Shestakov, leading yacht broker of the sales department of Shestakov Yacht Sales Inc. Shestakov Yacht Sales Inc., the official representative of the Miami/Fort Lauderdale FL headquarters.

## Contact details

---

Email: [andrey@shestakovyachtsales.com](mailto:andrey@shestakovyachtsales.com)

Web: [shestakovyachtsales.com/en/](http://shestakovyachtsales.com/en/)

## Telephones

---

USA: +1(954)274-4435

## Office hours

---

Monday – Saturday: **9:00 - 21:00** EDT

Sunday: **closed**

## Address

---



Harbour Towne Marina, 850 NE 3rd St,  
STE 213, Dania, FL 33004