

SALT AIR — PRESTIGE



Builder: PRESTIGE

Year Built: 2014

Model: Motor Yacht

Price: PRICE ON APPLICATION

Location: United States

LOA: 50' 0" (15.24m)

Beam: 14' 9" (4.50m)

Max Draft: 3' 5" (1.04m)

Cruise Speed: 24 Kts. (28 MPH)

Max Speed: 29 Kts. (33 MPH)

Our experienced yacht broker, Andrey Shestakov, will help you choose and buy a yacht that best suits your needs **Salt Air — PRESTIGE** from our catalogue. Presently, at Shestakov Yacht Sales Inc., we have a wide variety of yachts available on our sale's list. We also work in close contact with all the big yacht manufacturers from all over the world.

If you would like to buy a yacht **Salt Air — PRESTIGE** or would like help answering any questions concerning purchasing, selling or chartering a yacht, please call **+1(954)274-4435**

TABLE OF CONTENTS

TABLE OF CONTENTS	2
SPECIFICATIONS	4
Overview	4
Basic Information	4
Dimensions	4
Speed, Capacities and Weight	5
Accommodations	5
Hull and Deck Information	5
Engine Information	5
DETAILED INFORMATION	6
Manufactured provided Description	6
Salon	6
Galley	6
Master Stateroom - Aft	7
Master Head	7
VIP Stateroom - Forward	7
Guest Stateroom	7
Guest Head	8
Crew Quarters	8
Cockpit and Deck	8
Fly Bridge	8
Features and Options	9
Exclusions	9
Disclaimer	9
PHOTOS	11
CONTACTS	21
Contact details	21
Telephones	21

Office hours	21
Address	21

SPECIFICATIONS

Overview

JUST REDUCED \$25,000!!! Available for LEASE/CHARTER/PURCHASE

Captain Maintained 2014 Prestige 500 Flybridge

Fresh bottom Paint and Fresh Wax March 2017

Volvo IPS 600 - Recent Service - Low Hours

Motivated Seller!

The Prestige 500 hull was designed for Volvo Penta IPS power. This one features IPS 600's which provide comfortable cruising speeds and a satisfying top end. The joystick allows for easy maneuvering. Engine Warranty until April 2020!

- **Crew Quarters**
- **Loaded with options**
- **Underwater Lights**
- **Wi-Fi Extender**
- **Full RayMarine package at both stations**
- **Stern Controls**

Call to see her today!

Basic Information

Category: Motor Yacht

Sub Category: Flybridge

Model Year: 2014

Year Built: 2014

Country: United States

Fly Bridge: Yes

Cockpit: Yes

Dimensions

LOA: 50' 0" (15.24m)

Beam: 14' 9" (4.50m)

Max Draft: 3' 5" (1.04m)

Speed, Capacities and Weight

Cruise Speed: 24 Kts. (28 MPH)

Max Speed: 29 Kts. (33 MPH)

Displacement: 30080 Pounds

Water Capacity: 168 Gallons

Holding Tank: 32 Gallons

Fuel Capacity: 344 Gallons

Accommodations

Total Cabins: 3

Total Heads: 2

Hull and Deck Information

Hull Material: Fiberglass

Engine Information

Engines: 2

Manufacturer: Volvo Penta

Model: IPS 600

Engine Type: Inboard

Fuel Type: Diesel

DETAILED INFORMATION

Manufactured provided Description

This model, first launched in Düsseldorf, Germany, won many trophies as:

- "Best Interior Design" in September at the World Yachts Trophies Awards in Cannes.
- "Best Motor Yacht" in October, at the Nautical Design Awards in Milan.
- "Best of the Best" 2011 in Hainan by the magazine Robb Repor.
- "Motor Yacht of the Year" in January, at the official ceremony of the Motor boat of the year award, in the category of yachts up to 55 feet in length.

Salon

- Light oak wood interior
- Custom carpet with wood flooring underneath
- 60,000 BTU Air conditioning with reverse cycle heat
- Pull down blinds
- Concealed flat screen 26" TV
- Over head lighting
- (2) Over head hatches
- (2) Sofas
- (2) Attached chairs
- Fixed table
- (2) Electric opening windows
- Helm seat
- Bose System

Galley

- Electric cook top
- Upright refrigerator/ freezer
- Double sink
- Microwave
- Custom carpet
- (3) panel sliding door
- Bottle storage
- Overhead cabinet
- Island with storage

Master Stateroom - Aft

- Private staircase to master suite
- Queen berth
- Mattress battens
- Custom bed spreads
- Carpeting
- Custom 46" flat screen TV
- Bose 3 Audio system
- Air conditioning with reserve cycle heat
- Hanging closet
- Walk-in closet
- Drawer storage
- Table with build-in chairs
- Opening side windows
- Ensuite head

Master Head

- Vanity with sink
- Mirrored storage
- Jabsco head
- Teak deck in stand-up shower

VIP Stateroom - Forward

- Queen island berth splits for two separate berths
- Flat screen TV
- Custom carpeting
- Custom soft goods
- Window blinds
- Air conditioning with reverse cycle heat
- (2) Hanging closets
- (2) Reading lamps
- Overhead hatch
- Private entry to guest head

Guest Stateroom

- Twin berths
- Custom carpeting

- Custom soft goods
- Hanging locker
- Reading lights
- Air conditioning controls

Guest Head

- Dual entry guest head from VIP & companionway
- Mirrored storage cabinet
- Storage under sink
- Teak deck in stand-up shower
- Jabsco head

Crew Quarters

- Cockpit entry to crew cabin
- Bunk
- Head with stall shower
- Window with vent
- Storage compartment

Cockpit and Deck

- Teak deck
- Teak cockpit table
- Hot & cold shower
- Teak swim platform
- Hatch to engine room
- Aft docking station
- Stairs to bridge
- Starboard side winch
- Built-in cockpit bench
- Large walk-around
- Forward sun pad
- Windlass
- Custom fender racks

Fly Bridge

- Custom helm electronic box

- Refrigerator
- Teak table
- Large sun pad
- L-Shaped seating
- Bimini top
- BBQ with sink
- Bridge door

Features and Options

- Three Private Staterooms/Two Heads
- Three Control Stations: Lower Helm, Flybridge and Cockpit with Bow Thruster Control
- Bow Thruster
- Approximately 34 Gallons per hour Fuel Consumption at Cruise Speed of 24 Knots
- Private Entrance to Owners Suite
- Skipper Cabin with Air-Conditioning & Separate Head
- Tropical Air-Conditioning - 69,000 BTU
- Electronics Package: Multifunction Dual Raymarine E - 125 and E 127 Displays at Lower Helm, E - 125 at Flybridge, HD Digital Radar, Sonar, Auto Pilot, Sirius Weather, Dual Station Raymarine 260E VHF Radios.
- Retractable Sun Awning - Cockpit
- Washer/Dryer Combo
- Ice Maker
- Inverter
- Starboard Side Aft Mooring Windlass
- 13.5 Kw Generator w/Sound Shield
- Fly Bridge Galley w/Grill, Refrigerator & Wet Bar
- Cockpit Enclosure
- Glendenning Cable Management System
- Bose Acoustimas Audio System - Saloon & Master Stateroom
- Comfortable Captain Quarters

Exclusions

Owner's personal belongings.

Disclaimer

The Company offers the details of this vessel or yacht in good faith but cannot guarantee or warrant the accuracy of this information nor warrant the condition of the vessel. A buyer should instruct his representatives, agents, or his surveyors, to investigate such details as the buyer desires validated. This vessel or yacht is offered subject to prior sale, price change, or withdrawal

without notice.

PHOTOS

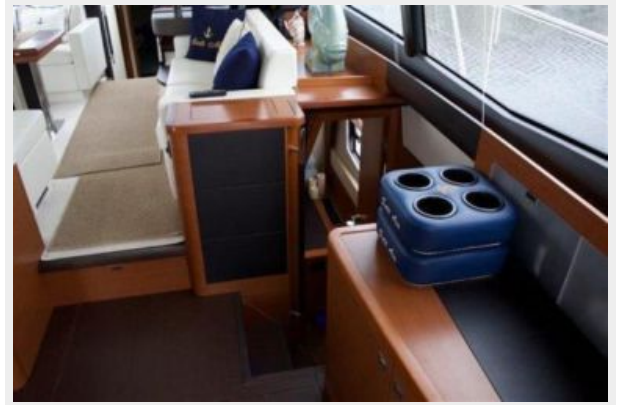




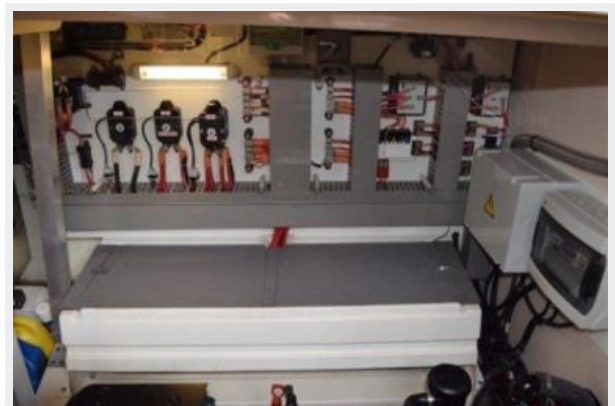
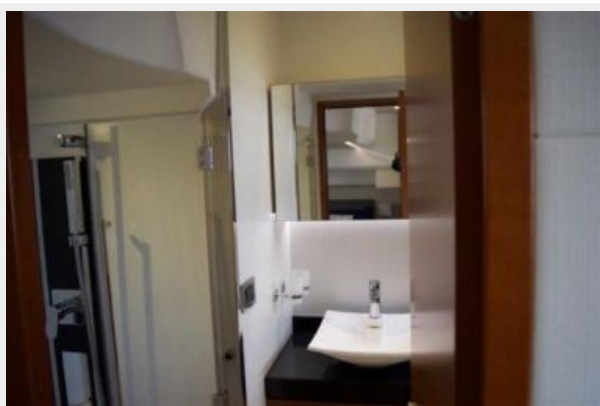
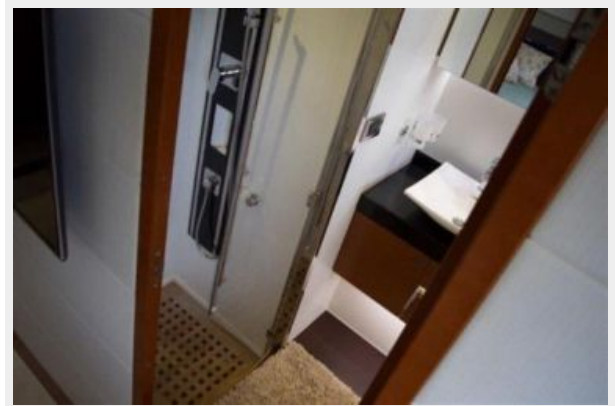
















CONTACTS

Andrey Shestakov, leading yacht broker of the sales department of Shestakov Yacht Sales Inc. Shestakov Yacht Sales Inc., the official representative of the Miami/Fort Lauderdale FL headquarters.

Contact details

Email: andrey@shestakovyachtsales.com

Web: shestakovyachtsales.com/en/

Telephones

USA: +1(954)274-4435

Office hours

Monday – Saturday: **9:00 - 21:00** EDT

Sunday: **closed**

Address



Harbour Towne Marina, 850 NE 3rd St,
STE 213, Dania, FL 33004