

SKY'S LIMIT — RIVA



Builder: [RIVA](#)

Year Built: 2005

Model: Motor Yacht

Price: PRICE ON APPLICATION

Location: France

LOA: 52' 11" (16.12m)

Beam: 15' 2" (4.60m)

Min Draft: 4' 8" (1.40m)

Cruise Speed: 28 Kts. (32 MPH)

Max Speed: 35 Kts. (40 MPH)

Our experienced yacht broker, Andrey Shestakov, will help you choose and buy a yacht that best suits your needs **Sky's Limit — RIVA** from our catalogue. Presently, at Shestakov Yacht Sales Inc., we have a wide variety of yachts available on our sale's list. We also work in close contact with all the big yacht manufacturers from all over the world.

If you would like to buy a yacht **Sky's Limit — RIVA** or would like help answering any questions concerning purchasing, selling or chartering a yacht, please call **+1(954)274-4435**

TABLE OF CONTENTS

| | |
|------------------------------|---|
| TABLE OF CONTENTS | 2 |
| SPECIFICATIONS | 3 |
| Overview | 3 |
| Basic Information | 3 |
| Dimensions | 3 |
| Speed, Capacities and Weight | 3 |
| Accommodations | 4 |
| Hull and Deck Information | 4 |
| Engine Information | 4 |
| PHOTOS | 5 |
| CONTACTS | 8 |
| Contact details | 8 |
| Telephones | 8 |
| Office hours | 8 |
| Address | 8 |

SPECIFICATIONS

Overview

Sky's Limit is a unique Riva Rivale 52 due to its refit in 2013. The tower for the satellite was taken away resulting in a bigger sunbed and sofa. The cockpit galley was also replaced by a sofa which makes the cockpit very social friendly with new dark grey sunbrella sun beds. The handrail was deleted as well, giving the boat a very sporty and fluid line. Sky's limit is indeed characterized by a streamlined aggressive outer look which however refined cozy interiors that strike for their fine woods, precious fabrics, a design that harmoniously blends together elegance and sobriety and literally genial layout solutions that optimize the space available. The protection covers are also from 2013 in dark grey.

Basic Information

Category: Motor Yacht

Sub Category: Open Yacht

Model Year: 2005

Year Built: 2005

Refit Year: 2013

Country: France

Vessel Top: Bimini Top

Dimensions

LOA: 52' 11" (16.12m)

LWL: 44' 1" (13.42m)

Beam: 15' 2" (4.60m)

Min Draft: 4' 8" (1.40m)

Speed, Capacities and Weight

Cruise Speed: 28 Kts. (32 MPH)

Cruise Speed Range: 250

Max Speed: 35 Kts. (40 MPH)

Max Speed Range: 230 Kts.

Displacement: 46297.07502 Pounds

Water Capacity: 132.086026 Gallons

Fuel Capacity: 602.31227856 Gallons

Accommodations

Total Cabins: 3

Total Berths: 5

Sleeps: 6

Total Heads: 2

Hull and Deck Information

Hull Material: GRP

Hull Configuration: Deep Vee

Hull Color: Bronze

Engine Information

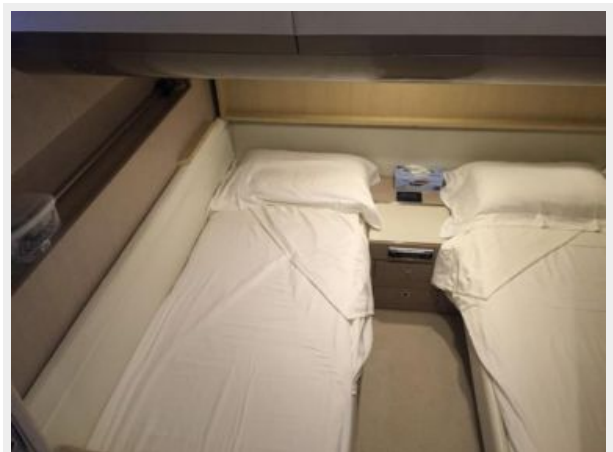
Engines: 2

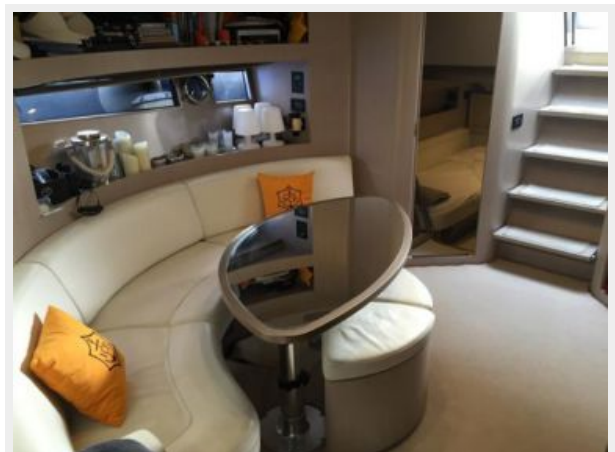
Manufacturer: Man Turbo Diesel

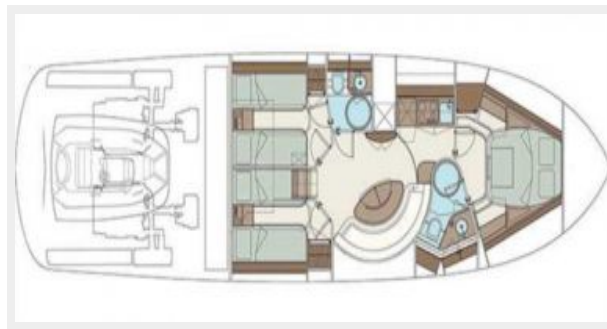
Engine Type: Inboard

Fuel Type: Diesel

PHOTOS







CONTACTS

Andrey Shestakov, leading yacht broker of the sales department of Shestakov Yacht Sales Inc. Shestakov Yacht Sales Inc., the official representative of the Miami/Fort Lauderdale FL headquarters.

Contact details

Email: andrey@shestakovyachtsales.com

Web: shestakovyachtsales.com/en/

Telephones

USA: +1(954)274-4435

Office hours

Monday – Saturday: **9:00 - 21:00** EDT

Sunday: **closed**

Address



Harbour Towne Marina, 850 NE 3rd St,
STE 213, Dania, FL 33004