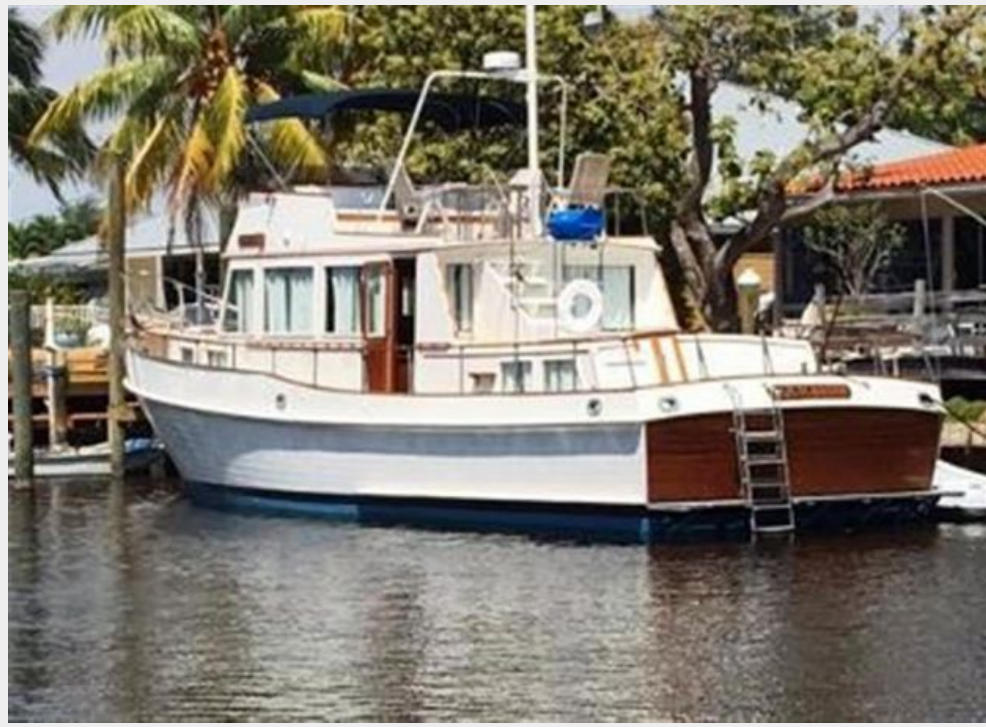


## QUICKSTEP — GRAND BANKS



**Builder:** GRAND BANKS

**Year Built:** 1980

**Model:** Trawler

**Price:** PRICE ON APPLICATION

**Location:** United States

**LOA:** 49' 0" (14.94m)

**Beam:** 15' 0" (4.57m)

**Min Draft:** 5' 0" (1.52m)

**Max Draft:** 5' 2" (1.57m)

**Cruise Speed:** 7 Kts. (8 MPH)

**Max Speed:** 9 Kts. (10 MPH)

Our experienced yacht broker, Andrey Shestakov, will help you choose and buy a yacht that best suits your needs **QUICKSTEP — GRAND BANKS** from our catalogue. Presently, at Shestakov Yacht Sales Inc., we have a wide variety of yachts available on our sale's list. We also work in close contact with all the big yacht manufacturers from all over the world.

If you would like to buy a yacht **QUICKSTEP — GRAND BANKS** or would like help answering any questions concerning purchasing, selling or chartering a yacht, please call **+1(954)274-4435**

---

# TABLE OF CONTENTS

---

TABLE OF CONTENTS	2
SPECIFICATIONS	3
Overview	3
Basic Information	3
Dimensions	3
Speed, Capacities and Weight	3
Accommodations	3
Hull and Deck Information	4
Engine Information	4
DETAILED INFORMATION	5
Overview	5
Accommodations	5
Galley	6
Engine Room	6
Electrical Equipment	7
Remarks	7
Exclusions	7
Disclaimer	7
PHOTOS	8
CONTACTS	18
Contact details	18
Telephones	18
Office hours	18
Address	18

---

# SPECIFICATIONS

---

## Overview

---

Long esteemed for her exceptional cruising comfort, few yachts in her class can compare with the timeless elegance of the Grand Banks 49 Classic. QUICKSTEP offers spacious accommodations with a 3 stateroom/2 head layout.

## Basic Information

---

**Category:** Trawler

**Model Year:** 1980

**Year Built:** 1980

**Country:** United States

**Vessel Top:** Bimini Top

**Fly Bridge:** Yes

## Dimensions

---

**LOA:** 49' 0" (14.94m)

**LWL:** 48' 9" (14.86m)

**LOD:** 48' 9" (14.86m)

**Beam:** 15' 0" (4.57m)

**Min Draft:** 5' 0" (1.52m)

**Max Draft:** 5' 2" (1.57m)

## Speed, Capacities and Weight

---

**Cruise Speed:** 7 Kts. (8 MPH)

**Max Speed:** 9 Kts. (10 MPH)

**Displacement:** 60000 Pounds

**Water Capacity:** 500 Gallons

**Holding Tank:** 70 Gallons

**Fuel Capacity:** 500 Gallons

## Accommodations

---

**Total Cabins:** 2

**Total Heads:** 2

---

## Hull and Deck Information

---

**Hull Material:** Fiberglass

**Deck Material:** Teak

**Hull Finish:** Aluminum

---

## Engine Information

---

**Engines:** 2

**Manufacturer:** Caterpillar

**Model:** 3208-TA

**Engine Type:** Inboard

**Fuel Type:** Diesel

---

# DETAILED INFORMATION

---

## Overview

---

Long esteemed for her exceptional cruising comfort, few yachts in her class can compare with the timeless elegance of the Grand Banks 49 Classic. With her 3/2 layout with galley up, she offers spacious accommodations for the cruising family or as many as three couples. The standard three-stateroom interior with galley up includes a spacious master stateroom aft with walkaround queen bed, and two guest staterooms forward with athwartships single berths in the starboard cabin and V-berths forward. (An alternate two-stateroom layout with the galley down has a booth dinette in place of the third stateroom.) The starboard lower helm has a deck access door, and 360-degree salon windows provide panoramic views of the water. The stand-up engine room of the 49 Classic (with space for a washer/dryer) is accessed via hinged companionway steps that lift and lock in position. Interior woodwork is satin-finished teak with hardwood parquet flooring throughout. Originally powered with twin 120 hp Lehman diesels, later models came with Cat diesels from 210hp (11–12 knots top) to 435hp (17–18 knots top). A popular—and expensive—yacht in her day, about 125 Grand Banks 49 Classics were built.

## Accommodations

---

Starting forward on board **QUICKSTEP**, one finds a VIP stateroom and twin guest stateroom that share a very comfortable head with separate shower stall located on the port side of the hallway. The VIP has an insert to create a rather large berth plus a hanging locker and lots of storage. A large deck hatch complete with screens plus opening port lights provide good ventilation., The guest cabin and the head also have opening port lights for ventilation.

Ascending 3 steps, one is in the pilothouse/galley area of **QUICKSTEP**. The galley is to port. The helm is starboard and features a truly traditional wooden steering wheel that will make you feel like you are on the adventure of a lifetime.

The entire main deck is finished in satin varnished matched teak wood. This combined with the highly varnished teak parquet flooring found throughout **QUICKSTEP** creates an elegant look. The true surprise on this lovely sea going home is the fireplace located to port just aft of the galley.

Dual side doors make **QUICKSTEP** very easy to access and helps out with short handed docking as well.

The salon has seating with storage and an hi-low table located to starboard.

Continuing aft, one descends to the master suite. A queen island berth with a dedicated exit aft to the deck, hide away stairs, large hanging lockers, built in dresser, and opening port lights make this a private owner's sanctuary. The en suite head has a bath tub/shower combo.

---

## Galley

---

As a broker, I hear quite often how our sea going chef's feel like mushrooms in the dark with a galley down. On board **QUICKSTEP**, one will not hear that from the chef as her galley is located forward on the port side. Tremendous views are available just to be savored like a fine wine. No one will hear about a lack of storage either. Originally, the GB49 was designed, with the idea of cruisers spending long periods of time on board therefore, an abundance of storage was built into her from the beginning plus ample counter space and everything within easy reach.

- 3 burner Galley Maid Empress stove with oven
- SS sink mounted port side out board.
- SS Grunert refrigerator and chest freezer.
- Panasonic Microwave
- Broan Trash Compactor.
- Black & Decker SS toaster oven
- Oster SS toaster

---

## Engine Room

---

The engine room on board **QUICKSTEP** is located beneath the main salon. There is an entrance from below the galley stairs to the lower deck as well as thru several deck hatches. No crouching tigers on this yacht, the engine room has full standing head room. This area is quite large housing not only the standard mechanical equipment one expects on a well founded yacht, but also a work sink and a Kariba washing machine.

- Twin Caterpillar 3208 TA's Port 3670hrs. New starboard engine has 1460 hrs.
- Morse controls which are mechanical lever/ cable type
- Adjustable engine mounts
- Jabsco 12v blowers are located in the aft engine room/ generator room.
- Fuel priming handles-located on the secondary fuel filter heads.
- Glendinning engine synchronizer
- 20 gal. hot water tank, engine heat exchange and 120v
- Fresh water Pump
- Air conditioning pump
- Grunert refrigeration
- Bronze thru hulls
- Prop shafts are 2" Stainless Steel with hex nut packing glands
- 2 x Steel fuel tanks, located outboard (P & S) complete with sight gauges
- 2 x Racor 900's fuel filters in addition to the standard Cat fuel filters.
- 500 Racor for genset.

---

## Electrical Equipment

---

- 12v DC, 110v AC service
- 50 amp shore power service
- 2 x 112v alternators which are engine mounted and belt driven.
- AC breakers located at the lower helm.
- Various 110v outlets are located in strategic places throughout **QUICKSTEPS**.
- Voltage, amp analog meters are in the main electrical panel for the AC systems.
- Analog DC voltage meter is also located on the main panel.
- 12v outlets are located at pilothouse and bridge helms, starboard forward in salon and port aft salon.
- Promariner, ProNautic 1250 12v/50 amp battery charger
- 16kW Northern Lights PX-316K1 - 1025 hrs.

---

## Remarks

---

**QUICKSTEP** is a beautiful example of one of the most successful models( 125 built) that Grand Banks, American Marine has built in their 60 years of building ship like trawlers. With her semi-displacement hull, stabilizers and shallow draft, she is a proven world class cruiser known for incredible sea keeping abilities even in really nasty weather. **QUICKSTEP'S** classic lines make her a true head turner in any port. She has a traditional 3 stateroom, galley up layout that is so conducive to 2 couples cruising or the family with kids. She has benefited from knowledgeable owners who have maintained her well. A life style change in her owner's plans means that someone will become the next owner of this iconic trawler.

---

## Exclusions

---

Owner's personal belongings.

---

## Disclaimer

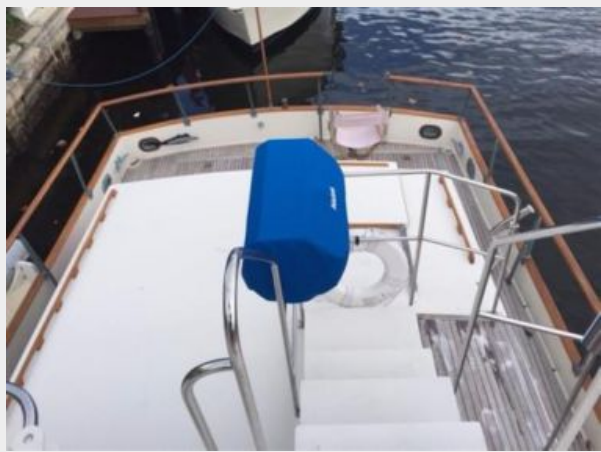
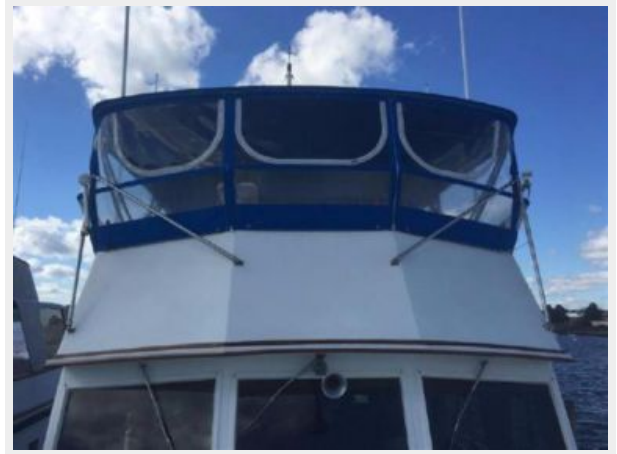
---

The Company offers the details of this vessel or yacht in good faith but cannot guarantee or warrant the accuracy of this information nor warrant the condition of the vessel. A buyer should instruct his representatives, agents, or his surveyors, to investigate such details as the buyer desires validated. This vessel or yacht is offered subject to prior sale, price change, or withdrawal without notice.

# PHOTOS





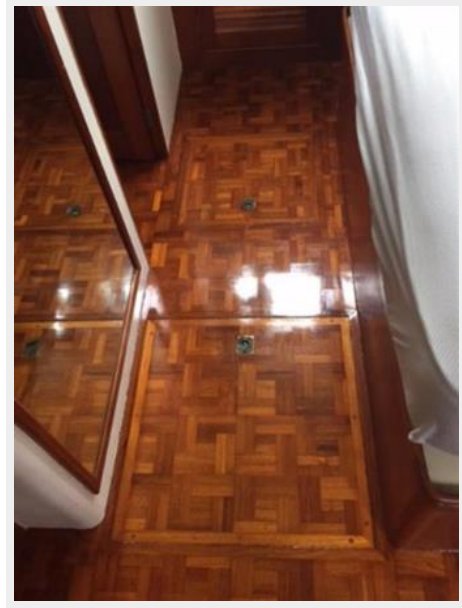


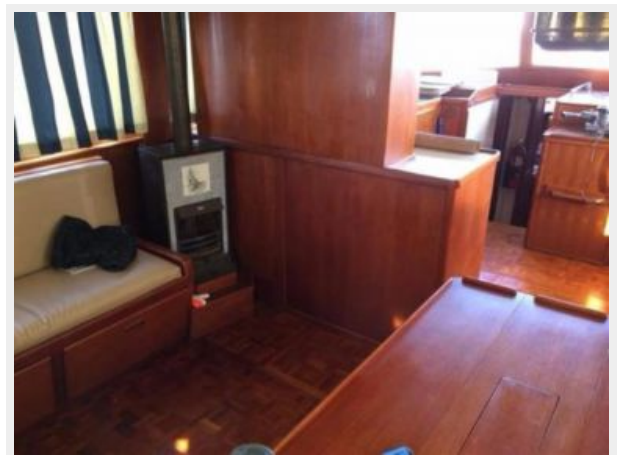






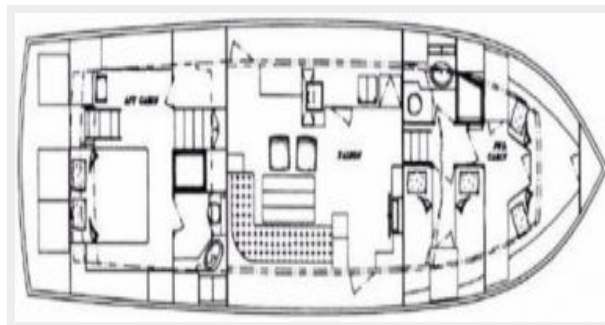












# CONTACTS

---

Andrey Shestakov, leading yacht broker of the sales department of Shestakov Yacht Sales Inc. Shestakov Yacht Sales Inc., the official representative of the Miami/Fort Lauderdale FL headquarters.

## Contact details

---

Email: [andrey@shestakovyachtsales.com](mailto:andrey@shestakovyachtsales.com)

Web: [shestakovyachtsales.com/en/](http://shestakovyachtsales.com/en/)

## Telephones

---

USA: +1(954)274-4435

## Office hours

---

Monday – Saturday: **9:00 - 21:00** EDT

Sunday: **closed**

## Address

---



Harbour Towne Marina, 850 NE 3rd St,  
STE 213, Dania, FL 33004