

## KOTIJ — ALBIN



**Судостроитель:** [ALBIN](#)

**Год постройки:** 2006

**Модель:** Моторная яхта

**Цена:** **ЦЕНА ЯХТЫ ПО ЗАПРОСУ**

**Местонахождение:** United States

**Длина общая:** 40' 0" (12.19m)

**Ширина:** 12' 11" (3.94m)

**Мин. осадка:** 3' 10" (1.17m)

**Крейс. скорость:** 15 Kts. (17 MPH)

**Макс. скорость:** 22 Kts. (25 MPH)

Купить **Kotij — ALBIN** а также выбрать подходящую вам яхту из нашего каталога яхт вам поможет опытный яхтенный брокер Андрей Шестаков. На сегодняшний день компания **Shestakov Yacht Sales Inc.** имеет большое количество яхт в собственном списке продаж, а также тесно сотрудничает со всеми крупными яхтенными производителями по всему миру.

Для того чтобы купить яхту **Kotij — ALBIN** а также проконсультироваться по любому вопросу связанному с покупкой, продажей, чартером яхт позвоните по телефону **+7(918)465-66-44**.

# ОГЛАВЛЕНИЕ

---

ОГЛАВЛЕНИЕ	2
ХАРАКТЕРИСТИКИ	6
Обзор	6
Основная информация	6
Размеры	6
Скорость, вместимость и масса	6
Размещение	7
Корпус и палуба	7
Информация о двигателе	7
ПОДРОБНОЕ ОПИСАНИЕ	8
40' Albin Vessel Walkthrough	8
40' Albin Accommodations	8
40' Albin Salon	8
40' Albin Galley	8
40' Albin Dining	9
40' Albin Master Stateroom	9
40' Albin Guest Stateroom	9
40' Albin Lower Helm	9
40' Albin Flybridge	9
40' Albin Trunk Cabin	9
40' Albin Aftdeck	9
40' Albin Audio/Visual Equipment	10
40' Albin Electronics	10
40' Albin Electrical System	10
40' Albin Engine/Mechanical Equipment	11
40' Albin Deck Hardware	11
40' Abin Safety and Fire Protection	12
40' Albin Exclusions	12

40' Albin Disclaimer	12
Исключения	12
Отказ от ответственности	13
<b>ФОТОГРАФИИ</b>	<b>14</b>
40' Albin starboard forward profile photo1	14
40' Albin starboard forward profile photo2	14
40' Albin starboard aft profile photo1	14
40' Albin starboard aft profile photo2	14
40' Albin port forward profile	14
40' Albin port profile	14
40' Albin anchor windlass	15
40' Albin port aft profile	15
40' Albin foredeck aft	15
40' Albin foredeck	15
40' Albin port side deck photo1	16
40' Albin port side deck photo2	16
40' Albin starboard side deck photo1	16
40' Albin starboard side deck photo2	16
40' Albin flybridge forward	17
40' Albin flybridge aft	17
40' Albin flybridge port	17
40' Albin flybridge starboard	17
40' Albin flybridge helm	17
40' Albin flybridge helmseats	17
40' Albin flybridge port aft seating	18
40' Albin trunk cabin forward	18
40' Albin trunk cabin aft	18
40' Albin mast hinge	18
40' Albin aftdeck	18

---

40' Albin aftdeck port	18
40' Albin aftdeck starboard	19
40' Albin aftdeck forward	19
40' Albin lazarette access	19
40' Albin transom	19
40' Albin swimplatform	19
40' Albin salon forward	19
40' Albin salon aft	20
40' Albin salon starboard	20
40' Albin salon port seating photo1	20
40' Albin salon port seating photo2	20
40' Albin galley photo1	20
40' Albin galley photo2	20
40' Albin lower helm photo1	21
40' Albin lower helm photo2	21
40' Albin lower helm photo3	21
40' Albin master stateroom	21
40' Albin master stateroom port	21
40' Albin master stateroom starboard	21
40' Albin master stateroom head	22
40' Albin master stateroom tub-shower	22
40' Albin guest stateroom	22
40' Albin guest stateroom port	22
40' Albin guest stateroom starboard	22
40' Albin guest stateroom forward	22
40' Albin guest stateroom settee photo1	23
40' Albin guest stateroom settee photo2	23
40' Albin guest stateroom head	23
40' Albin guest stateroom convertible berth	23

---

---

40' Albin engine room access	23
40' Albin engine room forward	23
40' Albin engine room aft	24
40' Albin port main engine	24
40' Albin starboard main engine	24
40' Albin Racor fuel filters	24
40' Albin electrical panel	24
40' Albin water heater	24
40' Albin generator soundbox	25
40' Albin generator	25
40' Albin battery charger	25
40' Albin port running gear	25
40' Albin starboard running gear	25
40' Albin layout	25
<b>КОНТАКТЫ</b>	<b>26</b>
Контактная информация	26
Телефоны	26
Время работы	26
Адрес	26

# ХАРАКТЕРИСТИКИ

## Обзор

Kotij is a well-maintained C. Raymond Hunt designed 2006 40' Albin North Sea Cutter, hull #6, purchased by her owners three years ago. She offers low-hour twin Yanmar main engines, low-hour Onan 8 kW generator, bowthruster, beautiful interior fit & finish and a large, enclosed flybridge with hardtop. Her 17' 5" height and 4' draft make her a Great Loop capable cruiser. Her sellers have wrapped up their cruising plans, so Kotij is now seriously for sale.

## Основная информация

**Тип судна:** Моторная яхта

**Подкатегория:** Aft Cabin

**Модельный год:** 2006

**Год постройки:** 2006

**Страна:** United States

**Верх:** Bimini Top

**Открытая палуба мостика:** Да

## Размеры

**Длина общая:** 40' 0" (12.19m)

**Ширина:** 12' 11" (3.94m)

**Мин. осадка:** 3' 10" (1.17m)

**Трапы:** 14' 8" (4.47m)

## Скорость, вместимость и масса

**Крейс. скорость:** 15 Kts. (17 MPH)

**Макс. скорость:** 22 Kts. (25 MPH)

**Водоизмещение:** 25000 Pounds

**Вместимость воды:** 200 Gallons

**Вместимость сточного бака:** 15 Gallons

**Объем топливного бака:** 400 Gallons

## Размещение

---

Всего кают: 2

Всего коек: 3

Спальные места: 6

Всего ком. состава: 2

## Корпус и палуба

---

Материал корпуса: Fiberglass

Материал палубы: Composite Fiberglass

Комплектация корпуса: Modified V-Hull

Отделка корпуса: Stainless Steel

## Информация о двигателе

---

Двигатели: 2

Производитель: Yanmar

Модель: 6LYA-STP

Тип двигателя: Inboard

Тип топлива: Diesel

---

# ПОДРОБНОЕ ОПИСАНИЕ

---

## 40' Albin Vessel Walkthrough

---

From the swimplatform, you walk through a transom gate onto the aftdeck. From there, you can walk forward on either side deck. You can step up to the trunk cabin and flybridge from the starboard side deck or walk forward on either side deck to the foredeck or salon side deck access doors. Once inside the salon, you will find the lower helm starboard forward, master stateroom entrance forward, side deck access door port forward, settee and hi/lo folding teak table port aft, guest stateroom entrance aft and galley to starboard. Engine room access is via salon sole hatches.

Interior upholstery and window shades are new. All portlights have been re-bedded.

## 40' Albin Accommodations

---

Kotij offers a master stateroom forward with an island queen size berth and separate ensuite head and tub/shower and a guest stateroom aft with a wrap-around settee that converts to a double size berth and an ensuite head. The salon settee also converts to a double size berth.

## 40' Albin Salon

---

The salon offers a wrap-around settee and hi/lo, folding teak table with storage underneath that converts to a double size berth port aft, side deck access doors on each side, teak & holly sole, storage cabinetry port forward, opening side and aft windows with screens and shades and an opening center windshield.

## 40' Albin Galley

---

The galley is located to starboard in the salon.

- Princess 3-burner electric cooktop and oven
- Tundra 12/24 vdc refrigerator/freezer
- GE microwave oven
- Stainless steel sink
- Storage cabinets and drawers
- Dry storage



---

## 40' Albin Dining

---

Dining space is available at the salon settee.

---

## 40' Albin Master Stateroom

---

The master stateroom is forward and offers an island queen size berth, overhead hatch, 2 portlights, reading lights, nightstands, shelves, storage cabinets and drawers, hanging locker and an ensuite head and separate tub/shower.

---

## 40' Albin Guest Stateroom

---

The guest stateroom is aft and offers a wrap-around settee and hi/lo folding teak table that converts into a double size berth with storage underneath, desk, 4 portlights, aft hatch to the aftdeck, window aft with a screen, storage drawers and cabinets, hanging locker, shelf, teak & holly sole and ensuite head.

---

## 40' Albin Lower Helm

---

The lower helm is located starboard forward in the salon and offers a full helm, starboard side deck access door and a fold-up benchseat

---

## 40' Albin Flybridge

---

The flybridge offers a hardtop, full Stratoglass style enclosure (2013), non-skid deck, console forward with storage underneath, L-shaped seating with storage underneath port aft and 2 X Arrigoni helmseats.

---

## 40' Albin Trunk Cabin

---

The trunk cabin offers a non-skid deck, stainless steel rails, hinged stainless steel mast, spreader lights and stainless steel steps to the flybridge.

---

## 40' Albin Aftdeck

---

The aftdeck offers a non-skid deck, transom gate to the fiberglass swimplatform, hot/cold fresh water shower, stainless steel rails on teak toe rails, 2 rod holders, deck storage box, lazarette access, molded-in steps to each side deck, teak step to the trunk cabin and a hatch to the guest stateroom.

---

## 40' Albin Audio/Visual Equipment

---

- Pioneer DEH-P490918 stereo in the salon
- Polaroid flat screen TV in the guest stateroom

---

## 40' Albin Electronics

---

- Raymarine Radar
- Raymarine E120 multi-function display on the flybridge
- Raymarine E80 multi-function display at the lower helm
- Raymarine Ray215 VHF on the flybridge
- Raymarine ST70 autopilot at the lower helm and on the flybridge
- Standard Horizon Eclipse + VHF at the lower helm
- Standard Horizon VLH-3000 loudhailer on the flybridge
- Danforth magnetic compass on the flybridge
- VDO rudder angle indicator gauge at each helm
- Weems & Plath clock and barometer in the salon

---

## 40' Albin Electrical System

---

- Onan MDKAV-5668618 9 kW generator
- ProMariner ProNautic 1260 C3 battery charger
- Perko battery switch
- 6 X 8D AGM batteries (March 2015)
- 2 X Hitachi 12vdc 80 amp alternators
- 50 amp shore cord
- 12vdc outlets in the salon and on the flybridge

---

## 40' Albin Engine/Mechanical Equipment

---

- Twin Yanmar 6LYA-STP 370 hp main engines with approximately 443 hours on port and 422 hours on starboard
- ZF 220-A gearboxes
- Morse engine controls
- Groco sea strainers
- Racor 900 FH fuel filter for each main engine
- Racor 500MA fuel filter on the generator
- Algae-X magnetic fuel conditioner system
- Capilano hydraulic steering system
- Sidepower bowthruster with wireless remote
- Bennett trim tabs
- Cruisair reverse cycle air conditioning/heating system (3 zones)
- Raritan 12 gallon water heater
- Electric heads
- Wema tank gauges
- 2 X Tankwatch 4 holding tank monitor systems
- 25 gallon gray water tank

---

## 40' Albin Deck Hardware

---

- Muir anchor windlass with foot controls and a remote control on the flybridge
- Delta Fastset anchor
- Pulpit
- Stainless steel anchor roller
- Washdown
- Non-skid deck

- Stainless steel rails on a teak toe rail
- Stainless steel deck hardware
- Boarding gate each side
- Fiberglass swimplatform
- Stainless steel swim ladder
- Outboard bracket
- Spreader lights
- Awlgrip Flag Blue hull

---

## **40' Abin Safety and Fire Protection**

---

- Rule bilge pumps
- Fire extinguishers
- Jabsco searchlight
- Security camera on the aftdeck
- Lifesling2 Overboard Rescue System

---

## **40' Albin Exclusions**

---

- Sellers' personal belongings

---

## **40' Albin Disclaimer**

---

The Company offers the details of this vessel in good faith but cannot guarantee or warrant the accuracy of this information nor warrant the condition of the vessel. A buyer should instruct his agents, or his surveyors, to investigate such details as the buyer desires validated. This vessel is offered subject to prior sale, price change, or withdrawal without notice.

---

## **Исключения**

---

При продаже яхты исключаются личные вещи владельца.

---

## Отказ от ответственности

---

Компания предоставляет описание судна или яхты добросовестно, но не может гарантировать точность этой информации, а также не ручается за техническое состояние. Покупатель должен проинструктировать своих агентов или оценщиков исследовать представленную информацию более подробно, по собственному желанию. Продажа судна или яхты, изменение цены или снятие с продажи будет происходить без предварительного уведомления.

# ФОТОГРАФИИ

40' Albin starboard forward profile photo1



40' Albin starboard forward profile photo2



40' Albin starboard aft profile photo1



40' Albin starboard aft profile photo2



40' Albin port forward profile



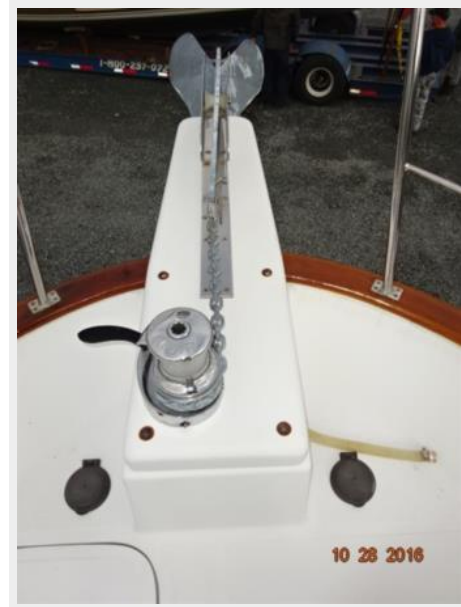
40' Albin port profile



40' Albin port aft profile



40' Albin anchor windlass



40' Albin foredeck



40' Albin foredeck aft



40' Albin port side deck photo1



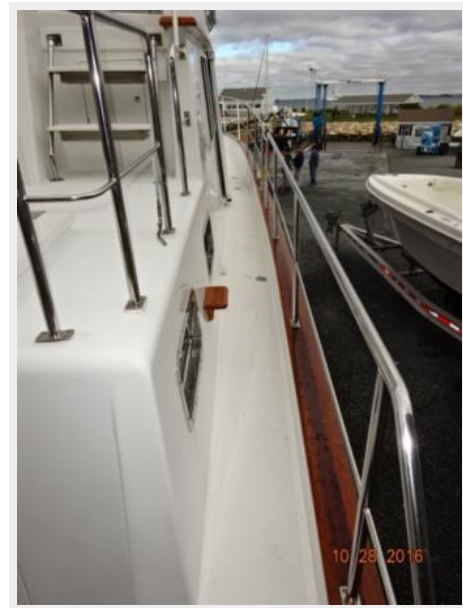
40' Albin port side deck photo2



40' Albin starboard side deck photo1



40' Albin starboard side deck photo2





**40' Albin flybridge forward**



**40' Albin flybridge aft**



**40' Albin flybridge port**



**40' Albin flybridge starboard**



**40' Albin flybridge helm**



**40' Albin flybridge helmseats**



**40' Albin flybridge port aft seating**



**40' Albin trunk cabin forward**



**40' Albin trunk cabin aft**



**40' Albin mast hinge**



**40' Albin aftdeck**



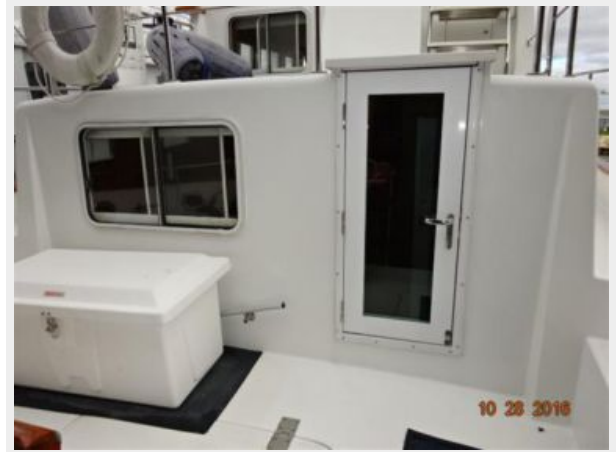
**40' Albin aftdeck port**



40' Albin aftdeck starboard



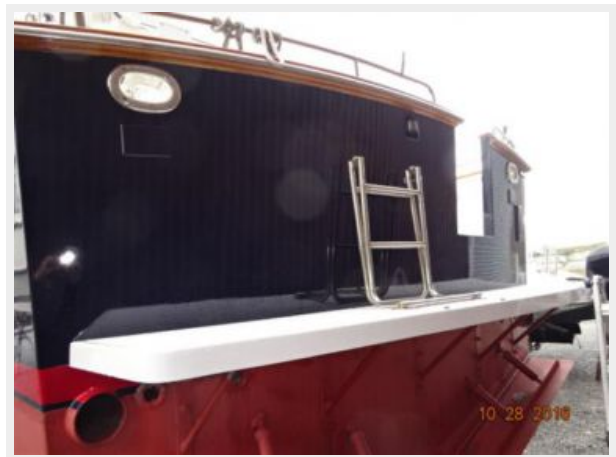
40' Albin aftdeck forward



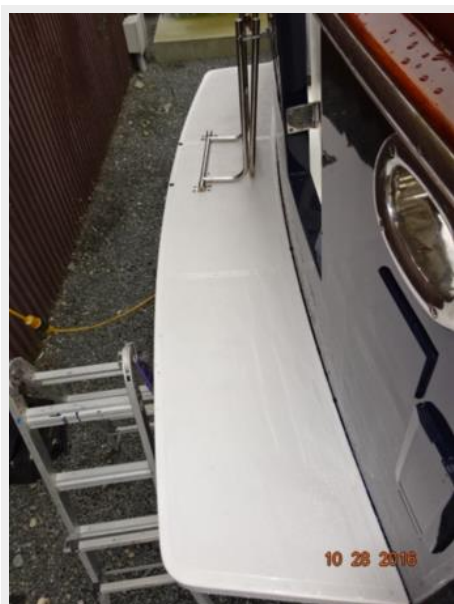
40' Albin lazarette access



40' Albin transom



40' Albin swimplatform



40' Albin salon forward



**40' Albin salon aft**



**40' Albin salon starboard**



**40' Albin salon port seating photo1**



**40' Albin salon port seating photo2**



**40' Albin galley photo1**



**40' Albin galley photo2**



40' Albin lower helm photo1



40' Albin lower helm photo2



40' Albin lower helm photo3



40' Albin master stateroom



40' Albin master stateroom port



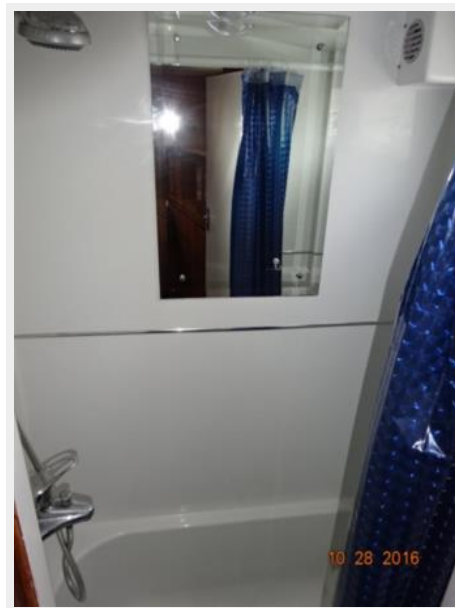
40' Albin master stateroom starboard



40' Albin master stateroom head



40' Albin master stateroom tub-shower



40' Albin guest stateroom



40' Albin guest stateroom port



40' Albin guest stateroom starboard



40' Albin guest stateroom forward



40' Albin guest stateroom settee photo1



40' Albin guest stateroom settee photo2



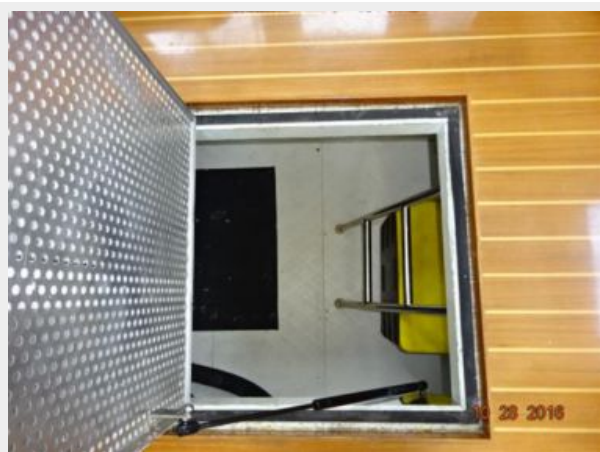
40' Albin guest stateroom convertible berth



40' Albin guest stateroom head



40' Albin engine room access



40' Albin engine room forward



40' Albin engine room aft



40' Albin port main engine



40' Albin starboard main engine



40' Albin Racor fuel filters



40' Albin electrical panel



40' Albin water heater





40' Albin generator soundbox



40' Albin generator



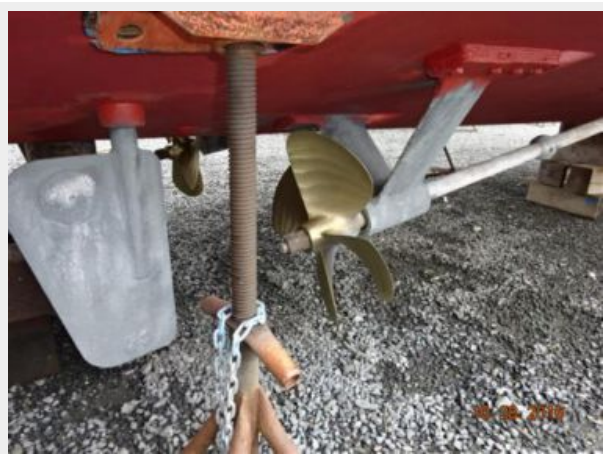
40' Albin battery charger



40' Albin port running gear



40' Albin starboard running gear



40' Albin layout



# КОНТАКТЫ

---

Андрей Шестаков (Andrey Shestakov) – ведущий яхтенный брокер отдела продаж яхт и судов компании Shestakov Yacht Sales Inc. Официальный представитель Shestakov Yacht Sales Inc. для русскоговорящих клиентов в центральном офисе компании в Майами/Форт Лодердейл/Флорида/США.

## Контактная информация

---

Email: [andrey@shestakovyachtsales.com](mailto:andrey@shestakovyachtsales.com)

Web: [shestakovyachtsales.com](http://shestakovyachtsales.com)

## Телефоны

---

Краснодарский край: **+7(918)465-66-44**

США, Майами, Флорида: **+1(954)274-4435**

## Время работы

---

Понедельник – Суббота: **9:00 - 21:00**  
EDT

Воскресенье: **Закрито**

## Адрес

---



Harbour Towne Marina, 850 NE 3rd St,  
STE 213, Dania, FL 33004