

2018 66 AZIMUT — AZIMUT



Builder: [AZIMUT](#)

Year Built: 2018

Model: Tender

Price: PRICE ON APPLICATION

Location: United States

LOA: 66' 0" (20.12m)

Beam: 17' 0" (5.18m)

Max Draft: 5' 3" (1.60m)

Our experienced yacht broker, Andrey Shestakov, will help you choose and buy a yacht that best suits your needs 2018 66 Azimut — AZIMUT from our catalogue. Presently, at Shestakov Yacht Sales Inc., we have a wide variety of yachts available on our sale's list. We also work in close contact with all the big yacht manufacturers from all over the world.

If you would like to buy a yacht 2018 66 Azimut — AZIMUT or would like help answering any questions concerning purchasing, selling or chartering a yacht, please call +1(954)274-4435

TABLE OF CONTENTS

TABLE OF CONTENTS	2
SPECIFICATIONS	8
Overview	8
Basic Information	8
Dimensions	8
Speed, Capacities and Weight	8
Hull and Deck Information	8
Engine Information	9
DETAILED INFORMATION	10
Boat Highlights	10
Exclusions	11
Disclaimer	12
PHOTOS	13
1	13
2	13
3	13
4	13
6	14
5	14
8	14
7	14
99	15
9	15
999	15
9999	15
large	15
99999	15
IMG_4703	16

IMG_4704	16
IMG_4706	16
IMG_4708	16
IMG_4709	16
IMG_4710	16
IMG_4711	17
IMG_4712	17
IMG_4714	17
IMG_4713	17
IMG_4715	17
IMG_4716	17
IMG_4717	18
IMG_4718	18
IMG_4719	18
IMG_4703	18
IMG_4704	18
IMG_4706	18
IMG_4709	19
IMG_4708	19
IMG_4710	19
IMG_4711	19
IMG_4712	20
IMG_4713	20
IMG_4714	20
IMG_4715	20
IMG_4716	20
IMG_4717	20
IMG_4703	21
IMG_4704	21

IMG_4706	21
IMG_4708	21
IMG_4709	21
IMG_4710	21
IMG_4711	22
IMG_4703	22
IMG_4704	22
IMG_4706	22
IMG_4709	22
IMG_4708	22
IMG_4710	23
IMG_4711	23
IMG_4712	23
IMG_4713	23
IMG_4714	24
IMG_4715	24
IMG_4716	24
IMG_4717	24
IMG_4718	24
IMG_4719	24
IMG_4720	25
IMG_4721	25
IMG_4723	25
IMG_4722	25
IMG_4724	26
IMG_4725	26
IMG_4726	26
IMG_4727	26
IMG_4730	27

IMG_4728	27
IMG_4731	27
IMG_4732	27
IMG_4734	28
IMG_4733	28
IMG_4735	28
IMG_4737	28
IMG_4740	29
IMG_4741	29
IMG_4742	29
IMG_4743	29
IMG_4745	30
IMG_4746	30
IMG_4747	30
IMG_4748	30
IMG_4749	31
IMG_4750	31
IMG_4752	31
IMG_4751	31
IMG_4753	32
IMG_4754	32
IMG_4755	32
IMG_4756	32
IMG_4757	33
IMG_4758	33
IMG_4759	33
IMG_4760	33
IMG_4761	34
IMG_4762	34

IMG_4763	34
IMG_4764	34
IMG_4765	35
IMG_4766	35
IMG_4768	35
IMG_4767	35
IMG_4769	35
IMG_4770	35
IMG_4771	36
IMG_4772	36
IMG_4773	36
IMG_4774	36
IMG_4775	36
IMG_4776	36
IMG_4778	37
IMG_4777	37
IMG_4779	37
IMG_4780	37
IMG_4781	38
IMG_4782	38
IMG_4783	38
IMG_4784	38
IMG_4785	38
IMG_4786	38
IMG_4787	39
IMG_4788	39
IMG_4789	39
IMG_4790	39
IMG_4791	40

IMG_4792	40
IMG_4794	40
IMG_4793	40
IMG_4795	41
IMG_4796	41
IMG_4797	41
CONTACTS	42
Contact details	42
Telephones	42
Office hours	42
Address	42

SPECIFICATIONS

Overview

All reasonable offers will be presented, please don't hesitate to ask if you have a client that may be interested. Viewings can be arranged for qualified clients by calling the following numbers:
Contact: Eric Castillo: 954-274-5575 or Drew Baldwin: 954-263-4242

Basic Information

Category: Tender

Model Year: 2018

Year Built: 2018

Country: United States

Vessel Top: Bimini Top

Dimensions

LOA: 66' 0" (20.12m)

Beam: 17' 0" (5.18m)

Max Draft: 5' 3" (1.60m)

Speed, Capacities and Weight

Displacement: 91712 Pounds

Water Capacity: 240 Gallons

Fuel Capacity: 1030 Gallons

Hull and Deck Information

Hull Material: Fiberglass

Engine Information

Engines: 2

Manufacturer: Caterpillar

Model: C18 Acert

Engine Type: Inboard

Fuel Type: Diesel

DETAILED INFORMATION

Boat Highlights

Complete Factory Equipment and added Options include the Following:

Caterpillar C18 1150's

Onan Generator 300 hrs

Hard Top

Seakeeper Stabilizer

Additional Seakeeper control station on fly

Maneuvering Joystick

Raymarine AIS 650

Raymarine Platinum Package

Raymarine CAM200IP video camera

Glendenning cable master

Additional Glendenning cable master

Audio/Video Package

Central vacuum system

Icemaker on Fly

Luxury lighting Package

Stern thruster

American bar on portside dinette (incl 2 ss swiveling custom stools)

Cockpit chair (each) mod. Oskar

Cockpit furniture w/refrigerator

Coffee table on aft flybridge

Coffee table in salon

Co-pilot seat on fly

Co-pilot seat in main helm

Electrical bimini top on bow

Fabric curtains w/ black out system

Flagpole

Manual hi-lo table on port bow fly bridge

Mosquito nets for portholes

Refrigerator/Freezer upgrade in SS in galley

Safe in master cabin

Teak on Flybridge Deck

Teak on side decks

Telescopic Gangway

Floodlights on aft flybridge

Upgrade std external cushions

Washer & Dryer separate units

Winecooler in salon

Wooden floor in salon & dinette

Add'l control searchlight at lower helm

Chaincounter control at main helm

Cockpit table (hi-gloss version)

Dual Racor Fuel Filters for main engines

Electric Mooring winches in cockpit

Miele appliances (microwave combo and cooktop)

Exclusions

Owner's personal belongings.

Disclaimer

The Company offers the details of this vessel or yacht in good faith but cannot guarantee or warrant the accuracy of this information nor warrant the condition of the vessel. A buyer should instruct his representatives, agents, or his surveyors, to investigate such details as the buyer desires validated. This vessel or yacht is offered subject to prior sale, price change, or withdrawal without notice.

PHOTOS

1



2



3



4



5



6



7



8



9



99



999



9999



large

99999



IMG_4703



IMG_4704



IMG_4706



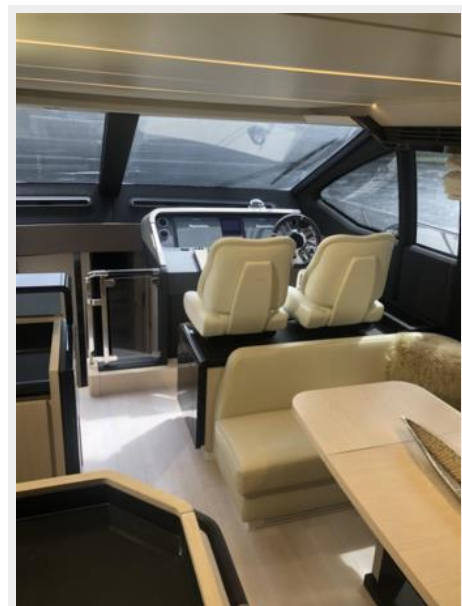
IMG_4708



IMG_4709



IMG_4710



IMG_4711



IMG_4712



IMG_4714



IMG_4713



IMG_4715



IMG_4716



IMG_4717



IMG_4718



IMG_4719



IMG_4703



IMG_4704



IMG_4706



IMG_4708



IMG_4709



IMG_4710



IMG_4711



IMG_4712



IMG_4713



IMG_4714



IMG_4715



IMG_4716



IMG_4717



IMG_4703



IMG_4704



IMG_4706



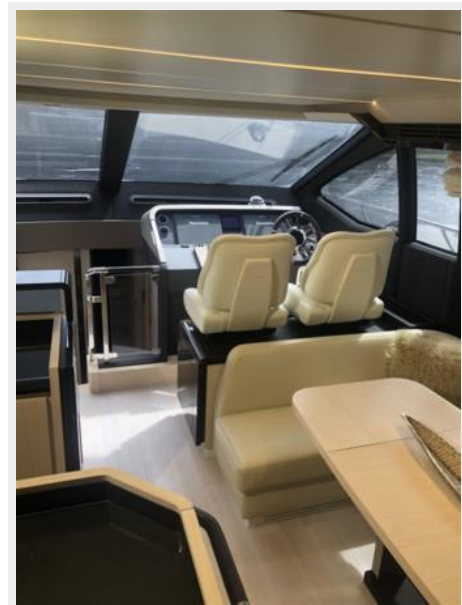
IMG_4708



IMG_4709



IMG_4710



IMG_4711



IMG_4703



IMG_4704



IMG_4706



IMG_4709



IMG_4708



IMG_4710



IMG_4711



IMG_4712



IMG_4713



IMG_4714



IMG_4715



IMG_4716



IMG_4717



IMG_4718



IMG_4719



IMG_4720



IMG_4721



IMG_4723



IMG_4722



IMG_4724



IMG_4725



IMG_4726



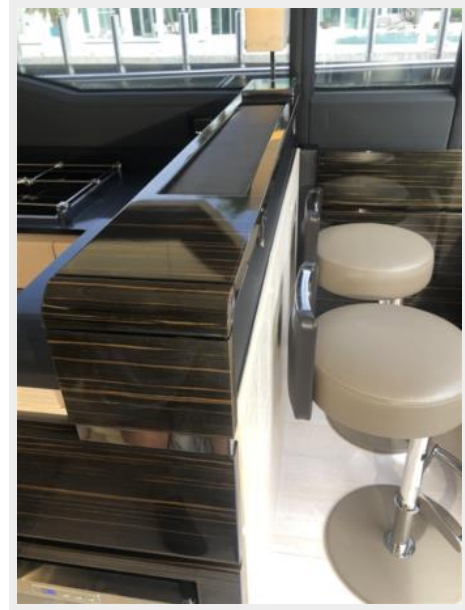
IMG_4727



IMG_4728



IMG_4730



IMG_4731



IMG_4732



IMG_4733



IMG_4734



IMG_4735



IMG_4737



IMG_4740



IMG_4741



IMG_4742



IMG_4743



IMG_4745



IMG_4746



IMG_4747



IMG_4748



IMG_4749



IMG_4750



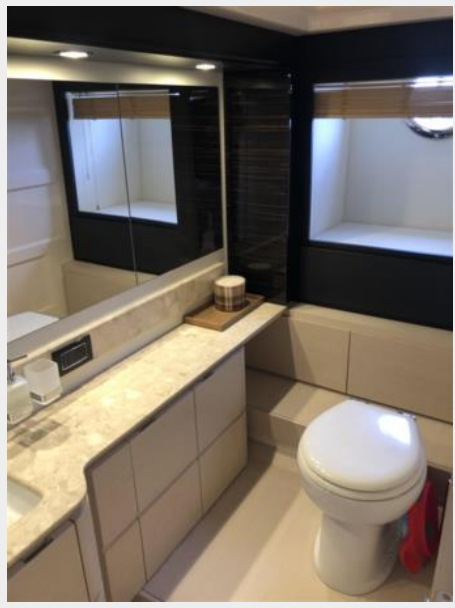
IMG_4752



IMG_4751



IMG_4753



IMG_4754



IMG_4755



IMG_4756



IMG_4757



IMG_4758



IMG_4759



IMG_4760



IMG_4761



IMG_4762



IMG_4763



IMG_4764



IMG_4765



IMG_4766



IMG_4768



IMG_4767



IMG_4769



IMG_4770



IMG_4771



IMG_4772



IMG_4773



IMG_4774



IMG_4775



IMG_4776



IMG_4777



IMG_4778



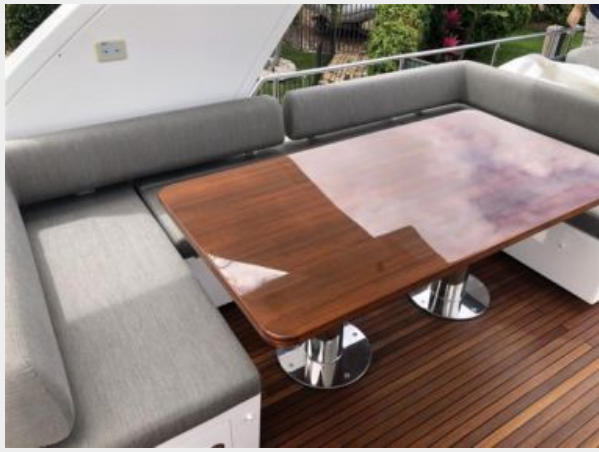
IMG_4779



IMG_4780



IMG_4781



IMG_4782



IMG_4783



IMG_4784



IMG_4785



IMG_4786



IMG_4787



IMG_4788



IMG_4789



IMG_4790



IMG_4791



IMG_4792



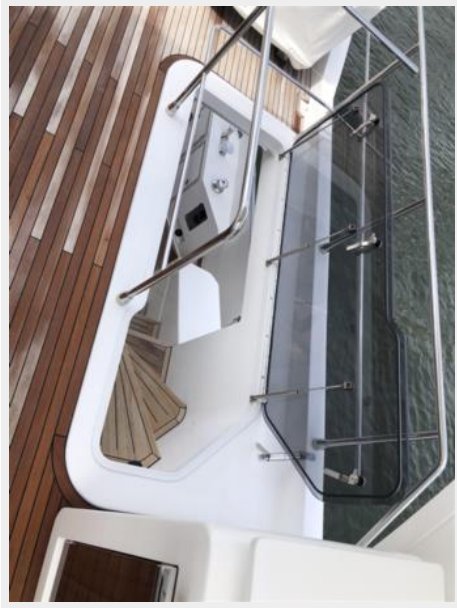
IMG_4794



IMG_4793



IMG_4795



IMG_4796



IMG_4797



CONTACTS

Andrey Shestakov, leading yacht broker of the sales department of Shestakov Yacht Sales Inc. Shestakov Yacht Sales Inc., the official representative of the Miami/Fort Lauderdale FL headquarters.

Contact details

Email: andrey@shestakovyachtsales.com

Web: shestakovyachtsales.com/en/

Telephones

USA: +1(954)274-4435

Office hours

Monday – Saturday: **9:00 - 21:00** EDT

Sunday: **closed**

Address



Harbour Towne Marina, 850 NE 3rd St,
STE 213, Dania, FL 33004