

# 35FT 2016 FORMULA 350 CROSSOVER BOV — FORMULA



**Builder:** FORMULA

**Year Built:** 2016

**Model:** Runabout

**Price:** PRICE ON APPLICATION

**Location:** United States

**LOA:** 35' 0" (10.67m)

**Beam:** 10' 9" (3.28m)

**Max Draft:** 3' 3" (0.99m)

Our experienced yacht broker, Andrey Shestakov, will help you choose and buy a yacht that best suits your needs 35ft 2016 Formula 350 Crossover Bowrider — FORMULA from our catalogue. Presently, at Shestakov Yacht Sales Inc., we have a wide variety of yachts available on our sale's list. We also work in close contact with all the big yacht manufacturers from all over the world.

If you would like to buy a yacht 35ft 2016 Formula 350 Crossover Bowrider — FORMULA or would like help answering any questions concerning purchasing, selling or chartering a yacht, please call +1(954)274-4435

---

# TABLE OF CONTENTS

---

TABLE OF CONTENTS	2
SPECIFICATIONS	3
Overview	3
Basic Information	3
Dimensions	3
Speed, Capacities and Weight	3
Accommodations	3
Hull and Deck Information	4
Engine Information	4
DETAILED INFORMATION	5
Exterior	5
Cockpit	6
Cabin	7
Engine	8
Manufacturer Provided Description	9
Exclusions	9
Disclaimer	9
PHOTOS	10
CONTACTS	18
Contact details	18
Telephones	18
Office hours	18
Address	18

---

# SPECIFICATIONS

---

## Overview

---

Loaded 2016 Formula 350 CBR ready to go!! Lowest priced 2016 350 CBR on the market!

- Only 83 hours on 8.2 MAG Engines
- Only 70 hours on the Kohler Generator
- Raymarine Hybrid Touchscreen Electronics
- Axis Joystick
- And much more

DYSID:3025500

## Basic Information

---

**Category:** Runabout

**Sub Category:** Bowrider

**Model Year:** 2016

**Year Built:** 2016

**Country:** United States

## Dimensions

---

**LOA:** 35' 0" (10.67m)

**Beam:** 10' 9" (3.28m)

**Max Draft:** 3' 3" (0.99m)

**Clearance:** 9' 5" (2.87m)

## Speed, Capacities and Weight

---

**Displacement:** 13470 Pounds

**Water Capacity:** 30 Gallons

**Holding Tank:** 37 Gallons

**Fuel Capacity:** 172 Gallons

## Accommodations

---

**Total Heads:** 1

---

## Hull and Deck Information

---

**Hull Material:** Fiberglass

**Hull Configuration:** Deep Vee

---

## Engine Information

---

**Engines:** 2

**Manufacturer:** Mercruiser

**Model:** 8.2 MAG ECT Bravo

**Engine Type:** I/O

**Fuel Type:** Gas/Petrol

---

# DETAILED INFORMATION

---

## Exterior

---

NMMA Yacht Certification

10-year Structural Warranty

Transferable 5-Year Formula Guard® Limited Protection Plan

Imron® graphic A, B or C w/cockpit accent striping

Pressure-treated Perma Panel™ structural hull matrix

Foam-filled hull cavities

Chemically bonded & thru-bolted deck-to-hull joint

Heavy-duty PVC gunwale w/stainless steel insert

Concealed fiberglass anchor locker

Offshore bow rail

Stainless steel hardware & 316L stainless steel welded rails

Ten custom Formula logo-cast cleats

Stainless steel fuel fill w/integral vent

Polished stainless steel vent trim

Two polished Bomar® cabin venting hatches w/screens

Four polished stainless steel portlights w/screens

Nonskid foredeck center walkway

Continuous tinted, tempered curved-glass windshield w/stainless steel top frame & center walk-thru

Windshield wiper

Air horn

Clarion® waterproof transom-mounted stereo remote control

Two transom-mounted 150W 6 1/2" marine-grade stereo speakers w/polished stainless steel grilles & separate tweeters

Starboard transom trunk storage & two fenders

Extended integrated swim platform w/concealed stainless steel swim ladder & pull-up cleats

Transom shower w/hot & cold controls

120V shorepower w/fail-safe galvanic isolator & two 30-amp cords

Polished stainless steel shorepower, cable TV & telephone hookups

Chromed city water inlet

## Cockpit

---

Continuous molded deck & cockpit liner

Molded in-dash deck access steps w/316L stainless steel handrail

Dash panels w/silver burl or wood finish & brushed metallic finish

Complete Livorsi® illuminated instrumentation, domed w/chrome bezels

Dash panel-mounted Ritchie® compass

Digital depth sounder

Garmin® GPS navigational system w/color chartplotter

Livorsi chromed shifters/throttles w/in-handle outdrive trim switch

Safety ignition stop switches w/tethers

Dino™ tilt steering wheel w/silver burl or wood & brushed metallic insets

Lockable under-dash storage compartment

Bennett® trim tab switches & indicators

Fingertip outdrive trim/trailer switches

Auxiliary 12V outlet

Illuminated waterproof accessory rocker switches w/E-T-A® circuit breakers

Clarion waterproof dash-mounted multi-feature stereo remote control

Four 150 W 6 1/2" marine-grade speakers w/600W amplification, polished stainless steel grilles & separate tweeters

iPod™/MP3 port

Fifteen polished stainless steel drink holders

Cockpit/swim platform blue/white LED courtesy lights w/hand-held remote control

Integral 316L stainless steel safety rails

Weather-resistant cockpit seating featuring PreFixx® coating, Tenera® element-resistant thread, DriFast® foam & StarLite® XL synthetic marine panel construction

Twin command seating w/dual-position helm & companion seats

Port lounge w/line storage

Dual-height cockpit table w/filler cushion & four polished drink holders

Disconnect switches for auxiliary & starting batteries

U-shaped aft lounge seating w/storage

Aft-facing sun lounge—converts to full-length sunpad

Molded wetbar w/integrated sink, Corian® countertop, 36-quart Igloo® cooler, trash container & integral 316L stainless steel safety rail

Demand water system w/26-gallon capacity

Fire extinguisher

Battery parallel emergency switch

Custom patterned cockpit carpet

Pneumatic-assist transom door

Bimini top in color-coordinated non-fading Sunbrella® acrylic fabric w/SeaMark™ vinyl undercoating

Cockpit cover in color-coordinated non-fading Sunbrella acrylic fabric w/SeaMark vinyl undercoating

---

## Cabin

---

Sliding/locking cabin door w/screen

Woodgrain-finish entry steps

Woodgrain-finish flooring throughout cabin

Curved Ultraleather™ sofa seating w/dual height, high-gloss Deep Cherry wood dining table & filler cushion

Custom décor pillows & draperies

Complete galley in high-gloss Deep Cherry finish w/storage and hardwood dovetailed drawers, full Corian countertop, polished stainless steel sink, concealed electric stove w/safety shut-off switch, concealed 120V/12V stainless steel refrigerator, microwave oven & concealed in-counter trash container

Entertainment center in high-gloss Deep Cherry finish w/Corian countertop, polished stainless steel 120V/12V refrigerator, 120V & 12V electrical panels

Clarion® AM/FM/CD stereo, changer control & two 150W 6 1/2" 2-way marine-grade speakers

Hanging locker

Aft cabin stateroom/full-size berth w/Sensus® memory foam mattress & full-width storage

Demand water system

120V water heater w/heat exchanger

Molded head compartment w/Vacuflush head unit, 37-gallon holding tank & dockside pumpout, molded vanity, custom-molded sink, Corian countertop, retractable shower head & exhaust fan

Fire extinguisher

Carbon monoxide detector

Automatic cabin bilge pump w/high water alarm

## Engine

---

Twin engine installation

Motorized hatch lift

Courtesy lighting

Fume detector

Automatic fire extinguisher

Thru-bolted engine mounts



Starting & auxillary marine batteries w/retainers

60-amp battery charger

Active & passive galvanic corrosion protection systems

Bilge blowers

Automatic bilge pump

Bilge high water alarm

Bennett® hydraulic trim tabs

Polished stainless steel props

---

## Manufacturer Provided Description

---

Imagine all of boating's smartest ideas in one ultimate platform. It's now arrived in the Formula 350 Crossover Bowrider. This smartly balanced combination of expanded bow and cabin space is the perfect crossover for all your boating ventures, taking you farther than ever before. The unique Formula CBR design extends the fun into the bow entertainment zone without giving up the ever important flush cockpit it.

The cabin is perfect for overnight trips or taking a break from the sun with stand-up headroom, high-end private aircraft galley styling, enclosed head, double settee and permanent, full-size memory foam bed. Of course, you know a good thing when you see it, so don't overlook this smart sensation – absolutely the best today in all around boating for the fun of it.

---

## Exclusions

---

Owner's personal belongings.

---

## Disclaimer

---

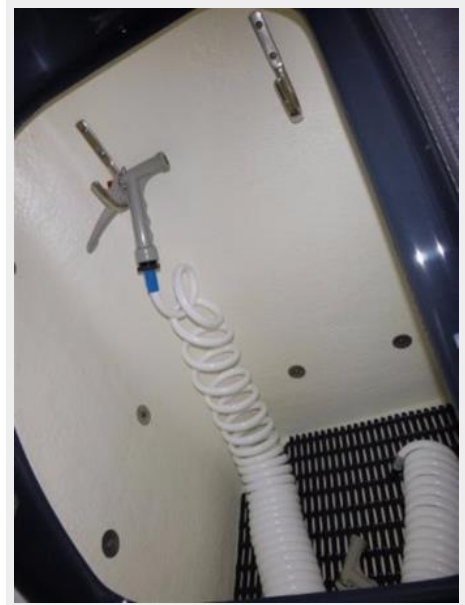
The Company offers the details of this vessel or yacht in good faith but cannot guarantee or warrant the accuracy of this information nor warrant the condition of the vessel. A buyer should instruct his representatives, agents, or his surveyors, to investigate such details as the buyer desires validated. This vessel or yacht is offered subject to prior sale, price change, or withdrawal without notice.

# PHOTOS



















# CONTACTS

---

Andrey Shestakov, leading yacht broker of the sales department of Shestakov Yacht Sales Inc. Shestakov Yacht Sales Inc., the official representative of the Miami/Fort Lauderdale FL headquarters.

## Contact details

---

Email: [andrey@shestakovyachtsales.com](mailto:andrey@shestakovyachtsales.com)

Web: [shestakovyachtsales.com/en/](http://shestakovyachtsales.com/en/)

## Telephones

---

USA: +1(954)274-4435

## Office hours

---

Monday – Saturday: **9:00 - 21:00** EDT

Sunday: **closed**

## Address

---



Harbour Towne Marina, 850 NE 3rd St,  
STE 213, Dania, FL 33004