

## NO NAME — BENETEAU



**Builder:** BENETEAU

**Year Built:** 1989

**Model:** Catamaran

**Price:** PRICE ON APPLICATION

**Location:** Germany

**LOA:** 36' 0" (10.97m)

**Beam:** 20' 0" (6.10m)

**Max Draft:** 9' 11" (3.02m)

Our experienced yacht broker, Andrey Shestakov, will help you choose and buy a yacht that best suits your needs **NO NAME — BENETEAU** from our catalogue. Presently, at Shestakov Yacht Sales Inc., we have a wide variety of yachts available on our sale's list. We also work in close contact with all the big yacht manufacturers from all over the world.

If you would like to buy a yacht **NO NAME — BENETEAU** or would like help answering any questions concerning purchasing, selling or chartering a yacht, please call **+1(954)274-4435**

---

# TABLE OF CONTENTS

---

TABLE OF CONTENTS	2
SPECIFICATIONS	3
Overview	3
Basic Information	4
Dimensions	5
Speed, Capacities and Weight	5
Accommodations	5
Hull and Deck Information	5
Engine Information	5
PHOTOS	6
CONTACTS	8
Contact details	8
Telephones	8
Office hours	8
Address	8

---

# SPECIFICATIONS

---

## Overview

---

Available Now in Bristol Condition and ready to be delivered Anywhere.

This design, first presented by BENETEAU in 1986, Crossing Catamarans received much recognition due to his Professional production, space offer and sailing performance. This specimen is handed over directly in best condition, with top-class equipment and sail-clear. The following restorations, overhauling and upgrades have been introduced since 2013:

engine

windows

upholstery

electrics

running gear

gas system

painting

steering gear

rescue island

2 drinking water tanks 360l with pressurized water system

WC

Equipment:

Electric windlass

complete cockpit harness

autopilot

Wind Generator

Refrigerator

Radio / CD

VHF

Mainsail

Genoa

Self Winding jib

Storm jib

dinghy with Outboard Motor

Cockpit shower

manual seawater pump

4 batteries à 750Ah

The salon was enlarged for the pantry, 7 berths, 2 of which are double berths

insurance and boat licenses are available for sale.

Please contact Andre: +1 305 986 6435 Specs Builder: Beneteau Designer: Philippe Briand  
Keel: Twin Keel Dimensions LOA: 35 ft 0 in Beam: 20 ft 0 in LWL: 30 ft 8 in Length on Deck: 35 ft 0 in Maximum Draft: 9 ft 11 in Displacement: 7275 lbs Dry Load Bridge Clearance: 52 ft 0 in Dry Weight: 7275 lbs Engines Engine 1: Engine Brand: Yanmar Engine Type: Inboard Engine/Fuel Type: Diesel Engine Hours: 250 Propeller: 3 blade propeller Drive Type: Direct Drive Engine Power: 12 HP Engine 2: Engine Brand: Yanmar Engine Type: Inboard Engine/Fuel Type: Diesel Location: Port Engine Hours: 250 Propeller: 3 blade propeller Drive Type: Direct Drive Engine Power: 12 HP Tanks Fresh Water Tanks: Aluminum (95 Gallons) Fuel Tanks: Aluminum (14 Gallons) Holding Tanks: Plastic Electronics VHF Navigation center Radar Log-speedometer Wind speed and direction GPS TV set Cockpit speakers Compass Plotter CD player Autopilot Depthsounder DVD player Radio Sails Battened mainsail Rigging Steering wheel Electric winch Inside Equipment Electric head Air conditioning Battery charger Microwave oven Refrigerator Heating Deep freezer Electric bilge pump Hot water Sea water pump Electrical Equipment Shore power inlet Electrical Circuit: 220V Outside Equipment/Extras Swimming ladder Cockpit table Lifteraft Cockpit cushions Electric windlass Covers Mainsail cover

## Basic Information

**Category:** Catamaran

**Model Year:** 1989

**Year Built:** 1989

**Country:** Germany

---

## Dimensions

---

**LOA:** 36' 0" (10.97m)

**LWL:** 30' 8" (9.35m)

**Beam:** 20' 0" (6.10m)

**Max Draft:** 9' 11" (3.02m)

**Clearance:** 52' 0" (15.85m)

---

## Speed, Capacities and Weight

---

**Displacement:** 7275 Pounds

**Water Capacity:** 95 Gallons

**Fuel Capacity:** 14 Gallons

---

## Accommodations

---

**Total Cabins:** 2

---

## Hull and Deck Information

---

**Hull Material:** Fiberglass

---

## Engine Information

---

**Engines:** 2

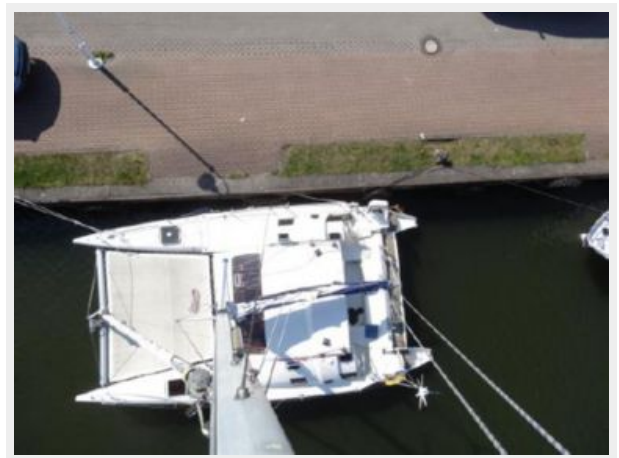
**Manufacturer:** Yanmar

**Engine Type:** Inboard

**Fuel Type:** Diesel

# PHOTOS





---

# CONTACTS

---

Andrey Shestakov, leading yacht broker of the sales department of Shestakov Yacht Sales Inc. Shestakov Yacht Sales Inc., the official representative of the Miami/Fort Lauderdale FL headquarters.

---

## Contact details

---

Email: [andrey@shestakovyachtsales.com](mailto:andrey@shestakovyachtsales.com)

Web: [shestakovyachtsales.com/en/](http://shestakovyachtsales.com/en/)

---

## Telephones

---

USA: +1(954)274-4435

---

## Office hours

---

Monday – Saturday: **9:00 - 21:00** EDT

Sunday: **closed**

---

## Address

---



Harbour Towne Marina, 850 NE 3rd St,  
STE 213, Dania, FL 33004