

## BAIR NECESSITY IV — SEA RAY



**Builder:** [SEA RAY](#)

**Year Built:** 2008

**Model:** Cruising Yacht

**Price:** **PRICE ON APPLICATION**

**Location:** United States

**LOA:** 48' 0" (14.63m)

**Beam:** 14' 8" (4.47m)

**Min Draft:** 4' 0" (1.22m)

**Max Draft:** 4' 0" (1.22m)

Our experienced yacht broker, Andrey Shestakov, will help you choose and buy a yacht that best suits your needs **Bair Necessity IV — SEA RAY** from our catalogue. Presently, at Shestakov Yacht Sales Inc., we have a wide variety of yachts available on our sale's list. We also work in close contact with all the big yacht manufacturers from all over the world.

If you would like to buy a yacht **Bair Necessity IV — SEA RAY** or would like help answering any questions concerning purchasing, selling or chartering a yacht, please call **+1(954)274-4435**

---

# TABLE OF CONTENTS

---

TABLE OF CONTENTS	2
SPECIFICATIONS	3
Overview	3
Basic Information	3
Dimensions	3
Speed, Capacities and Weight	3
Accommodations	4
Hull and Deck Information	4
Engine Information	4
DETAILED INFORMATION	5
Key Features & Upgrades	5
Factory Build Sheet	5
Exclusions	6
Disclaimer	6
PHOTOS	7
CONTACTS	13
Contact details	13
Telephones	13
Office hours	13
Address	13

---

# SPECIFICATIONS

---

## Overview

---

**\*\*\*\*\*\$10,000 PRICE REDUCTION -- OWNER SAYS SELL \*\*\*\*\***

**2008 48' Sea Ray Sundancer -- Relocated to FL from Fresh Water -- Black Hull Vessel with 338 Hours on Cummins Diesels**

**Loaded with Upgrades: Hydraulic Swim Platform, Bow + Stern Thrusters, Teak in Cockpit + Helm, Satellite TV, Cockpit A/C + Heat & Much More!!**

**"BAIR NECESSITY IV" is a Pristine 48 Sundancer with the Digital Throttle Controls & Updated SmartCraft Unit. She is a "Turn-Key" yacht that will exceed expectations**

## Basic Information

---

**Category:** Cruising Yacht

**Sub Category:** Express

**Model Year:** 2008

**Year Built:** 2008

**Country:** United States

**Vessel Top:** Hardtop

**Cockpit:** Yes

## Dimensions

---

**LOA:** 48' 0" (14.63m)

**Beam:** 14' 8" (4.47m)

**Min Draft:** 4' 0" (1.22m)

**Max Draft:** 4' 0" (1.22m)

## Speed, Capacities and Weight

---

**Displacement:** 34250 Pounds

**Water Capacity:** 110 Gallons

**Holding Tank:** 60 Gallons

**Fuel Capacity:** 400 Gallons

---

## Accommodations

---

**Total Cabins:** 2

**Total Heads:** 2

---

## Hull and Deck Information

---

**Hull Material:** Fiberglass

**Hull Color:** Black

---

## Engine Information

---

**Engines:** 2

**Manufacturer:** Cummins

**Model:** QSC-540

**Engine Type:** Inboard

**Fuel Type:** Diesel

## DETAILED INFORMATION

### Key Features & Upgrades

- 2008 48' Sea Ray Sundancer - Black Hull Vessel - Relocated to FL from Fresh Water
- Twin Cummins QSC-540 Diesels with 338 Original Hours
- Hydraulic Swim Platform
- Bow & Stern Thrusters
- Satellite TV w/ Flatscreen TV's in Cockpit, Salon, Master SR & VIP SR
- Teak Flooring - Cockpit, Helm Area & Swim Platform
- Cockpit A/C + Heat
- Twin Raymarine E120's - Radar / GPS / Chartplotters
- Underwater Lighting
- BOSE Stereo System in Cabin
- Wood Flooring - Galley

### Factory Build Sheet

- 190 BLACK HULL
- 751 BLACK CANVAS / CHAMPAGNE / WINTER WHEAT
- 721 INT.1B TIDEPPOOL-TAN/TURQ (ALABAS /CL WHIT)
- 70 TVD-CMD QSC 540 ETS (T-517PHP) DSL INBOARD
- 5970 120 VOLT / 60 CYCLE ELECTRICAL SYSTEM
- 183 HULL GELCOATED BLACK
- 649 BLACK SEA - GALLEY / HEAD COUNTER TOPS
- 653 1A & 1B SANDSTONE - SALON BUFF UPHOLSTERY
- 107 DARK CHERRY FINISH - LIGNAPAL
- 1317 TEAK FLOORING - UPPER & LOWER COCKPIT
- 97 SUN PAD - FORWARD DECK - W/ BACKREST
- 7177 DASH COVER - CANVAS
- 1007 SPOTLIGHT W/ DUAL HALOGEN BULBS (ACR)
- 795 COCKPIT AIR W/ GENERATOR UPGRADE - 120V/60
- 5818 COCKPIT REFRIGERATOR - 120V/60
- 1060 IPOD INTERFACE
- 61 HD DSS T.V. SYSTEM. ( 120V/60 ONLY )
- 570 LCD TV / DVD - COCKPIT
- 1008 LCD TV / DVD - MID STATEROOM
- 1125 BOSE LIFESTYLE 48/DVD W/ACOUSTIMAS-120V/60
- 6253 WOOD GALLEY FLOORING
- 5279 WASHER / DRYER COMBO - 120V/60
- 7127 VACUUM SYSTEM, CENTRAL - BEAM - 120V/60
- 809 MACERATOR W/ SEACOCK INTERLOCK SYSTEM

- 7104 GENERATOR SOUND BOX
- 1212 RAYMARINE E120 GPS / CHART PLOTTER / RADAR
- 635 AUTOPILOT - RAYPILOT ST 8002
- 2825 BOW THRUSTER
- 137 LIGHTING, UNDERWATER - TRANSOM
- 3731 ROD HOLDERS
- 6109 WINDLASS - CHAIN
- 994 YACHT FLAG AND FLAG POLE

## Exclusions

---

Owner's personal belongings.

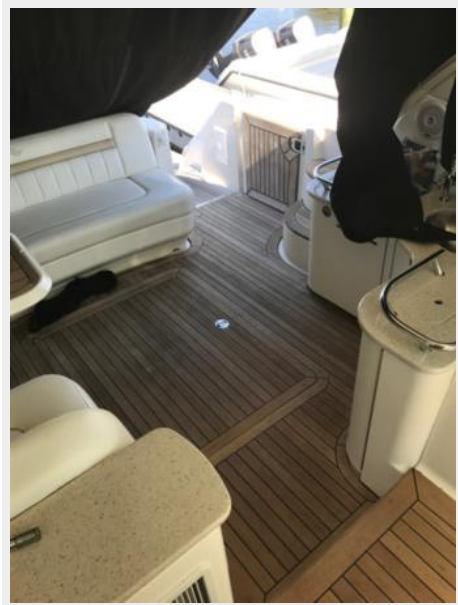
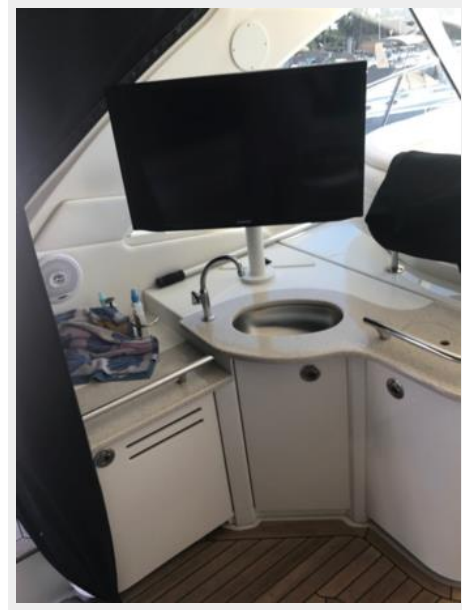
## Disclaimer

---

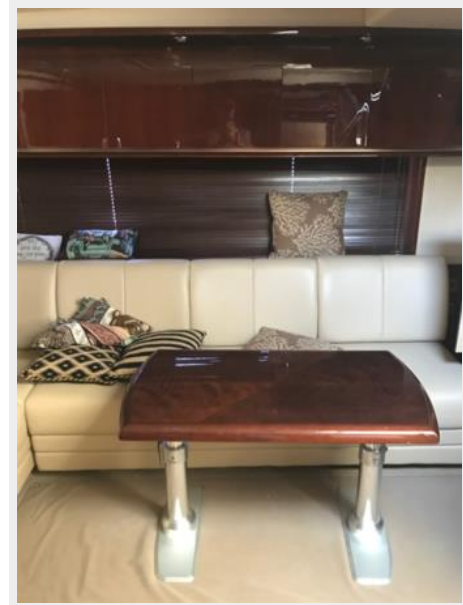
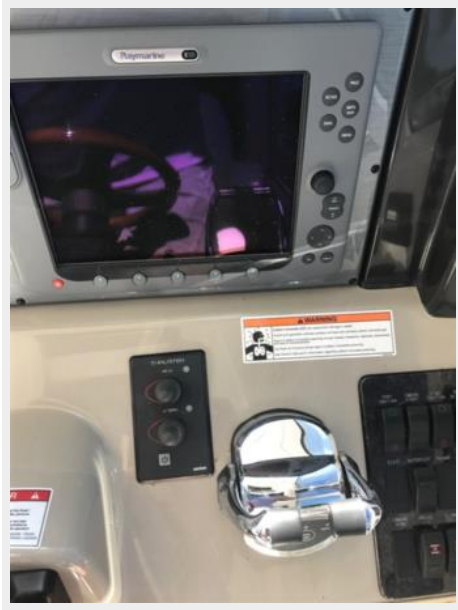
The Company offers the details of this vessel or yacht in good faith but cannot guarantee or warrant the accuracy of this information nor warrant the condition of the vessel. A buyer should instruct his representatives, agents, or his surveyors, to investigate such details as the buyer desires validated. This vessel or yacht is offered subject to prior sale, price change, or withdrawal without notice.

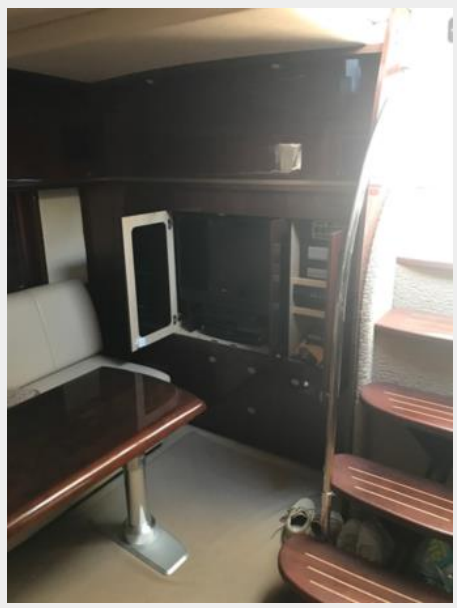
# PHOTOS





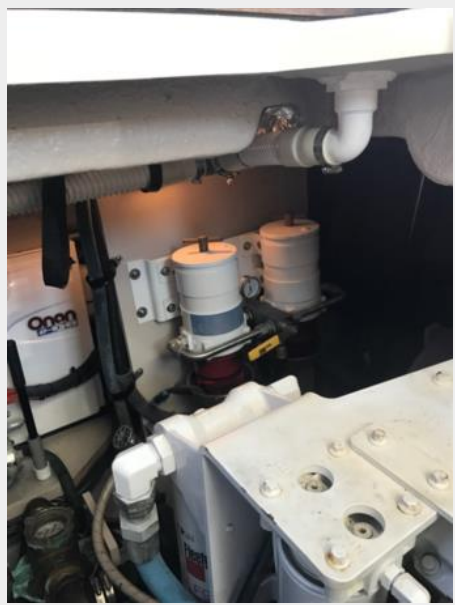












# CONTACTS

---

Andrey Shestakov, leading yacht broker of the sales department of Shestakov Yacht Sales Inc. Shestakov Yacht Sales Inc., the official representative of the Miami/Fort Lauderdale FL headquarters.

## Contact details

---

Email: [andrey@shestakovyachtsales.com](mailto:andrey@shestakovyachtsales.com)

Web: [shestakovyachtsales.com/en/](http://shestakovyachtsales.com/en/)

## Telephones

---

USA: +1(954)274-4435

## Office hours

---

Monday – Saturday: **9:00 - 21:00** EDT

Sunday: **closed**

## Address

---



Harbour Towne Marina, 850 NE 3rd St,  
STE 213, Dania, FL 33004