

## REGINA — MED YACHTS



**Судостроитель:** MED YACHTS

**Год постройки:** 2011

**Модель:** Шхуна

**Цена:** **ЦЕНА ЯХТЫ ПО ЗАПРОСУ**

**Местонахождение:** Greece

**Длина общая:** 183' 10" (56.01m)

**Ширина:** 31' 3" (9.50m)

**Макс. осадка:** 14' 1" (4.29m)

**Крейс. скорость:** 12 Kts. (14 MPH)

Купить **REGINA — MED YACHTS** а также выбрать подходящую вам яхту из нашего каталога яхт вам поможет опытный яхтенный брокер Андрей Шестаков. На сегодняшний день компания **Shestakov Yacht Sales Inc.** имеет большое количество яхт в собственном списке продаж, а также тесно сотрудничает со всеми крупными яхтенными производителями по всему миру.

Для того чтобы купить яхту **REGINA — MED YACHTS** а также проконсультироваться по любому вопросу связанному с покупкой, продажей, чартером яхт позвоните по телефону **+7(918)465-66-44**.

# ОГЛАВЛЕНИЕ

ОГЛАВЛЕНИЕ	2
ХАРАКТЕРИСТИКИ	4
Обзор	4
Основная информация	4
Размеры	4
Скорость, вместимость и масса	5
Размещение	5
Корпус и палуба	5
ПОДРОБНОЕ ОПИСАНИЕ	6
TECHNICAL SPECIFICATIONS	6
AUXILIARY MACHINERY	6
Other Options	7
Insulation	7
Electrical Equipment	7
Galley	8
Electronics	8
Sail Handling Gear	9
Safety & Fire Protection	9
Features	9
Accommodations	10
Remarks	10
Исключения	11
Отказ от ответственности	11
ФОТОГРАФИИ	12
КОНТАКТЫ	20
Контактная информация	20
Телефоны	20
Время работы	20

---

Адрес

20

# ХАРАКТЕРИСТИКИ

## Обзор

Regina is a 56 meter classically styled schooner which was built by Med Yachts in 2011. The Yacht has been designed with elegance, romance, and space; performing as to a high performance ocean-going vessel. Regina has an exceptionally wide beam of 9.5 meters providing wide deck spaces and great areas for relaxing both inside and out; there are separate deck areas for sunbathing, alfresco dining both to the aft and forward. Regina has an exceptional interior layout designed by Aylin Örs, achieving a clean and traditional atmosphere; including the large dining and sitting saloon with an immaculate classic mahogany finish. Regina can accommodate 12 guests in 6 beautifully finished en-suite cabins. Each classically designed cabin features absolutely stunning details, such as bedheads of solid honey mousse onyx columns, walls of Afyon Marble and solid onyx sinks and flooring. The Master stateroom is full beam with a lounge area and walk-in dressing room. The second stateroom to the fore of the yacht is just as impressive. Between the staterooms there are a further 4 cabins, 2 large en suite doubles, 1 smaller double and a twin cabin with 2 single beds. There is air conditioning throughout Regina, with a fresh air ventilation system installed in all enclosed spaces. Regina is powered by Doyle Sails providing a total sail area of 1,140m<sup>2</sup> and has twin 440hp MAN engines. For security the ships alarms systems and engine data are monitored using a computerised PLC monitoring system. Regina has a steel hull built with both lateral and longitudinal frames to ensure stability of the yacht in types of sea conditions. Regina is infamously renowned for her appearance during the award winning James Bond film, Skyfall.

## Основная информация

**Тип судна:** Шхуна

**Подкатегория:** Классическая яхта

**Модельный год:** 2011

**Год постройки:** 2011

**Год обновления:** 2016

**Страна:** Greece

**Кубрик:** Да

## Размеры

**Длина общая:** 183' 10" (56.01m)

**Длина палубы:** 163' 1" (49.70m)

**Ширина:** 31' 3" (9.50m)

**Макс. осадка:** 14' 1" (4.29m)

## Скорость, вместимость и масса

---

**Крейс. скорость:** 12 Kts. (14 MPH)

**Дальность на крейсерской скорости:**  
2750

**Чистый вес:** 276 Pounds

**Вместимость воды:** 9840 Gallons

**Объем топливного бака:** 8340 Gallons

## Размещение

---

**Всего кают:** 6

**Всего коек:** 7

**Спальные места:** 12

**Всего ком. состава:** 6

**Каюты экипажа:** 5

**Койки экипажа:** 5

**Спальных мест экипажа:** 9

**Комм. состав экипажа:** 5

## Корпус и палуба

---

**Материал корпуса:** Steel

**Материал палубы:** Teak

**Комплектация корпуса:** Long Keel

**Цвет корпуса:** Dark Blue

**Дизайнер экстерьера:** Ayberk Apaydin

**Дизайнер интерьера:** Aylin Örs

# ПОДРОБНОЕ ОПИСАНИЕ

## TECHNICAL SPECIFICATIONS

Main characteristics Type: Classic Schooner Sailing Yacht Builder: Med Yachts Year: 2011 Refit: 2016 Flag: Turkish Commercial Re-Flagging: Maltese Commercial Flag Surveys completed LOA: 56.01m / 183.09ft LOD: 49.70m / 163.06ft Beam: 9.50m / 31.02ft Draft: 4.29m / 14.01ft Gross Tonnage: 292 T Hull Material: Steel construction with ST42 A Grade Steel Hull Configuration: Displacement Interior Designer: Aylin Örs Naval Architect: Ayberk Apaydin Staterooms: 6 Guests: 12 Layout: 1x Master Stateroom, 1 x Second Stateroom, 3x Doubles & 1x twin Crew Cabins: 4 Captain Cabin: 1 Classifications: RINA C HULL • MACH Yacht Propulsion Main Engines: Two (2) sets MAN D2866 LXE40, 440 HP (324 kW) @2200 rpm 24V DC electrical start, four stroke, direct injections Turbo charger and intercooler Gearboxes: ZF model W325, ratio: 3.5:1 Engine Controls: Kobelt Twin Engine Control System with smart electronic actuator Monitoring System: MAN and VDO Propulsion Units Propellers: Supplied by Eris Propellers, CU 1 (MnBronze), 4 Blades, 1100 mm diameter Shafts: 90mm diameter, Stainless Steel 1,4462 / F51/ F60 Couplings, Bearings, etc: Ermaksan Elastic Couplings, Ermaksan ER-012 Rubber Bearings and Ermaksan ER-005 Deep Sea Seal Rudder: One custom made ST42 steel Naca shape rudder with 120 mm diameter AISI 316 Stainless Steel rudder stock Steering System: HIDROMARIN, HDM3000 Electro-hydraulic steering system with hydraulic autopilot power pack

## AUXILIARY MACHINERY

Integrated Hydraulic System: Supplied by HIDROMARIN 1x Yanmar Diesel Engine 240 HP 1x Engine driven 100 cc Danfos hydraulic pump 1x 7.5 kW Electrical Engine for emergency motor pump Reservoir, manifold and valves for all hydraulic equipment HVAC (Heating, Ventilation and Air Condition System) Air Conditioning: Supplied by Frigomar, Centralised Chiller System, 240.000 BTU Capacity with fan coils for each accommodation Head Ventilation: 3x Frigomar Fresh Air Unit for air inlet and 4 Alida DTX inline type exhaust fans 2x1450 m<sup>3</sup>/h and 2x1200 m<sup>3</sup>/h Cold Rooms: There are three (2) custom made cold rooms one for vegetables and one for garbage storage, working with 230V AC compressors. Diesel Oil Filtration System: 1x Alfa Laval MIB 303 630l/h Diesel Separator Separ Filters for each Engines and Gensets 2 x Mud filters Exhaust Main Engine Exhaust: 160mm tube and expansion bellows to be of the cast steel on the engine outlet area and AISI316 Stainless Steel on water touched area. Tubbing to be adequately insulated for prevent injury of the personnel. Adequate exhaust hanger system (Supply by Ermaksan) to be provided Mufflers: Supplied by Centek, Part number 1500092 Generator and Yanmar Engine for Hydraulic Power Mufflers: Supplied by Centek, Part number 1500088 and 1500085 Generator and Yanmar Engine for Hydraulic Power Gen-Seps: Supplied by Centek, Part number 1020300 and 1020400 Gas water separators Engine Room Ventilation Intake Blowers: Supplied by Gianneschi Pumps&Blowers, One ELL/APV 506 380V 2.2 kW, 500 mm diameter, with electrically activated inox shutter damper and vibration ring. Exhaust Blowers: Supplied by Gianneschi Pumps&Blowers, One ELL/APV 406 380V 0.75 kW, 400 mm diameter, with electrically activated inox shutter damper and vibration ring. Bow Thruster: Supplied by

American Bow Thruster TRAC Model 20" 100 HP Hydraulic with proportional joystick control.

## Other Options

---

Watermakers: Supplied by Tecnicomar Two compact type Sailor C 1500 with automatic flash, 220 lt/h 380V AC Sewage Treatment Plant: Supplied by Tecnicomar Model Ecomar16, 380V AC, capacity: 6.000 lt/day Boiler: Supplied by Diko Marine 2x DSSY-M-150 380V AC 3 kW 150 Liters Stainless Steel Electrical Boilers Pumps: Fresh Water Pressure Pump 1x Ebara 2CDX 70/12 380V AC Pressure Pump 1x Gianneschi Idro Ecoinox 24V DC 55 lt/min Pressure Pump Hot Water Circulation Pump: 1x Wilo Z20/1 220V AC Pump Bilge Pump: 1x Gianneschi ACB 531/B 5,5 Kw 380V AC Pump Fire Pump: 1x Ebara 3LM40 160/4 380V AC Pump Emergency Fire and Bilge Pump: 1x Gianneschi M-BMA 40 LD-AS 3.7 kW Motorpump Black Water Discharge Pump: 1x Ebara DWO 150M 220V AC Pump Grey Water Discharge Pump: 1x Ebara DWO 150M 220V AC Pump Diesel Pump: 1x Gianneschi CP32 24V DC 100 l/min 1x Gianneschi Excelsior 4 45l/min Hand Pump

## Insulation

---

Rockwool on ceilings, boards, bulkheads and cabin partitions in accommodation area. SLP mass high density rubber sheet between cabins and crew area and engine room and cabins. A60 fire insulation with Rockwool and SLP mass high density rubber and SLP Sonic Sheets in engine room.

## Electrical Equipment

---

Generators: Supplied by KOHLER 2x 40EFOZD 40 kW 380V 50 Hz Diesel Marine Generator with Sound Insulation Cabin and Hydrolastic mounts 1x 25EFOZD 25 kW 380V 50 Hz Diesel Marine Generators as Harbour Genset with Sound Insulation Cabin and Hydrolastic mounts. Shore Power Connection: 1x OTESRAFO 45 KVA for 76 Amp service Isolation Transformer DC SYSTEM Batteries: Port side Main Engine/Generator/Harbour Generator Starting - 2x Victron AGM 12V/200AH and 4x Victron AGM 12V/120AH Deep Cycle Batteries Starboard side Main Engine/Generator Starting- 2x Victron AGM 12V/200AH and 2x Victron AGM 12V/120AH Deep Cycle Batteries Yanmar Engine Starting – 1x Victron AGM 12V/90AH Deep Cycle Battery Service batteries - 16x Victron 12V/200AH GEL Deep Cycle Batteries Batteries for Sail Winches – 10x Victron 12V/200AH GEL Deep Cycle Batteries Emergency Batteries – 2x Victron 12V/200AH GEL Deep Cycle Batteries and 1x Victron 12V/100AH GEL Deep Cycle Battery Charger for Engine Start Batteries: Supplied by Victron Model: Skyla-TG 3- Phase 24V/50A Chargers for Service Batteries: Supplied by Victron Two (2), Model: Skyla-TG 3- Phase 24V/1000A Charger for Batteries for Sail Winches: Supplied by Victron One (1), Model: Skyla-TG 3- Phase 24V/100A Charger for Emergency Batteries: Supplied by Victron One (1) Model: Centaur 24V/40A One (1) Model: Centaur 12V/20A Battery Isolators: Supplied by Victron Two (2), Model: Argo 1203SC-3 Battery Isolators Two (2), Model: Argo 702SC-2 Battery Isolators

Inverters: Supplied by Victron One (1), Model: Phoenix 24V/5.000W-230V for general use One (1), Model: Phoenix 24V/3.000W-230V for entertainment Converter: Supplied by Victron One (1), Model: Orion 24/12-20 DC-DC Converter for Radio VHF Generator Paralleling System: Two 40 kW Gensets and Power Supply work parallel with Woodward Control System Alarm and Monitoring System: A closed and insulated Control Room with air condition facilities built in Engine Room. Woodward generator paralleling monitor and control, Engines and Gensets monitors and control, tank monitors, AC and DC Volt and Amperimeters, Kobelt actuator installed on a control desk in the room. A Siemens PLC Monitoring System installed on inside steering station. Tank Monitors: Various type of level sensors made by KAYSE installed on Fuel, Fresh Water, Black and Grey Water Tanks and these sensors connected to monitors in Control Room and Siemens PLC system. Bilge Level Alarm: Eight (8) Level alarm sensors made by Hizmar connected to alarm pannel on inside steering station and Siemens PLC system. Portholes and Hatches Alarm: Siemens magnetic sensors installed on each portholes and hatches connected to Siemens PLC system. Navigation Lights Alarm: Can be seen on alarm panel on inside steering station and Siemens PLC system. Radio VHF Battery Low Voltage Alarm: Can be seen on Siemens PLC system. Main Engines Alarm/Monitor: Two (2) set MAN /VDO monitors and Heat and Oil Pressure alarm installed on steering station and Control Room. Gen-Sets and Yanmar Engine Alarm/Monitor: Four Sets Kohler and Yanmar monitors and Heat and Oil Pressure alarm installed on steering station and Control Room. Engine Room and Outside Temperator Monitor: Two sensors connected to Siemens PLC system.

## Galley

Washing Machine: 2 x Arcelik WM10E261 Dryer: 1x Arcelik WT44E302TR Dish Washer: 2x Siemens SN56N591EU Ceran Cooker: 1x Siemens ET875SC11D Oven: 1x Steel GFE9 S Steam Oven: 1x Siemens HBB6D572 Oven with Microwave: 1x Siemens HB86K572 Grill: 1x Siemens ET3756U11E Fryer: 1x Siemens ET3756A11E Plate Warming Drawer: 1x Siemens HW1405P2 Aspirator: 1x Stainless Steel Industrial Fridge and Freezer: 3x Siemens KI38SA4ONE Ice Maker: 1 x ElectroLux Coffee Machine: 2x Nespresso

## Electronics

Navigation System Two (2) 19" NSO System with 1x Additional Operating Pannel Additional Hattelang 19" Monitor GPS: 1x GS15 GPS Antenna Radar: 1x RDR1064 6kW Radar Set 1x BR-24 Broadband Radar Depth and Temperator: 1x Navico Depth and Temperator Wind System: One (1) Simrad IS20 Wind System with additional display Compass System: One (1) Simrad IS20 Compass System with additional display Autopilot System: One (1) Simrad AP28 Autopilot System with rudder feedback and DGPS Compass system VHF: One (1) Simrad RS82 VHF Radio with AHK82 dual station One (1) Simrad RD68 VHF Radio One (1) Simrad Axis 50 GMDSS VHF Marine Radio: One (1) Sailor 6310 MF/HF DSC Class A EPIRB: One (1) Simrad EP50 EPIRB SART: One (1) MC Murdo S4 SART NAVTEX: One (1) Furuno NX-300 Navtex Receiver Scanning Sonar: One (1) Interphase iSCAN 180 SE Scanning Sonar with 7" Display Mini-C GMDSS System: One (1) Sailor 6110 Mini-C GMDSS System Satellite Receiver: One (1)



Seatel C.24 Satellite Antenna with Next YE-2000X-CIS plus Satellite Receiver Music System Supplied by Bose One (1) Lifestyle28 Home Theatre System in Saloon Two (2) SA3 Power amplifier, 8 x Model 151 Outdoor Speaker and 2x RC48 remote control for back and forward deck. TV System Supplied by Samsung Type: 3D LED TV 1x 55" in Saloon 5x 32" in Cabins 1x 22" in Cabin 1x 22" in Crew Mess DVD Player and Playstation III in Saloon Communication System Internet provided with 4G modem with plugs in saloon and all cabins and also wireless. Sailor 6110 Mini-C Security Camera System Supplied by CREA Six (6) various cameras with control panel and record station.

## Sail Handling Gear

**Sails** Supplied by Doyle Sails. Main Sail on Boom: 260 sqm Mizzen Sail on Boom: 440 sqm Outer Jib Sail on Furler: 180 sqm Jib Sail on Furler: 160 sqm Staysail on Furler: 100 sqm **Furlers** Supplied by Bamar (ARTE) All hydraulically operated from main hydraulic power pack. 1x GF125 BMG80 1x GF116 BMG70 1x GF116 BMG60 **Boomvang and Backstay Tensioners:** Supplied by Bamar (ARTE) All hydraulically operated by BHP manual multifunction hydraulic panel 1x Aluminium Hydraulic Vang – 110 2x Aluminium Cylinder 16mm/40 2x Aluminium Cylinder 19mm/60 **Sail Winches:** Supplied by Antal 2x W90.3ELH 24V 3000W Electrical 2x W80.3ELH 24V 2000W Electrical 7x W70ELH 24V 1500W Electrical 2x W70ST Manual **Blocks, T Tracks, Cars, Stoppers, End Fittings, Battens, Headboards:** Supplied by Antal **Wire ropes, Ropes, Rigging Screws, Turnbuckles, Terminals, Shackles, Snap Shackles:** All supplied by Carl Stahl and Python Wire ropes: Python AISI 316 Stainless Steel 1x37 + Python AISI 316 Stainless Steel 1x19 Ropes: made by Gleinstain, spectra, DynaOne, Dyneema, DynaLite, Gemini Rigging Screws and Terminals: made by BlueWave, Stainless Steel Turnbuckles: Hi-Mod, Stainless Steel Shackles: Hi-Mod, Stainless Steel Snap Shackles: Wichard, Stainless Steel

## Safety & Fire Protection

**Engine Room Fire System:** Made by Mfire Fire Company Two (2) CO2 Bottle total 95 cbm Manual Release **Fire Extinguishers:** 5x 6kg Dry Powder 8x 2 kg Dry Powder 3x 5 kg CO2 Gas 5x 9 lt Foam **Fire Alert System:** One main panel with 16 zones One repeater panel with 16 zones Heat and smoke detectors, buttons and sirens. **Liferaft:** Supplied by Lalizas Two (2) x 10 men = 20 persons hand bag type Supplied by Lalizas 1 x Solas A pack 20 persons

## Features

**GENERAL OUTFITTINGS** Doors and Hatches: General doors made by Mahogany Wood One watertight RINA certificated door entrance of Engine Room Three (3) watertight RINA certificated deck hatches escape of Engine Room, access to Lazarette and access to Chain Locker. Three (3) weathertight hatches on superstructure. Windows: Toughened Glass 14mm Thickness Portholes: AISI 316 Stainless Steel with storm shutters. Mooring Bollards: Total six (6) AISI 316 Stainless Steel Bollards custom made. Fairleads: Total eight (8) AISI 316 Stainless Steel

Fairleads custom made. Anchor Windlass: Supplied by HIDROMARIN Two (2) vertical type with warping drum stainless steel hydraulically operated with 3.300 kg capacity. Anchor & Chain: Two (2) 300 kg each anchors with 20mm diameter 200 meters each calibrated chain Davit System: Antal t track and car worked under mainboom operated with Antal Sail Winches on mast Passerelle: Supplied by PinCraft Gemini Plus type 24GP3 in three telescopic parts, hydraulically operated 4500mm x 650 mm, with complete double fixed stainless steel handrails. Command with both manual and remote control. Boarding Ladder: Two (2) custom made AISI 316L Stainless Steel with teak carpets. Dinghy and Outboard: One (1) Zodiac 5.30 meters YL 530 DL STR Boat One (1) Yamaha 115 HP 4 Stroke Outboard Deck Upholstery: Sunbrella Canvas is used for sun shades, cushions, sunbeds, sail, boat and winch cover, etc.

## Accommodations

**Cabins:** Semi Classic” styling with Sapelli mahogany wood and veneer. All walls including bathroom is high gloss varnish, ceilings white laquered with varnished mahogany beams. Carpets laying on varnished mahogany surface as floors. Mahogany wood and veneer furniture (bed, make-up table, wardrobe, locker, shelves, work table, etc.) high gloss varnished. Sunbrella Deauville fabrics bed heads and cushions. One art painting for each cabins above bed heads. Onyx marble semi round blocks with led lights background on master cabins. Marine type spring beds and high density foam cushions. Hafele and Blum hardware on lockers, drawer, doors, wardrobes and dressing room accessories. Bticino Light Tech black colored electrical switches and plugs on the wall. Illumination by Cantalupi Led Lights with shiny gold plate. Dimmer system is used. Safe with digital combination and key for each cabins. **Bathrooms:** Mahogany walls Onix marble floor with led lights background. Onix marble sink and counter top. Duravit vitrous china home type toilets and bides Artema chromed sink and bathroom taps Artema bathroom hardware (Towel holder, waste bin, soap dish, brush holder, paper holder, etc.) HÜPPE shower cabins & Marble shower floor and walls. **Saloon:** Mahogany walls and floor Sunbrella Deauville fabrics sofas, arm chairs and cushion Mahogany Table and chairs Art paintings Sculptures Piano Hafele and Blum hardware on lockers, drawer, doors, wardrobes and dressing room accessories. Bticino Light Tech black colored electrical switches and plugs on the wall. Illumination by Cantalupi Led Lights with shiny gold plate. Dimmer system is used. **Corridor:** Mahogany walls and floor Sculptures Illumination by Cantalupi Led Lights with shiny gold plate Cantalupi Led courtesy lights. **Galley:** White lacquered walls and cupboards Black granite counter top Stainless Steel Sink Franke sink tap Hafele and Blum hardware on lockers, drawer, doors, wardrobes and dressing room accessories. Bticino Light Tech black colored electrical switches and plugs on the wall. Illumination by Cantalupi Led Lights with shiny gold plate. Dimmer system is used.

## Remarks

Finalist at the 2012 World Superyacht Awards Famously renowned for her appearance in the award winning James Bond movie, Skyfall. Hull completely re-painted Superstructure varnish completely renewed Anodes changed, paint renewed, under water hull control done. Shafts renewed Bearings, bellows renewed Propellers balanced Kitchen and crew dining area re-

designed Aft deck bar re-designed Middle deck dining & sunbathing area re-designed Two aluminum masts and two aluminum booms re-constructed All rigging wires, ropes, terminals, rails and rail cars renewed All periodic maintenances done. Upholstery, covers etc renewed. Maltese Commercial Flag surveys has been completed

## **Исключения**

---

При продаже яхты исключаются личные вещи владельца.

## **Отказ от ответственности**

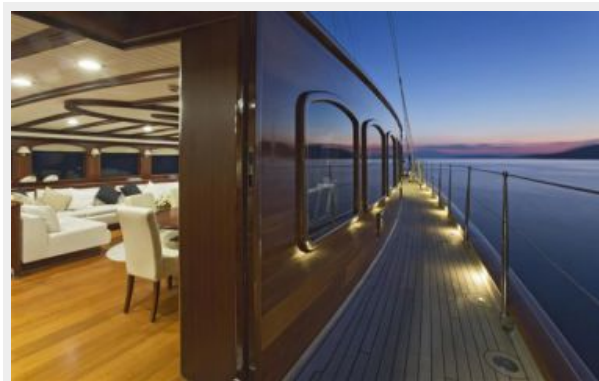
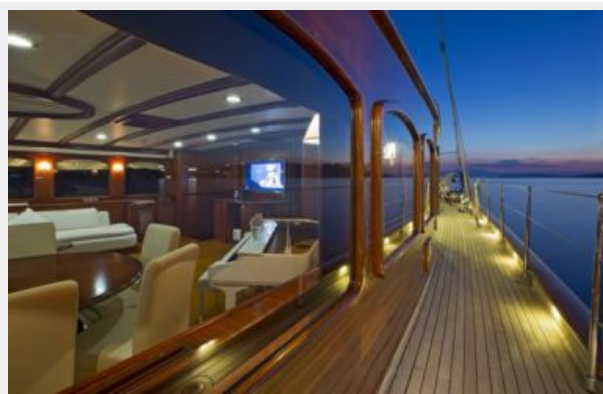
---

Компания предоставляет описание судна или яхты добросовестно, но не может гарантировать точность этой информации, а также не ручается за техническое состояние. Покупатель должен проинструктировать своих агентов или оценщиков исследовать представленную информацию более подробно, по собственному желанию. Продажа судна или яхты, изменение цены или снятие с продажи будет происходить без предварительного уведомления.

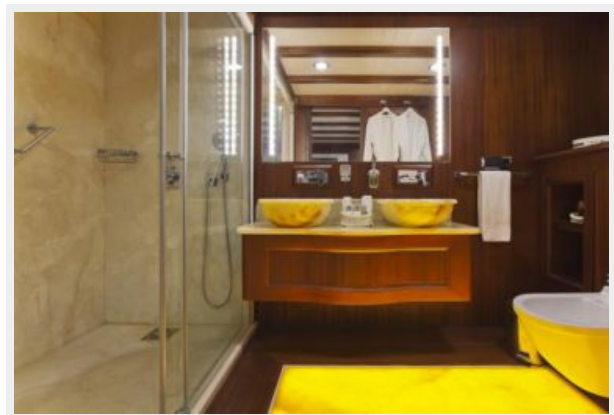
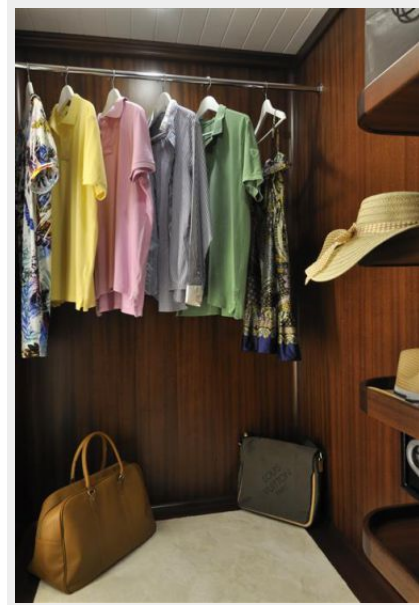
# ФОТОГРАФИИ





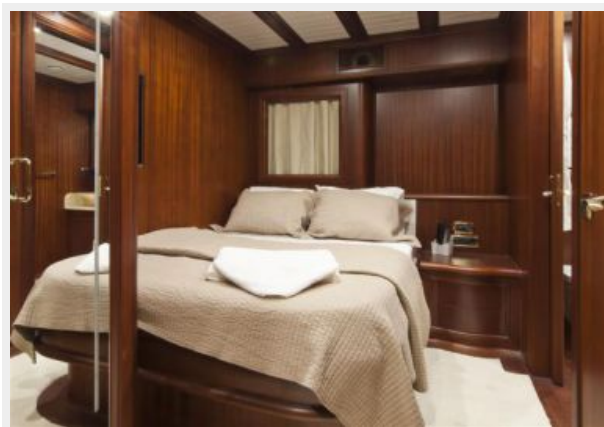














# КОНТАКТЫ

---

Андрей Шестаков (Andrey Shestakov) – ведущий яхтенный брокер отдела продаж яхт и судов компании Shestakov Yacht Sales Inc. Официальный представитель Shestakov Yacht Sales Inc. для русскоговорящих клиентов в центральном офисе компании в Майами/Форт Лодердейл/Флорида/США.

## Контактная информация

---

Email: [andrey@shestakovyachtsales.com](mailto:andrey@shestakovyachtsales.com)

Web: [shestakovyachtsales.com](http://shestakovyachtsales.com)

## Телефоны

---

Краснодарский край: **+7(918)465-66-44**

США, Майами, Флорида: **+1(954)274-4435**

## Время работы

---

Понедельник – Суббота: **9:00 - 21:00**  
EDT

Воскресенье: **Закрито**

## Адрес

---



Harbour Towne Marina, 850 NE 3rd St,  
STE 213, Dania, FL 33004