

INFINITI OF COWES — OYSTER YACHTS



Судостроитель: [Oyster Yachts](#)

Год постройки: 2011

Модель: Палубный парусник

Цена: ЦЕНА ЯХТЫ ПО ЗАПРОСУ

Местонахождение: United Kingdom

Длина общая: 74' 9" (22.77m)

Ширина: 19' 3" (5.85m)

Мин. осадка: 9' 7" (2.90m)

Купить **Infiniti of Cowes — Oyster Yachts** а также выбрать подходящую вам яхту из нашего каталога яхт вам поможет опытный яхтенный брокер Андрей Шестаков. На сегодняшний день компания **Shestakov Yacht Sales Inc.** имеет большое количество яхт в собственном списке продаж, а также тесно сотрудничает со всеми крупными яхтенными производителями по всему миру.

Для того чтобы купить яхту **Infiniti of Cowes — Oyster Yachts** а также проконсультироваться по любому вопросу связанному с покупкой, продажей, чартером яхт позвоните по телефону **+7(918)465-66-44**.

ОГЛАВЛЕНИЕ

ОГЛАВЛЕНИЕ	2
ХАРАКТЕРИСТИКИ	3
Обзор	3
Основная информация	3
Размеры	3
Скорость, вместимость и масса	4
Размещение	4
Корпус и палуба	4
Информация о двигателе	4
ПОДРОБНОЕ ОПИСАНИЕ	5
Specification	5
Исключения	26
Отказ от ответственности	26
ФОТОГРАФИИ	28
КОНТАКТЫ	32
Контактная информация	32
Телефоны	32
Время работы	32
Адрес	32

ХАРАКТЕРИСТИКИ

Обзор

Infiniti of Cowes is a beautiful Oyster 72 that has been maintained to the highest of standards by a discerning owner and the experienced crew.

The Oyster 72 is a truly stunning yacht with beautiful lines and a performance to match. The light maple joinery below decks ensures a modern contemporary feel to the yacht.

Infiniti has not chartered and has been solely used privately, mostly in Mediterranean and Caribbean seas.

Infiniti had all new standing rigging and all systems serviced and checked in late 2016, ensuring she is in turn key condition and ready to go for her next owner.

Inspection of this fine yacht is highly recommended. However, we can also offer a “virtual tour” which you can enjoy by clicking on the Virtual Tour link below.

We hope you enjoy the tour.

Основная информация

Тип судна: Палубный парусник

Модельный год: 2011

Год постройки: 2011

Страна: United Kingdom

Размеры

Длина общая: 74' 9" (22.77m)

Длина по ватерлинии: 64' 10" (19.75m)

Ширина: 19' 3" (5.85m)

Мин. осадка: 9' 7" (2.90m)

Скорость, вместимость и масса

Водоизмещение: 105821.88576 Pounds **Вместимость воды:** 264.172052 Gallons

Объем топливного бака: 528.344104
Gallons

Размещение

Всего кают: 1

Всего коек: 3

Спальные места: 8

Всего ком. состава: 3

Корпус и палуба

Материал корпуса: Carbon Composite

Цвет корпуса: White

Информация о двигателе

Производитель: Cummins

Модель: QSB 5.9

Тип двигателя: Inboard

Тип топлива: Diesel

ПОДРОБНОЕ ОПИСАНИЕ

Specification

HULL NUMBER Oyster 72/12A.

HULL CONSTRUCTION A special NPG gelcoat and a vinylester laminating resin that incorporates a custom, monolithic (single-skin) E-glass/Carbon/Kevlar composite laminate, specially designed for Oyster by High Modulus, who have designed the structure to exceed the ABS requirements (1994) for Offshore Racing Yachts.

HULL FINISH White hull with *cove line and double boot top lines in Awlgrip jet black*.

DECK CONSTRUCTION Moulded in GRP with balsa core. G5 styling design.

DECK FINISH Teak laid decks.

KEEL High performance bulb (HPB) external lead keel.

RUDDER Fully protected skeg-hung rudder.

STERN DESIGN The stern design incorporates a platform instep for bathing and boarding, finished with teak slats. *This area includes a custom made drop-in stainless steel bathing/boarding ladder with oval tube treads (stowed in lazarette) and three moulded GRP steps, trimmed with teak treads, incorporated into the transom for easy access to the stern deck.*

EURCD Built to comply with the requirements for Category A – Ocean.

CHARTER CODING *Built to MCA Category 2 with all associated safety equipment*

fitted.

ANCHOR *50kg CQR main anchor and 100m 14mm chain.*

30kg Bruce pattern anchor with 10m x 10mm chain and 100m 18mm warp, attached by eye and shackle.

WINDLASS *A Lewmar V6 vertical gypsy/drum type, hydraulic anchor windlass.*

DECK ACCESS *Midship gateway stanchions with stainless steel hinged boarding ladders, which close up to form the side-gates.*

Gate to pushpit.

Stainless steel bathing ladder.

Socket in top transom step for passerelle.

HATCHES *Oyster custom vertical drop-down, smoked acrylic, washboard system for main companionway fitted with stainless steel ventilation grille.*

Lewmar alloy-framed deck hatches.

Gebo alloy-framed opening hullports and closed portlight.

1 x Gebo Econoline short opening port from forward end of aft cabin into the cockpit.

All forward hatches (excluding those on the picklefork) upgraded to Rondal flush.

Flush Rondal hatch over galley for crew access.

Rondal flush sail locker hatch.

CANVASWORK *Fold down companionway sprayhood in Weathermax 'Toast' with central zip-up window and leather covered stainless steel grabrail to aft end.*

Weathermax 'Toast' Bimini with window panel plus 2 side mesh panels.

On-boom tensile awning in Weathermax 'Toast', new 2015.

Weathermax 'Toast' padded canvas cover for cockpit table with velcroed flaps for access with stowage pocket on end.

Weathermax 'Toast' canvas cover for steering wheels, zipped cover for pedestals and canvas cover for RIB to go over davits.

Weathermax 'Toast' RIB sponson cover.

Fitted crew covers to saloon seating and chart table in Weathermax.

Cockpit seat cushions with laminated foam backrests, foredeck sunbathing cushions, quarter pushpit seat cushions in Weathermax 'Toast', with laminated backrests in Silvertex.

DECK PLUMBING A hot and cold freshwater deck shower in transom locker.

High pressure saltwater deck wash/fire pump with hose and nozzle. Connection in anchor locker.

High capacity 50 psi freshwater anchor wash pump with bayonet connector in anchor locker.

COCKPIT Walk-through teak-laid cockpit.

Twin stainless steel drinks holders to pedestals.

COCKPIT TABLE *Teak gloss varnished cockpit table with stainless steel framework incorporating footbars, folding leaves, insulated GRP box and partly refrigerated with Frigomatic keel-cooled DC refrigeration unit.*

STEERING A Whitlock Mamba torque rod linkage system, installed with twin pedestals, each incorporating a 1.168m (46") diameter Mini-Maxi type stainless steel wheel, friction brake, and three bearing pedestal steering unit.

Steering wheels covered with brown suede leather extending to partially cover the spokes.

DAVITS *Simpson Cooney transom mounted, long reach '72 Davits'. Maximum all-up total load 400kgs/pair.*

GENERAL *Anchor locker divided athwartships with removable partition.*

Stainless steel pulpit and pushpit.

Twin four-man liferaft stowage under pushpit seats with hydrostatic release units fitted (MCA requirement).

Removable stainless steel/teak chocks on foredeck for RIB and foredeck structure strengthened.

4 pairs of custom stainless steel Aqualine cleats, fitted onto the bulwark with chafe strips.

2 stern cleats fixed under aft quarter seats.

Vetus stainless steel dorades with WHITE painted interior and bug screen meshes.

Lazarette locker with twin stainless steel gas struts.

Flush hinges to gas locker, lazarette lid and anchor lockers.

Stern quarter pushpit seats in teak and stainless steel.

2m stainless steel pole on aft deck for aerials with swivelling floodlight switched at pedestal. Pole fitted with tie points to reduce wobbling.

Low-level courtesy white LED lighting around cockpit, walkthrough and transom steps.

MAST and RIGGING *Cutter rig including self-tailing secondary winches, staysail halyard, clutch, furler and staysail.*

Hall Spars in-mast furling aluminium spar with hydraulic drive at gooseneck.

Hydraulic drive ram to control outhaul with control buttons at starboard pedestal.

Carbon jockey pole (split system), including stowage brackets in sail locker.

LED boom light over cockpit table (cluster of two).

Preventer lines.

Navtec backstay tensioner and boom vang with positive support. Control from stainless steel panel in cockpit.

Running backstays 13mm Spectra 15T.

Two folding mast steps at masthead.

No Strike ion dissipater at masthead and mast step bonded to keel bolt.

Status powered TV antenna at masthead for TV reception.

Five year rig inspection, late 2016.

New rod rigging, late 2016.

New running rigging, late 2016.

HEADSAIL FURLING Reckmann RF 90-3 hydraulic furling headsail, driver motor serviced and *feeder foils replaced, late 2016.*

Reckmann RF 90-2 hydraulic furling staysail, drive motor serviced and *feeder foils replaced, late 2016.*

WINCHES

All winches are Lewmar Ocean.

2 x Lewmar 88-3 EST three-speed, electric, stainless steel, self-tailing primary winches on guest/crew cockpit coamings.

2 x Lewmar 68 CEST two-speed, *electric*, chrome, self-tailing, secondary winches on guest/crew cockpit coamings.

1 x Lewmar 65 CEST two-speed, electric, chrome, self-tailing mainsheet winch to starboard abaft the helmsman.

1 x Lewmar 46 CST two-speed, manual, chrome, self-tailing traveller control line winch to port abaft the helmsman.

1 x Lewmar 65 CST two-speed, manual, chrome, self-tailing, mainsail halyard winch fitted on deck.

1 x Lewmar 65 CST two-speed, manual, chrome, self-tailing, yankee and staysail halyard winch fitted on the mast.

SPINNAKER GEAR *Carbon painted spinnaker pole, vertically stowed on mast with butt hoist winch, halyard plus jammer, pole topping lift plus jammer, fore guy, one pair of sheets and one pair of guys.*

Deck gear for spinnaker: 2 x Harken padeyes for sheets on rail, 2 x Harken pad eyes for guys, 6 x Lewmar screw in foreguy blocks and padeyes and one pair of single clutches for foreguy at side deck.

4 x Harken padeyes upgraded to have screw in base to make removable.

6 x Lewmar foreguy fittings flush mounted into the teak deck.

SAILS

All sails by Dolphin Sails:

In Mast Furling Mainsail - Radial design - GXLD Carbon / Dyneema laminate, sewn with Tenara thread and treated with Sailkote Plus (late 2015).

130% Furling Yankee - Radial design - DYS Dyneema laminate, sewn with Tenara thread and treated with Sailkote Plus (early 2015).

Furling Staysail - Radial design - DYS Dyneema laminate, sewn with Tenara thread and treated with Sailkote Plus (early 2015).

GENERAL

Eight berths in four cabins + 1 seaberth in forward cabin, excluding the saloon.

All berths, including doubles, are counted as sea berths with doubles having split mattresses to allow a central lee-cloth to provide the necessary support and separation.

Interior joinery finished in maple.

Designed to be modern and coordinated, whilst remaining practical and durable at sea. Essential features include sculpted fiddles and grabrails, 'shadow-gap' joints between panels and Oyster custom knobs for lockers and drawers.

Teak grooved soleboards with matt varnish finish.

Avonite galley surfaces with upstands in Midnight Sky (G3-1050) gloss finish.

Avonite surfaces in heads in Sandpiper satin finish.

Custom heads colour scheme with Oyster Grey Formica F7929 Velour, GRP mouldings to match (except trays) and wenge timber.

Hansgrohe quality mixer taps and thermostatic shower controls.

A mirror, towel rail, toothbrush tumbler, soap dispenser, toilet roll holder and toilet brush fitted in heads.

Headlining in off-white vinyl.

Upholstery for dressing table stool, headboards and berth surrounds are in Alcantara.

Saloon and aft cabin seating in JMT Sauvage 'Toast' Leather.

Crew covers to saloon seating and chart table in Planada material.

Lee screens on sea berths.

Deck saloon windows have pull-down Oceanair Skysol blinds.

Oceanair Skyscreen blinds with integral mosquito mesh to all overhead deck hatches.

Owners cabin companionway hatch to have custom bug and blackout screen.

Hullports fitted with roman blinds.

Skyscreen for galley hatch.

Flyscreens to all opening hull and coachroof ports.

Six white Caframo Bora fans.

FORWARD SAIL LOCKER Accessed via its own deck hatch.

Double sockets in waterproof box.

EN SUITE HEAD/ SHOWER Custom GRP mouldings and Formica.

Lockers for stowage.

Fitted with ITT Jabsco PAR quiet flush toilet.

FORWARD DOUBLE CABIN Fitted with drawers beneath the berth.

Settee to starboard with pullman berth over.

Hanging locker and mirror.

Door to its own en suite forward heads and shower stall.

GALLEY Avonite work surfaces incorporate timber fiddles with Avonite upstands and twin stainless steel sinks.

Seagull charcoal filter system and dedicated faucet for filtered freshwater supply at the galley sink.

Plentiful overhead lockers and stowage provided for the Oyster crockery and glasses.

Large locker (aft of the cooker) fitted with two shelves.

Rubbish bin.

Stainless steel trim to fiddles.

Two extra bulkhead lockers.

Maple mug rack.

Brushed stainless steel splashbacks.

SINKS Twin stainless steel with quality Hansgrohe mixer taps.

BOILING WATER TAP *Quooker.*

COOKER & HOB *Custom gimballed NEF domestic cooker, gas hob with electric oven.*

Brushed stainless steel AEG HU4360-M cooker hood with built-in light and extractor fan.

MICROWAVE *Miele 8151-2 stainless steel microwave.*

REFRIGERATOR/FREEZER Stainless steel front opening Frigomatic refrigerator and insulated, top-opening, GRP freezer box.

Penguin pullout refrigerated vegetable drawer.

DISHWASHER *Miele Slimline integrated dishwasher.*

WASHER *Bosch washer/dryer, new September 2016.*

SALOON Access from the cockpit is via a set of teak timber steps with timber and stainless steel handrails.

Extremely light and airy with seven windows, two of the forward three open. Two opening hullports, one each side, contribute to the great feeling of light and space in the saloon.

Large U-shaped settee to port around *an electrically controlled raise/lower saloon table in maple*

with teak inlay line. Manually spins 360° as well.

Customised housing for TV to lift-out from behind seating at port aft end of saloon.

Book rail in port saloon hullport recess. Two extra stainless steel book rails and dividers in saloon - one on the shelf inboard of the starboard hullport to match the standard one to port and one on the shelf aft of the port side saloon seating.

Hullport recesses in plain maple.

Overhead grabrails.

NAVIGATION AREA A comfortable forward-facing navigation station is located aft to starboard with provision for the stowage of half-folded Admiralty charts. A bookshelf is provided for navigational books, almanacs, etc. The chart table area is customised around the electronics and navigational equipment, which is flush-mounted.

ENGINE ROOM Engine room access via saloon floor.

PORT DOUBLE GUEST CABIN Fitted with drawers beneath the berth.

Hanging locker and mirror.

Overhead (aircraft style) stowage bin.

Door to its own en suite heads and shower stall, which is shared with the starboard side twin cabin and also acts as a day head.

EN SUITE HEAD/ SHOWER Access from both port double guest cabin and aft passageway.

Custom GRP mouldings and Formica.

Lockers for stowage.

Fitted with ITT Jabsco PAR quiet flush toilet.

STARBOARD TWIN GUEST CABIN Fold down top berth, so when not in use it forms a backrest for the lower berth.

Overhead (aircraft style) stowage bin.

Fitted with drawers beneath the berth.

Hanging locker and mirror.

OWNER'S STATEROOM Double berth offset to port of the centreline with two under berth drawers, a settee and dressing table with mirror on underside of lid.

Pair of large hanging lockers with mirror and various other cupboards.

Small peninsula unit to starboard of head of berth.

Surface mounted headboard divided into three sections with a vertical joint between each.

2-brick safe with push-button keypad in hanging locker.

Book rail on shelf to port.

Printer in slide out stowage under seat.

A companionway hatch entrance from the aft deck, via a deck hatch and a custom foldaway stainless steel ladder in locker under companionway hatch, offset to starboard.

A door leads forward to starboard to the en suite toilet and separate stall shower.

EN SUITE HEAD/ SHOWER Custom GRP mouldings and Formica.

Lockers for stowage.

Fitted with ITT Jabsco PAR quiet flush toilet.

5. ENTERTAINMENT

AUDIO VISUAL SYSTEMS

FORWARD DOUBLE TV.

CABIN *DVD/Tuner unit, iPod dock and headlining speakers.*

GALLEY *Headlining speakers and switch, connected to saloon or forward system.*

SALOON/COCKPIT *TV with Kramer distribution unit.*

DVD/tuner, surround sound processor and subwoofer.

CD tuner with 4 Alpine speakers for cockpit including remote control, iPod dock, magic eye system and power supplies. Forward cockpit speakers mounted on aft facing seat fronts.

AFT PORT DOUBLE *TV.*

CABIN *DVD/Tuner unit, iPod dock and headlining speakers.*

OWNER'S *TV.*

STATEROOM *DVD/Tuner unit, iPod dock and headlining speakers.*

6. ENGINEERING

ENGINE *Single Cummins QSB 5.9, turbo-charged diesel engine 'manufacturer rated' to 156kW (212 HP) at 2,500 RPM. Fitted with a ZF63A gearbox, which gives a 2.68:1 reduction ratio and incorporates an 8-degree down angle.*

Engine Racor filter upgraded to twin 75/500FGX unit with changeover and vacuum condition gauge and stainless steel drip tray below filters.

ENGINE HOURS *Approximately 3,668 hours at May 2017.*

PROPELLER 4-bladed, 762mm (30") diameter Brunton Varifold folding propeller.

ROPE CUTTER *Ambassador rope cutter on shaft, prop with Prospeed.*

ALTERNATORS Mastervolt 24v/150 Amp with Alpha Pro regulator.

GENERATOR *Onan MDKAF 22.5kW.*

GENERATOR HOURS Approximately 3,773 hours at May 2017.

BOWTHRUSTER Sleipner 285 electric, 20Hp, 300mm tunnel bowthruster with joystick control at port pedestal and *duplicate control panel fitted at starboard pedestal.*

STEERING SYSTEM Whitlock Mamba torque rod linkage system, installed with twin pedestals, each incorporating a 1.168m (46") diameter Mini-Maxi type stainless steel wheel, friction brake and three bearing pedestal steering unit.

HYDRAULICS *Lewmar Commander 400-5 system located under galley floor to operate headsail furling, mainsail furling and windlass.*

AIR CONDITIONING *Air conditioning system to:*

Owners Stateroom - 12,000 BTU handler with own condenser unit in engine room.

Aft starboard cabin - 4,000 BTU handler sharing 12,000 BTU condenser in engine

room.

Aft port cabin - 8,000 BTU handler sharing 12,000 BTU condenser in engine

room.

Forward cabin - 1 x 12,000 BTU stoway unit.

Saloon - 2 x 16,000 BTU self-contained units.

Galley - 1 x 12,000 BTU self-contained unit.

6. ENGINEERING (continued)

HEATING

Reverse cycle from air conditioning.

WATERMAKER

Seafresh 2016A (approximately 276 litres/hour) watermaker with auto freshwater flush assembly.

7. TANKAGE AND PLUMBING

FUEL

2,000 litres approximately (440 imp gallons/528 us gallons) in x 2 GRP tanks.

Gulf filters fuel-polishing system plumbed for both fuel tanks.

WATER

1,000 litres approximately (220 imp/264 us gallons) in x 2 GRP tanks.

TANK TENDER GAUGES

4-way Tank Tender contents gauge. Back-up calibrated dipsticks are fitted and calibration charts supplied to all tanks.

HOT WATER From two insulated approximately 73 litres (16 imp/19 us gallons) tanks heated by the engine's heat exchanger, or by thermostatically-controlled 220v, 1.25kw immersion heater elements powered by the generator/shore power.

PRESSURISED HOT Cleghorn Waring AQM6 pump with pressure accumulator tank.

AND COLD

FRESHWATER SYSTEM

HOLDING TANKS Three polyethylene tanks to the heads, one forward and two aft. Each tank is configured for gravity discharge with additional ability to pump out from on deck. The tanks are fitted with Wema electric tank capacity gauges. (The two forward WCs share one holding tank).

GREY WATER Four greywater tanks are each fitted with a float switch and a Whale "Gulper" pump, to give automatic evacuation of all showers and washbasins. The galley sinks pump directly overboard via an electric Whale "Gulper" pump manually activated by a Vimar rocker switch.

MANIFOLD SYSTEM Two bronze manifold systems in engine room, fed by one 51mm (2") and one 63.5mm (2.5") strainer and seacock.

Water strainers are Aquafax heavy-duty, 50mm (2") and 63.5mm (2.5") nickel-plated bronze for the manifolds.

All seacocks dezincification resistant (DZR) copper alloy quarter-turn ball valves with bronze through-hull fittings.

The main engine and generator exhausts have a GRP standpipe (without seacock).

8. ELECTRICS

SHIP'S SUPPLY 24V.

RINGMAIN Mains 220v AC circuit with 8 double, 13 Amp, 3-pin sockets from the Vimar 'Idea' range with chrome 'Classica' surrounds.

OTHER ELECTRICAL *24v waterproof 3-pin socket at steering pedestal for searchlight.*

SOCKETS *24v waterproof 3-pin socket in anchor locker with circuit for anchor light or searchlight. 10A breaker at DC panel.*

2 x additional double sockets in the aft cabin.

1 x additional double socket in the saloon at the chart table.

12v DC cigar lighter type socket at chart table including dropper.

BATTERIES A bank of 4 x 6v batteries is wired in series to give approximately 820 Amp hours (20-hour rate). These batteries are heavy-duty, 'deep-cycle', Rolls Surrette dual container, type 6-CS 25P, fitted with "Hydrocaps".

2v gel cells to give total capacity of 1200 Amp/hours and 3 x 100 amp battery chargers.

Separate 12v/110 Amp gel battery for navigation communications to include a CD volt and amp meter.

Power from a separate pair of 12v Varta batteries, wired in series to give 24v, rated at 640 Cold-Cranking Amps (EN) is devoted to engine and generator starting. Separate 24v Varta battery bank rated at 640 Cold-Cranking Amps (EN) linked to the engine and generator start batteries to form a 48v battery bank for powering the bowthruster.

BATTERY Mastervolt 150 Amp, 24v second engine alternator, linked to a Mastervolt Alpha Pro

MANAGEMENT Regulator.

3 x Mastervolt Chargemaster 24v, 50Hz, 100Amp battery chargers,

independently controlled.

Generator starting battery is charged by its own 24v alternator.

Masterview Easy Control Panel acting as a voltmeter, ammeter and ampere/hour meter to accurately monitor the ship's domestic batteries and engine start battery.

Mastervolt MVG 12/55 gel cells, wired in series to give approximately 110 Amp hours (20-hour rate).

Masterlink BTM charger controller.

Emergency link system.

8. ELECTRICS (continued)

INVERTER

220v MASS sine wave inverter 24v/1500w.

220v MASS sine inverter 24v/5000w for domestic equipment.

SHOREPOWER

32 Amp 220v dockside power cable, 3-core double-insulated PVC, 21.3m (70') in length. Hubbell socket located in transom step. The dockside end of the cable is fitted with a 3-pin, 32 Amp plug.

Second 30 Amp shore lead for air conditioning loads.

INTERIOR LIGHTING

Downlight type halogen lights in polished chrome finish with downlighters over

reading areas.

Fluorescent lights and downlights over the galley work surfaces.

Red "courtesy" footlights at deck saloon steps. Three further red LED low-level lights, one each in galley, owners stateroom step and aft passageway.

Two overhead red LED lights at chart table and galley.

Three overhead lights in each heads.

Automatic door light to refrigerator.

Torches with stowage in each cabin.

EXTERIOR LIGHTING LED type boom light over cockpit table.

Low level cockpit LED lighting.

Downlighters and uplighters on all spreaders and separate foredeck light, switched from pedestal (one switch for all downlighters and one for all uplighters).

Light(s) mounted in lazarette.

Tri white navigation light at masthead.

Aqua Signal 55 bow and stern navigation lights.

9. NAVIGATION AND COMMUNICATION

COMPASSES Flush-mounted Sestrel Major 150mm diameter compass at each pedestal with internal light.

SAILING *Raymarine i70 equipment:*

INSTRUMENTS Speed and depth including transducers and wind including mast head unit at companionway console.

Raymarine P70 autopilot control head and i70 graphic display at port pedestal.

Raymarine i70+ close hauled wind at each pedestal.

Raymarine i70+ graphic displays, one at each pedestal, one at the chart table and one in the owner's cabin.

Two Raymarine i70+ graphic displays over companionway.

Raymarine i70+ graphic display in forward cabin.

GPS *Furuno GP33 GPS stand alone unit with switch to link into Raymarine system.*

RADAR *Echomax dual band radar target enhancer.*

CHART PLOTTER *Raymarine A70 radar/plotter at the chart table.*

Raymarine E127 Wide radar repeater mounted at starboard steering pedestal.

AIS *Raymarine Class B AIS 500.*

AUTOPILOT *Raymarine P70 controller at port pedestal and Phoenix 550w hydraulic drive.*

WINDEX *Windex at masthead.*

NAVTEX *Furuno Navtex NX300 with antenna mounted at the stern.*

VHF RADIO *Raymarine 240E VHF (with USA channels) at the chart table with its own speaker.*

Second handset and speaker in the cockpit.

9. NAVIGATION AND COMMUNICATION (continued)

SATELLITE PHONE *BGAN Fleet 250 system and cordless phone with 3G phone antenna on lower spreader.*

PC *DC-powered mini PC (new May 2016) and remote panel at chart table.*

19" PC screen in chart table panel.

Network outlets at chart table, owners' stateroom, aft port cabin, aft starboard cabin and forward cabin.

USB outlets (including USB hub) at chart table and forward cabin.

WiFi access point and router equipment.

10. SAFETY

LIFERAFT *2 x Ocean 4C ISO 9650 Type 1, 4-man rafts in canisters with Solas B packs.*

Next service date September 2017.

EPIRB *Tron 40S MkII 406 GPS EPIRB mounted in float-free container at pushpit.*

RADAR REFLECTOR *Echomax 230 radar reflector on mast.*

BILGE PUMPS *Electric bilge pump Utility Puppy 3000 with Par hydro air switch.*

High-level bilge alarm.

Henderson MkV double action manual bilge pump (rated at 135 lpm) operated from the cockpit and fitted with metal deck plate.

Each bilge pump is fitted with a Whale type strum box and all suction lines can be lifted to enable debris to be cleared.

DECK SAFETY

2 x lifebuoys (with name of vessel and port painted on).

2 x lifebuoy lights and drogues.

1 x Danbuoy attached to 1 x lifebuoy.

1 x buoyant line – 18m LOA.

12 x lifejackets.

4 x parachute flares.

6 x red handheld flares.

2 x smoke signals.

8 x Thermal protective aid (stowed in grab bag).

Portable VHF radio.

Life saving signal tables.

Training manual.

Instruction manual – schedule of maintenance.

Webbing jackstays run from Wichard folding pad eyes forward and aft.

MOB button at port pedestal.

Emergency tiller.

FIRE EXTINGUISHERS

Various including automatic fire extinguisher in engine bay.

Engine room fire extinguisher upgraded to auto/manual release unit with discharge indicator clearly visible.

ALARMS

Gas alarm at galley.

Bilge alarm for each compartment.

Float switches at watertight compartments with led warning lights and alarms.

10. SAFETY (continued)

OTHER SAFETY Watertight bulkheads and doors.

FEATURES *IMO approved Marco 5723 horn on mast.*

Smoke detectors outside cabins.

11. GENERAL

RIB/DINGHY *AB 14AL RIB with stand-up console, VHF and Fishfinder.*

Evinrude 50hp outboard motor.

Custom lifting bridle for RIB for occasional foredeck stowage.

WARPS AND FENDERS *220v inflation pump for inflatable fenders.*

CROCKERY Oyster customised Wedgwood bone china crockery.

CUTLERY Oyster customised Robert Welch stainless steel cutlery.

SAFE *2-brick safe with push button keypad.*

HEYCO MARINE TOOL KIT

ASSORTED TOOLS,

SPARES AND MANUALS

NB: All personal belongings and all other items not expressly listed in the above inventory are excluded from the sale.

Viewing through Oyster Brokerage.

Inventory verified by the owner.

Issue 4 (OG/OB/lh)

In this transaction we are acting as Brokers only. We are informed that this sale is not related to the Owner's business, trade or profession. Whilst every care has been taken in their preparation, the correctness of these particulars is not guaranteed. The particulars are intended only as a guide and they do not constitute a term of contract. A prospective buyer is strongly advised to check the particulars and where appropriate to have the vessel fully surveyed and inspected, sea trialled and opened up.

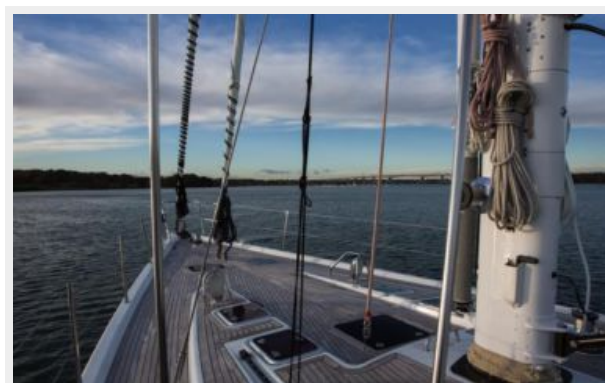
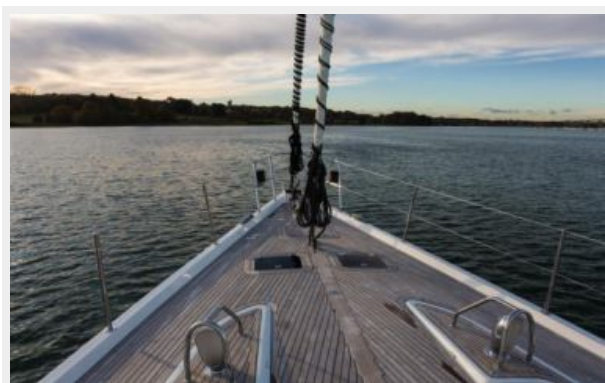
Исключения

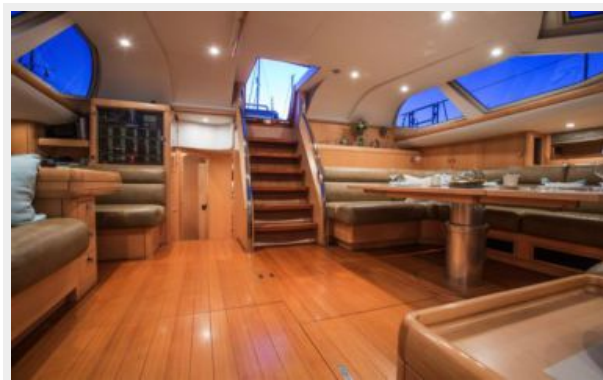
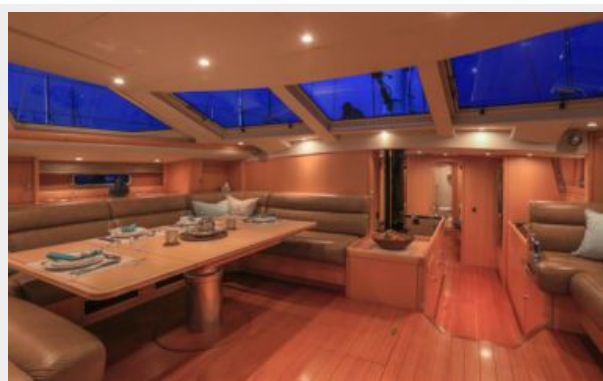
При продаже яхты исключаются личные вещи владельца.

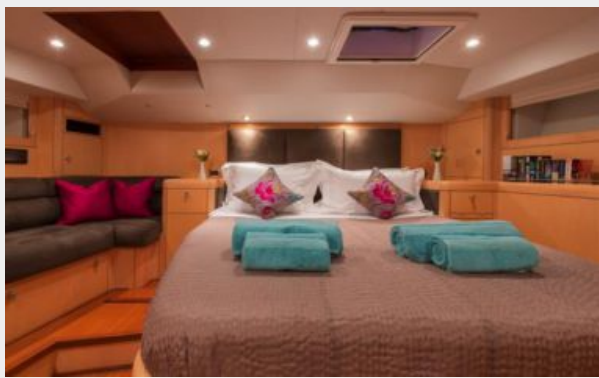
Отказ от ответственности

Компания предоставляет описание судна или яхты добросовестно, но не может гарантировать точность этой информации, а также не ручается за техническое состояние. Покупатель должен проинструктировать своих агентов или оценщиков исследовать представленную информацию более подробно, по собственному желанию. Продажа судна или яхты, изменение цены или снятие с продажи будет происходить без предварительного уведомления.

ФОТОГРАФИИ









КОНТАКТЫ

Андрей Шестаков (Andrey Shestakov) – ведущий яхтенный брокер отдела продаж яхт и судов компании Shestakov Yacht Sales Inc. Официальный представитель Shestakov Yacht Sales Inc. для русскоговорящих клиентов в центральном офисе компании в Майами/Форт Лодердейл/Флорида/США.

Контактная информация

Email: andrey@shestakovyachtsales.com

Web: shestakovyachtsales.com

Телефоны

Краснодарский край: **+7(918)465-66-44**

США, Майами, Флорида: **+1(954)274-4435**

Время работы

Понедельник – Суббота: **9:00 - 21:00**
EDT

Воскресенье: **Закрето**

Адрес



Harbour Towne Marina, 850 NE 3rd St,
STE 213, Dania, FL 33004