

BLACK POWDER — HATTERAS



Builder: HATTERAS

Year Built: 1976

Model: trawler

Price: \$299,500 USD

Location: United States

LOA: 48' 10" (14.88mm)

Beam: 16.5

Min Draft: 4' 6" (1.37mm)

Cruise Speed: 8 Knots Kts. (9 MPH)

Max Speed: 10 Knots Kts. (12 MPH)

Our experienced yacht broker, Andrey Shestakov, will help you choose and buy a yacht that best suits your needs **BLACK POWDER — HATTERAS** from our catalogue. Presently, at Shestakov Yacht Sales Inc., we have a wide variety of yachts available on our sale's list. We also work in close contact with all the big yacht manufacturers from all over the world.

If you would like to buy a yacht **BLACK POWDER — HATTERAS** or would like help answering any questions concerning purchasing, selling or chartering a yacht, please call **+1(954)274-4435**

TABLE OF CONTENTS

TABLE OF CONTENTS	2
SPECIFICATIONS	4
Overview	4
Basic Information	4
Dimensions	4
Speed, Capacities and Weight	5
Accommodations	5
Hull and Deck Information	5
Engine Information	5
PHOTOS	6
WHEELHOUSE	6
WHEELHOUSE HELM	6
WHEELHOUSE DINETTE & WATCH BERTH	6
SALOON SOFA	6
SALOON FIREPLACE	6
GALLEY	6
GALLEY WITH NEW TILES	7
MASTER STATEROOM ISLAND BERTH	7
MASTER STATEROOM VANITY & BUREAUS	7
MASTER STATEROOM VIEW HEAD	7
MASTER STATEROOM HEAD	8
MASTER STATEROOM HEAD & TUB	8
SALOON VIEW AFT	8
FORWARD STATEROOM	8
GUEST STATEROOM VIEW AFT	9
GUEST SR HEAD & SHOWER STALL	9
ENGINE VIEW FORWARD	9
FLYBRIDGE HELM	9

FLYBRIDGE VIEW AFT	9
FLYBRIDGE CUSTOM DINETTE	9
SIDEDECK	10
BOATDECK	10
COCKPIT	10
SEASTAIRS	10
ON HARD	11
ON HARD	11
SALOON BAR	11
FOREDECK	11
GUEST STATEROOM VIEW AFT	12
DOCKSIDE	12
CONTACTS	13
Contact details	13
Telephones	13
Office hours	13
Address	13

SPECIFICATIONS

Overview

With her raised wheelhouse and sturdy profile, the Hatteras 48 Long Range Cruiser, BLACK POWDER is a no-nonsense serious offshore passage maker. Port & starboard wheelhouse doors provide quick outside access for shorthanded line handling. The 48 LRC is heavily built on a solid fiberglass, full-displacement hull with rounded bilges and a long, deep keel with the running gear well protected. Her high flared bow keeps her decks dry. Her full-beam owner's stateroom has an athwartship island queen berth with generous storage for liveaboards and even a bathtub in the ensuite head. The guest cabin is forward with an attached head with stall shower. On the main deck, the galley is forward in the saloon, and the wheelhouse is fitted with a U-shaped dinette and a watch berth. BLACK POWDER has a custom dinette on the boatdeck just abaft the flybridge shaded by it's own bimini. With her twin continuous duty rated bulletproof Detroit 4-53's producing 112HP each, BLACK POWDER will cruise at 8-9 knots burning only 9 gallons per hour. At a 7-knot cruising speed the range far exceeds 2,000 miles. This broker has helped a number of clients purchase well-loved Hatteras LRC's 48's that have ably cruised from Alaska to Newfoundland. Trips from New England via Bermuda to say Antigua are well within her capability, though she is equally well-suited for Great Looping or living aboard.

Basic Information

Category: trawler

Sub Category: Raised Pilothouse

Model Year: 1976

Year Built: 1976

Country: United States

Dimensions

LOA: 48' 10" (14.88mm)

LWL: 43' 4" (13.21mm)

Beam: 16.5

Min Draft: 4' 6" (1.37mm)

Speed, Capacities and Weight

Cruise Speed: 8 Knots Kts. (9 MPH)

Cruise Speed Range: 1500

Max Speed: 10 Knots Kts. (12 MPH)

Water Capacity: 430 Gallons

Holding Tank: 80 Gal Gallons

Fuel Capacity: 1370 Gal Gallons

Accommodations

Total Cabins: 2

Total Berths: 3

Sleeps: 5

Total Heads: 2

Hull and Deck Information

Hull Material: FRP

Deck Material: Fiberglass

Hull Configuration: Full Displacement

Hull Color: Jet Black

Hull Designer: Jack Hargrave

Exterior Designer: Jack Hargrave

Engine Information

Engines: 2

Manufacturer: Detroit Diesel

Engine Type: Inboard

Fuel Type: Diesel

PHOTOS

WHEELHOUSE



WHEELHOUSE HELM



WHEELHOUSE DINETTE & WATCH BERTH



SALOON SOFA



SALOON FIREPLACE



GALLEY



GALLEY WITH NEW TILES



MASTER STATEROOM ISLAND BERTH



MASTER STATEROOM VANITY & BUREAUS



MASTER STATEROOM VIEW HEAD



MASTER STATEROOM HEAD



MASTER STATEROOM HEAD & TUB



SALOON VIEW AFT



FORWARD STATEROOM



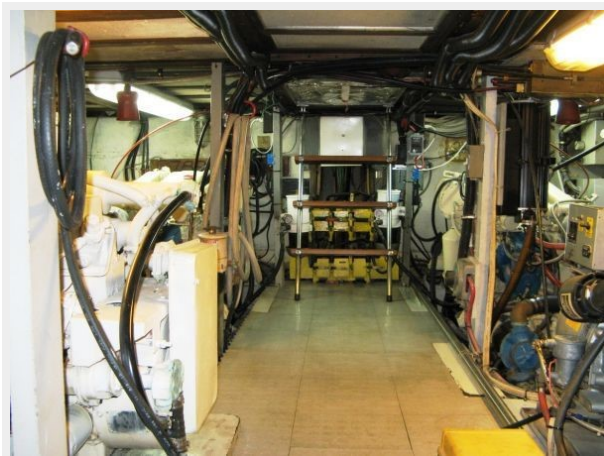
GUEST STATEROOM VIEW AFT



GUEST SR HEAD & SHOWER STALL



ENGINE VIEW FORWARD



FLYBRIDGE HELM



FLYBRIDGE VIEW AFT



FLYBRIDGE CUSTOM DINETTE



SIDEDECK



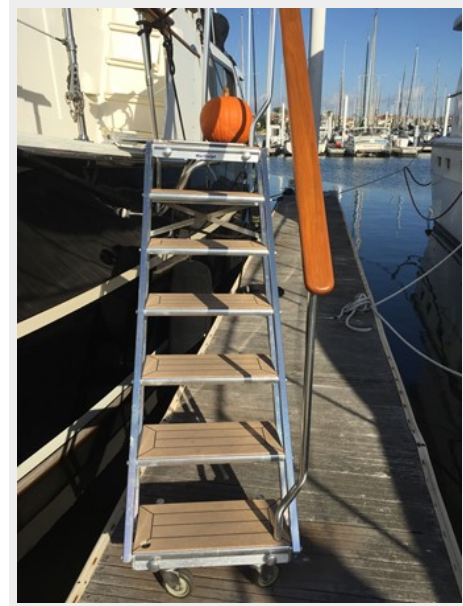
BOATDECK



COCKPIT



SEASTAIRS



ON HARD



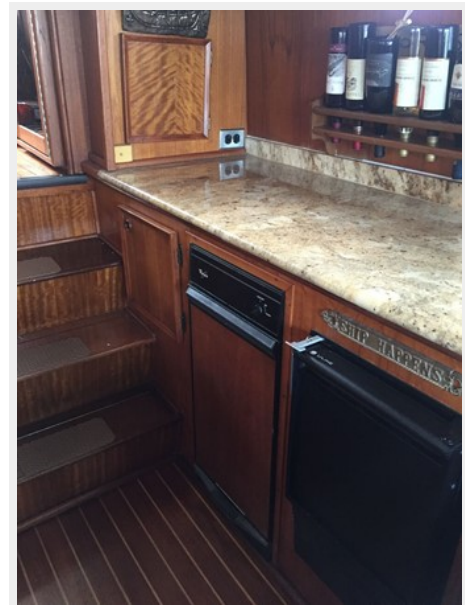
ON HARD



FOREDECK



SALOON BAR



GUEST STATEROOM VIEW AFT



DOCKSIDE



CONTACTS

Andrey Shestakov, leading yacht broker of the sales department of Shestakov Yacht Sales Inc. Shestakov Yacht Sales Inc., the official representative of the Miami/Fort Lauderdale FL headquarters.

Contact details

Email: andrey@shestakovyachtsales.com

Web: shestakovyachtsales.com/en/

Telephones

USA: +1(954)274-4435

Office hours

Monday – Saturday: **9:00 - 21:00** EDT

Sunday: **closed**

Address



Harbour Towne Marina, 850 NE 3rd St,
STE 213, Dania, FL 33004