

SHENANIGANS — LAZZARA



Судостроитель: LAZZARA

Год постройки: 2000

Модель: Моторная яхта

Цена: **ЦЕНА ЯХТЫ ПО ЗАПРОСУ**

Местонахождение: United States

Длина общая: 76' 0" (23.16m)

Ширина: 19' 1" (5.82m)

Мин. осадка: 4' 6" (1.37m)

Крейс. скорость: 19 Kts. (22 MPH)

Макс. скорость: 22 Kts. (25 MPH)

Купить **SHENANIGANS — LAZZARA** а также выбрать подходящую вам яхту из нашего каталога яхт вам поможет опытный яхтенный брокер Андрей Шестаков. На сегодняшний день компания **Shestakov Yacht Sales Inc.** имеет большое количество яхт в собственном списке продаж, а также тесно сотрудничает со всеми крупными яхтенными производителями по всему миру.

Для того чтобы купить яхту **SHENANIGANS — LAZZARA** а также проконсультироваться по любому вопросу связанному с покупкой, продажей, чартером яхт позвоните по телефону **+7(918)465-66-44**.

ОГЛАВЛЕНИЕ

| | |
|-------------------------------|----|
| ОГЛАВЛЕНИЕ | 2 |
| ХАРАКТЕРИСТИКИ | 6 |
| Обзор | 6 |
| Основная информация | 6 |
| Размеры | 6 |
| Скорость, вместимость и масса | 6 |
| Размещение | 7 |
| Корпус и палуба | 7 |
| Информация о двигателе | 7 |
| ПОДРОБНОЕ ОПИСАНИЕ | 8 |
| VESSEL WALKTHROUGH | 8 |
| FOREDECK | 8 |
| SIDEDECKS | 8 |
| AFT DECK | 8 |
| SWIM PLATFORM | 9 |
| SKYLOUNGE | 9 |
| ELECTRONICS | 9 |
| BOAT DECK | 9 |
| TENDER | 10 |
| SALON | 10 |
| SALON ENTERTAINMENT CENTER | 10 |
| DINING | 10 |
| DAYHEAD | 11 |
| GALLEY | 11 |
| MASTER STATEROOM | 11 |
| PORT VIP STATEROOM | 11 |
| STARBOARD VIP STATEROOM | 11 |
| CAPTAIN'S CABIN | 12 |

| | |
|------------------------------|----|
| CREW QUARTERS/KIDS BUNK ROOM | 12 |
| OFFICE | 12 |
| SATELLITE T.V. SYSTEM | 12 |
| WASHER / DRYERS | 12 |
| FRESH WATER SYSTEM | 12 |
| WATERMAKER | 13 |
| MECHANICAL / ENGINE ROOM | 13 |
| ENGINE ROOM VENTILATION | 13 |
| FIRE SYSTEM | 13 |
| FUEL SYSTEM | 13 |
| OIL CHANGE SYSTEM | 13 |
| BILGE PUMPS | 14 |
| GENERATORS | 14 |
| ELECTRICAL | 14 |
| BOW THRUSTER | 14 |
| STABILIZERS | 14 |
| TRIM TABS | 14 |
| AIR CONDITIONING | 14 |
| HEAD SYSTEM | 15 |
| BROKER'S REMARKS | 15 |
| EXCLUSIONS | 15 |
| Исключения | 15 |
| Отказ от ответственности | 15 |
| ФОТОГРАФИИ | 16 |
| Forward Profile | 16 |
| Foredeck SunPad | 16 |
| Enclosed Bridge Helm | 16 |
| Enclosed Bridge Helm | 16 |
| Enclosed Bridge Helm | 16 |

| | |
|-------------------------------|----|
| Skylounge | 16 |
| Skylounge | 17 |
| Skylounge | 17 |
| Skylounge | 17 |
| Skylounge Aft Deck | 17 |
| Skylounge Aft Deck | 17 |
| Skylounge Aft Deck Boat Deck | 17 |
| Tender | 18 |
| Tender | 18 |
| Aft Deck / Dining | 18 |
| Aft Deck / Dining | 18 |
| Aft Deck | 18 |
| Aft Deck | 18 |
| Aft Deck | 19 |
| Aft Deck Wet Bar | 19 |
| Full Beam Main Salon | 19 |
| Main Salon / Formal Dining | 19 |
| Main Salon / Formal Dining | 19 |
| Main Salon / Formal Dining | 19 |
| Main Salon | 20 |
| Main Salon | 20 |
| Main Salon | 20 |
| Main Salon | 20 |
| On Deck Galley Dinette | 20 |
| On Deck Galley Dinette | 20 |
| Country Kitchen Style Galley | 21 |
| Galley | 21 |
| Galley | 21 |
| Staircase to Helm / Skylounge | 21 |

| | |
|---------------------------------------|-----------|
| Galley | 21 |
| Galley | 21 |
| Full Beam Master Stateroom | 22 |
| Master Stateroom | 22 |
| Master Stateroom | 22 |
| Master Stateroom | 22 |
| Master Head with Jacuzzi Tub | 22 |
| Master Head His and Hers Sinks | 22 |
| Port Guest Stateroom | 23 |
| Port Guest Stateroom | 23 |
| Port Ensuite Guest Head | 23 |
| Starboard Ensuite Guest Head | 23 |
| Starboard Guest Stateroom | 23 |
| Starboard Guest Stateroom | 23 |
| Master / Guest Staterooms Foyer | 24 |
| Captain's Cabin | 24 |
| Crew / Kids Upper / Lower Berth Cabin | 24 |
| Office | 24 |
| Office | 24 |
| Full Beam Aft Engine Room | 24 |
| Full Beam Aft Engine Room | 25 |
| Engine Room | 25 |
| GA | 25 |
| Transom / Swim Platform | 25 |
| КОНТАКТЫ | 26 |
| Контактная информация | 26 |
| Телефоны | 26 |
| Время работы | 26 |
| Адрес | 26 |

ХАРАКТЕРИСТИКИ

Обзор

"Shenanigans" displays warmth in her overall design. The layout includes camphor wood throughout, three staterooms aft and two forward with an office. All staterooms have en-suite heads with an additional on deck day head. The galley offers Lazzara's signature country kitchen design with a large breakfast nook. The skylounge/helm area is spacious and inviting.

Основная информация

Тип судна: Моторная яхта

Подкатегория: Sky Lounge

Модельный год: 2000

Год постройки: 2000

Страна: United States

Верх: Enclosed

Открытая палуба мостика: Да

Размеры

Длина общая: 76' 0" (23.16m)

Ширина: 19' 1" (5.82m)

Мин. осадка: 4' 6" (1.37m)

Скорость, вместимость и масса

Крейс. скорость: 19 Kts. (22 MPH)

Макс. скорость: 22 Kts. (25 MPH)

Водоизмещение: 99208.0179 Pounds

Чистый вес: 50 Pounds

Вместимость воды: 350 Gallons

Вместимость сточного бака: 150 Gallons

Объем топливного бака: 1700 Gallons

Размещение

Всего кают: 5

Спальные места: 6

Всего ком. состава: 5

Каюта капитана: Да

Каюты экипажа: 2

Койки экипажа: 3

Корпус и палуба

Материал корпуса: Fiberglass

Материал палубы: Teak

Комплектация корпуса: Modified V-Hull

Дизайнер корпуса: Lazzara Yachts

Дизайнер экстерьера: Lazzara Yachts

Дизайнер интерьера: Lazzara Yachts

Информация о двигателе

Двигатели: 2

Производитель: MTU

Модель: 12V183TE

Тип двигателя: Inboard

Тип топлива: Diesel

ПОДРОБНОЕ ОПИСАНИЕ

VESSEL WALKTHROUGH

"SHENANIGANS" displays warmth in her overall design. The layout includes camphor wood throughout, three staterooms aft and two forward with an office. All staterooms have en-suite heads with an additional on deck day head. The galley offers Lazzara's signature country kitchen design with a large breakfast nook. The skylounge/helm area is spacious and inviting.

FOREDECK

Fiberglass Non-Skid Painted Deck Raised Bulwarks 21" with Stainless Steel Safety Rail
Courtesy Deck Lighting in Bulwarks 42" Custom Designed Modern Burgee Flag Staff Port and Starboard 17" Mooring Cleats with Recessed Chocks Fresh Water Dock Side Inlet Windlass Maxwell 3500 with Chain Wildcat 24v and Up/Down Foot Switches Anchor Chain Riding Pawl 200' x 3/8" Chain with Stainless Steel Plow Anchor Stainless Steel Anchor Chute with Roller Port and Starboard Wing Storage Lockers Four (4) Recessed Sunpad with Cushions, Cover, and Storage Below Ventilation/Escape Hatch 24" Bomar with Skylight Port and Starboard Midship Boarding Gates with Boarding Lights Port Side Fresh Water Deck Fill Port and Starboard Stainless Steel Cleats with Hawse Starboard Waste Pump Deck Fitting Stereo Sony Splash Proof with CD and iPod Dock and Two (2) 7" Speakers

SIDEDECKS

Full Beam Grand Main Salon Cat Walk 9" with Combination Rain Gutter/Grab Rail Port and Starboard Midship 12" Mooring Cleats Cat Walk Painted Non-Skid 11" High Stainless Steel Safety/ Fender Placement Rail Cabin Side Overhang Courtesy Lights

AFT DECK

Headroom 6'9" 9' Length Overhead Courtesy Lights with Dimmer Switch Overhead Stereo Speakers Two (2) 7" with Volume Control Deck Hatch to Boat Deck 28" Long x 24" Wide Six (6) Step Fixed Stainless Ladder with Teak Treads to Boat Deck Bulkhead Vertical Storage for Seven (7) Step Marquipt Sea Stairs with Handrail Overhang Recessed Stern Flood Lights Aft main Salon Floor to Ceiling Glass Bulkhead - Tinted Sliding Glass Door with Polished Stainless Steel Frame Port and starboard Boarding Gates with Boarding Lights Optional Port and Starboard clutch Throttles with Bow Thruster Control Main Engine Start/Stop Buttons Covers Snap on for Aft Deck Controls Wet Bar Built-in with Upgraded Corian Countertop Sink Polished Stainless Steel with Cold Water Spigot Refrigerator with Ice Maker Undercounter - New 6/16 Undercounter Storage 110V Outlet with GFI and Cover Telephone Jack with Cover Starboard "L" Settee with Cushions, Cover, Storage Below Teak Dining Table with High Gloss Varnished

Fixed 79" L x 28" W x 27" H Polished Stainless Steel Pedestals for Table 27" H Starboard "L" Settee with Cushions, Cover, Storage Below Port "L" Settee with Cushions, Cover, Storage Below Teak Table Fixed High Gloss Varnished 24" x 22" with Cover Cover for Teak Dining Table Emergency Aft Deck Engine Room Escape Hatch 22" x 22" Access Gate to Swim Platform/Engine Room Access Child Gate with Plexiglass Panel Steps to Swim Platform (4) with Teak Treads

SWIM PLATFORM

3'6" Length Teak Decking Centerline 18" Stainless Steel Mooring Cleat Three (3) Euro Style, Stainless Steel Hoop Rails - 35"H x 25"W Transom Storage Locker Transom Shower Fresh Water Hot and Cold with Pull-out Sprayer Engine Room Water-tight Door with Dog downs, Lock, and Viewing Porthole Port and Starboard 6" Flip-up Tender Cleats Starboard Built-in Wave Runner Garage with Hydraulic Lift Hatch NOTE: Wave Runner Needs to be Serviced Port Storage Pod with Hydraulic Lift Hatch and Fold Down Platform Integrated Swim Ladder Transom Underwater Lights (4) Color White

SKYLOUNGE

Headroom 6'4" The Skylounge in Shenanigans is spectacular. The helm area has electronic Recaro captains chairs. Two camphor cabinets with ostrich leather trim separate the helm from the lounge area. Starboard is a desk with chair that makes a great place for a computer. Also located starboard are two fantastic rattan and bamboo chairs. Port is an L-shaped lounge that electronically folds out into another bed. Complimenting this area even further is a rattan and bamboo chest that acts as the coffee table. Chairs and lounge are covered in custom fabrics. Port and starboard windows slide back. A leather woven boarder lines the perimeter of the skylounge.

ELECTRONICS

Garmin 15" touch Screen Chartplotter 8215 with GPS Antenna - 10/15 Radar Garmin 72 Mile with 6' Open Array Antenna 12KW HD - 10/15 Green Marine 15" Day Viewable Display Screen 10/15 Auto-Pilot/Simrad AP60 New 6/17 Color Graph Depth Finder/Furuno FCV-582L Depth Finder/Digital Simrad Combi Isis Ships System Monitor Control - 10/15 VHF/Icom IC-M502 VHF/Standard Horizon Explorer with Remote Handset Hailer/Seahail Garmin/GPS Map 4208 w/ 9" Display Screen Searchlight Electric Remote/ITT Jabsco Clutch and Throttles Electronic with Synchronizer Compass Electric/Simrad IS12 Horns/Dual Trumpet Air Buehl Bow Thruster Control Helm Wheel 14" Destroyer Style Hepworth Brand Display Screen 17" NEC Windshield Wipers - Three (3) with 31" Blades Dual Speed with Washers Two (2) Overhead Red Chart Lights

BOAT DECK

Deck Fiberglass Painted Non-Skid Accessed Via Enclosed Bridge or Aft Deck Port and Starboard Twin Hydraulic Bulwark Mounted Davits **NOTE: Davits Completely Rebuilt and Painted 10/2015** Davits are Hydraulic Boom and Rotation Courtesy Deck Lights Fresh Water Wash Down Port and Starboard Fore and Aft Drains ACR/Sarsat - Expires 11/19/2017 Flood Lights Recessed in Hardtop Overhang Overhang Deck Lights Overhang Stereo Speakers Ships Bell 11" Brass/Chrome Collapsible Access Ladder to Skylounge Cabin Top Grill Cabinet Fiberglass with Grill Hatch Cover and Storage Below Sink Stainless Steel with Cold Water Faucet Grill Electric 15" L x 9" W with Dual Burners (Miele) Starboard "L" Settee with Cushions, Covers, and Storage Below Dining Table - Corian 5' L x 2'6" W x 29" H Polished Stainless Steel Support Post Table with Removable Umbrella Life Rafts Two (2) 6-man Canister with Cradles (Revere) - Next Certification 02/2019 Flag Staff Stainless Steel Removable **NOTE: Boat Deck Overhang Extends Over Aft Deck Seating**

TENDER

14' 2000 Novurania Hard Bottom Inflatable Weight Approx. 800 lbs Center Console with Bench Seat 50 HP Yamaha Four Stroke with Power Trim and Tilt and 980 hrs Hydro-stabilizer on Outboard Bilge Pump, Fuel Gauge, Nav Lights Strong Back Cable Style Deck Tie Downs Removable Deck Chocks Tender Storage Cover

SALON

Headroom 6'3" Upon entering the salon you will immediately notice the amount of space offered which evokes the feeling of a much larger yacht. To port is an L-shaped sofa with storage beneath cushions. SHENANIGANS is decorated in custom fabrics. Additional seating is offered with two swivel barrel chairs located starboard. Also, located starboard is a bar that includes an Avanti wine chiller and storage cabinets.

SALON ENTERTAINMENT CENTER

T.V. 31" Sony with DSS Receiver Sony Blue Ray Player Yamaha AM/FM Receiver

DINING

The Dining Salon is located forward of the Salon. Dining table has an oval glass top table with a stone column base. There are six chairs adorned with custom fabrics that compliment the salon area. The forward bulkhead is home to a camphor cabinet with granite top that offers storage for china, flatware and lines. Above is a glass cabinet to display stemware. Forward on the starboard side through a privacy door is the day head beautifully accented with gold fixtures, custom walls and marble flooring.

DAYHEAD

Located just forward to starboard of Main Salon. Air Conditioning Duct Exhaust Fan Designer Sink with Single Faucet Gold Fixture Granite Floor Fresh Water Head Mirrored Medicine Cabinet Overhead LED Lighting Privacy Door with Lock

GALLEY

Headroom 6'5" Located Forward of Main Salon Port and Starboard Sliding Doors Access Foredeck Large Forward Viewing Windows with Privacy Shades Air Conditioning with Digital Thermostat Overhead with Halogen Lighting on Dimmers Ample Over and Under Counter Storage Lockers T.V. with 360° Swivel Base/18" Sylvania with DSS Receiver Granite Countertops Amtico Matching Wood Grain Flooring Stairwell - Eight (8) Steps to Enclosed Bridge/Skylounge "L" Raised Dinette with Granite Table Top Recessed Deck Wear Hanging Locker to Starboard Sink Double Stainless Steel Sink Faucet with Pull-out Sprayer Stove Four (4) Burner Cooktop with Oven (Kitchen Aid) Microwave Built-in Convection Style (Kitchen Aid) Trash Compactor (Kitchen Aid) Dishwasher (Kitchen Aid) Refrigerator/Freezer Side by Side Refrigerator Doors/Pull-out Freezer Drawer Privacy Door Between Galley and Main Salon

MASTER STATEROOM

Headroom 6'5" Centerline is a king size bed with ample of storage underneath. The custom bedding, coordinating pillows and accents create a warm and relaxed atmosphere. Located on either side of the berth are nightstands. To port is a settee. There is ample storage space throughout the Master Suite including his and her armoires, large walk-in closet with additional drawer space. En-suite head continues the connections found throughout the vessel. His and her sinks with marble top and gold and chrome fixtures. For added luxury there is a Jacuzzi tub, twin shower heads and a drop down seat.

PORT VIP STATEROOM

Headroom 6'5" The port VIP Stateroom is a mirrored image of the starboard VIP. Once more the queen size bed is adorned with custom bedding and accents. Storage can be found beneath the bed and in the cedar lined hanging locker. The en-suite HEAD has a shower, toilet and sink.

STARBOARD VIP STATEROOM

Headroom 6'5" The starboard VIP Stateroom has a queen size bed with storage beneath covered in custom bedding and designer fabrics additional cloths can be hung in the cedar lined hanging locker. For the guests enjoyment there is a full entertainment system. The en-suite HEAD has a shower, toilet and sink.

CAPTAIN'S CABIN

Headroom 6'5" Located forward to port is the Captain's Quarters. There is a raised double berth and large storage drawers built in the berth frame. Dresser, cabinets and cedar lined closet allow enough space for clothing. Custom fabrics and full entertainment system are also included. An En-suite HEAD includes shower stall, sink and toilet.

CREW QUARTERS/KIDS BUNK ROOM

Headroom 6'5" Located starboard the Crews Quarters feature over/under berths with plenty of drawer space, cedar lined locker and full entertainment system. En-suite HEAD has shower stall, sink and toilet.

OFFICE

Headroom 6'5" Located Forward and Down Seven (7) Steps from Galley Overhead with Halogen Down Lights "L" Shaped Desk with Drawers Swivel Chair on Rollers Wall Mounted Book Shelf Carpeted Floor Built-in Washer and Dryer Storage Cabinet Access to Captain's Cabin and Crew Cabin To Port Two (2) Stainless Steel Port Lights

SATELLITE T.V. SYSTEM

Sat Dome KVH Track Vision M7 - New 10/2013 T.V. Main Salon 31" Sony with DSS Receiver T.V. Skylounge 23" Toshiba with DSS Receiver T.V. Galley 18" Sylvania with DSS Receiver T.V. Master Stateroom 26" Toshiba with DSS Receiver T.V. Port Guest Stateroom 18" Sylvania with Shared DSS Receiver T.V. Starboard Guest Stateroom 18" Sylvania with Shared DSS Receiver T.V. Starboard Bunk Cabin 18" Sylvania with Shared DSS Receiver T.V. Port Bow Captain's Cabin 21" Sylvania with DSS Receiver

WASHER / DRYERS

Kenmore Individual Units Stacked Forward Crew Quarters Kenmore Individual Units Stacked Guest Foyer

FRESH WATER SYSTEM

Fresh Water Tank 350 gal Polyethylene One (1) 110v Fresh Water Pump One (1) 24v Back-up Fresh Water Pump Fresh Water Deck Fill Located Port Forward Cabin Side Two (2) Canister Style filters Two (2) Dockside Water Inlets with Pressure Reducing Valves Three (3) Fresh Water Deck Wash Downs Forward, Bridge, Aft Deck One Hot Water Heater 5 gal 110v One (1) Hot water Heater 30 gal 220v

WATERMAKER

Sea Recovery Reverse Osmosis 1,200 GPD with Auto Fresh Water Flush **NOTE:** Raw Water Pump - New 02/16/2015

MECHANICAL / ENGINE ROOM

Headroom 6'2" Access From Swim Platform Water-tight Door Access Emergency from Aft Deck Hatch Overhead Lights Fluorescent 110v Back-up 24v **Twin MTU 12V183 TE 93/1150 HP with 3200 Hours** Manual Gauge Package with Coolant Temp, Gear Oil Temp, Engine Oil Pressures, Tachometer **Gears ZF Model BW165A Ratio 2.5:1** Shafts 2 1/2" Aquamet 22 HS Lazzara's LSR Drive System Protects Shafts Props 35.3 x 42.5 x 4 Blade Nibral - Trued and Balanced 12/16 Power Steering Assist Pump Port Main Acoustical and Thermal Insulation Engine Room Fresh Water Spigot Work Bench with 3 1/2" Vice Two (2) Built-in Storage Cabinets Tool Chest Eight (8) Drawer with Tool Tray and Lid 110v Outlet with GFI Main Engine PreHeat Block Heaters Shaft Logs Adjustable Packing Style Rudder Logs Adjustable Packing Style Steering Ram - Serviced 12/2016

ENGINE ROOM VENTILATION

Supplies from Intake Vents on Boat Deck Port and Starboard Reduces Salt Mist Intake Creates Positive Pressure in Engine Room Port and Starboard Intake Fans

FIRE SYSTEM

Fireboy/Halon - Next Certification 01/2018 Auto and Manual Discharge

FUEL SYSTEM

Single 1,750 gal Fiberglass Tank with Access Plate Fuel Level Indicator through Vessels Systems Monitor Port and Starboard Fuel Fills Located Aft Hull Sides Fuel Filters Main Engines Dual Racor 1000's Water/Fuel Separator Main Engine Filters with Selector Valve and Vacuum Gauge Generators Each Single Racor 500 Fuel/Water Filter Fuel Priming Pump Engines and Generators 24v

OIL CHANGE SYSTEM

230v Reversible Pump with Digital Flow Meter Manifold System to Main Engines, Gears, and Both Generators Fresh Oil tank - 30 gal

BILGE PUMPS

Four (4) Auto/Manual 24v Three (3) High Water Bilge Alarms

GENERATORS

20kw Onan/1800 rpm with Sound Shield - 4900 hours Located Port Aft Engine Room Racor 500 Fuel/Water Separator Filter Battery 12v Starting Battery with Box and Battery Switch Oil Change System Exhaust Muffler **20kw Onan**/1800 rpm with Sound Shield - 5100 hours Located Starboard Aft Engine Room Racor 500 Fuel/Water Separator Filter Battery 12v Starting Battery with Box and Battery Switch Oil Change System Exhaust Muffler

ELECTRICAL

12V/24V/110V/240V Single 100 AMP Single Phase Shore Cord Shore Cord 80' on Glendinning Cable Master Cable Master Swivels to Service Port or Starboard Dockside Hookup One (1) Smart Y 100 AMP to Two (2) 50 AMP Plugs Battery Chargers Two (2) 24v/40 AMP Charles Marine One (1) 12v/20 AMP Charles Marine Battery Shut Off Switches Mains and Generators Main AC/DC Electrical Panels Located in the Galley Bridge AC/DC Electrical Panel Batteries Main Engines/House Total Eight (8) in Boxes Batteries Generators/Two (2) 12v Batteries in Boxes Port and Starboard Hull Sides Cable TV/Phone Hook Up

BOW THRUSTER

Electric 220v/20hp/12" Tube Twin Counter Rotating Propellers Delivers 600lbs of Thrust Controls Pilothouse and Port and Starboard Aft Deck Controls

STABILIZERS

Quadrafin 4000 Pneumatic Gyro Gale System Power Stabilizers 220v Air Compressor

TRIM TABS

Built-in Fiberglass Tabs **NOTE:** Hydraulic Rams Rebuilt 12/16

AIR CONDITIONING

Reverse Cycle One (1) 220v Raw Water Pump - Replaced 09/2016 Eight (8) Compressors/Cruise Air Digital Thermostats in All Cabins

HEAD SYSTEM

Microphore Fresh Water Heads Runs Off Ship's 220v Air Compressor All Head Hoses Replaced 10/2015 All Heads Rebuilt Over Last Two (2) Years **NOTE:** No head hose smell in boat Holding Tank 150 gal Polyethylene Y Valve for Hold Tank or Dockside Pump Out Overboard Discharge Pump 220v - 9/2014 Dockside Pump Out Deck Fitting

BROKER'S REMARKS

SHENANIGANS is Hull #39, one of Lazzara's most successful models built to date which ran from 1993 to 2001. Lazzara successfully incorporated the attributes found in most 100'+ yachts featuring five staterooms, full beam main salon with formal dining, on deck country kitchen style galley, day head, open air aft deck with casual dining, and a comfortable enclosed bridge/skylounge. All incorporated with a user friendly draft of 4'6", great cruising speeds, and a fuel efficient hull design. The 76' Grand Salon/Skylounge appreciates an excellent resale value and has stood the stand of time due to her styling, award winning layout, and affordability.

SHENANIGANS is a must see if contemplating the purchase of a great family yacht.

EXCLUSIONS

Tools, Personal Items, Fishing Gear. A detailed list will be provided at time of sale upon request.

Исключения

При продаже яхты исключаются личные вещи владельца.

Отказ от ответственности

Компания предоставляет описание судна или яхты добросовестно, но не может гарантировать точность этой информации, а также не ручается за техническое состояние. Покупатель должен проинструктировать своих агентов или оценщиков исследовать представленную информацию более подробно, по собственному желанию. Продажа судна или яхты, изменение цены или снятие с продажи будет происходить без предварительного уведомления.

ФОТОГРАФИИ

Forward Profile



Foredeck SunPad



Enclosed Bridge Helm



Enclosed Bridge Helm



Enclosed Bridge Helm



Skylounge



Skylounge



Skylounge



Skylounge



Skylounge Aft Deck



Skylounge Aft Deck



Skylounge Aft Deck Boat Deck



Tender



Tender



Aft Deck / Dining



Aft Deck / Dining



Aft Deck



Aft Deck



Aft Deck



Aft Deck Wet Bar



Full Beam Main Salon



Main Salon / Formal Dining



Main Salon / Formal Dining



Main Salon / Formal Dining



Main Salon



Main Salon



Main Salon



Main Salon



On Deck Galley Dinette



On Deck Galley Dinette



Country Kitchen Style Galley



Galley



Galley



Staircase to Helm / Skylounge



Galley



Galley



Full Beam Master Stateroom



Master Stateroom



Master Stateroom



Master Stateroom



Master Head with Jacuzzi Tub



Master Head His and Hers Sinks



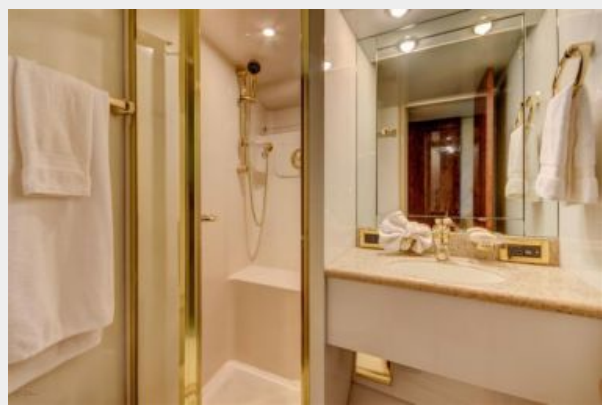
Port Guest Stateroom



Port Guest Stateroom



Port Ensuite Guest Head



Starboard Ensuite Guest Head



Starboard Guest Stateroom



Starboard Guest Stateroom



Master / Guest Staterooms Foyer



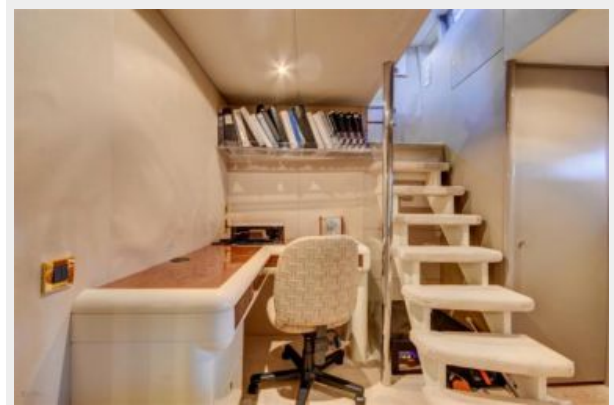
Captain's Cabin



Crew / Kids Upper / Lower Berth Cabin



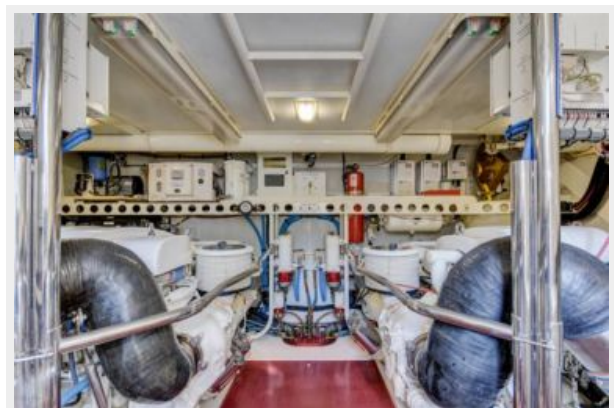
Office



Office



Full Beam Aft Engine Room



Full Beam Aft Engine Room

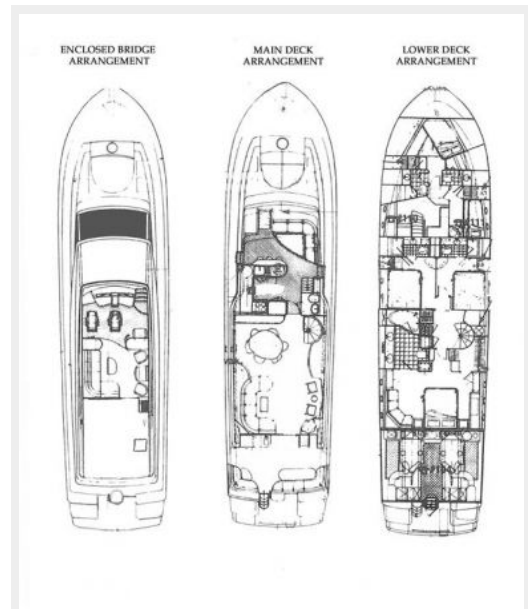


Engine Room



GA

Transom / Swim Platform



КОНТАКТЫ

Андрей Шестаков (Andrey Shestakov) – ведущий яхтенный брокер отдела продаж яхт и судов компании Shestakov Yacht Sales Inc. Официальный представитель Shestakov Yacht Sales Inc. для русскоговорящих клиентов в центральном офисе компании в Майами/Форт Лодердейл/Флорида/США.

Контактная информация

Email: andrey@shestakovyachtsales.com

Web: shestakovyachtsales.com

Телефоны

Краснодарский край: **+7(918)465-66-44**

США, Майами, Флорида: **+1(954)274-4435**

Время работы

Понедельник – Суббота: **9:00 - 21:00**
EDT

Воскресенье: **Закрито**

Адрес



Harbour Towne Marina, 850 NE 3rd St,
STE 213, Dania, FL 33004