

TRIKARY — VIKING



Builder: VIKING

Year Built: 2005

Model: Sport Fisherman

Price: PRICE ON APPLICATION

Location: United States

LOA: 61' 0" (18.59m)

Beam: 18' 6" (5.64m)

Min Draft: 5' 4" (1.63m)

Max Draft: 4' 11" (1.50m)

Our experienced yacht broker, Andrey Shestakov, will help you choose and buy a yacht that best suits your needs **Trikey — VIKING** from our catalogue. Presently, at Shestakov Yacht Sales Inc., we have a wide variety of yachts available on our sale's list. We also work in close contact with all the big yacht manufacturers from all over the world.

If you would like to buy a yacht **Trikey — VIKING** or would like help answering any questions concerning purchasing, selling or chartering a yacht, please call **+1(954)274-4435**

TABLE OF CONTENTS

TABLE OF CONTENTS	2
SPECIFICATIONS	5
Overview	5
Basic Information	5
Dimensions	5
Speed, Capacities and Weight	5
Accommodations	5
Hull and Deck Information	6
Engine Information	6
DETAILED INFORMATION	7
Boat Highlights	7
Exclusions	13
Exclusions	13
Disclaimer	13
PHOTOS	14
Salon	14
Galley	14
Master Stateroom	14
Helm	14
Salon	14
Salon	14
Dinette	15
Galley	15
AV	15
Bottle Storage	15
Salon TV	15
Salon TV Storage	15
Galley Flooring	16

Teak Entryway	16
Master Stateroom	16
Master Stateroom	16
Master Head	17
Master Head	17
Forward VIP Stateroom	17
Forward VIP Stateroom	17
VIP Head	18
Guest Head	18
Washer/Dryer	18
Helm	18
Helm Electronics	19
Helm Electronics	19
Helm Electronics	19
Helm Electronics	19
Cockpit	19
Cockpit	19
Cockpit and Mezzanine Seating	20
Cockpit and Mezzanine Seating	20
Helm Seating	20
Helm Seating	20
Helm Seating	20
Cockpit	20
Engine Room	21
Engine Room	21
Engine Room	21
Engine Room	21
Engine Room	21
Forward Engine Room	21

Watermaker	22
Engine Room	22
Engine Room	22
Engine Room	22
Engine Room	22
Engine Room	22
Profile	23
Cockpit	23
Profile	23
CONTACTS	24
Contact details	24
Telephones	24
Office hours	24
Address	24

SPECIFICATIONS

Overview

Every once in a while comes along that certain person to whom you would love to buy his boat. Well look no further. Trikary is a 2005 61 Viking that has had a total refit in the past 2 years. Trikary was sent back to the Viking factory where she received a full paint job and much , much more. Her interior was gutted and modernized by Hinkley, electronics were replaced, all soft goods and hard goods on the interior including new upper end countertops, designer carpets, etc. The list is endless and NO EXPENSE was spared. The current owner has in excess of \$2m invested in Trikary but due to a change of plans, he is down sizing. A quality Post 50 or 53 would be entertained on trade. This boat is as nice as it gets. It shows like a new boat and is offered at a fraction of her \$4.5m replacement cost.

Basic Information

Category: Sport Fisherman

Sub Category: Convertible

Model Year: 2005

Year Built: 2005

Country: United States

Dimensions

LOA: 61' 0" (18.59m)

Beam: 18' 6" (5.64m)

Min Draft: 5' 4" (1.63m)

Max Draft: 4' 11" (1.50m)

Speed, Capacities and Weight

Displacement: 82000 Pounds

Water Capacity: 315 Gallons

Holding Tank: 200 Gallons

Fuel Capacity: 1700 Gallons

Accommodations

Total Cabins: 3

Hull and Deck Information

Hull Material: Fiberglass

Engine Information

Engines: 2

Manufacturer: Caterpillar

Model: C-32

Engine Type: Inboard

Fuel Type: Diesel

DETAILED INFORMATION

Boat Highlights

Everything highlighted in red was done in the past 2 years during a major refit. TRIKARY has been tediously updated by very knowledgeable owners. She has the best of the best and shows like a new boat without the \$4.5m replacement cost. For a new boat buyer, this boat presents itself very attractively at a fraction of the cost. TRIKARY is located in Jupiter and always ready to show as her owners keep the boat meticulous.

Paint and cosmetics - Winter 2015/2016

The boat was sent to the Viking factory in New Jersey to be painted. They completely dismantled the boat including all hardware, hatches, gaskets, electronics, doors, hinges and every last nut bolt and screw. Completely removed all gel coat and repainted with Awlgrip. Blue hull, white white top and black mask with metallic. Water line was painted with same metallic

All stainless steel items sent out and repolished

Soda blasted bottom. New barrier coat, bottom paint etc

Filled and faired the joint at aft of fly bridge deck

Hand painted inside of rope locker

Electronics: all new spring 2015

2 Furuno 14" TZ touch screens

Furuno 72 mile radar

2 new transducers

New Garmin depth sounder

New electric compass with (old) spare back up.

4 new engine room cameras

2 Icom IC-M504A VHF's

2 Shakespeare antennas

3 Samsung flat screen TV's

HD7 - KVH system with 2 receiver boxes

6 Custom O/H flush mount speakers, Yamaha Stereo, Definitive Technologies sub woofer and

Blu Ray player spring 2015

Electronics new 2016

New high end Fusion radio and 6 speakers on bridge

Completely new (from rudder sensor up) Furuno auto pilot spring 2016

Replaced all 3 UPS's for TV's and stereo gear spring 2016

New remote auto pilot control with extended cable

New LED navigation lights spring 2015

New Sirius weather antenna and receiver located under "dummy dome". Never turned on.

Mechanical

New turbos Spring 2016

New Stainless risers and elbows spring 2016

New impellers spring 2016

Complete engine service including all coolers removed and flushed, new antifreeze, new zincs, valves adjusted, all fluids and filters, Racors, transmission pressures checked, etc.

New port side cable master spring 2016

New 75' power cords Spring 2015

New cutlass bearings spring 2015

Completely rebuilt rudder posts spring 2015

New block heaters spring 2015

Interior: All new at Hinckley spring 2015

All interior wood totally striped and refinished with West System High Gloss 207

New head liners through out

New wall paper through out

New Hunter Douglas "silhouette" shades

New brass over head lights w/ Zenon bulbs through out

New dimmers in Salon and staterooms

New counter tops galley and all 3 heads

New recessed 2 burner stove top

New Carpet through out

All new Hand Craft mattresses through out.

New (not recovered) sofa and dinette seating by Glastop in Pompano Beach Fall 2014

Custom lambrequins in salon

Custom (expensive) wall sconces master stateroom spring 2015

New custom head boards Master and VIP spring 2015

Exterior

New mezzanine and bridge cushions. Closed cell foam with Sunbrella material spring 2015

New Costs Clear (EZ2CY) 3 sided enclosure fall 2014

Custom touches

Extended side grab handles to wrap around front of mask

Relocated Electric cords to above the cockpit doors for ease of use. Filled and faired the doors to remove the cut outs

Carpet under helm station in work area

Flush mount 44" TV in salon that opens for 2 storage drawers

Custom "Chris Channell back splash in galley 2015 (\$14K)

Relocated fuel and Racor gauges from under helm to dash

Custom (deeper) teak medicine cabinet in Master spring 2015

Built in cabinet bar w/ glass and liquored storage in salon

Teak back boards on bridge for electronics on bridge

New Lexan electronics panel covers on bridge spring 2015

Misc.

New anchor, 50' of chain and 225' of line

New (center) Sub Zero in galley

Props redone to class 1 spring 2016

New Raritan 1700 Stainless 20 gallon water heater fall 2014

New custom gloss white tool box fall 2016

Custom storage shelves and spare parts bins fall 2016

All thermostats upgraded to the latest summer 2015

New trash compactor spring 2015

Completely new custom teak cockpit by Hinckley spring 2015

New teak and holly floors at salon entrance and in galley 2015

New bamboo floors all 3 heads 2015

3" teak risers under toilets 2015

All 3 Vacu Flush vacuum generators rebuilt fall 2016

All new "white" sanitation hoses replaced spring 2016

New stainless rod holders spring 2016

All hatch and lift shocks replaced spring 2016

Fuel and oil transfer pumps rebuilt spring 2015

Both helm chairs refitted spring 2015

New teak treads on bridge ladder spring 2015

All new house batteries summer 2015

Spare parts kits, filters, etc.

All new engine room lens covers and bulbs winter 2017

New Bomar hatches with screens and sun shades; 3 on foredeck, one on hard top spring 2015

Cockpit

Mezzanine seating configuration with custom fabric

Teak cockpit decks

Saltwater wash down

Freshwater wash down

Dockside pressure water connection

Waste oil transfer spigot

Refrigerated drink box in cockpit step

Cockpit freezer in mezzanine

Additional cockpit bait freezer in starboard mezzanine step

All cockpit refrigeration/freezers on Ranco electronic thermostats

Eskimo ice machine dumps into cockpit box

Tackle drawer storage

Transom live well

In-deck fish box

Transom door with lift gate and interior grab handle

Lewmar Windlass V4 SS

Anchor locker freshwater wash down

Bow rails

Frameless windows

Electrical:

21.5 KW Generator

12vdc/24vdc/110vac ships electrical systems

(2) Battery chargers

Ships batteries

Viking color coded and loomed wiring system

Battery on/off selector T handles

Ship's main breaker panel (salon)

TV/Phone connection

Generator new (not rebuilt) raw water pump summer 2016

New fresh water pump summer 2015

New lower catch pan summer 2015

All interior box sound barriers replaced summer 2015

Generator placed on 1/2" rubber insulator

Cooler flushed, new antifreeze and full service fall 2016

New fuel pump summer 2015

Engine Room/Mechanical Equipment

Twin CAT C-32's (1675 hp) completely up to date

Engine room cameras

Engine room and Lazzarette surfaces have all been finished out in Awlgrip

Oil changing system with cockpit waste oil extraction port

Reverso electric fuel priming pumps

Dual Racor fuel filters

Sea Star Hydraulic assisted steering system

Fresh water pump

Phase 3 battery charging system

Sea Recovery 1200gpd Aqua Whisper water maker

Eskimo ice machine Underwater lights Remote engine gauge package

Remote engine start/stop controls

CruiseAire air conditioning units

Bilge pumps

Bilge blowers

Delta T engine room ventilation system

Engine room circulation fans

Fuel shut off valves

Exclusions

Name reserved - To be removed within 30 days of closing (proof required) Grand Slam Billfish statue in salon Teak Step Boxes with Trikary Name Master Stateroom Mirror Custom Decorative Pillows Owners personal items not disclosed on listing

Exclusions

Owner's personal belongings.

Disclaimer

The Company offers the details of this vessel or yacht in good faith but cannot guarantee or warrant the accuracy of this information nor warrant the condition of the vessel. A buyer should instruct his representatives, agents, or his surveyors, to investigate such details as the buyer desires validated. This vessel or yacht is offered subject to prior sale, price change, or withdrawal without notice.

PHOTOS

Salon



Galley



Master Stateroom



Helm



Salon



Salon



Dinette



Galley



AV



Bottle Storage



Salon TV



Salon TV Storage



Teak Entryway



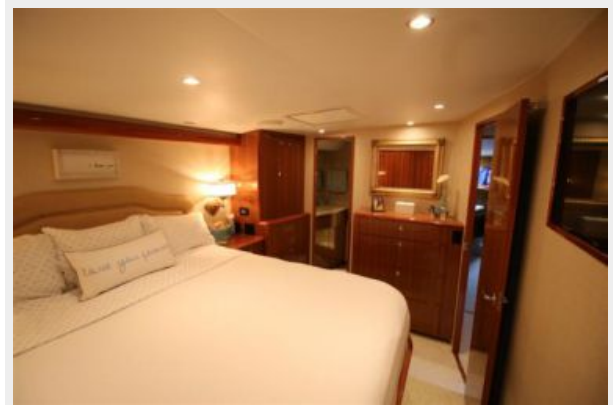
Galley Flooring



Master Stateroom



Master Stateroom



Master Head



Master Head



Forward VIP Stateroom



Forward VIP Stateroom



VIP Head



Guest Head



Washer/Dryer



Helm



Helm Electronics



Helm Electronics



Helm Electronics



Helm Electronics



Cockpit



Cockpit



Cockpit and Mezzanine Seating



Cockpit and Mezzanine Seating



Helm Seating



Helm Seating



Helm Seating



Cockpit



Engine Room



Engine Room



Engine Room



Engine Room



Engine Room



Forward Engine Room



Watermaker



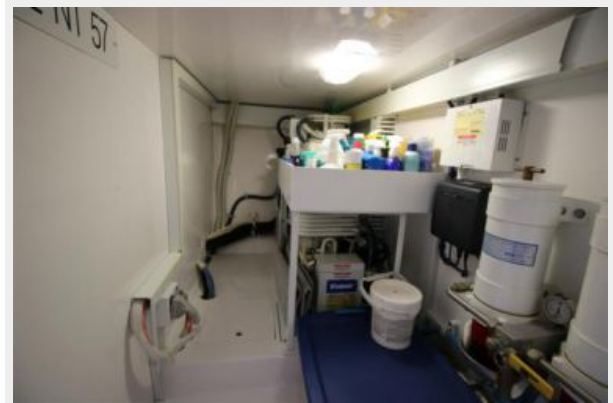
Engine Room



Engine Room



Engine Room



Engine Room



Engine Room



Cockpit



Profile



Profile



CONTACTS

Andrey Shestakov, leading yacht broker of the sales department of Shestakov Yacht Sales Inc. Shestakov Yacht Sales Inc., the official representative of the Miami/Fort Lauderdale FL headquarters.

Contact details

Email: andrey@shestakovyachtsales.com

Web: shestakovyachtsales.com/en/

Telephones

USA: +1(954)274-4435

Office hours

Monday – Saturday: **9:00 - 21:00** EDT

Sunday: **closed**

Address



Harbour Towne Marina, 850 NE 3rd St,
STE 213, Dania, FL 33004