

40FT 2011 BENETEAU 40 — BENETEAU



Builder: BENETEAU

Year Built: 2011

Model: Cruising Sailboat

Price: PRICE ON APPLICATION

Location: United States

LOA: 40' 0" (12.19m)

Beam: 12' 11" (3.94m)

Max Draft: 5' 3" (1.60m)

Our experienced yacht broker, Andrey Shestakov, will help you choose and buy a yacht that best suits your needs 40ft 2011 Beneteau 40 — BENETEAU from our catalogue. Presently, at Shestakov Yacht Sales Inc., we have a wide variety of yachts available on our sale's list. We also work in close contact with all the big yacht manufacturers from all over the world.

If you would like to buy a yacht 40ft 2011 Beneteau 40 — BENETEAU or would like help answering any questions concerning purchasing, selling or chartering a yacht, please call +1(954)274-4435

TABLE OF CONTENTS

TABLE OF CONTENTS	2
SPECIFICATIONS	4
Overview	4
Basic Information	4
Dimensions	4
Speed, Capacities and Weight	4
Accommodations	5
Hull and Deck Information	5
Engine Information	5
DETAILED INFORMATION	6
DIMENSIONS	6
ACCOMODATIONS	6
VESSEL WALK THROUGH	7
SALON and GALLEY	8
ELECTRICAL and ELECTRONICS	8
MECHANICAL	9
HULL and DECK	9
SAILS and RIGGING	10
ADDITIONAL EQUIPMENT	10
COMMENTS	11
Exclusions	11
Disclaimer	11
PHOTOS	12
Salon	12
Galley	12
Dinette	12
Salon looking Aft	12
Forward Cabin	12

Forward Cabin-2	12
Forward Head	13
Aft Cabin- Starbd	13
Aft Cabin - Portside	13
Starbd Side Aft cabin - entrance to head	13
Aft Head	14
Stern view	14
Cockpit	14
Starbd Helm	14
Starbd Helm-2	14
Port Helm+	14
Cockpit-2	15
Cockpit-3	15
Side deck	15
Side view	15
Forward	15
CONTACTS	16
Contact details	16
Telephones	16
Office hours	16
Address	16

SPECIFICATIONS

Overview

3 CABINS – 2 HEADS W/SHOWERS

AIR CONDITIONING -FULL ELECTRONICS PACKAGE – COMPLETELY EQUIPPED

LARGE OPEN SALON WITH EURO STYLE GALLEY

LARGE COCKPIT WITH DUAL STEERING STATIONS, and WALK THROUGH TRANSOM

SHALLOW DRAFT

The Beneteau 40, Cruising World's 2007 Boat of the Year, is a classic in the making! A boat that increases the standards for what one should expect from a 40' boat. It lives like a larger boat, has wonderful sailing attributes, and can easily be managed by one person. DTSID:3044572

Basic Information

Category: Cruising Sailboat

Sub Category: Cruising/Racing Sailboat

Model Year: 2011

Year Built: 2011

Country: United States

Dimensions

LOA: 40' 0" (12.19m)

LWL: 36' 0" (10.97m)

Beam: 12' 11" (3.94m)

Max Draft: 5' 3" (1.60m)

Clearance: 57' 10" (17.63m)

Speed, Capacities and Weight

Displacement: 16931 Pounds

Water Capacity: 95 Gallons

Holding Tank: 34 Gallons

Fuel Capacity: 53 Gallons

Accommodations

Total Cabins: 3

Total Berths: 3

Total Heads: 2

Hull and Deck Information

Hull Material: Fiberglass

Engine Information

Engines: 1

Manufacturer: Yanmar

Model: 3JH5E

Engine Type: Inboard

Fuel Type: Diesel

DETAILED INFORMATION

DIMENSIONS

LOA40 ft12.15 meters

LWL36 ft 10.97 m

Beam 12 ft 11 in 3.91 m

Draft 5 ft 3 in 1.6 m

Height 57 ft 10 in 17.65 m

Displacement 16,931 lbs 10,585 kilo

Tankage- Fuel 53 gal 200 ltr (Bonar plastic tank)

Water..... 95 gal (in 2 tanks) ... 1x 160 ltr, 1x 95 ltr (Bonar Plastic tank)

Holding 34 gal (in 2 tanks) .. 13 gal //50 ltr forward, 21 gal..80 ltr Aft

Diesel Engine – Yanmar 3JH5E 40 HP

ACCOMODATIONS

3 cabins 2 Heads

Main Cabin – Forward:

Forward V-Berth is accessed by privacy door and also large overhead hatch (for emergency egress). Berth has storage underneath. Additional storage provided by cabinetry and shelving –

- Central double bed with Marine mattress • Hanging locker - Glove box - Cubby hole locker - Storage drawer - Locker storage • 2 Opening hatches with blind / Mosquito net • 2 Hull portholes with curtain

Head - There is a private forward head -to Starbd – fitted with Jabsco manual toilet, shower and wash basin w/storage cabinet. Holding tank behind cabinetry

- Access through forward cabin • Washroom molded in one piece to be watertight • Manual marine toilet • Washbasin - shower mixer tap hot / cold water • 1 Mirror • Toilet accessories: Glass holder - towel rail - Rubbish bin - Paper dispenser • Cupboard and cubby hole • 1 Opening deck hatch with shutter / Mosquito net

(2) Guest cabins – Aft

Aft berth (starboard). Located aft to the starboard side, this space accommodates a bunk (with tank stored underneath), fan, and adequate bulkhead, moreover, battery and battery charger located at the forward end of the bunk.

Aft berth (port). Located aft to the port side; this space accommodates a bunk (with tank stored underneath), fan and adequate cabinetry. It also allows access to engine compartment from the starboard side bulkhead.

2 Symmetrical cabins each one consisting of: • Double bed - Marine mattress • Cupboard - Hanging locker - Closed cubbyholes • 1 Hull portholes with curtain • 1 Porthole(s) opening onto coaming with curtain • 1 Cockpit porthole(s) with curtain • 1 Opening deck hatch with shutter / Mosquito net

Aft Head. Located aft of the dining area to the starboard and accessed via a doorway from the salon area and/or the starboard quarter berth. This space accommodates a vanity with wash basin, Jabsco manual toilet, enclosed shower and cabinetry for storage.

- Access through saloon and the starboard aft cabin • Washroom molded in one piece to be watertight • Separate shower - 1 shower mixer tap hot / cold water • 1 Manual marine toilet • 1 Rigid sewage water tank 80L • Wooden handrail(s) - 1 Mixing tap hot water / cold water • 2 Mirrors • Toilet accessories: Glass holder - towel rail - Rubbish bin - Paper dispenser • Cupboard and closed cubbyholes • 1 Porthole opening onto coaming in side window

Air Conditioning – with dockside power (2 zones)

Interior Cherry finish with Teak & Holly sole

Pressurized H&C Fresh water

Water Heating System: 6 gallon heated by shore power and engine exchanger

VESSEL WALK THROUGH

This vessel is the Euro Style that is becoming very popular in the US because of the larger living space it affords below, and better use of the Galley space

Upon entering the Main Salon – There is Head and shower immediately to Starbd – and two aft guest cabins- One to Starbd, and one Stared guest cabin also has a private door to the aft head,

making this an en-suite cabin.

Forward of the Head, on Starbd side is the large Dinette - this easily seats 8 people with the convenient ottoman inboard of the table. This also becomes a very comfortable lounging area with a nice extended lounge seat to the aft part of the seating area – Two people can comfortably stretch their feet out and read or use this area for any other purpose – this Dinette can also be lowered for 2 additional berths

Moving forward along the Port side is forward facing Nav station, and then the linear Galley – this layout is very convenient as several people can use the Galley features at the same time, as opposed to the older style U-shaped galley which is very restrictive. This style Galley also affords loads of usable counter space for cooking or entertaining.

Forward of the Salon is the Master en-suite cabin with queen berth and private head and shower.

SALON and GALLEY

Salon: Large Salon with linear Galley to Port, and U-shaped dinette to Starbd, also ottoman seat to center of boat for additional seating

Fans

Storage shelving and cabinets

U-Shaped settee with convertible dinette table

Galley – Modern linear galley along Port side of Salon

Refrigerator – Vitrifrigo topo load 12v fitted into galley counter top

Stove – Force-10 2 burner propane cooktop and oven

2 propane tanks in cockpit locker

Storage cabinets

Double SS sink

ELECTRICAL and ELECTRONICS

Electrical:

DC System – 12 v DC consisting of (1) lifeline GPL engine start battery, and (2) Lifeline GPL 4DL house batteries -w/ 3 selector switch system, Breaker panel

Charger/inverter Xantrex True Chgarge-2 40 amp

AC System - 110v shore power connection, w/50 ft cord, Breaker panel

Voltage and amp gauges in main electric panel for AC and DC

(11) AC outlets throughout the vessel

Spreader and cockpit lights

Electronics:

Chart plotter – Raymarine C90

Autopilot – Raymarine ST7000

Wind/depth/speed - (2) Raymarine ST70

Compass – (2) Plastimo magnetic units

VHF – ICOM ICM412 at Nav station

Flat screen TV mounted on forward bulkhead

Stereo – Sony CDX Marine player – MP3, w/speakers in salon and cockpit

MECHANICAL

Diesel Engine – Yanmar 3JH5E 40 HP

Single lever control

Parker 500 MA fuel filter

Dripless packing gland

3 blade propeller

Windlass - Quick High performance 12 v w/ remote control, and manual operation

Air conditioning – one unitized self-contained system – Crusair 16,000 BTU

Water heater – 6 gal, 110v

Separate sump tanks and pumps for showers

Bilge pumps – 1 manual (in cockpit) 1 electric

HULL and DECK

HULL: Solid Glass Reinforced Plastic (GRP) It is a one piece molding with internal stiffening provided by transverse frames bulkheads, and longitudinal stringers

Deck _ Molded GRP with non-skid surface – teak insets in cockpit

Hot/cold shower at transom

Transom – Sugar Scoop design with integrated swim platform and ladder

Keel – Modified fin keel with bulb

SS bow pulpit – SS stern pushpit

Stanchions are welded SS rail with safety wire around full perimeter of vessel

(6) mooring cleats

Grab rails SS on cabin house and foredeck

GROUND TACKLE:

Anchor platform - SS platform with anchor roller

Bruce type Lewmar 20-44UK, w/ chain on Bow roller

COCKPIT- Cockpit is fitted with dual helm station/pedestal steering, and opening table

Bimini – SS tubular supports and Blue canvas

Spray hood/dodger – canvas w/ Isenglass roll up windows

SAILS and RIGGING

Main – Quantum sail fully battened w/lazy jacks

Genoa – Quantum on Profurl roller furler

WINCHES:

2 x Harken #40 ST 2 speed

2 x Harken # 46 ST 2 speed

ADDITIONAL EQUIPMENT

Emergency tiller

Jim Buoy Horseshoe life ring

Life jackets

Fenders

Lines

Kuna Bar B Que grill

Fire extinguishers

Flare kit

Life raft – Transocean, Type 1 Group A (no service date available)

COMMENTS

Similar to her sister ships the Beneteau 40 was designed by naval architects Berret/Racoupeau with the stylizing collaboration of Nauta Design for the interior. In the cockpit, the Beneteau 40 is appointed with two steering stations with navigation instruments nearby for ease of handling. The spacious and luminous interior of the Beneteau 40 is highlighted with rich, light colored select Cherry hardwood and stainless steel to create an essence of warmth and comfort

Exclusions

Owner's personal belongings.

Disclaimer

The Company offers the details of this vessel or yacht in good faith but cannot guarantee or warrant the accuracy of this information nor warrant the condition of the vessel. A buyer should instruct his representatives, agents, or his surveyors, to investigate such details as the buyer desires validated. This vessel or yacht is offered subject to prior sale, price change, or withdrawal without notice.

PHOTOS

Salon



Galley



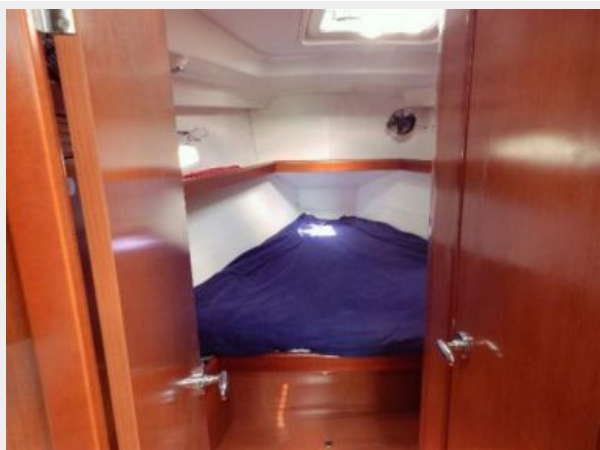
Dinette



Salon looking Aft



Forward Cabin



Forward Cabin-2



Forward Head



Aft Cabin- Starbd



Aft Cabin - Portside



Starbd Side Aft cabin - entrance to head



Aft Head



Stern view



Cockpit



Starbd Helm



Starbd Helm-2



Port Helm+



Cockpit-2



Cockpit-3



Side deck



Side view



Forward



CONTACTS

Andrey Shestakov, leading yacht broker of the sales department of Shestakov Yacht Sales Inc. Shestakov Yacht Sales Inc., the official representative of the Miami/Fort Lauderdale FL headquarters.

Contact details

Email: andrey@shestakovyachtsales.com

Web: shestakovyachtsales.com/en/

Telephones

USA: +1(954)274-4435

Office hours

Monday – Saturday: **9:00 - 21:00** EDT

Sunday: **closed**

Address



Harbour Towne Marina, 850 NE 3rd St,
STE 213, Dania, FL 33004