

## 40FT 2011 BENETEAU 40 — BENETEAU



**Судостроитель:** BENETEAU

**Год постройки:** 2011

**Модель:** Крейсерская яхта

**Цена:** ЦЕНА ЯХТЫ ПО ЗАПРОСУ

**Местонахождение:** United States

**Длина общая:** 40' 0" (12.19m)

**Ширина:** 12' 11" (3.94m)

**Макс. осадка:** 5' 3" (1.60m)

Купить 40ft 2011 Beneteau 40 — BENETEAU а также выбрать подходящую вам яхту из нашего каталога яхт вам поможет опытный яхтенный брокер Андрей Шестаков. На сегодняшний день компания Shestakov Yacht Sales Inc. имеет большое количество яхт в собственном списке продаж, а также тесно сотрудничает со всеми крупными яхтенными производителями по всему миру.

Для того чтобы купить яхту 40ft 2011 Beneteau 40 — BENETEAU а также проконсультироваться по любому вопросу связанному с покупкой, продажей, чартером яхт позвоните по телефону **+7(918)465-66-44**.

# ОГЛАВЛЕНИЕ

ОГЛАВЛЕНИЕ	2
ХАРАКТЕРИСТИКИ	4
Обзор	4
Основная информация	4
Размеры	4
Скорость, вместимость и масса	4
Размещение	5
Корпус и палуба	5
Информация о двигателе	5
ПОДРОБНОЕ ОПИСАНИЕ	6
DIMENSIONS	6
ACCOMODATIONS	6
VESSEL WALK THROUGH	7
SALON and GALLEY	8
ELECTRICAL and ELECTRONICS	8
MECHANICAL	9
HULL and DECK	9
SAILS and RIGGING	10
ADDITIONAL EQUIPMENT	10
COMMENTS	11
Исключения	11
Отказ от ответственности	11
ФОТОГРАФИИ	12
Salon	12
Galley	12
Dinette	12
Salon looking Aft	12
Forward Cabin	12

Forward Cabin-2	12
Forward Head	13
Aft Cabin- Starbd	13
Aft Cabin - Portside	13
Starbd Side Aft cabin - entrance to head	13
Aft Head	14
Stern view	14
Cockpit	14
Starbd Helm	14
Starbd Helm-2	14
Port Helm+	14
Cockpit-2	15
Cockpit-3	15
Side deck	15
Side view	15
Forward	15
<b>КОНТАКТЫ</b>	<b>16</b>
Контактная информация	16
Телефоны	16
Время работы	16
Адрес	16

# ХАРАКТЕРИСТИКИ

## Обзор

3 CABINS – 2 HEADS W/SHOWERS

AIR CONDITIONING -FULL ELECTRONICS PACKAGE – COMPLETELY EQUIPPED

LARGE OPEN SALON WITH EURO STYLE GALLEY

LARGE COCKPIT WITH DUAL STEERING STATIONS, and WALK THROUGH TRANSOM

SHALLOW DRAFT

The Beneteau 40, Cruising World's 2007 Boat of the Year, is a classic in the making! A boat that increases the standards for what one should expect from a 40' boat. It lives like a larger boat, has wonderful sailing attributes, and can easily be managed by one person. DTSID:3044572

## Основная информация

**Тип судна:** Крейсерская яхта

**Подкатегория:** Cruising/Racing Sailboat

**Модельный год:** 2011

**Год постройки:** 2011

**Страна:** United States

## Размеры

**Длина общая:** 40' 0" (12.19m)

**Длина по ватерлинии:** 36' 0" (10.97m)

**Ширина:** 12' 11" (3.94m)

**Макс. осадка:** 5' 3" (1.60m)

**Трапы:** 57' 10" (17.63m)

## Скорость, вместимость и масса

**Водоизмещение:** 16931 Pounds

**Вместимость воды:** 95 Gallons

**Вместимость сточного бака:** 34 Gallons **Объем топливного бака:** 53 Gallons

## Размещение

---

**Всего кают:** 3

**Всего коек:** 3

**Всего ком. состава:** 2

## Корпус и палуба

---

**Материал корпуса:** Fiberglass

## Информация о двигателе

---

**Двигатели:** 1

**Производитель:** Yanmar

**Модель:** 3JH5E

**Тип двигателя:** Inboard

**Тип топлива:** Diesel

# ПОДРОБНОЕ ОПИСАНИЕ

## DIMENSIONS

LOA .....40 ft .....12.15 meters

LWL .....36 ft ..... 10.97 m

Beam ..... 12 ft 11 in ..... 3.91 m

Draft ..... 5 ft 3 in ..... 1.6 m

Height ..... 57 ft 10 in ..... 17.65 m

Displacement ..... 16,931 lbs ..... 10,585 kilo

Tankage- Fuel ..... 53 gal ..... 200 ltr ( Bonar plastic tank )

Water..... 95 gal ( in 2 tanks) ... 1x 160 ltr, 1x 95 ltr ( Bonar Plastic tank)

Holding ..... 34 gal ( in 2 tanks) .. 13 gal //50 ltr forward, 21 gal..80 ltr Aft

Diesel Engine – Yanmar 3JH5E 40 HP

## ACCOMODATIONS

3 cabins 2 Heads

Main Cabin – Forward:

Forward V-Berth is accessed by privacy door and also large overhead hatch ( for emergency egress). Berth has storage underneath. Additional storage provided by cabinetry and shelving –

- Central double bed with Marine mattress • Hanging locker - Glove box - Cubby hole locker - Storage drawer - Locker storage • 2 Opening hatches with blind / Mosquito net • 2 Hull portholes with curtain

Head - There is a private forward head -to Starbd – fitted with Jabsco manual toilet, shower and wash basin w/storage cabinet. Holding tank behind cabinetry

- Access through forward cabin • Washroom molded in one piece to be watertight • Manual marine toilet • Washbasin - shower mixer tap hot / cold water • 1 Mirror • Toilet accessories: Glass holder - towel rail - Rubbish bin - Paper dispenser • Cupboard and cubby hole • 1 Opening deck hatch with shutter / Mosquito net

(2) Guest cabins – Aft

**Aft berth (starboard).** Located aft to the starboard side, this space accommodates a bunk (with tank stored underneath), fan, and adequate bulkhead, moreover, battery and battery charger located at the forward end of the bunk.

**Aft berth (port).** Located aft to the port side; this space accommodates a bunk (with tank stored underneath), fan and adequate cabinetry. It also allows access to engine compartment from the starboard side bulkhead.

2 Symmetrical cabins each one consisting of: • Double bed - Marine mattress • Cupboard - Hanging locker - Closed cubbyholes • 1 Hull portholes with curtain • 1 Porthole(s) opening onto coaming with curtain • 1 Cockpit porthole(s) with curtain • 1 Opening deck hatch with shutter / Mosquito net

**Aft Head.** Located aft of the dining area to the starboard and accessed via a doorway from the salon area and/or the starboard quarter berth. This space accommodates a vanity with wash basin, Jabsco manual toilet, enclosed shower and cabinetry for storage.

- Access through saloon and the starboard aft cabin • Washroom molded in one piece to be watertight • Separate shower - 1 shower mixer tap hot / cold water • 1 Manual marine toilet • 1 Rigid sewage water tank 80L • Wooden handrail(s) - 1 Mixing tap hot water / cold water • 2 Mirrors • Toilet accessories: Glass holder - towel rail - Rubbish bin - Paper dispenser • Cupboard and closed cubbyholes • 1 Porthole opening onto coaming in side window

**Air Conditioning – with dockside power ( 2 zones)**

**Interior Cherry finish with Teak & Holly sole**

**Pressurized H&C Fresh water**

Water Heating System: 6 gallon heated by shore power and engine exchanger

## VESSEL WALK THROUGH

This vessel is the Euro Style that is becoming very popular in the US because of the larger living space it affords below, and better use of the Galley space

Upon entering the Main Salon – There is Head and shower immediately to Starbd – and two aft guest cabins- One to Starbd, and one Stared guest cabin also has a private door to the aft head,

making this an en-suite cabin.

Forward of the Head, on Starbd side is the large Dinette - this easily seats 8 people with the convenient ottoman inboard of the table. This also becomes a very comfortable lounging area with a nice extended lounge seat to the aft part of the seating area – Two people can comfortably stretch their feet out and read or use this area for any other purpose – this Dinette can also be lowered for 2 additional berths

Moving forward along the Port side is forward facing Nav station, and then the linear Galley – this layout is very convenient as several people can use the Galley features at the same time, as opposed to the older style U-shaped galley which is very restrictive. This style Galley also affords loads of usable counter space for cooking or entertaining.

Forward of the Salon is the Master en-suite cabin with queen berth and private head and shower.

---

## SALON and GALLEY

---

**Salon:** Large Salon with linear Galley to Port, and U-shaped dinette to Starbd, also ottoman seat to center of boat for additional seating

Fans

Storage shelving and cabinets

U-Shaped settee with convertible dinette table

**Galley** – Modern linear galley along Port side of Salon

Refrigerator – Vitrifrigo topo load 12v fitted into galley counter top

Stove – Force-10 2 burner propane cooktop and oven

2 propane tanks in cockpit locker

Storage cabinets

Double SS sink

---

## ELECTRICAL and ELECTRONICS

---

**Electrical:**

**DC System** – 12 v DC consisting of (1) lifeline GPL engine start battery, and (2) Lifeline GPL 4DL house batteries -w/ 3 selector switch system, Breaker panel

Charger/inverter Xantrex True Chrgage-2 40 amp



**AC System** - 110v shore power connection, w/50 ft cord, Breaker panel

Voltage and amp gauges in main electric panel for AC and DC

(11) AC outlets throughout the vessel

Spreader and cockpit lights

**Electronics:**

Chart plotter – Raymarine C90

Autopilot – Raymarine ST7000

Wind/depth/speed - (2) Raymarine ST70

Compass – (2) Plastimo magnetic units

VHF – ICOM ICM412 at Nav station

Flat screen TV mounted on forward bulkhead

Stereo – Sony CDX Marine player – MP3, w/speakers in salon and cockpit

---

## **MECHANICAL**

---

Diesel Engine – Yanmar 3JH5E 40 HP

Single lever control

Parker 500 MA fuel filter

Dripless packing gland

3 blade propeller

Windlass - Quick High performance 12 v w/ remote control, and manual operation

Air conditioning – one unitized self-contained system – Crusair 16,000 BTU

Water heater – 6 gal, 110v

Separate sump tanks and pumps for showers

Bilge pumps – 1 manual ( in cockpit) 1 electric

---

## **HULL and DECK**

---

**HULL:** Solid Glass Reinforced Plastic (GRP) It is a one piece molding with internal stiffening provided by transverse frames bulkheads, and longitudinal stringers

Deck \_ Molded GRP with non-skid surface – teak insets in cockpit

Hot/cold shower at transom

Transom – Sugar Scoop design with integrated swim platform and ladder

Keel – Modified fin keel with bulb

SS bow pulpit – SS stern pushpit

Stanchions are welded SS rail with safety wire around full perimeter of vessel

(6) mooring cleats

Grab rails SS on cabin house and foredeck

**GROUND TACKLE:**

Anchor platform - SS platform with anchor roller

Bruce type Lewmar 20-44UK, w/ chain on Bow roller

**COCKPIT-** Cockpit is fitted with dual helm station/pedestal steering, and opening table

Bimini – SS tubular supports and Blue canvas

Spray hood/dodger – canvas w/ Isenglass roll up windows

## **SAILS and RIGGING**

---

Main – Quantum sail fully battened w/lazy jacks

Genoa – Quantum on Profurl roller furler

**WINCHES:**

2 x Harken #40 ST 2 speed

2 x Harken # 46 ST 2 speed

## **ADDITIONAL EQUIPMENT**

---

Emergency tiller

Jim Buoy Horseshoe life ring

Life jackets

Fenders

Lines

Kuna Bar B Que grill

Fire extinguishers

Flare kit

Life raft – Transocean, Type 1 Group A ( no service date available)

---

## COMMENTS

---

Similar to her sister ships the Beneteau 40 was designed by naval architects Berret/Racoupeau with the stylizing collaboration of Nauta Design for the interior. In the cockpit, the Beneteau 40 is appointed with two steering stations with navigation instruments nearby for ease of handling. The spacious and luminous interior of the Beneteau 40 is highlighted with rich, light colored select Cherry hardwood and stainless steel to create an essence of warmth and comfort

---

## Исключения

---

При продаже яхты исключаются личные вещи владельца.

---

## Отказ от ответственности

---

Компания предоставляет описание судна или яхты добросовестно, но не может гарантировать точность этой информации, а также не ручается за техническое состояние. Покупатель должен проинструктировать своих агентов или оценщиков исследовать представленную информацию более подробно, по собственному желанию. Продажа судна или яхты, изменение цены или снятие с продажи будет происходить без предварительного уведомления.

# ФОТОГРАФИИ

**Salon**



**Galley**



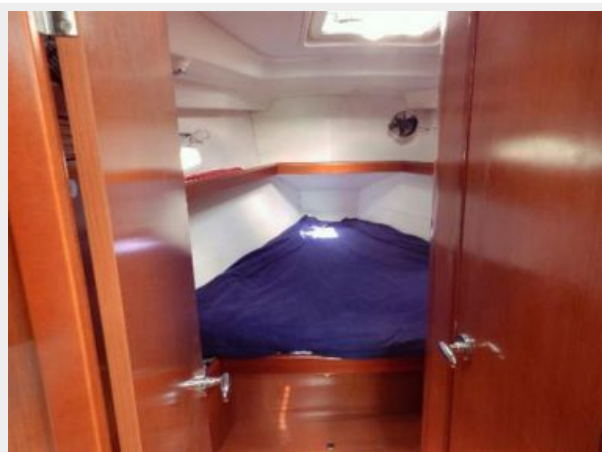
**Dinette**



**Salon looking Aft**



**Forward Cabin**



**Forward Cabin-2**



**Forward Head**



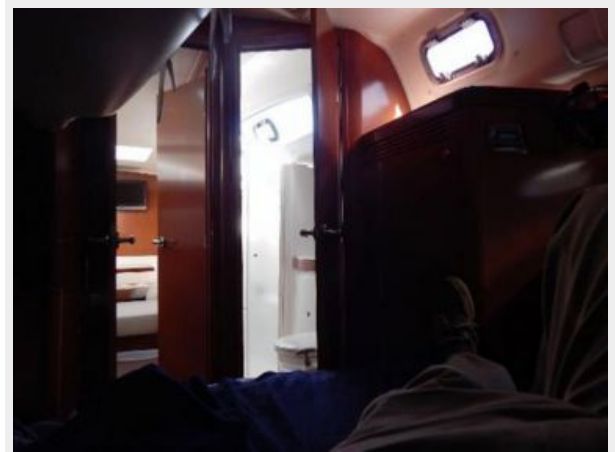
**Aft Cabin- Starbd**



**Aft Cabin - Portside**



**Starbd Side Aft cabin - entrance to head**



**Aft Head**



**Stern view**



**Cockpit**



**Starbd Helm**



**Starbd Helm-2**



**Port Helm+**



**Сокпит-2**



**Сокпит-3**



**Side deck**



**Side view**



**Forward**



# КОНТАКТЫ

---

Андрей Шестаков (Andrey Shestakov) – ведущий яхтенный брокер отдела продаж яхт и судов компании Shestakov Yacht Sales Inc. Официальный представитель Shestakov Yacht Sales Inc. для русскоговорящих клиентов в центральном офисе компании в Майами/Форт Лодердейл/Флорида/США.

## Контактная информация

---

Email: [andrey@shestakovyachtsales.com](mailto:andrey@shestakovyachtsales.com)

Web: [shestakovyachtsales.com](http://shestakovyachtsales.com)

## Телефоны

---

Краснодарский край: **+7(918)465-66-44**

США, Майами, Флорида: **+1(954)274-4435**

## Время работы

---

Понедельник – Суббота: **9:00 - 21:00**  
EDT

Воскресенье: **Закрето**

## Адрес

---



Harbour Towne Marina, 850 NE 3rd St,  
STE 213, Dania, FL 33004