

## MISS HEATHER — HATTERAS



**Судостроитель:** HATTERAS

**Год постройки:** 1999

**Модель:** Моторная яхта

**Цена:** **ЦЕНА ЯХТЫ ПО ЗАПРОСУ**

**Местонахождение:** United States

**Длина общая:** 74' 0" (22.56m)

**Ширина:** 18' 0" (5.49m)

**Мин. осадка:** 6' 0" (1.83m)

**Крейс. скорость:** 19 Kts. (22 MPH)

**Макс. скорость:** 25 Kts. (29 MPH)

Купить **Miss Heather — HATTERAS** а также выбрать подходящую вам яхту из нашего каталога яхт вам поможет опытный яхтенный брокер Андрей Шестаков. На сегодняшний день компания **Shestakov Yacht Sales Inc.** имеет большое количество яхт в собственном списке продаж, а также тесно сотрудничает со всеми крупными яхтенными производителями по всему миру.

Для того чтобы купить яхту **Miss Heather — HATTERAS** а также проконсультироваться по любому вопросу связанному с покупкой, продажей, чартером яхт позвоните по телефону **+7(918)465-66-44**.

# ОГЛАВЛЕНИЕ

ОГЛАВЛЕНИЕ	2
ХАРАКТЕРИСТИКИ	7
Обзор	7
Основная информация	7
Размеры	7
Скорость, вместимость и масса	8
Размещение	8
Корпус и палуба	8
Информация о двигателе	8
ПОДРОБНОЕ ОПИСАНИЕ	9
Walkthrough	9
Salon	9
Galley	9
Companionway	10
Master Stateroom	10
VIP Stateroom	10
Guest Stateroom	11
Crew Qtr / Guest Stateroom	11
Bridge Deck	12
Cockpit (Aft Deck)	14
Helm Station	14
Deck area and Hull	15
Electrical System	16
Mechanical	17
Engine Room	18
Updates	19
Tender	19
Exclusions	19

Исключения	19
Отказ от ответственности	19
<b>ФОТОГРАФИИ</b>	<b>21</b>
Port Profile	21
Bow	21
Bow	21
Bow	21
Bow	21
Bow	21
Bow	21
Passageway	22
Bow	22
Stbd Passageway	22
Bow	22
Bow	23
Bow	23
Bow	23
Cockpit	24
Cockpit	24
Cockpit	24
Cockpit	24
Cockpit	25
Aft Deck	25
Aft Deck	25
Aft Deck	25
Aft Deck	25
Aft Deck	25
Flybridge	26
Flybridge	26
Flybridge	26

---

Flybridge	26
Flybridge	26
Flybridge	26
Flybridge	27
Flybridge	27
Flybridge	27
Flybridge	27
Flybridge	27
Flybridge	27
Flybridge	28
Flybridge	28
Flybridge	28
Flybridge	28
Pilothouse	28
Pilothouse	28
Pilothouse	29
Pilothouse	29
Salon	29
Salon	29
Salon	29
Salon	29
Salon	30
Salon	30
Salon	30
Dinette	30
Dinette	31
Galley	31
Galley	31
Galley	31

---

---

Galley	32
Galley	32
Dining	32
Dining	32
Laundry	33
Master Stateroom	33
Master Stateroom	33
Master Stateroom	33
Master Stateroom	33
Master Stateroom	33
Master Head	34
Master Head	34
Master Head	34
Master Head	34
VIP Stateroom	35
VIP Stateroom	35
VIP Stateroom	35
VIP Stateroom	35
VIP Head	35
VIP Head	35
Forward Stateroom	36
Forward Stateroom	36
Forward Head	36
Forward Stateroom	36
Guest Stateroom	37
Guest Stateroom	37
Guest Head	37
Guest Head	37
Generator Room	38

---

---

Generator Room	38
Generator Room	38
Engine Room	38
Engine Room	38
Engine Room	38
Engine Room	39
Engine Room	39
Starboard Profile	39
Starboard Profile	39
Stern	39
Stern	39
Stern	40
Stern	40
Stern	40
Stern	40
КОНТАКТЫ	41
Контактная информация	41
Телефоны	41
Время работы	41
Адрес	41

---

# ХАРАКТЕРИСТИКИ

---

## Обзор

---

Another Price Reduction December 2017!

'Miss Heather' is a 74' Hatteras Cockpit Motor Yacht that has been continually updated and simplified for the owner operator to enjoy. She has been well cared for and is ready for her next owner to enjoy her in the Bahamas or wherever they choose to venture.

Complete 3000 hr Caterpillar engine service (2/18) Raw water pumps replaced May 2017

Helm Station reupholstered April 2017

Bottom work completed June 2017

## Основная информация

---

**Тип судна:** Моторная яхта

**Подкатегория:** Кубрик

**Модельный год:** 2000

**Год постройки:** 1999

**Страна:** United States

**Открытая палуба мостика:** Да

**Кубрик:** Да

## Размеры

---

**Длина общая:** 74' 0" (22.56m)

**Ширина:** 18' 0" (5.49m)

**Мин. осадка:** 6' 0" (1.83m)

**Трапы:** 23' 9" (7.24m)

## Скорость, вместимость и масса

---

**Крейс. скорость:** 19 Kts. (22 MPH)

**Крейсерская скорость поворота:** 1800 Kts.

**Макс. скорость:** 25 Kts. (29 MPH)

**Макс. скорость поворота:** 2300 Kts.

**Водоизмещение:** 106000 Pounds

**Вместимость воды:** 345 Gallons

**Вместимость сточного бака:** 215 Gallons **Объем топливного бака:** 1561 Gallons

## Размещение

---

**Всего кают:** 4

**Всего ком. состава:** 5

## Корпус и палуба

---

**Материал корпуса:** Fiberglass

## Информация о двигателе

---

**Двигатели:** 2

**Производитель:** Caterpillar

**Модель:** 3412C

**Тип двигателя:** Inboard

**Тип топлива:** Diesel



---

# ПОДРОБНОЕ ОПИСАНИЕ

---

## Walkthrough

---

'Miss Heather' sleeps 8 in 4 staterooms. The master stateroom suite with his and her bath arrangement is all the way aft and is separated from the other staterooms with a private staircase from the salon. Forward of the master stateroom is the full beam engine room with entrances from the aft lower foyer or from the midship VIP stateroom. The midship VIP with private bath is also accessed from the lower forward companionway. Moving forward to port is the crew quarters and fourth stateroom with private head and shower. The second VIP stateroom is all the way forward with queen centerline berth and private access to fifth bath/day head. Adjacent in the companionway is the stacked washer/dryer in concealed cabinetry.

## Salon

---

Salon is aft of the open galley. Features include a custom entertainment and liquor cabinet with a 42" Toshiba TV that retracts into the cabinet and also holds Yamaha RX496 receiver and Direct TV receiver, DVD player, and CD player. To port is a custom L-shaped sofa (reupholstered in 2014) with storage underneath and a padded coffee table. Forward area of the salon is a custom maple table with 4 chairs.

Additional features:

Custom occasional chair

Staircase to master stateroom and engine room

Maple woodwork throughout

Fixed frameless windows w/tinted glass

3-panel stainless sliding salon door to aft deck

Intellian extended range satellite TV stabilized antenna system

## Galley

---

The galley opens to the salon so everyone is included in the conversation.

Features include:

Granite counters

Updated stainless appliances

Wine cooler

4 person settee to stbd

Whirlpool Refrig/Freezer/Icemaker

Whirlpool 4 burner glass cooktop

Whirlpool stainless steel Accubake oven

Whirlpool stainless steel microwave oven

Single lever faucet (new 2015)

## **Companionway**

---

Stacked Washer/Dryer

## **Master Stateroom**

---

King size bed with new mattress and bedding 2014

32" Toshiba TV

Drawer storage underneath bed

Vanity make-up counter

Walk in cedar lined closet

Ensuite head has new fixtures with his/her bath arrangement and large Jacuzzi tub

## **VIP Stateroom**

---

VIP Stateroom is midship with new mattress and bedding (2014) on queen walk around bed

Private bath with new fixtures and large vanity

New Amtico flooring (2015)

22" Samsung TV

Phillips DVD Player

(2) cedar lined closets and cedar lined storage under bunk

---

## Guest Stateroom

---

2nd VIP Stateroom is all the way forward with queen walk around bed and private access to bath

New mattress and bedding (2014)

New fixtures and new Amtico flooring in bathroom

13" TV

Cedar lined closet

---

## Crew Qtr / Guest Stateroom

---

The crew quarters/4th stateroom features over/under berths

Private head with stall shower

Cedar lined closet

New bathroom fixtures

New bathroom Amtico flooring to match

## **Bridge Deck**

---

Garmin 5212 chart plotter

Icom 504 VHF radio

Icom Commander III VHF remote handset

Marine Engine control bowthruster

Side Power stern thruster

Raymarine Windspeed Indicator

Robertson AP22 Autopilot

ACR Spotlite Controls

2 Helm seats

Aft deck cameras

(4) camera video monitoring on the Raymarine E120 video

Engine room cameras

Radar Arch

Full Bimini Top

Full Staircase to Flybridge

Hatteras wrap-around bar unit with 3 stools, Corian countertop, sink, and refrigerator

Full wrap around U-shaped seating with new cushions 2014

Marquipt Davit 1500

Covers for Helm station, barstools, helm seats, & wraparound seating

(1) Raymarine E-120 plotter/radar

Naiad Stabilizer Controls

Hatteras Systems Station Monitor

Ritchie 6" compass

---

## Cockpit (Aft Deck)

---

The covered fan tail has a clear cube icemaker (new in 2014), chest freezer (new in 2014), sink/cabinet and teak table with 4 chairs.

---

## Helm Station

---

Wireless yacht controller, controls bow thruster, stern thruster and transmissions from anywhere on the vessel

Helm Station reupholstered April 2017 Datamarine MultiLink Depth/Speed/Temp

Northstar 951X GPS

Furuno RadAR

Cockpit (Aft deck)

(4) camera video monitoring on the Raymarine E120 video

Naiad Stabilizer Controls

Marine Engine control bow and Side Power stern thruster controls

Fuel Level Gauges

ACR spotlight controls

Windshield wipers

Weems & Plath Clock & Barometer

AM/FM CD Player

Ritchie 6" compass

Garmin 5212 touch screen network with Garmin premium charts, XM weather, depth and transmitting "AIS" upper and lower helm stations

Garmin 4212 chart plotter

Icom 604 VHF with command mic, upper and lower helm

Simrad AP20 Autopilot

Hatteras Systems Station Monitor

Furuno radar with 4 foot open array

Direct TV receivers

## **Deck area and Hull**

---

As with the other areas of this vessel, the deck area features many upgrades and additions. A Fortress FX 125 anchor was added. A Fortress FX 55 anchor was added on deck with chain/rope with separate hawse pipe. Fuel fill vent whistles were added along with fuel vent overflow eliminators. A foredeck dunnage was added for storage. Two aft 50 amp cables were added, one with a cable master system. LED blue deck lights were added. Four additional mooring cleats were added on deck. An aft deck awning and all exterior canvas, have been replaced as of November 2014. Cockpit boarding steps were added. Steps to the davit and toy storage area of the flybridge have been added. New 300 foot chain rode on the FX 125 Fortress has been added. Maxwell chain/rope windlass with controls on deck and at helms were added. Deck level pumpouts were added. Underwater lights were added as well.

Anchor w/ anchor line and hawse pipe

Maxwell 3500 Electric Windlass rebuilt 2015

Fiberglass bow pulpit w/stainless anchor chute

Molded-in integral fiberglass swim platform with stainless steel boarding ladder

Freshwater wash down on bow, swim platform and bridge

Dockside water pressure

Marquipt Tideride Ladder

Marquipt Step Ladder

Sunlounge and seating on bow w/covers

Windshield cover

Fortress FX 125 Anchor and new chain rode 2011

Fortress FX 55 Anchor with Hawse pipe and rode 2011

---

## Electrical System

---

The electrical systems include (2) 50 amp shore cords in the bow and (3) 50 amp outlets in the



stern making docking easier when connecting to shore power. (3) cords are on Glendenning Cable Masters

(2) Jefferson Electric ISO transformers

Onan 20KW Generator (aft) freshwater cooled generators with 3262 hours

Onan 20KW Generator (fwd) freshwater cooled generators with 3158 hours

Sound enclosures for generators

Three Glendenning 50 amp shore cords 3 with electric reels

(3) Automatic Battery Chargers

Battery Control Panels

AC and DC Electrical Panels

## **Mechanical**

---

Bow and stern thrusters

Naiad Stabilizers

1100 GPD Filtration Concept Watermaker

6 Blade Michigan Props

Custom Workbench

Stainless Grab Rails

Air Compressor

40 gallon hot water heater

Sewage holding tank

Underwater lighting

Glendenning Engine Synchronizers

DC Bilge Blowers

(2) engine hour meters

Racor Fuel Filters

AC Fluorescent Lighting

Block heaters

DC Lighting

(2) Ventilation Fans

Oil changing system (new 12/16)

Fuel priming pumps

(7) CruiseAir Marine air units with SMX online digital controls

---

## Engine Room

---

A stern thruster was installed with its own battery and charger system as well. Two Head hunter fresh water systems have been installed to provide redundancy when traveling to remote locations. Two self-priming raw water air conditioning pumps were plumbed (2014) with quick valve and switch including separate water pickups, separate seacox and separate strainers. The engine room ventilation/blower system has been upgraded to a "Delta T" system with moisture eliminators. A 150 gallon per hour fuel polishing system with timer has also been added. An air conditioning raw water distribution manifold was added for the purpose of isolating any compressor. The bow and stern thrusters were redone in 2011.

(2) Mach 5 Headhunter freshwater pumps

40 Gal AO Smith water heater

Filtration Concepts Inc XOX102GS desalination system (1100 GPD)

Air hose

(2) fuel priming pumps

Oberdorfer lubrication transfer system (new 2016)

Delta T Bridge blowers

(4) Racor filters

Fuel manifold valves

(2) self priming AC pumps (new 2014)

(5) drawer stainless tool box

Work bench

Shop vac

---

## Updates

---

Complete 3000 hr Caterpillar engine service (2/18) Raw water pumps replaced May 2017 Helm Station reupholstered April 2017 Bottom work completed June 2017 Serviced stabilizers Updated soft goods throughout All new canvas and upholstery in flybridge 2014 Prop Speed (12/15) Icemakers Aft Deck 2015 Glendenning Wireless Yacht Controller Exhaust Risers (new 5/14)

---

## Tender

---

2013 14' Nouverania with 50 HP Yamaha 4-stroke engine

---

## Exclusions

---

Owner's personal belongings

---

## Исключения

---

При продаже яхты исключаются личные вещи владельца.

---

## Отказ от ответственности

---

Компания предоставляет описание судна или яхты добросовестно, но не может гарантировать точность этой информации, а также не ручается за техническое

состояние. Покупатель должен проинструктировать своих агентов или оценщиков исследовать представленную информацию более подробно, по собственному желанию. Продажа судна или яхты, изменение цены или снятие с продажи будет происходить без предварительного уведомления.

# ФОТОГРАФИИ

**Port Profile**



**Bow**



**Bow**



**Bow**



**Bow**



**Bow**



**Bow**



**Passageway**



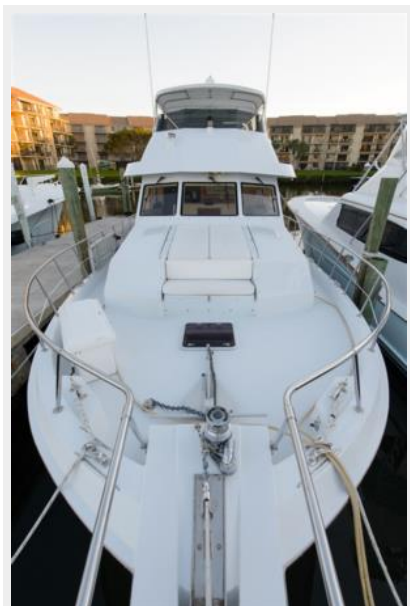
**Stbd Passageway**



**Bow**



**Bow**



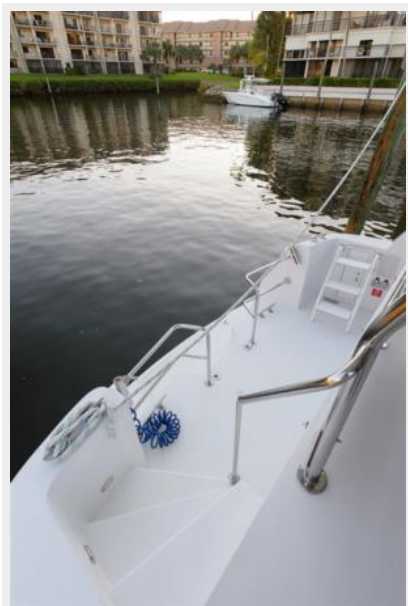
**Bow**



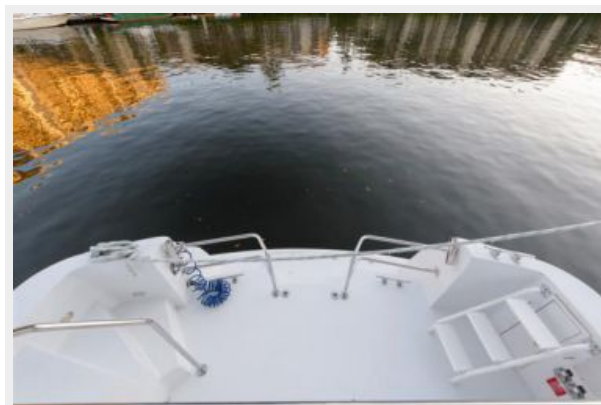
**Bow**



**Кокпит**



**Кокпит**



**Кокпит**



**Кокпит**





**Cockpit**



**Aft Deck**



**Aft Deck**



**Aft Deck**



**Aft Deck**



**Aft Deck**



**Flybridge**



**Flybridge**



**Flybridge**



**Flybridge**



**Flybridge**



**Flybridge**



**Flybridge**



**Flybridge**



**Flybridge**



**Flybridge**



**Flybridge**



**Flybridge**



**Flybridge**



**Flybridge**



**Flybridge**



**Flybridge**



**Pilothouse**



**Pilothouse**



**Pilothouse**



**Pilothouse**



**Salon**



**Salon**



**Salon**



**Salon**



Salon



Salon



Salon



Dinette



**Dinette**



**Galley**



**Galley**



**Galley**



**Galley**



**Galley**



**Dining**



**Dining**





**Laundry**



**Master Stateroom**



**Master Stateroom**



**Master Stateroom**



**Master Stateroom**



**Master Stateroom**



**Master Head**



**Master Head**



**Master Head**



**Master Head**



**VIP Stateroom**



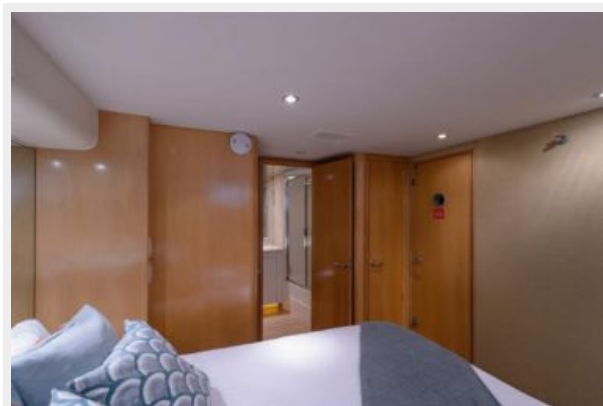
**VIP Stateroom**



**VIP Stateroom**



**VIP Stateroom**



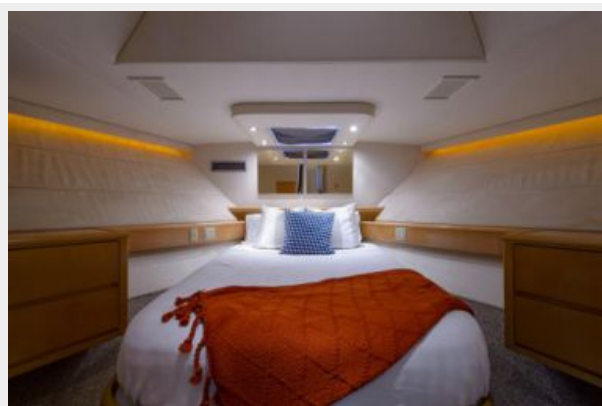
**VIP Head**



**VIP Head**



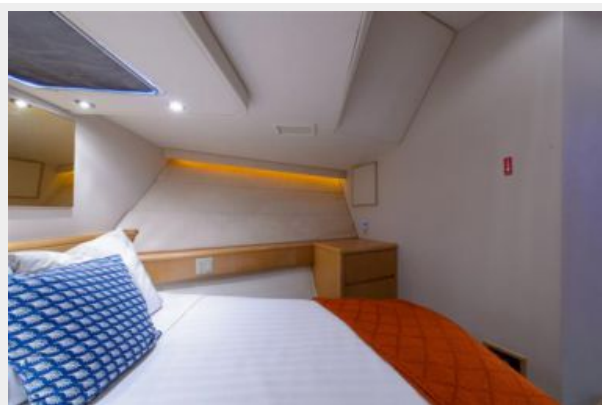
**Forward Stateroom**



**Forward Stateroom**



**Forward Stateroom**



**Forward Head**



**Guest Stateroom**



**Guest Stateroom**



**Guest Head**



**Guest Head**



**Generator Room**



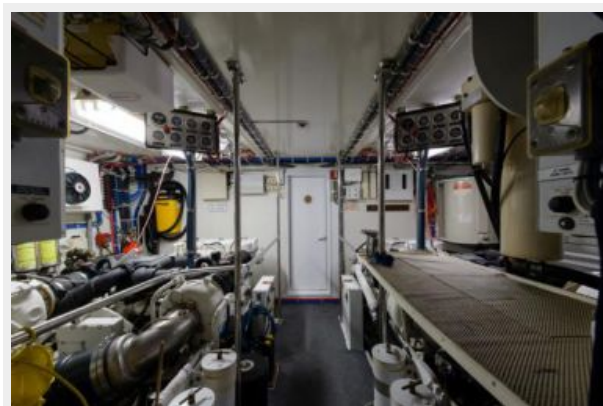
**Generator Room**



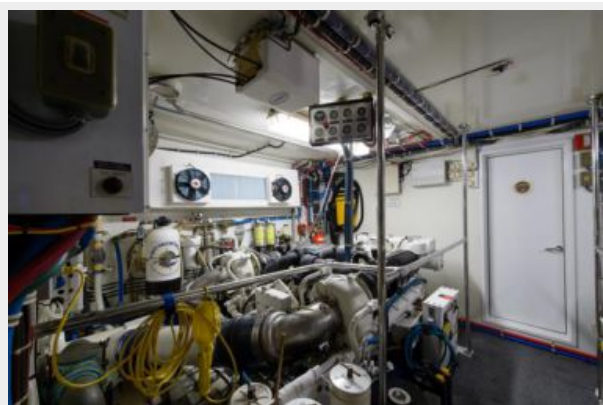
**Generator Room**



**Engine Room**



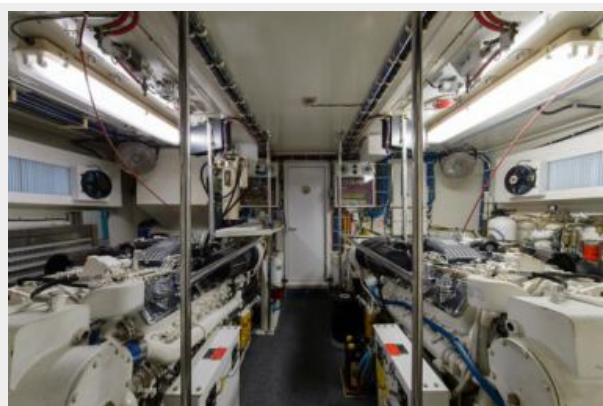
**Engine Room**



**Engine Room**



**Engine Room**



**Engine Room**



**Starboard Profile**



**Starboard Profile**



**Stern**



**Stern**



Stern



Stern



Stern



Stern





# КОНТАКТЫ

---

Андрей Шестаков (Andrey Shestakov) – ведущий яхтенный брокер отдела продаж яхт и судов компании Shestakov Yacht Sales Inc. Официальный представитель Shestakov Yacht Sales Inc. для русскоговорящих клиентов в центральном офисе компании в Майами/Форт Лодердейл/Флорида/США.

## Контактная информация

---

Email: [andrey@shestakovyachtsales.com](mailto:andrey@shestakovyachtsales.com)

Web: [shestakovyachtsales.com](http://shestakovyachtsales.com)

## Телефоны

---

Краснодарский край: **+7(918)465-66-44**

США, Майами, Флорида: **+1(954)274-4435**

## Время работы

---

Понедельник – Суббота: **9:00 - 21:00**  
EDT

Воскресенье: **Закрето**

## Адрес

---



Harbour Towne Marina, 850 NE 3rd St,  
STE 213, Dania, FL 33004