

## BLUES — SOUTHERN WIND SHIPYARDS



**Builder:** SOUTHERN WIND SHIPYARDS

**Year Built:** 2010

**Model:** Sloop

**Price:** PRICE ON APPLICATION

**Location:** Spain

**LOA:** 99' 1" (30.20m)

**Beam:** 22' 0" (6.70m)

**Max Draft:** 13' 0" (3.95m)

Our experienced yacht broker, Andrey Shestakov, will help you choose and buy a yacht that best suits your needs **BLUES — SOUTHERN WIND SHIPYARDS** from our catalogue. Presently, at Shestakov Yacht Sales Inc., we have a wide variety of yachts available on our sale's list. We also work in close contact with all the big yacht manufacturers from all over the world.

If you would like to buy a yacht **BLUES — SOUTHERN WIND SHIPYARDS** or would like help answering any questions concerning purchasing, selling or chartering a yacht, please call **+1(954)274-4435**

# TABLE OF CONTENTS

TABLE OF CONTENTS	2
SPECIFICATIONS	4
Overview	4
Basic Information	4
Dimensions	4
Speed, Capacities and Weight	4
Accommodations	4
Hull and Deck Information	5
Engine Information	5
PHOTOS	6
BLUES EXTERIOR	6
BLUES EXTERIOR	6
BLUES EXTERIOR	6
BLUES EXTERIOR	6
BLUES EXTERIOR	6
BLUES EXTERIOR	6
BLUES EXTERIOR	7
BLUES EXTERIOR	7
BLUES EXTERIOR	7
BLUES INTERIOR	7
BLUES INTERIOR	7
BLUES INTERIOR	7
BLUES INTERIOR	8
BLUES INTERIOR	8
BLUES INTERIOR	8
BLUES INTERIOR	8
BLUES INTERIOR	8
BLUES INTERIOR	8

---

BLUES INTERIOR	9
BLUES INTERIOR	9
BLUES INTERIOR	9
CONTACTS	10
Contact details	10
Telephones	10
Office hours	10
Address	10

---

# SPECIFICATIONS

---

## Overview

---

Blues is a sail **30.20m (99'0"ft)** built by Southern Wind Shipyard and launched in 2010. Nauta Design is responsible for her beautiful exterior and interior design.

This Performance luxury yacht has a composite hull , a beam of 6.70m (21'11"ft) and a 3.95m (12'11"ft) draft . This 30.20 (99'0"ft) Performance has a maximum 424.0 sq.m. of sail on masts and boom, which give this luxury yacht an air draft of 3.95m (12'11"ft). Blues has just successfully completed her 10 years survey.

## Basic Information

---

**Category:** Sloop

**Model Year:** 2010

**Year Built:** 2010

**Country:** Spain

## Dimensions

---

**LOA:** 99' 1" (30.20m)

**LWL:** 86' 0" (26.20m)

**Beam:** 22' 0" (6.70m)

**Max Draft:** 13' 0" (3.95m)

## Speed, Capacities and Weight

---

**Displacement:** 136686.60244 Pounds

## Accommodations

---

**Total Cabins:** 4

**Sleeps:** 8

**Crew Berths:** 4

**Crew Sleeps:** 4

---

## Hull and Deck Information

---

**Hull Material:** Composite

---

## Engine Information

---

**Engines:** 1

**Manufacturer:** Cummings

**Engine Type:** Inboard

**Fuel Type:** Diesel

# PHOTOS

**BLUES EXTERIOR**



**BLUES EXTERIOR**



**BLUES EXTERIOR**



**BLUES EXTERIOR**



**BLUES EXTERIOR**



**BLUES EXTERIOR**



**BLUES EXTERIOR**



**BLUES EXTERIOR**



**BLUES EXTERIOR**



**BLUES INTERIOR**



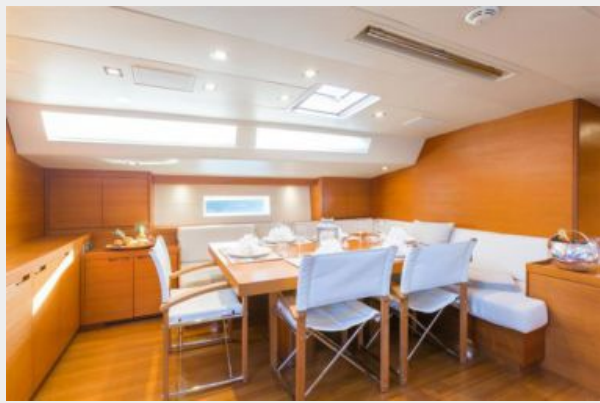
**BLUES INTERIOR**



**BLUES INTERIOR**



**BLUES INTERIOR**



**BLUES INTERIOR**



**BLUES INTERIOR**



**BLUES INTERIOR**



**BLUES INTERIOR**



**BLUES INTERIOR**





**BLUES INTERIOR**



**BLUES INTERIOR**



**BLUES INTERIOR**



# CONTACTS

---

Andrey Shestakov, leading yacht broker of the sales department of Shestakov Yacht Sales Inc. Shestakov Yacht Sales Inc., the official representative of the Miami/Fort Lauderdale FL headquarters.

## Contact details

---

Email: [andrey@shestakovyachtsales.com](mailto:andrey@shestakovyachtsales.com)

Web: [shestakovyachtsales.com/en/](http://shestakovyachtsales.com/en/)

## Telephones

---

USA: +1(954)274-4435

## Office hours

---

Monday – Saturday: **9:00 - 21:00** EDT

Sunday: **closed**

## Address

---



Harbour Towne Marina, 850 NE 3rd St,  
STE 213, Dania, FL 33004