

SWEET & SALTY — AZIMUT



Судостроитель: [AZIMUT](#)

Год постройки: 2014

Модель: Моторная яхта

Цена: **ЦЕНА ЯХТЫ ПО ЗАПРОСУ**

Местонахождение: United States

Длина общая: 70' 0" (21.34m)

Ширина: 18' 11" (5.77m)

Крейс. скорость: 27 Kts. (31 MPH)

Макс. скорость: 33 Kts. (38 MPH)

Купить **Sweet & Salty — AZIMUT** а также выбрать подходящую вам яхту из нашего каталога яхт вам поможет опытный яхтенный брокер Андрей Шестаков. На сегодняшний день компания **Shestakov Yacht Sales Inc.** имеет большое количество яхт в собственном списке продаж, а также тесно сотрудничает со всеми крупными яхтенными производителями по всему миру.

Для того чтобы купить яхту **Sweet & Salty — AZIMUT** а также проконсультироваться по любому вопросу связанному с покупкой, продажей, чартером яхт позвоните по телефону **+7(918)465-66-44**.

ОГЛАВЛЕНИЕ

ОГЛАВЛЕНИЕ	2
ХАРАКТЕРИСТИКИ	4
Обзор	4
Основная информация	4
Размеры	4
Скорость, вместимость и масса	4
Размещение	5
Корпус и палуба	5
Информация о двигателе	5
ПОДРОБНОЕ ОПИСАНИЕ	6
Salon	6
Galley	6
Master Stateroom and Head	6
VIP Stateroom and Head	7
Guest Stateroom, Port	7
Guest Stateroom, Starboard	8
Electronics and Navigation Equipment	8
Flybridge Helm	9
Flybridge Equipment	9
Flybridge Aft Deck	10
Deck and Cockpit Equipment	10
Transom	10
Forward Deck	11
Electrical Equipment	11
Engine and Mechanical Equipment	11
Captains Quarters	12
Custom Upgrades/Additions	12
Исключения	13

Отказ от ответственности	13
ФОТОГРАФИИ	14
КОНТАКТЫ	25
Контактная информация	25
Телефоны	25
Время работы	25
Адрес	25

ХАРАКТЕРИСТИКИ

Обзор

2014 Azimut 70' Motor Yacht "SWEET & SALTY"

Sweet and Salty is just that, Sweet! She is the best equipped and newest Azimut 70 Flybridge Motor Yacht on the market today.

With her Tenerife, Blue Hull and Dark Zebrano Mahogany interior she is the most desirable available.

She carries a Nautica Jet Drive Inflatable tender on her boat deck, leaving additional room for other watercraft on her hydraulic swim platform.

With her LOW HOURS and LOW PRICE she will certainly be the next Azimut 70 Flybridge Motor Yacht sold!

Основная информация

Тип судна: Моторная яхта

Подкатегория: Flybridge

Модельный год: 2014

Год постройки: 2014

Страна: United States

Размеры

Длина общая: 70' 0" (21.34m)

Ширина: 18' 11" (5.77m)

Скорость, вместимость и масса

Крейс. скорость: 27 Kts. (31 MPH)

Макс. скорость: 33 Kts. (38 MPH)

Вместимость воды: 317 Gallons

Вместимость сточного бака: 92 Gallons

Объем топливного бака: 1268 Gallons

Размещение

Всего кают: 4

Всего коек: 6

Спальные места: 8

Всего ком. состава: 4

Каюта капитана: Да

Каюты экипажа: 1

Койки экипажа: 1

Спальных мест экипажа: 2

Корпус и палуба

Материал корпуса: Fiberglass

Информация о двигателе

Двигатели: 2

Производитель: MAN

Модель: V12

Тип двигателя: Inboard

Тип топлива: Diesel

ПОДРОБНОЕ ОПИСАНИЕ

Salon

- Custom Zebrano dark mahogany woodwork
- Custom luxurious carpeting w/soundproofing (new 2015)
- Custom wine cooler & cabinetry
- Furnishings in dark mahogany wood
- Custom U-shaped leather convertible sofa w/custom stitching
- Oversized leather ottoman/coffee table
- (2) Leather upholstered chairs
- Upgraded audio/visual equipment w/Samsung 46" flatscreen TV in a custom hi/lo cabinet, Sonas playbar, Pioneer speakers, stereo w/bluetooth & Unidock, Subwoofer amplifiers, Samsung Blue Ray player, DirectTV Receiver & Apple TV
- Custom window treatments w/blinds & curtains for salon door
- Vinotemp wine fridge

Galley

- Refrigerator/freezer
- Miele inductor cooktop
- Miele convection oven
- Miele microwave
- Miele dishwasher
- Exhaust hood
- Dark Emperador marble counter tops
- Stainless steel sink w/wood cutting boards
- U-shaped leather dinette to starboard
- Table w/removable insert
- Custom galley storage
- Zebrano dark mahogany flooring
- Miele washer/dryer (located in companionway)

Master Stateroom and Head

- Custom king berth w/upgraded mattress (new 2015)
- Custom spread & shams (new 2015)
- Upholstered padded headboard
- Smoked glass mirrors around headboard
- Custom overhead soffit w/lighting
- (2) Reading lamps

- (2) Built-in side tables
- Step up to built in settee w/fold up table
- Storage & safe under berth
- Walk-in closet
- Chest of drawers & vanity
- Samsung LED 40" TV, Apple TV, Sonas playbars, DirectTV Receiver
- (4) Portholes that can be opened
- (8) Windows
- Deck hatch (emergency exit through the walk-in wardrobe)
- New carpeting
- Custom window treatments w/Venetian blinds & electric blackout blinds
- Private bath w/custom Pallisandro marble vanity top, full size shower, double sinks, custom fixtures, mirrored medicine cabinet & port opening w/blinds

VIP Stateroom and Head

- Queen berth w/upholstered base, upgraded mattress & storage below
- Custom spread & pillows
- Upholstered headboard
- Smoked glass mirrors on headboard
- Custom overhead soffit w/mirror & lighting
- Wall cabinets
- (2) Reading lights
- (2) Portholes that can be opened
- (10) Windows (5 on each side)
- Samsung 26" LED TV, Apple TV, Sonas playbar, Direct TV Receiver
- Custom pleated blinds
- Private bath w/custom Pallisandro marble vanity top, full size shower, large sink, custom fixtures, mirrored medicine cabinet & port opening w/blinds

Guest Stateroom, Port

- Upgraded double berth
- Custom spread & pillow shams (new 2015)
- Upholstered headboard w/smoke mirrors behind
- Nightstand
- Opening port Lights
- Custom Venetian blinds
- Samsung 21" TV, Apple TV, Direct TV receiver, Sonas soundbar
- Private bath w/custom Pallisandro marble vanity top, full size shower, large sink, custom fixtures, mirrored medicine cabinet & port opening w/blinds

Guest Stateroom, Starboard

- Twin berths with filler board & cushion
- Custom spread & shams
- Smoked glass mirrors on headboard
- Nightstand
- Opening porthole
- Samsung 18" LED TV, Apple TV, Direct TV Receiver, Sonas soundbar
- Custom Venetian blinds
- Private bath w/custom Pallisandro marble vanity top, full size shower, large sink, custom fixtures, mirrored medicine cabinet & port opening w/blinds

Electronics and Navigation Equipment

- Raymarine GS electronics package w/ (4) displays
- Evolution Autopilot
- Raymarine AIS system
- Raymarine DSM 300 color sounder
- Remote joystick
- Multitask display w/alarms for bow bilge, engine bilge, helm compartment bilge, grey water high level, black water high level, Racor filters, navigation lights, shore
- Sockets, low battery voltage, engine room fans, low fuel level
- Direct access to the side walkways
- Rudder angle indicator
- MAN indicators
- Chain counter Quixk
- (2) Seakeeper Gryo 8000 stabilizers controls
- Remote controlled light
- Adjustable steering wheel in stainless steel and cherry wood
- Magnetic compass
- Xenta Joy Stick
- Joystick for trim tabs, wipers
- Activation for bow anchor winch, navigation lights, bow & stern thruster, windshield wiper and washer, trim tabs, fire fighting pump
- Engine ignition
- Engine electronic remote controls (levers)
- MAN display
- Raymarine Dual GS Series touchscreen
- RM Autopilot
- RM VHF Radio
- RM Depth/ Speed
- (4) Raymarine video camera's, aft, flybridge, engine room, & night vision
- Deep wave router

- V Sat V7-IP system w/2 domes, HD7 plus
- Leather upholstered helm seats w/headrests

Flybridge Helm

- Azimut Montronic display
- Raymarine Dual G Series Radar/ Plotter
- Raymarine ST6002 Autopilot
- (2) Raymarine RAY240 VHF w/repeaters
- Raymarine ST60 depth/ speed
- Raymarine FLIR nightvision
- ACR EPIRB
- Rudder angle indicator
- Side Power bow and stern thrusters
- Engine control instrumentation
- Electronic remote control for throttles
- Windlass chain counter
- Compass
- Trim tab controls and indicators
- Xenta Joy Stick
- Engine and marine gear instrumentation
- Horn single trumpet electric
- Air and navigation light controls

Flybridge Equipment

- Access from cockpit stairway
- Access hinged hatch opening
- Adjustable aluminum steering wheel
- Teak table w/high gloss finish & deck chairs
- Bar w/sink, Vitirilo refrigerator, Raritan icemaker & Kenyon electric grill
- Large sunpad lounges w/cushions, forward
- Fusion Stereo MS-IP700 AM/FM/Sirius/iPod
- (11) JBL outdoor speakers
- Plexiglas windshield w/stainless steel frame
- Steering wheel control
- Fire fighting pump controls
- 12v cigarette lighter socket
- Jabsco electric searchlight control
- Navigation lights
- Electric searchlight
- 6-person life raft w/EPIRB

- Teak decks
- (2) Flood lights
- Sunbrella custom canvas covers for all ext furniture, wet bar & sun pads

Flybridge Aft Deck

- 2013 Nautica jet tender
- Custom tender chocks
- Bridge crane for tender
- Teak decks

Deck and Cockpit Equipment

- Built-in U-shaped seating w/cushions & storage below
- Teak table w/high gloss finish & (4) teak deck chairs
- Custom bar w/Waeco refrigerator
- Deluxe glass sliding door to salon
- Samsung 32" TV w/Direct TV, Apple TV & Sonas Playbar
- Sunbrella custom canvas covers for all exterior furniture & bar
- Watertight door on stbd side access to the galley
- Stainless steel rub rails
- Fuel and water fillers on the side walkways
- Black water tank discharge intake on the side walkways
- (2) Cleats, amidships, for each side
- Deck winches
- Teak decks
- Marquipt sea stairs w/mounts, port & stbd
- Cockpit boarding gates
- H2O washdown
- H2O supply line

Transom

- Access to cockpit from swim platform w/2 ladders & gangway
- Salon access door w/ 2 stainless steel-crystal glass shutters
- Transom door to engine room
- (2) Electric warping winches
- Opacmare telescoping passerelle
- Hydraulic swim platform w/teak decking & lighting
- Glendining cable master
- (2) Stainless steel fair leads

- Hydraulic retracting gangway
- Shower with hot and cold water
- Boarding ladder
- Underwater lights at transom

Forward Deck

- 2500W Lofrans 2500 anchor winch
- Anchor winch controls
- Anchor peak with drainage and fender compartment
- Anchor chain w/washdown
- Hawse hole (anchor passage at stern)
- Stainless steel guard & hand rails around bow area
- (2) Stainless steel cleats (one on each bulkhead)
- Anchor chain compartment
- Deck hatch
- (2) Hand rails
- Teak decks
- Side windows and windshield net covers
- Bow sunpads w/kick up headrest
- Sunlounge cushions and glass holders

Electrical Equipment

- Twin Kohler w/sound shields (1100 Hrs / 1100 Hrs)
- Racor fuel filters
- (2) Glendenning cablemasters
- Mastervolt 12v/ 25amp battery charger
- Gost security system w/Navtracker
- Wireless smoke detectors thru out
- Custom installation for invertors, chargers, batteries, battery boxes
- (2) Additional weatherproof 110v outlets
- (6) Additional 110v outlets
- (6) Additional 12v outlets
- Central vacuum system

Engine and Mechanical Equipment

- Twin MAN V12 CR with 1360HP/ 700 hrs
- (2) Seakeeper Gyro Stabilizers
- Side Power bow & stern thrusters w/variable speed & proportional deflection w/S-Link

system

- Xenta wireless yacht controller for engines & thrusters
- Cooling bilge system pump
- (2) 220v fans
- (2) 220v air extractors
- Racor fuel filters
- Algae-X fuel polishing system
- ZF ZF665A 1.971:1 transmissions
- 3" Stainless Steel propeller shaft
- (2) Bronze 5-bladed propellers
- Custom modular watermaker
- Seafari mini H2O maker w/remote control
- Oil change system - 24volt pump servicing engines, generator and gears
- Fuel primer system - manual pumps on engines and generators
- Headhunter grey H2O tank
- Black water pump
- Ventilation dry bilge system (new 2015)
- Bilge vacuum system eliminating any water in bilges
- Additional heavy duty sump pump
- Custom water filling valve allowing dockside water to feed/fill water tank
- Aluminum salt reducing filter for engine room intake & exhaust system
- Spare set of running gear, props & shafts
- (3) High definition color cameras

Captains Quarters

- Captain's cabin w/full berth w/upgraded latex mattress
- Crew cabin w/single berth w/upgraded latex mattress
- Seakeepers under berth
- Samsung TV, Direct TV receiver, Sonos playbar, Apple TV
- Washer & dryer
- Porthole that can be opened

Custom Upgrades/Additions

- Tenerife Blue hull w/Bright Arctic white gel coat
- Custom Zebrano wood joinery interior throughout
- New open galley arrangement
- Custom hardtop w/retractable opening
- Stern thruster w/proportional & variable speed integrated to Xenta joy stick
- Gost Phantom Security system

- Glendenning cablemaster
- Opacmare telescopic hydraulic gangway
- Teak flybridge decks
- Underwater lights
- Cockpit chairs
- Nautica jet boat tender & davit
- Safe installed in master
- Custom wooden flooring w/sound proofing
- (2) Seakeeper Gyro stabilizers
- Hi-lo system for 32" TV in salon
- Refrigerator in cockpit
- Dinette table w/removable insert
- Electric searchlight control
- Painted hull in Tenerife Blue & Bright Arctic white gel coat
- Watermaker predisposition
- Washer/Dryer units in lower deck
- Exterior woods in high gloss satin finish
- Custom Emperador marble on galley countertops & Pallisandro marble vanity tops in all baths

Исключения

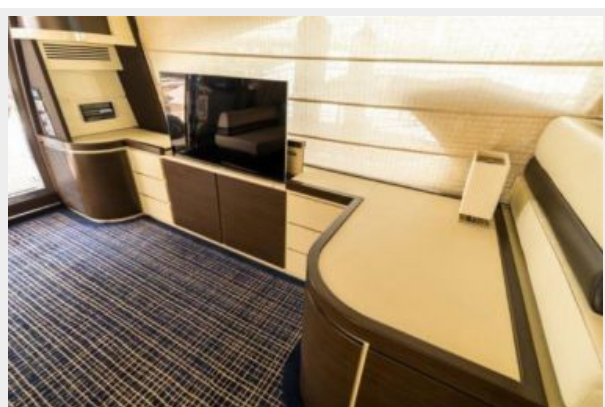
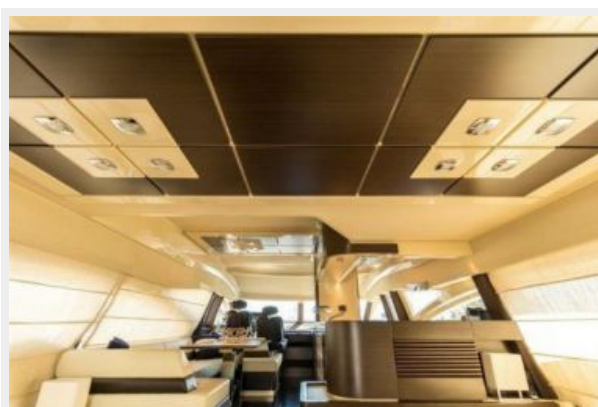
При продаже яхты исключаются личные вещи владельца.

Отказ от ответственности

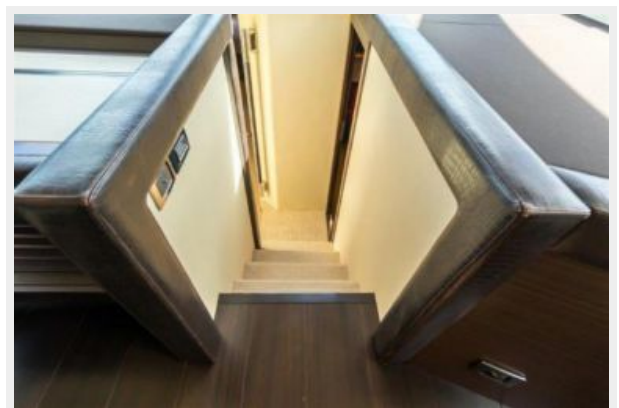
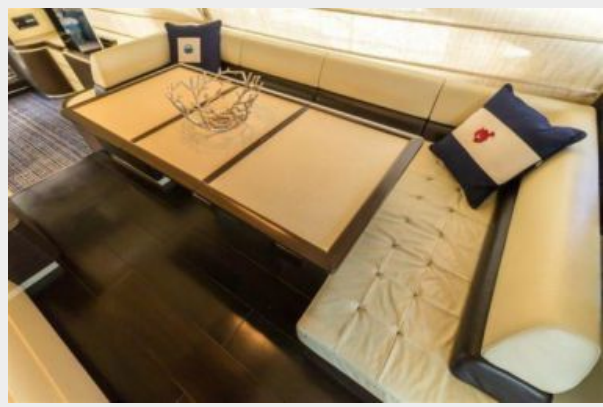
Компания предоставляет описание судна или яхты добросовестно, но не может гарантировать точность этой информации, а также не ручается за техническое состояние. Покупатель должен проинструктировать своих агентов или оценщиков исследовать представленную информацию более подробно, по собственному желанию. Продажа судна или яхты, изменение цены или снятие с продажи будет происходить без предварительного уведомления.

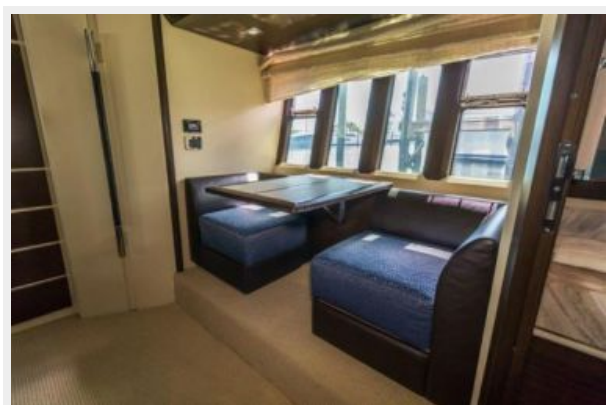
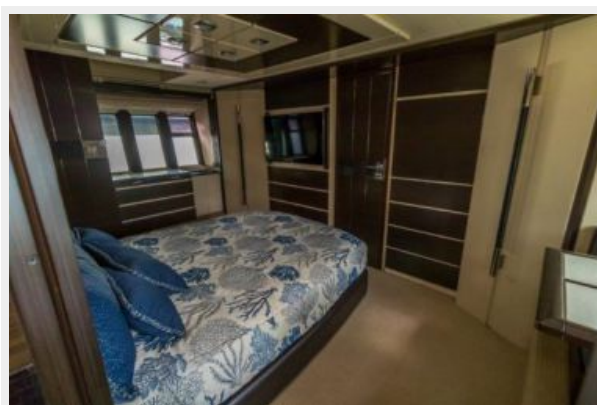
ФОТОГРАФИИ

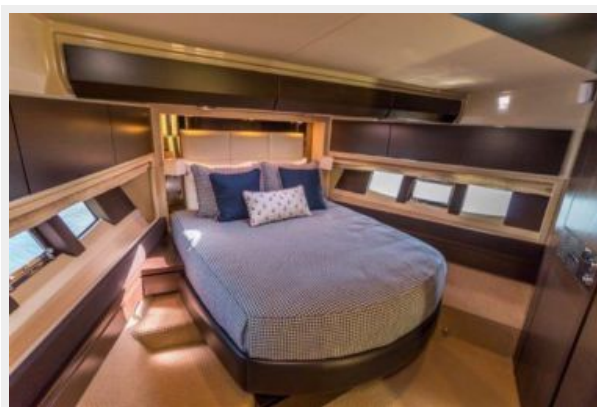
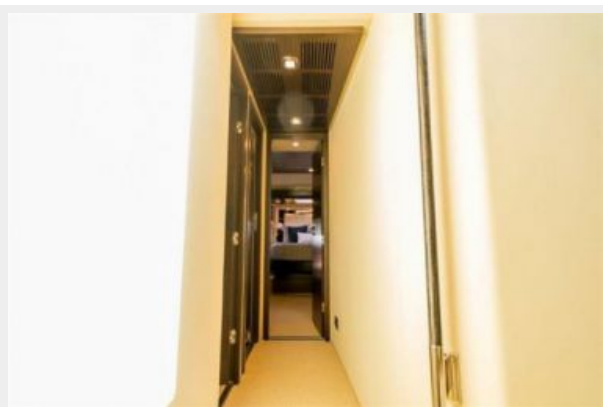
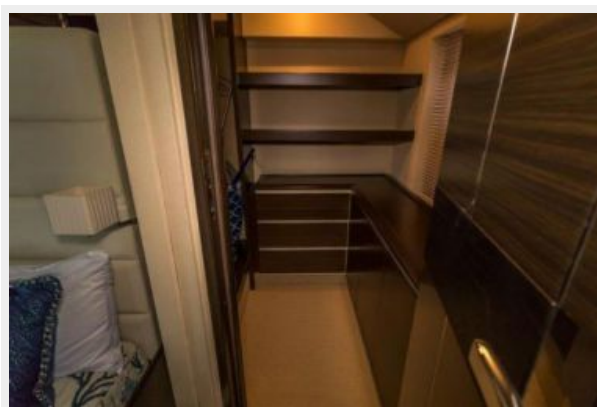
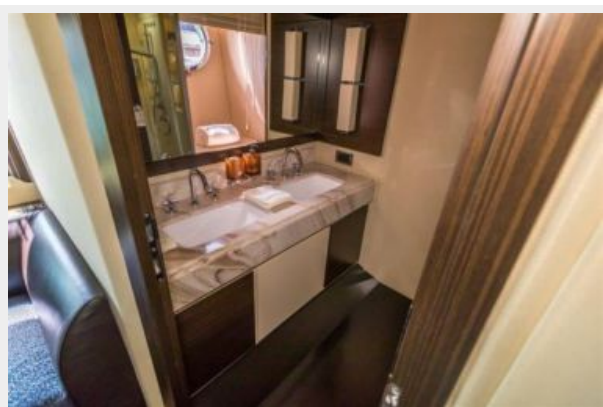


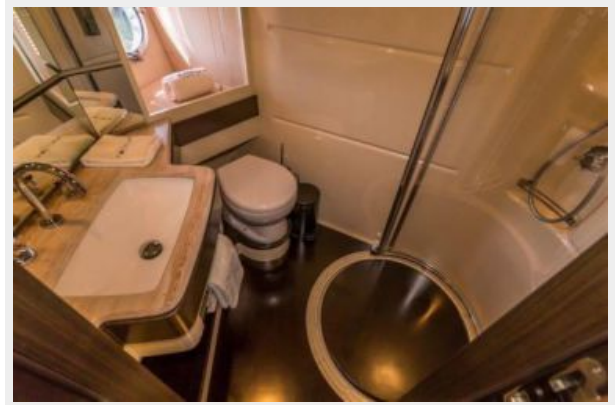




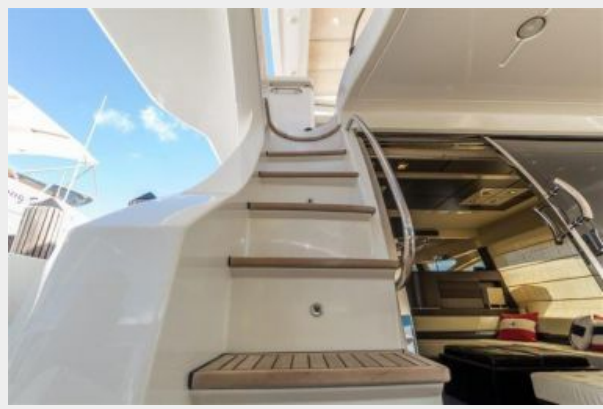
















КОНТАКТЫ

Андрей Шестаков (Andrey Shestakov) – ведущий яхтенный брокер отдела продаж яхт и судов компании Shestakov Yacht Sales Inc. Официальный представитель Shestakov Yacht Sales Inc. для русскоговорящих клиентов в центральном офисе компании в Майами/Форт Лодердейл/Флорида/США.

Контактная информация

Email: andrey@shestakovyachtsales.com

Web: shestakovyachtsales.com

Телефоны

Краснодарский край: **+7(918)465-66-44**

США, Майами, Флорида: **+1(954)274-4435**

Время работы

Понедельник – Суббота: **9:00 - 21:00**
EDT

Воскресенье: **Закрето**

Адрес



Harbour Towne Marina, 850 NE 3rd St,
STE 213, Dania, FL 33004