

MISS BRADFORD — RYBOVICH



Builder: RYBOVICH

Year Built: 1970

Model: Sport Fisherman

Price: PRICE ON APPLICATION

LOA: 55' (16.76mm)

Beam: 17.33

Max Draft: 4' (1.22mm)

Cruise Speed: 18 Knots Kts. (21 MPH)

Max Speed: 20 Knots Kts. (23 MPH)

Our experienced yacht broker, Andrey Shestakov, will help you choose and buy a yacht that best suits your needs **MISS BRADFORD — RYBOVICH** from **our catalogue**. Presently, at **Shestakov Yacht Sales Inc.**, we have a wide variety of yachts available on **our sale's list**. We also work in close contact with all the big **yacht manufacturers** from all over the world.

If you would like to buy a yacht **MISS BRADFORD — RYBOVICH** or would like help answering any questions concerning purchasing, selling or chartering a yacht, please call **+1(954)274-4435**

TABLE OF CONTENTS

TABLE OF CONTENTS	2
SPECIFICATIONS	4
Overview	4
Basic Information	4
Dimensions	4
Speed, Capacities and Weight	4
Accommodations	4
Hull and Deck Information	5
Engine Information	5
PHOTOS	6
Stern	6
Profile	6
Salon	7
Profile	7
Salon	7
Galley	7
Galley	7
Companionway	7
Port Stateroom	8
Port Stateroom Bath	8
Starboard Stateroom	8
Starboard Stateroom Bath	8
Bow Stateroom	8
Engine Room	8
Engine Room	9
Generator	9
Bow View of Hull	9
Running Gear	9

Transom/Exhaust	9
CONTACTS	10
Contact details	10
Telephones	10
Office hours	10
Address	10

SPECIFICATIONS

Overview

Professionally maintained by Bradford Marine with a full paint job in 2012!!

Basic Information

Category: Sport Fisherman

Model Year: 1970

Year Built: 1970

Dimensions

LOA: 55' (16.76mm)

Beam: 17.33

Max Draft: 4' (1.22mm)

Speed, Capacities and Weight

Cruise Speed: 18 Knots Kts. (21 MPH)

Max Speed: 20 Knots Kts. (23 MPH)

Gross Tonnage: 46 Pounds

Water Capacity: 300 Gallons

Fuel Capacity: 1000 Gal Gallons

Accommodations

Total Cabins: 3

Total Berths: 6

Sleeps: 7

Total Heads: 3

Crew Cabin: 1

Crew Berths: 1

Crew Heads: 1

Hull and Deck Information

Hull Material: Fiberglass Over Wood

Deck Material: Wood

Hull Color: white

Hull Designer: Rybovich and Sons

Interior Designer: Tommy Rybovich

Engine Information

Engines: 2

Manufacturer: Detroit Diesel

Engine Type: Inboard

PHOTOS

Stern



Profile



Profile



Salon



Salon



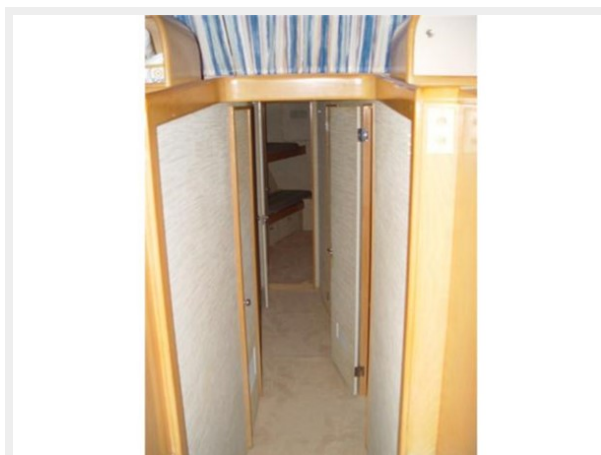
Galley



Galley



Companionway



Port Stateroom



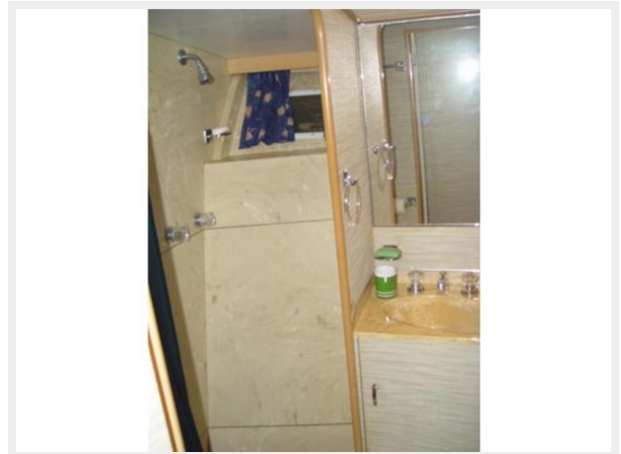
Port Stateroom Bath



Starboard Stateroom



Starboard Stateroom Bath



Bow Stateroom



Engine Room



Engine Room



Generator



Bow View of Hull



Running Gear



Transom/Exhaust



CONTACTS

Andrey Shestakov, leading yacht broker of the sales department of Shestakov Yacht Sales Inc. Shestakov Yacht Sales Inc., the official representative of the Miami/Fort Lauderdale FL headquarters.

Contact details

Email: **andrey@shestakovyachtsales.com**

Web: shestakovyachtsales.com/en/

Telephones

USA: **+1(954)274-4435**

Office hours

Monday – Saturday: **9:00 - 21:00** EDT

Sunday: **closed**

Address



Harbour Towne Marina, 850 NE 3rd
St, STE 213, Dania, FL 33004