

RARE DIAMOND — SANLORENZO



Судостроитель: SANLORENZO

Год постройки: 2011

Модель: Моторная яхта

Цена: **ЦЕНА ЯХТЫ ПО ЗАПРОСУ**

Местонахождение: United States

Длина общая: 104' 0" (31.70m)

Ширина: 23' 4" (7.11m)

Макс. осадка: 6' 7" (2.01m)

Крейс. скорость: 23 Kts. (26 MPH)

Макс. скорость: 28 Kts. (32 MPH)

Купить **Rare Diamond — SANLORENZO** а также выбрать подходящую вам яхту из нашего каталога яхт вам поможет опытный яхтенный брокер Андрей Шестаков. На сегодняшний день компания **Shestakov Yacht Sales Inc.** имеет большое количество яхт в собственном списке продаж, а также тесно сотрудничает со всеми крупными яхтенными производителями по всему миру.

Для того чтобы купить яхту **Rare Diamond — SANLORENZO** а также проконсультироваться по любому вопросу связанному с покупкой, продажей, чартером яхт позвоните по телефону **+7(918)465-66-44**.

ОГЛАВЛЕНИЕ

ОГЛАВЛЕНИЕ	2
ХАРАКТЕРИСТИКИ	4
Обзор	4
Основная информация	4
Размеры	4
Скорость, вместимость и масса	4
Размещение	5
Корпус и палуба	5
Информация о двигателе	5
ПОДРОБНОЕ ОПИСАНИЕ	6
Introduction/Accommodations	6
Galley	6
Main Helm	7
Flybridge Helm	7
Master Stateroom	8
Companionway - Lower deck	8
Twin Guest Stateroom - Below deck forward	8
Twin Guest Stateroom-Below deck aft	9
Deck/Hull	9
Engine Room	10
Crew	10
Fire System	11
Electrical System	11
Audio Visual Equipment	11
Classification	13
Исключения	14
Отказ от ответственности	14
ФОТОГРАФИИ	15

КОНТАКТЫ	27
Контактная информация	27
Телефоны	27
Время работы	27
Адрес	27

ХАРАКТЕРИСТИКИ

Обзор

"Rare Diamond" is a fitting designation for this exotic Italian gem. Her gelcoat absolutely shines and there is extreme attention to detail in the design and care of this vessel. Hand carved wenge and bleached anigre woods are contrasted with the sleekness and reflective properties of bronzed glass and stainless steel. Fossilized marbles have been carved to complement the rustic beauty of natural, time worn stones and supple leathers are used as a design element creating yet another layer of tactile interest.

We welcome your inquiries and will be pleased to schedule visits by appointment.

Основная информация

Тип судна: Моторная яхта

Модельный год: 2011

Год постройки: 2011

Страна: United States

Размеры

Длина общая: 104' 0" (31.70m)

Ширина: 23' 4" (7.11m)

Макс. осадка: 6' 7" (2.01m)

Скорость, вместимость и масса

Крейс. скорость: 23 Kts. (26 MPH)

Макс. скорость: 28 Kts. (32 MPH)

Водоизмещение: 274000 Pounds

Вместимость воды: 739 Gallons

Вместимость сточного бака: 383 Gallons **Объем топливного бака:** 3302 Gallons

Размещение

Всего кают: 5

Спальные места: 11

Всего ком. состава: 6

Каюты экипажа: 3

Спальных мест экипажа: 5

Корпус и палуба

Материал корпуса: Fiberglass

Информация о двигателе

Двигатели: 2

Производитель: MTU

Модель: 16V2000M93

Тип двигателя: Inboard

Тип топлива: Diesel

ПОДРОБНОЕ ОПИСАНИЕ

Introduction/Accommodations

From a distance, Rare Diamond impresses with her stylish lines and her glistening gelcoat. Upon closer inspection, she appears flawless with her newly refinished teak decks and shiny chrome accents. Enter the vessel via sliding doors to a fabulous Salon impeccably furnished with earthy toned fabrics and natural woods. Random planked solid wood flooring is used throughout the main deck and a selection of aneigre, wenge, dragon wood, and bronze stainless steel are featured in the cabinetry throughout the vessel. Custom bronze stainless overhead liners are utilized in the salon, corridors, master stateroom, and heads. LED lighting throughout.

Rare Diamond boasts 5 luxurious staterooms, each with en suite. The Master Stateroom is located on-deck. 4 Guest Staterooms are located below deck, (2) with queen berths and (2) with twin berths. One of the twin berth staterooms also has a pulman berth. In total, she sleeps 11 Guests.

Crew is below deck forward with (3) staterooms accommodating up to 5 crew.

Galley

- Located forward to port
- Miele built in professional coffee machine
- Miele full oven
- Miele steaming oven
- Miele speed oven
- Miele warming drawers
- Miele ventilation hood
- Multiple stainless steel drawer storage
- Miele microwave
- Jenn Air garbage compactor
- Miele dishwasher
- Miele small dishwasher
- Double stainless steel sink with cutting surface
- Miele KM5733 induction cooktop
- Miele CS1326Y Tapen Yaki cooktop
- Insinkerator disposal
- Blanco Faucet with hose
- Sub Zero refrigerator
- 2 drawer freezer located under refrigerator
- Forward access to crew from Galley

Main Helm

The Main Helm Station is accessed via stairs forward of the Salon to Port.

- Leather shaped seating
- Leather Besenzoni helm seat
- MTU digital throttle
- ABT-Trac bow & stern thruster controls
- Raymarine hailer - Ray 218
- Raymarine ST70 with displays (x2)
- ACR spotlight control
- Trim tab controls and indicators
- Autronica Autoprime (Autronitalia fire & security system)
- Remote camera monitor
- RAYmarine ST60+ (rudder indicator)
- Wiper control (3)
- Digital Vessel Monitoring System by Sanlorenzo (indicates: alarms, control panel, fans, fuel tanks, water tanks, bilge pumps, power sources including DC, navigation lights, and general lights)
- Horn switch
- MTU digital engine monitors with temperature
- Denon entertainment system with DirecTV box for flybridge

Flybridge Helm

The Flybridge is immense and may be accessed via stairs from the aft deck or stairs from the Main Helm. A hard top covers the helm area and dining area.

- Hard top
- Eisenglass side enclosures
- A/C with climate control
- Bench helm seating
- Glass storage behind helm seats
- Bench seating opposite helm
- 10 person wood table with 10 director type chairs
- Center station with built in TV, U-Line icemaker, and stainless refrigerator. Top slides to reveal sink and cooktop
- Expansive sunlounge area with various seating arrangements

Helm Electronics:

- Raymarine ST60+ rudder indicator
- Raymarine ST70+ with control pad
- Raymarine ST70

- Raymarine radar control
- Raymarine Ray218 hailer
- ACR spotlight control
- Sanlorenzo B&B interphone system
- Windlass controls
- ABT-Trac bow & stern thruster controls
- Trim tab controls and indicators
- MTU digital throttle control station
- Air conditioning vent
- White Star compass
- Horn switch
- Raymarine G-Series repeater screens (2)
- GME 40G MHz EPIRB
- Zodiac Open Sea Life Rafts (2)

Master Stateroom

- Master stateroom is located on the main deck forward and is full beam.
- King walk around
- Large windows forward, port, and starboard with electronic blinds
- Retractable sunroof with electronic blinds
- Vanity
- Lighting under bed frame
- TV concealed in mirror
- Direct TV/HD/DFVR
- Yamaha IPOD docking station
- Sentry safe
- Large mirrored closets in entrance way
- En suite with large shower and private enclosed head with bidet
- Double sink

Companionway - Lower deck

- Miele T8005 Touchtronic Washer
- Miele W3035 Touchtronic Dryer

Twin Guest Stateroom - Below deck forward

- Twin Guest beds
- Carpet
- Reading lamps

- Blackout blinds
- En Suite with sit down shower
- Closet
- Direct TV/HD
- Yamaha DVD receiver DRX730
- IPOD docking station
- Drawer storage under beds
- TV in mirror

Twin Guest Stateroom-Below deck aft

- Twin beds
- Reading lights
- Samsung TV
- Climate controls
- En Suite with bench shower
- Closet
- Direct TV HD
- IPOD docking station

Deck/Hull

Aft Deck:

- Hard top offers shade to complete aft deck
- Engine room access via starboard door
- Flybridge access via port door
- U-shaped seating
- Telescopic gangway
- Stairs to port & starboard accessing swim platform

Foredeck:

- Sunpads
- (2) Lofrans windlass Vertical Ercole
- Enormous storage area
- Easy access to chain locker

Deck Equipment:

- GRP gates for access to swim platform
- Electro hydraulic stainless and teak swim ladder
- (2) Anchors, 300 lbs. each

- (2) Reversible anchor windlasses w/ integrated warping head
- (2) electric 2,500 W, warping heads
- Chain locker fitted with drainage system
- Gorgeous teak decks throughout - all recently refinished.
- Stainless steel protection at bow anchor areas
- Stainless steel rubbing strake for bow area hull
- Stainless steel rubbing strakes on exhaust plenums
- (4) Underwater lights Ocean LED

Garage

- Jet ski launching system
- Novurania DL430 with 60 hp Yamaha four stroke
- Yamaha FX1800AKA Jet Ski

Engine Room

- A-Sea power converter Model AC365-3
- MasterVolt Mass 24/75C auto battery charger
- ABER 1225 charger units
- HydroJet autoclave water pressure units
- Dometic air conditioners (1 in engineer's space & 1 in engine room)
- Aqua-Matic
- 4 chiller compressor system
- ABT/TRAC 50 hp Bow Thruster
- ABT/TRAC 50 hp Stern Thruster
- American Bow Thruster/TRAC hydraulic zero speed fin stabilizers
- SeaRecovery 1800-2 watermaker with remote touch screen and freshwater flush system
- Seamless transfer electrical system
- Engine, gear box, and generator oil change system
- Ozone treatment system for fresh water system

Crew

- Miele oven/microwave
- Miele T8005 Touchtronic dryer
- Miele W3033 Touchtronic washer
- Sink
- Sub Zero 700 BC refrigerator - drawer style
- Sub Zero freezer - drawer style
- Liebherr freezer (large)
- L-shaped dinette
- Cameras (6) for viewing deck, engine room, shaft

- Single berth cabin to starboard with en suite and shower
- Bunk crew cabin to port
- Single berth cabin with pulman forward
- Head with shower to port forward

Accommodations for 5 crew total.

Fire System

- Centralized Kidde automatic firefighting system
- Sea water hoses
- Portable extinguishers in all rooms
- Smoke detectors in engine room, afterpeak and all cabins and upper deck areas
- High temperature detectors in engine room and afterpeak

Electrical System

- (2) 55 kw gensets, 220 VAC, 60 Hz, 3 phase (forward: 1073 hrs, aft: 1092)
- (2) 220V, 100A, 60 Hz, 3 phase shore connection
- (2) Frequency converters ASEA 72KVA with dedicated A/C in technical area
- 220/110 VAC 60 Hz for accommodation and user spaces main lighting
- 24v for small users, visual signaling, electronic equipmnet and emergency lighting

Audio Visual Equipment

Salon

- Samsung 50" Plasma TV
- Samsung 40" LED TV
- Denon A/V receiver
- DirecTV US SAT receiver
- (5) speaker surround sound system w/ subwoofer
- 1 pair of zone speakers over dining area
- Apple MacMini hard drive
- Apple TV
- Apple Air Port Extreme
- Apple iPad with docking station
- (1) Hi-Fi system, home theatre kit with tuning amplifier CD/DVD player, 5 speakers and subwoofer w/ connection in cockpit and flybridge

Owner Cabin:

- (1) Samsung 40" LED TV concealed as mirror
- YAmaha AV receiver
- DirecTV US SAT receiver
- (5) speaker surround system with subwoofer
- Apple TV
- Apple iPod Touch with docking station
- (1) Hi Fi system, CD/DVD player

Starboard Guest Cabin

- (1) compact stereo, 2 speakers
- (1) Samsun 26" LED TV
- Yamaha A/V receiver
- DirecTV US SAT receiver
- Apple TV
- Apple iPod Touch with docking station

Port Guest Cabin

- (1) compact stereo, 2 speakers
- (1) Samsun 19" LED TV
- Yamaha A/V receiver
- DirecTV US SAT receiver
- Apple TV
- Apple iPod Touch with docking station

Starboard VIP Cabin

- (1) compact stereo, 2 speakers
- (1) Samsung 32" LED TV
- Yamaha AV receiver
- DirecTV US SAT receiver
- Apple TV
- Apple iPod Touch with docking station

Port VIP Cabin

- (1) compact stereo, 2 speakers
- (1) Samsung 26" LED TV
- Yamaha AV receiver
- DirecTV US SAT receiver
- Apple TV
- Apple iPod Touch with docking station

Flybridge:

- Samsung 37" LED TV

- Denon AV receiver
- DirecTV US SAT receiver
- (5) speaker surround sound system with subwoofer
- 2 zone speakers over dining area
- Apple TV
- Apple iPod Touch with docking station

Aft Deck

- Zone 2 controlled from salon system
- (4) overhead speakers
- Apple iPod Touch with docking station

Foredeck

- Speakers connected to Salon set w/ separate controls

Wheelhouse

- Radio w/ CD player, 2 speakers

Captain's Cabin

- Samsung 19" LED TV
- DirecTV US SAT receiver

Crew Mess

- (2) Samsung 22" LED TVs (TV and CCTV monitor)
- Yamaha AV receiver
- DirecTV US SAT receiver
- Apple TV
- Apple iPod Touch with docking station

Port Crew Cabin

- Samsung 19" LED TV
- DirecTV US SAT receiver
- Forward Crew Cabin
- Samsung 19" LED TV
- DirecTV US SAT receiver

Classification

RINA Classification

Исключения

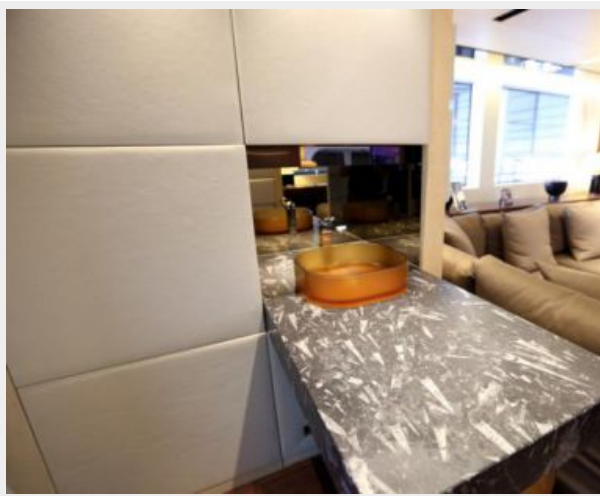
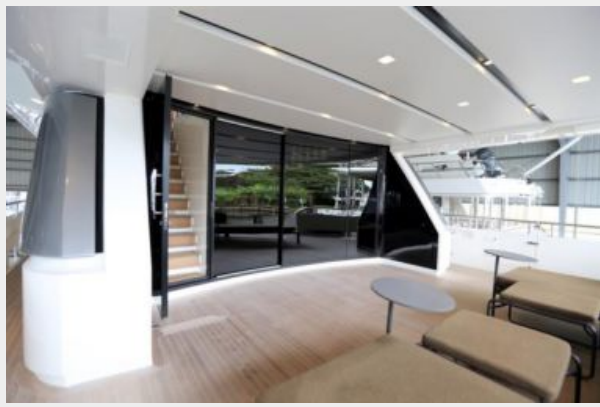
При продаже яхты исключаются личные вещи владельца.

Отказ от ответственности

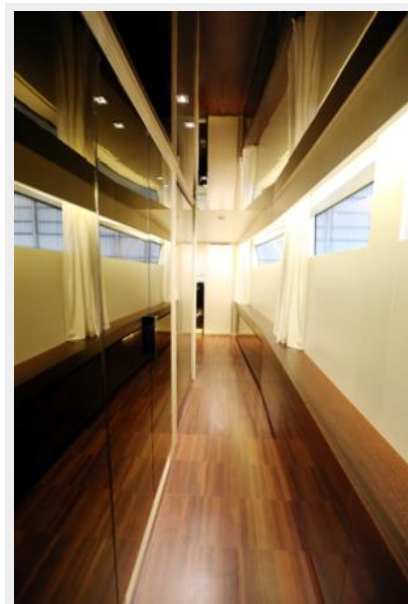
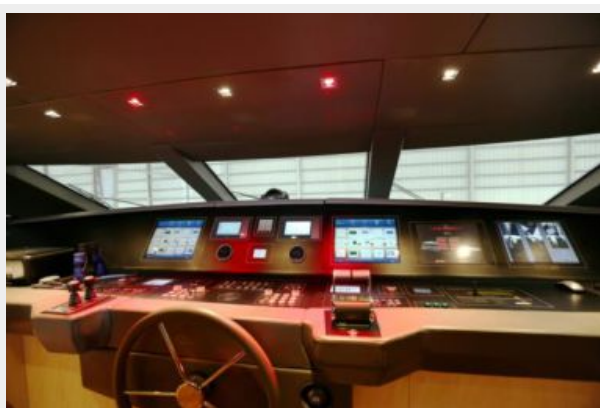
Компания предоставляет описание судна или яхты добросовестно, но не может гарантировать точность этой информации, а также не ручается за техническое состояние. Покупатель должен проинструктировать своих агентов или оценщиков исследовать представленную информацию более подробно, по собственному желанию. Продажа судна или яхты, изменение цены или снятие с продажи будет происходить без предварительного уведомления.

ФОТОГРАФИИ

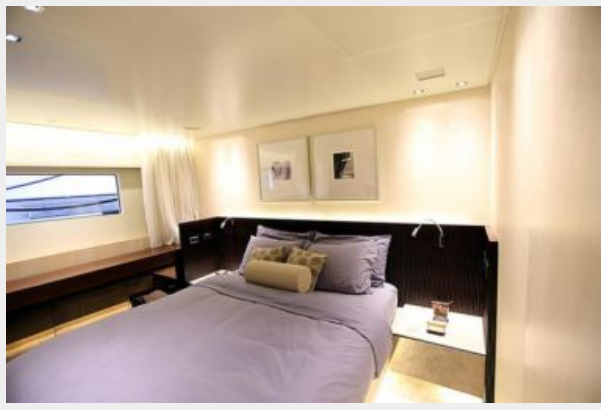
























КОНТАКТЫ

Андрей Шестаков (Andrey Shestakov) – ведущий яхтенный брокер отдела продаж яхт и судов компании Shestakov Yacht Sales Inc. Официальный представитель Shestakov Yacht Sales Inc. для русскоговорящих клиентов в центральном офисе компании в Майами/Форт Лодердейл/Флорида/США.

Контактная информация

Email: andrey@shestakovyachtsales.com

Web: shestakovyachtsales.com

Телефоны

Краснодарский край: **+7(918)465-66-44**

США, Майами, Флорида: **+1(954)274-4435**

Время работы

Понедельник – Суббота: **9:00 - 21:00**
EDT

Воскресенье: **Закрито**

Адрес



Harbour Towne Marina, 850 NE 3rd St,
STE 213, Dania, FL 33004