

SCOTCH MIST — ENDEAVOUR



Судостроитель: ENDEAVOUR

Длина общая: 40' 0" (12.19m)

Год постройки: 1981

Модель: Sloop

Цена: ЦЕНА ЯХТЫ ПО ЗАПРОСУ

Местонахождение: United States

Купить **Scotch Mist — ENDEAVOUR** а также выбрать подходящую вам яхту из нашего каталога яхт вам поможет опытный яхтенный брокер Андрей Шестаков. На сегодняшний день компания **Shestakov Yacht Sales Inc.** имеет большое количество яхт в собственном списке продаж, а также тесно сотрудничает со всеми крупными яхтенными производителями по всему миру.

Для того чтобы купить яхту **Scotch Mist — ENDEAVOUR** а также проконсультироваться по любому вопросу связанному с покупкой, продажей, чартером яхт позвоните по телефону **+7(918)465-66-44**.

ОГЛАВЛЕНИЕ

ОГЛАВЛЕНИЕ	2
ХАРАКТЕРИСТИКИ	3
Обзор	3
Основная информация	6
Размеры	6
Размещение	7
Корпус и палуба	7
Информация о двигателе	7
ФОТОГРАФИИ	8
КОНТАКТЫ	18
Контактная информация	18
Телефоны	18
Время работы	18
Адрес	18

ХАРАКТЕРИСТИКИ

Обзор

- RECENT PRICE REDUCTION
- "Scotch Mist" is a very well maintained, clean cruising vessel that was previously a Great Lakes Blue Water Cruiser. Current owners are Snowbirds who have winter cruised in the Bahamas from 2008-2017. They are now moving on to new adventures.
- Scotch Mist has received many upgrades and is easy to sail.
- She is cutter rigged with all 3 Sails roller furling, plus a colorful spinakker w/dousing sock.
- She has a fresh coat of MarPro gold Ablative bottom paint (over 5 layers of barrier coat) and 5 coats of Cetol on the exterior teak.
- Perkins 4108 diesel with 3012 hrs, Dual racor filters, new fuel tank
- Raymarine C80 chartplotter, Radar, Autopilot
- SSB and modem for weather fax and email
- Watermaker
- Solar panels, Wind Generator, 2 invertors
- RIB dingy on Davits
- Centercockpit with 2 cabin, 2 head layout
- CLEAN and WELL EQUIPPED!
- ACCOMMODATIONS
- 2 Stateroom/2 Head Layout, sleeps 6, Salon settee converts to berth
- Beautiful teak interior cabinets and bulkheads
- Parquet floor
- Nicely upholstered settees, storage behind and under
- Settees on each side of salon with centerline drop leaf dining table
- Galley to port aft of companionway
- Forward facing nav desk to starboard followed by long passageway leading to master cabin aft
- Custom tool lockers in passageway just opposite the engine room access doors
- Awartship master berth with side seat, cabinets and ensuite head and shower
- Large V berth forward with filler
- Dual access head and shower forward
- Tremendous provisioning room throughout
- GALLEY
- Well equipped U shaped galley tucked aft from companionway
- Force 10 Propane gimballled 3 burner stove and oven (2009)
- (2) 20lb Fiberglass propane tanks in lazerette
- Magma party size Propane BBQ with sunbrella cover (2010)
- (1) 10lb aluminum propane tank rail mounted with cover, re-certified (2015)
- 12V safety cutoff valve
- Dual SS sinks
- Quality Water Works Watermaker 10 gph with 110V pump

- H/C Pressure water system
- SeaGull drinking water filter
- Waeco Super cold machine Top loading Refrigeration and Freezer system with raw water pump (2001), Waeco VD 150 large Evaporator (2001)
- Teak cabinets and dish storage racks
- Includes all dishes
- Large Pantry in Salon
- 3 Large drawers under settee for provisions and Under drawer storage
- DECK EQUIPMENT
- Simpson Lowrance Sea Wolf Electric Windlass for chain or rode
- SS double anchor rollers
- 44# Delta Lewmar Anchor
- 35# CQR Anchor with shackle
- 35# Danforth type anchor
- SS pulpit anchor storage bracket
- 150' 3/8 Hi test chain 35' 3/8 chain and 150' rode (2002)
- SS anchor swivel for 3/8 chain and 5/16 chain
- Anchor snubber bolt at waterline for comfortable anchoring
- Harken blocks with swivels
- 42" Dingy Davits with (5:1) pulley system, 1" SS tubing (2004)
- SS dingy motor lift (5:1) pulley on wind generator support pole
- C10X Caribe RIB dingy - new chaps (2016)
- Honda 15hp 4 stroke outboard (spare prop and carb)
- Cockpit Enclosure
- Sunbrella cockpit cushions
- (2) flip chairs
- Folding cockpit table
- Edson 2 cup holder in cockpit
- Teak boarding ladder
- H/C Deck shower
- Sun shower
- Wind scoop
- Solar vents
- Deck prisms
- Opening hatches
- Jerry jugs
- Taylor made fenders
- ELECTRICAL
- KISS wind Generator, 15 amps output at 20 knts
- (2) 100 watt Siemens Solar panels, 13 amps out in full sun (2001)
- Flexcharge Solar controller (2005)
- Honda portable 2000 watt 4 stroke gasoline generator (2003)
- Silver Bullet, 100 amp Alternator
- Heart Interface, Link 2000R alternator charge controller wth LCD monitor

- Heart Interface, Pathmaker 200 amp automatic 3 bank battery combiner (2003)
- Mariner 30 amp 3 bank battery charger
- 20 amp 2 bank battery charger (2000)
- Victor 600 Watt Invertor
- 300 Watt Sina Invertor
- (4) Trojan 6 volt Deep Cell batteries
- 715 CA Deep Cell Starting battery
- 12V 115 AH Deep Cycle auxiliary radio battery
- shore power cord
- (2) 110V , 15 amp male to female plug adapters
- MECHANICAL
- Perkins 4108 with 3012 hrs
- Dual Racor filter system
- New fuel tank (2004)
- Alge-X magnetic In-line Fuel filter (2003)
- BAJA Hand held fuel filter
- Watermaker 10 gph
- (2) Jabsco manual marine toilets
- 35 gal Holding tank
- Jabsco 6.8 GPH bilge pump
- Jabsco automatic shower pump
- Shure-flo 3.3 GPH, 45 PSI automatic water pressure pump (2000)
- Shure-flo Accumulator Tank (2004)
- Custom tool storage in passageway drawers
- NUMEROUS SPARES... alternator, pumps, starter, filters, electrical, etc.
- Equipment Manuals
- SAILS AND RIGGING
- Cutter rigged, both roller furling
- External mounted Main furling system
- Mast steps
- 573 sq ft 150% Genoa (2012) on roller furler
- 315 sq ft reconditioned Roller Furling mainsail, new sacrificial cover (2012)
- 172 sq ft reconditioned roller furling Yankee, new sacrificial cover (2012)
- Multi colored spinnaker w/ snuffer
- Boom kicker 4:1 vang
- 6:1 Mainsheet with cam cleat
- 4:1 boom preventer
- (2) 44# Lewmar 2 speed ST winches
- (2) 30# Lewmar 2 speed ST winches
- (2) 24# Lewmar dual 2 speed winches
- (1) Lewmar 7# winch
- Barlow ratcheting winch handle
- (3) winch handles
- ELECTRONICS AND NAVIGATON

- Raymarine C80 Chartplotter at Helm
- E charts for Florida, Bahamas, Turks and Caicos
- Raymarine Radar (display on chartplotter)
- Raymarine ST7001 Autopilot (2004)
- Raymarine 400G Course Computer
- Raymarine type 2, 45,000 lb rotary drive with chain drive sprocket for gear sector on rudder shaft (2004)
- ICOM M402 VHF wih DSC (2002)
- Yaesu SSB Radio, Ham and Marine band transmit and receive, 100 watt output, transceiver, voice, Weather FAX & Email (2001)
- SGC 230 automaric antena tuner
- SGC PTC-II-e Radio frequency Modem for E mail & Weather Fax
- Akigawa PM-4HV SWR & Power out meter
- Garmin model 180 Chartplotter at Nav Desk, (2) G-Chart cartridges
- Garmin model 75 handheld GPS
- Danforth 9" compass
- Davis Hand bearing compass
- Standard Horizon HX460S, submersible, handheld VHF (2004)
- Raytheon ST60 close hauled wind direction/speed indicator (2001)
- Data marine SL-100 Knot/speed indicator
- Horizon depth sounder and Standard transducer combo (2003)
- Numerous charts and guide books
- DISCLAIMER
- The Company offers the details of this vessel in good faith but cannot guarantee or warrant the accuracy of this information nor warrant the condition of the vessel. A buyer should instruct his agents, or his surveyors, to investigate such details as the buyer desires validated. This vessel is offered subject to prior sale, price change, or withdrawal without notice.

Основная информация

Тип судна: Sloop

Подкатегория: Cutter

Модельный год: 1981

Год постройки: 1981

Страна: United States

Размеры

Длина общая: 40' 0" (12.19m)

Размещение

Всего кают: 2

Корпус и палуба

Материал корпуса: Fiberglass

Информация о двигателе

Двигатели: 1

Производитель: Perkins

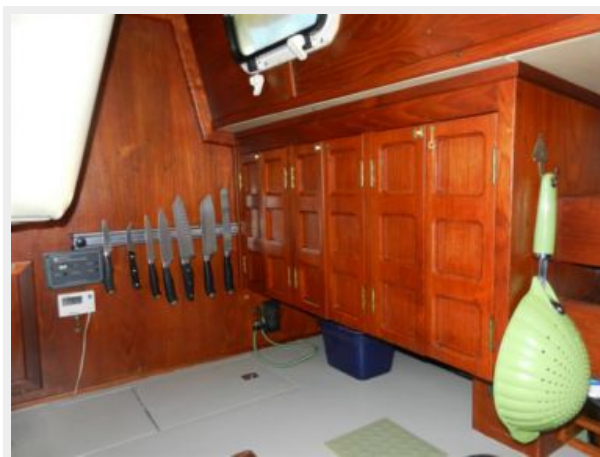
Модель: 4108

Тип топлива: Diesel

ФОТОГРАФИИ



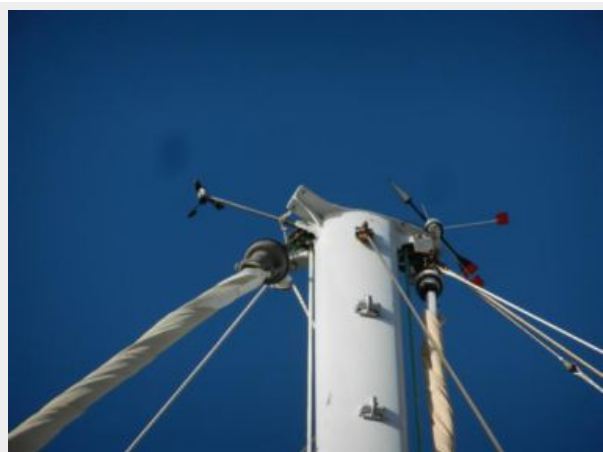


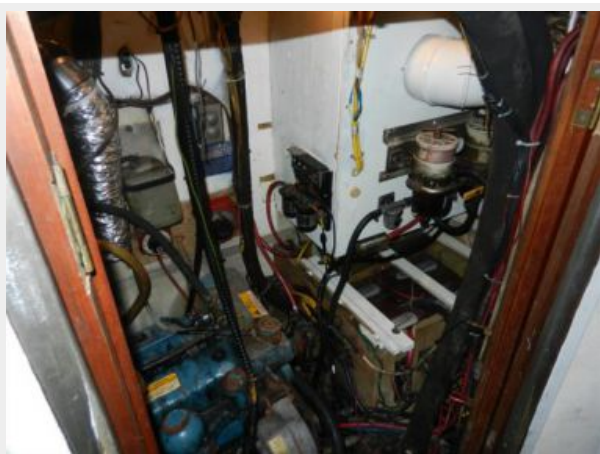
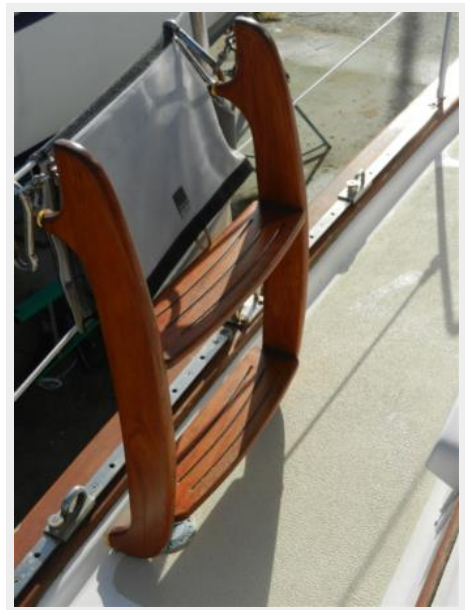


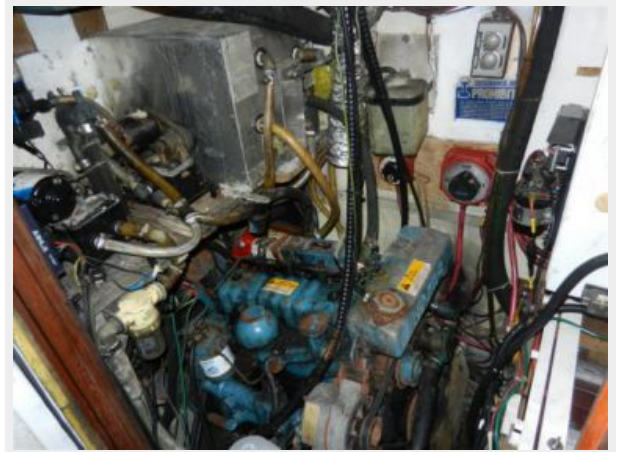


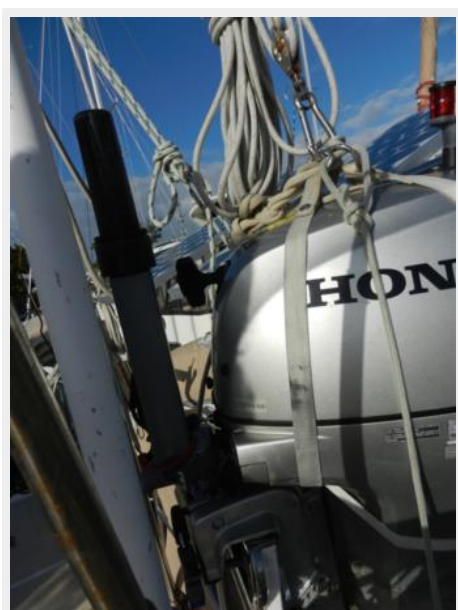












КОНТАКТЫ

Андрей Шестаков (Andrey Shestakov) – ведущий яхтенный брокер отдела продаж яхт и судов компании Shestakov Yacht Sales Inc. Официальный представитель Shestakov Yacht Sales Inc. для русскоговорящих клиентов в центральном офисе компании в Майами/Форт Лодердейл/Флорида/США.

Контактная информация

Email: andrey@shestakovyachtsales.com

Web: shestakovyachtsales.com

Телефоны

Краснодарский край: **+7(918)465-66-44**

США, Майами, Флорида: **+1(954)274-4435**

Время работы

Понедельник – Суббота: **9:00 - 21:00**
EDT

Воскресенье: **Закрито**

Адрес



Harbour Towne Marina, 850 NE 3rd St,
STE 213, Dania, FL 33004