

MZ TUMBLEWEED — TAYANA



Builder: TAYANA

LOA: 37' (11.28m)

Model: Cruising Sailboat

Our experienced yacht broker, Andrey Shestakov, will help you choose and buy a yacht that best suits your needs **Mz Tumbleweed — TAYANA** from our catalogue. Presently, at Shestakov Yacht Sales Inc., we have a wide variety of yachts available on our sale's list. We also work in close contact with all the big yacht manufacturers from all over the world.

If you would like to buy a yacht **Mz Tumbleweed — TAYANA** or would like help answering any questions concerning purchasing, selling or chartering a yacht, please call **+1(954)274-4435**

TABLE OF CONTENTS

TABLE OF CONTENTS	2
SPECIFICATIONS	3
Overview	3
Basic Information	6
Dimensions	6
Accommodations	6
Hull and Deck Information	6
Engine Information	6
PHOTOS	7
CONTACTS	15
Contact details	15
Telephones	15
Office hours	15
Address	15

SPECIFICATIONS

Overview

- **REDUCED FOR IMMEDIATE SALE! As-is, Where-Is. GREAT OPPORTUNITY**
- **Rare Pilothouse version of the classic Robert Perry design**
- **SERIOUSLY LOADED FOR EXTENDED CRUISING**
- **Strong and seaworthy with fully protected interior helm**
- **Very nice conditon**
- Beautiful teak interior joinery
- New oversized chainplates 2016
- Rigging with staloc fittings
- Cutter rigged - 5 sail inventory
- Freshly painted hull and deck
- Bottom paint has 2 barrier coats and fresh ablative paint
- New fuel and water tanks (2016)
- Reliable Perkins 4108 diesel engine
- NO Teak decks
- Rebuilt bow sprit
- Rochna anchor, 300' chain, Lofrans electric windlass - heavy ground tackle
- Pur Survivor Watermaker
- Onan Generator
- Air conditioning
- Solar panels and charger (2016)
- AIS, SSB, Radar, Chartplotter
- (2) Autopilots
- Liferaft, needs recert
- Garber drain plug
- Many upgrades...
- **ACCOMODATIONS**
- Entering the enclosed pilothouse from the cockpit you will find the helm station to starboard and navigation desk and seat to port. Down two steps is the main cabin with a quarterberth to port, storage drawers to starbaord. The salon has an L shaped settee with a teak dining table, bookshelves, bulkhead mounted TV and generous storage under settee.
- The midship galley is to starboard and has a double SS sink, 3 burner Force 10 stove and oven, top and front loading refrigeration system and abundant cabinet, drawers and provision space.
- The passageway leading forward has the large head and shower to starboard and hanging locker opposite.
- Large V berth with cabinets and overhead opening hatch.
- Teak and holly sole. T
- Teak joinery thoughtout
- SS opening ports and dorade vents provide good ventilation.

- Air conditioning
- 12V/110 Refrigeration system 2015
- HULL AND DECK
- The vessel has undergone a full paint job which has been done in 3 seasons
- bottom epoxied and ablative paint (every season)
- hull painted with awlgrip, deck painted - only the cabin top remains to be completed
- Bowsprit rebuilt with new wood and fibreglassed
- Lofrans Tigres 1500 electric windlass (2012), controls at pilothouse and windlass
- 55# Rochna anchor with 300' chain (2012)
- 44# Plow type anchor
- Waterline snubber
- Garber drain plug
- Liferaft - needs certification
- 10' Zodiac dingy
- Tohatsu 5hp Outboard
- Dingy davits
- Custom SS Long Swim ladder that pivots at side gate and stores on deck
- Canoe stern
- Danforth stern anchor
- Horseshoe buoy
- (2) outboard mounts
- Solid SS stern rails
- Cockpit cushions
- Hinged teak doors lead to pilothouse
- 36' stanchions
- under stanchion bases and horn cleats replaced with glassed in Celtec blocks
- All new deck fills
- Wide walk arounds and great handrails on house and raised cabin top
- SS wire lifelines new (2012)
- Never had teak decks
- Tan bimini w/ shade panel
- MECHANICAL
- Excellent access to the engine from the floor boards in the pilothouse as well as the forward panel at the base of the steps
- Room for tool storage behind helm seat
- Perkins 4108
- New Prop shaft, Cutlass bearing and stuffing box 2012, spare shaft
- 3 blade prop
- Dual Racor filters
- NEW 75 gal fuel tank and 65 gal (2 tanks SS) water tanks 2013
- New hoses and clamps, new Marlon diversion valve 2013
- Alternator rebuilt and spare Voltage regulator and spare Pur Survivor Watermaker
- ELECTRICAL
- Onan Genset

- NEW (2) 160 watt solar panels (2016) runs refrigeration at anchor
- NEW Windy Nation Solar controller (2016)
- NEW 12V electric panel
- 1000 W Invertor
- Honda 2000 Generator
- (4) Trojan batteries (2014)
- (1) Start battery(1) Windlass battery
- Alternator and spare
- SAILS AND RIGGING
- Owner says she runs great under Staysail and Main!
- NEW 6 Oversized Chain plates 2016
- Standing rigging 2002
- Staloc fittings
- 5 sail inventory including Spinnaker
- Schaeffer 2100 Roller furler
- Staysail with self tending club footed boom
- Downwind pole
- New mainsail cover
- Sacrificial covers 2014
- (2) Lewmar 40ST winches
- (1) Lewmar 40 ST winch on pilothouse top
- (1) Lewmar 16 ST winch
- Traveller on pilothouse
- (3) Lewmar 16 winches on mast
- ELECTRONICS AND NAVIGATION
- Garmin GPS 441s
- Garmin GPS Map 76Cx
- Raymarine depth
- (2) Autopilots, Autohelm wheel pilot and linear drive
- Compass
- Furuno radar
- Sirius Satellite radio
- AIS
- SSB
- Horizon VHF
- Handheld VHF
- no wind, speed, direction
- DISCLAIMER
- The Company offers the details of this vessel in good faith but cannot guarantee or warrant the accuracy of this information nor warrant the condition of the vessel. A buyer should instruct his agents, or his surveyors, to investigate such details as the buyer desires validated. This vessel is offered subject to prior sale, price change, or withdrawal without notice.

Basic Information

Category: Cruising Sailboat

Sub Category: Pilothouse Cutter

Model Year: 1983

Dimensions

LOA: 37' (11.28mm)

Accommodations

Total Cabins: 2

Hull and Deck Information

Hull Material: Fiberglass

Engine Information

Engines: 1

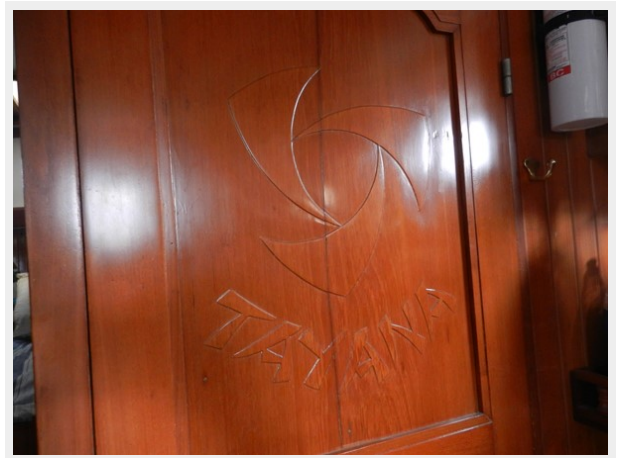
Manufacturer: Perkins

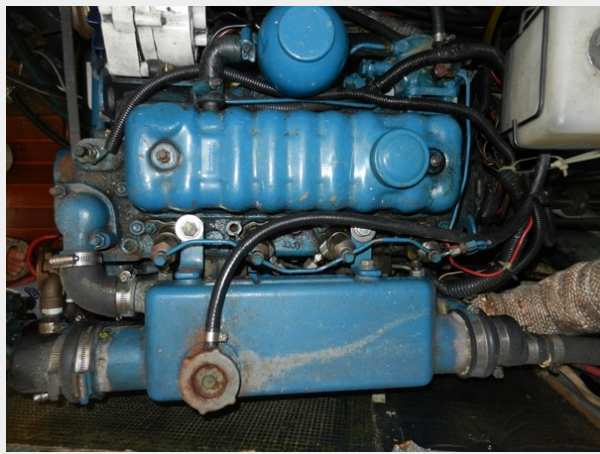
Fuel Type: Diesel

PHOTOS

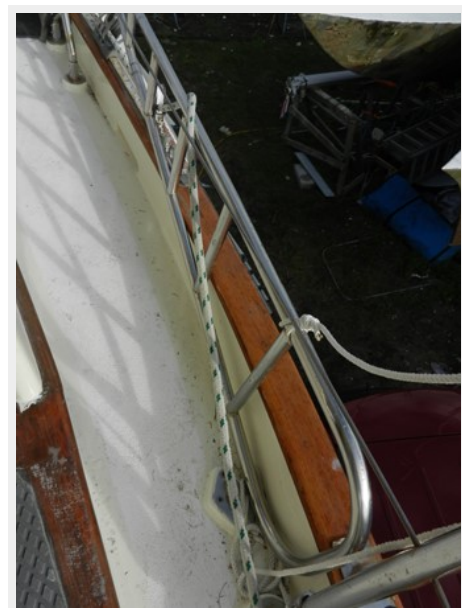
















CONTACTS

Andrey Shestakov, leading yacht broker of the sales department of Shestakov Yacht Sales Inc. Shestakov Yacht Sales Inc., the official representative of the Miami/Fort Lauderdale FL headquarters.

Contact details

Email: andrey@shestakovyachtsales.com

Web: shestakovyachtsales.com/en/

Telephones

USA: +1(954)274-4435

Office hours

Monday – Saturday: **9:00 - 21:00** EDT

Sunday: **closed**

Address



Harbour Towne Marina, 850 NE 3rd St,
STE 213, Dania, FL 33004