

MZ TUMBLEWEED — TAYANA



Судостроитель: TAYANA

Длина общая: 37' (11.28m)

Модель: Крейсерская яхта

Купить **Mz Tumbleweed — TAYANA** а также выбрать подходящую вам яхту из нашего каталога яхт вам поможет опытный яхтенный брокер Андрей Шестаков. На сегодняшний день компания **Shestakov Yacht Sales Inc.** имеет большое количество яхт в собственном списке продаж, а также тесно сотрудничает со всеми крупными яхтенными производителями по всему миру.

Для того чтобы купить яхту **Mz Tumbleweed — TAYANA** а также проконсультироваться по любому вопросу связанному с покупкой, продажей, чартером яхт позвоните по телефону **+7(918)465-66-44**.

ОГЛАВЛЕНИЕ

ОГЛАВЛЕНИЕ	2
ХАРАКТЕРИСТИКИ	3
Обзор	3
Основная информация	6
Размеры	6
Размещение	6
Корпус и палуба	6
Информация о двигателе	6
ФОТОГРАФИИ	7
КОНТАКТЫ	15
Контактная информация	15
Телефоны	15
Время работы	15
Адрес	15

ХАРАКТЕРИСТИКИ

Обзор

- **REDUCED FOR IMMEDIATE SALE! As-is, Where-Is. GREAT OPPORTUNITY**
- **Rare Pilothouse version of the classic Robert Perry design**
- **SERIOUSLY LOADED FOR EXTENDED CRUISING**
- **Strong and seaworthy with fully protected interior helm**
- **Very nice conditon**
- Beautiful teak interior joinery
- New oversized chainplates 2016
- Rigging with staloc fittings
- Cutter rigged - 5 sail inventory
- Freshly painted hull and deck
- Bottom paint has 2 barrier coats and fresh ablative paint
- New fuel and water tanks (2016)
- Reliable Perkins 4108 diesel engine
- NO Teak decks
- Rebuilt bow sprit
- Rochna anchor, 300' chain, Lofrans electric windlass - heavy ground tackle
- Pur Survivor Watermaker
- Onan Generator
- Air conditioning
- Solar panels and charger (2016)
- AIS, SSB, Radar, Chartplotter
- (2) Autopilots
- Liferaft, needs recert
- Garber drain plug
- Many upgrades...
- ACCOMODATIONS
- Entering the enclosed pilothouse from the cockpit you will find the helm station to starboard and navigation desk and seat to port. Down two steps is the main cabin with a quarterberth to port, storage drawers to starbaord. The salon has an L shaped settee with a teak dining table, bookshelves, bulkhead mounted TV and generous storage under settee.
- The midship galley is to starboard and has a double SS sink, 3 burner Force 10 stove and oven, top and front loading refrigeration system and abundant cabinet, drawers and provision space.
- The passageway leading forward has the large head and shower to starboard and hanging locker opposite.
- Large V berth with cabinets and overhead opening hatch.
- Teak and holly sole. T
- Teak joinery thoughtout
- SS opening ports and dorade vents provide good ventilation.

- Air conditioning
- 12V/110 Refrigeration system 2015
- HULL AND DECK
- The vessel has undergone a full paint job which has been done in 3 seasons
- bottom epoxied and ablative paint (every season)
- hull painted with awlgrip, deck painted - only the cabin top remains to be completed
- Bowsprit rebuilt with new wood and fiberglassed
- Lofrans Tigres 1500 electric windlass (2012), controls at pilothouse and windlass
- 55# Rochna anchor with 300' chain (2012)
- 44# Plow type anchor
- Waterline snubber
- Garber drain plug
- Liferaft - needs certification
- 10' Zodiac dingy
- Tohatsu 5hp Outboard
- Dingy davits
- Custom SS Long Swim ladder that pivots at side gate and stores on deck
- Canoe stern
- Danforth stern anchor
- Horseshoe buoy
- (2) outboard mounts
- Solid SS stern rails
- Cockpit cushions
- Hinged teak doors lead to pilothouse
- 36' stanchions
- under stanchion bases and horn cleats replaced with glassed in Celtec blocks
- All new deck fills
- Wide walk arounds and great handrails on house and raised cabin top
- SS wire lifelines new (2012)
- Never had teak decks
- Tan bimini w/ shade panel
- MECHANICAL
- Excellent access to the engine from the floor boards in the pilothouse as well as the forward panel at the base of the steps
- Room for tool storage behind helm seat
- Perkins 4108
- New Prop shaft, Cutlass bearing and stuffing box 2012, spare shaft
- 3 blade prop
- Dual Racor filters
- NEW 75 gal fuel tank and 65 gal (2 tanks SS) water tanks 2013
- New hoses and clamps, new Marlon diversion valve 2013
- Alternator rebuilt and spare Voltage regulator and spare Pur Survivor Watermaker
- ELECTRICAL
- Onan Genset

- NEW (2) 160 watt solar panels (2016) runs refrigeration at anchor
- NEW Windy Nation Solar controller (2016)
- NEW 12V electric panel
- 1000 W Invertor
- Honda 2000 Generator
- (4) Trojan batteries (2014)
- (1) Start battery(1) Windlass battery
- Alternator and spare
- SAILS AND RIGGING
- Owner says she runs great under Staysail and Main!
- NEW 6 Oversized Chain plates 2016
- Standing rigging 2002
- Staloc fittings
- 5 sail inventory including Spinnaker
- Schaeffer 2100 Roller furler
- Staysail with self tending club footed boom
- Downwind pole
- New mainsail cover
- Sacrificial covers 2014
- (2) Lewmar 40ST winches
- (1) Lewmar 40 ST winch on pilothouse top
- (1) Lewmar 16 ST winch
- Traveller on pilothouse
- (3) Lewmar 16 winches on mast
- ELECTRONICS AND NAVIGATION
- Garmin GPS 441s
- Garmin GPS Map 76Cx
- Raymarine depth
- (2) Autopilots, Autohelm wheel pilot and linear drive
- Compass
- Furuno radar
- Sirius Satellite radio
- AIS
- SSB
- Horizon VHF
- Handheld VHF
- no wind, speed, direction
- DISCLAIMER
- The Company offers the details of this vessel in good faith but cannot guarantee or warrant the accuracy of this information nor warrant the condition of the vessel. A buyer should instruct his agents, or his surveyors, to investigate such details as the buyer desires validated. This vessel is offered subject to prior sale, price change, or withdrawal without notice.

Основная информация

Тип судна: Крейсерская яхта

Подкатегория: Катер с рулевой рубкой

Модельный год: 1983

Размеры

Длина общая: 37' (11.28mm)

Размещение

Всего кают: 2

Корпус и палуба

Материал корпуса: Fiberglass

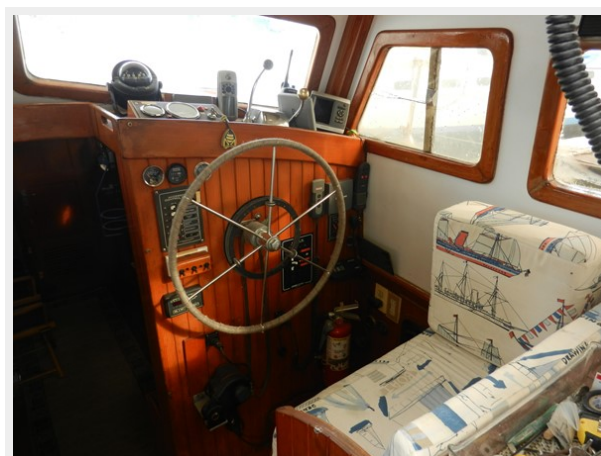
Информация о двигателе

Двигатели: 1

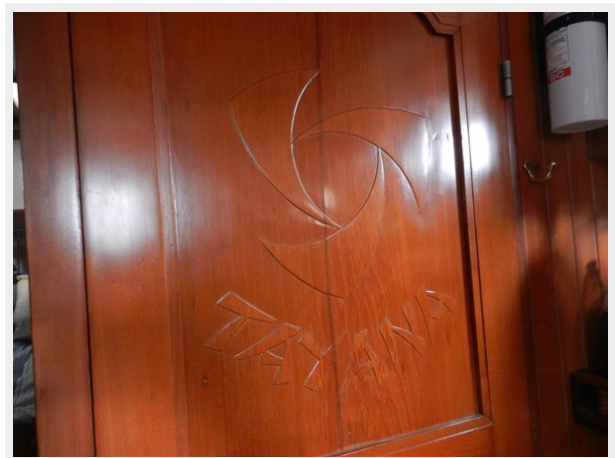
Производитель: Perkins

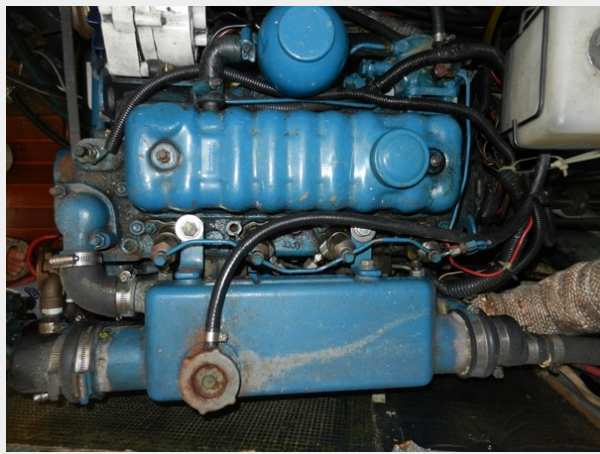
Тип топлива: Diesel

ФОТОГРАФИИ

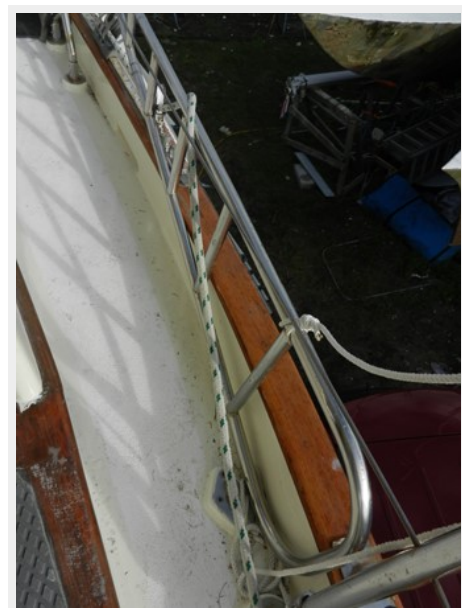
















КОНТАКТЫ

Андрей Шестаков (Andrey Shestakov) – ведущий яхтенный брокер отдела продаж яхт и судов компании Shestakov Yacht Sales Inc. Официальный представитель Shestakov Yacht Sales Inc. для русскоговорящих клиентов в центральном офисе компании в Майами/Форт Лодердейл/Флорида/США.

Контактная информация

Email: andrey@shestakovyachtsales.com

Web: shestakovyachtsales.com

Телефоны

Краснодарский край: **+7(918)465-66-44**

США, Майами, Флорида: **+1(954)274-4435**

Время работы

Понедельник – Суббота: **9:00 - 21:00**
EDT

Воскресенье: **Закрето**

Адрес



Harbour Towne Marina, 850 NE 3rd St,
STE 213, Dania, FL 33004