

LORBAS — CORBIN



Судостроитель: CORBIN

Год постройки: 1987

Модель: Катер с рулевой рубкой

Цена: ЦЕНА ЯХТЫ ПО ЗАПРОСУ

Местонахождение: United States

Длина общая: 39' 0" (11.89m)

Ширина: 12' 2" (3.71m)

Мин. осадка: 5' 7" (1.70m)

Купить Lorbас — CORBIN а также выбрать подходящую вам яхту из нашего каталога яхт вам поможет опытный яхтенный брокер Андрей Шестаков. На сегодняшний день компания Shestakov Yacht Sales Inc. имеет большое количество яхт в собственном списке продаж, а также тесно сотрудничает со всеми крупными яхтенными производителями по всему миру.

Для того чтобы купить яхту Lorbас — CORBIN а также проконсультироваться по любому вопросу связанному с покупкой, продажей, чартером яхт позвоните по телефону **+7(918)465-66-44**.

ОГЛАВЛЕНИЕ

ОГЛАВЛЕНИЕ	2
ХАРАКТЕРИСТИКИ	5
Обзор	5
Основная информация	5
Размеры	5
Размещение	5
Корпус и палуба	5
Информация о двигателе	6
ПОДРОБНОЕ ОПИСАНИЕ	7
Accommodations & Layout	7
Pilothouse and cockpit Instruments	7
Deck Equipment	8
Mechanical	9
Upgrades	9
Electrical	10
Sails & Rigging	10
Additional Equipment	11
Исключения	11
Отказ от ответственности	11
ФОТОГРАФИИ	12
39 Corbin Pilothouse	12
Lorbas at dock	12
Solar, Wind Gen, Davits, Custom enclosure	12
Cockpit helm	13
Helm instruments	13
Companionway entry	13
Pilothouse level	13
Pilothouse helm	14

Pilothouse desk	14
Nav desk and double quarter berth	14
Pilothouse settee and storage	14
Step down to Salon	14
Dining table	14
Port settee and basketweave locker doors	15
Port settee looking forward	15
Salon looking aft	15
Midship Galley	15
Abundant storage throughout	15
Storage behind settees	15
perfect for cans	16
Salon to forward cabin	16
Forward cabin	16
Double berth	16
Head and shower	17
side seat	17
Clean 30 hp Yanmar	17
Core samples!	17
Heavy duty bow pulpit and anchor rollers	18
NEWLY refinished deck!	18
Bow view	18
Port profile	18
Pilothouse level and dodger/bimini	19
Wide walk arounds	19
Deck before new nonskid	19
КОНТАКТЫ	20
Контактная информация	20
Телефоны	20

Время работы	20
Адрес	20

ХАРАКТЕРИСТИКИ

Обзор

PILOTHOUSE, VERY STRONG, WELL MAINTAINED AND WELL EQUIPPED! Bluewater canoe stern, flush deck, pilothouse and cockpit steering. READY TO CRUISE. "Lorbas" is a professionally finished 39 Corbin Pilothouse that has enjoyed the care and continual updates from long time owners of 23 years. Recent improvements include a removal of the old treadmaster non skid and resurfacing, reglassing, awlgripping and then Kiwi grip non skid applied in 2016. The 30hp Yanmar is very clean and has a new transmission and shaft in 2003. Additionally the fuel and water tanks have been replaced. New batteries in 2017. She is beautiful as well as extremely practical. She is equipped for comfortable cruising with solar, wind gen, Garmin GPS, Radar, AIS Receiver, Davits, Custom cockpit enclosure, many spares and extras. **She is in very good condition and should be given very careful consideration.**

Основная информация

Тип судна: Катер с рулевой рубкой

Подкатегория: Крейсерская яхта

Модельный год: 1987

Год постройки: 1987

Страна: United States

Размеры

Длина общая: 39' 0" (11.89m)

Ширина: 12' 2" (3.71m)

Мин. осадка: 5' 7" (1.70m)

Трапы: 54' 0" (16.46m)

Размещение

Всего кают: 2

Корпус и палуба

Материал корпуса: Fiberglass

Информация о двигателе

Двигатели: 1

Производитель: Yanmar

Модель: 3NM

Тип топлива: Diesel

ПОДРОБНОЕ ОПИСАНИЕ

Accommodations & Layout

- Entering from cockpit, the protected Pilothouse features a classic wood steering wheel, a large navigation station with beautiful inlaid wood compass rose desktop. The comfortable seat has a backrest that can be angled forward to accommodate a double quarterberth aft. To starboard is a single sea berth with plenty of storage behind and over. Facing aft and left of the companionway ladder is a door to the cavernous storage area under the cockpit with excellent access to steering quadrant, batteries, parts and equipment. Step down from the pilothouse into the galley and salon. Immediately to starboard is a huge double top loading refrigeration system with freezer. The galley features a double sink and large countertop, propane stove with oven/ broiler. Abundant storage for pots, pans, dishes and provisioning. The roomy main salon features a varnished teak center line table with drop leaves and storage, two facing settees with storage lockers behind and under. The head and shower are to starboard. The Master stateroom is a large double berth to starboard with side seat, opening hatch and storage lockers.
- Basketweave cabinet doors
- Solid hardwood oak cabin sole
- Force 10 propane cabin heater
- 12v lighting throughout
- 20" Flatscreen TV with DVD player
- 2 bulkhead mounted hurricane lamps and hanging lamp gives the interior a warm, inviting glow
- Plenty of natural light and ventilation from 5 overhead hatches with covers
- The head has a sink with shower faucet, manual rarritan head with Y-valve, holding tank with macerator
- There is a great deal of provisioning and storage room throughout the entire vessel

Pilothouse and cockpit Instruments

- PILOTHOUSE
- 2011 Garmin 441S GPS with Chartplotter and Depth Finder
- 2007 Furuno 1715 Radar with mast mounted Raydome
- Raymarine DSM Digital depth finder
- 2008 Raymarine Smart Autopilot with Rudder angle indicator
- 2013 AIS Receiver
- Kenwood T-50 HAM Radio with insulated backstay antenna and grounding plane
- Raymarine Bi-data knot and depth indicators
- Icom MC402 VHF radio with Masthead antenna
- Nobeltec charting system with laptop display and Lowrance 100 GPS
- Pioneer CD player with speakers in Pilothouse and Main salon

- Brass 4" Clock and Barometer/Tide indicator and 5" set in main salon
- COCKPIT
- 5" Ritchie Binnacle compass
- Brooks and Gatehouse Depth and knotmeter
- Icom RAM Mic VHF

Deck Equipment

- Heavy SS bow pulpit with double roller anchoring system
- Muir Electric Windlass
- Nordhill anchor with 40' chain and 150' 3 strand rope rode
- Delta anchor with 250' All chain rode
- Fortress FX 23
- Spare anchor
- Fisherman spare anchor
- Seawater washdown
- Double anchor lockers
- Yamaha 15HP 2 stroke Outboard engine
- Nissan 3.3HP Outboard
- Walker Bay Genesis RIB inflatable
- Bobstay
- Double lifelines and gates
- Midship cleats
- Deck storage box
- Reinforced dingy davit system (so outboard engine can remain mounted)
- Cockpit Dodger with side and aft handrails and opening center panel
- Bimini with Full 3 sided enclosure
- Bimini dodger/connector
- Covers for all overhead hatches
- Mainsail cover
- Outboard covers
- Antenna mast aft of cockpit
- Port and starboard mast safety pulpits
- Mast steps
- Propane
- Bar-B-Que on stern rail
- Stern boarding ladder
- 3 2013 Round type fenders
- Large deck shade awning
- 2 Dorade vents
- 2013 Cylinder type Fenders

Mechanical

- Engine located amidship with access through large panel in galley under sink and through removeable floor in pilothouse. Also excellent access to transmission,coupling,vibration reducer and shaft log through floor in pilothouse.
- 1987 30 hp Yanmar 3HM
- New Tranmission 2003
- New shaft 2003
- Steering ram rebuilt 2012
- Max prop
- (2) 30 gal each SS Fuel tanks, new 2010
- Vetus muffler
- Racor fuel filters
- Lestec 800's 100 Amps alternator with dual charge and Heart smart regulator
- 2011 hot water heater with engine heat exchanger and 110 V element
- (4) 30 gal each SS water tanks, new 2010
- PUR 35 Watermaker
- Spares and manuals

Upgrades

- In 2016, the Treadmaster deck was entirely removed. The deck was reinforced with additonal layers of fiberglass mat and then fiberglassed. The deck surface was then awlgrippd and then Kiwi Grip nonskid applied resulting in a fresh looking and practical surface.
- In 2002 the bottom was taken down to gel coat and Interlux Protect Barrier Coat was applied.
- Lorbas has been hauled for the unused season each year
- NEW in 2013
- Max-Prop feathering propellor
- Cutlass bearing
- Shaft and strut
- Coupling and drive saver
- Inside steering hydraulic pump
- AIS
- 4 6 Volt house bank batteries
- 4 12 Volt Engine starting batteries
- NEW in 2012
- Steering ram for hydraulic steering system rebuilt
- NEW in 2011
- Garmin 441S GPS/Chartplotter with all USA and Bahama chips
- NEW in 2010
- Force 10 Cabin heater

- Force 10 Stove and oven with broiler
- Propane system with 2 Xintex sniffers and 2 20# bottles
- Adler Barbour Refrigeration
- NEW in 2007
- Stainless steel fuel tanks
- NEW in 2006
- Hull and stripes painted with Signature epoxy paint

Electrical

- NEW 4 Six Volt batteries (2017) House bank
- NEW 4 12 Volt batteries (2017) Engine
- 2015 solar panel charging system
- Alrex 403 110 Watt wind generator
- Prosine 1800 watt Inverter and Link 10 control
- 12 Volt DC and 120 Volt AC shore power
- 50' 35 Amp cable
- Newmar 12-45 Automatic battery charger/converter
- Smart battery switch

Sails & Rigging

- Double spreader deck stepped mast
- Inner forestay
- Spinnaker track on mast
- Double backstay
- Furlex solid boom vang
- Furlex genoa furling system
- Storm trisail track
- Deck chainplates for running backstays
- Whisker pole
- Reaching strut
- 1 Barent #28 Self tailing primaries
- 2 Barent #27 Self tailing secondaries
- 2 Barent #10 Reefing winches on boom
- 2 Barent #22 Halyard winches on mast
- 2002 Quantum Full batten Main with Lazy jacks and (2) reefs
- 150% Genoa (heavy)
- 150% genoa (light)
- Storm jib
- Storm trisail
- Asymmetrical cruising chute

Additional Equipment

- 2 Buoy 'O Boy survival suits
- 2 inflatable life vests/harnesses
- Jack lines
- Bosun's chair
- Ditch bag
- First aid kit
- Pilothouse window covers
- cockpit helm chair
- 2 automatic Bilge pumps
- 2 Manual Bilge pumps
- 2 Spare fresh water pumps
- Spare Yamaha outboard motor prop
- Spare 3 blade Main engine prop
- Complete set of tools
- Boat hook, fenders, extra dock lines, flare kit

Исключения

При продаже яхты исключаются личные вещи владельца.

Отказ от ответственности

Компания предоставляет описание судна или яхты добросовестно, но не может гарантировать точность этой информации, а также не ручается за техническое состояние. Покупатель должен проинструктировать своих агентов или оценщиков исследовать представленную информацию более подробно, по собственному желанию. Продажа судна или яхты, изменение цены или снятие с продажи будет происходить без предварительного уведомления.

ФОТОГРАФИИ

39 Corbin Pilothouse



Lorbas at dock



Solar, Wind Gen, Davits, Custom enclosure



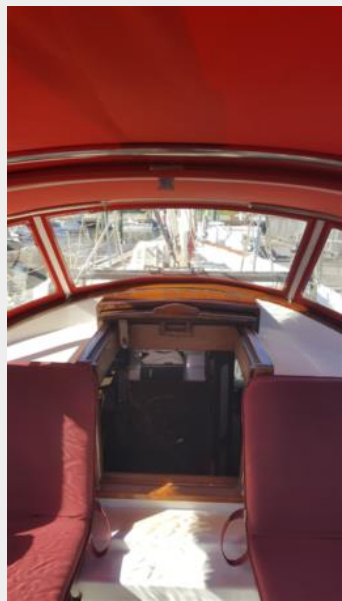
Cockpit helm



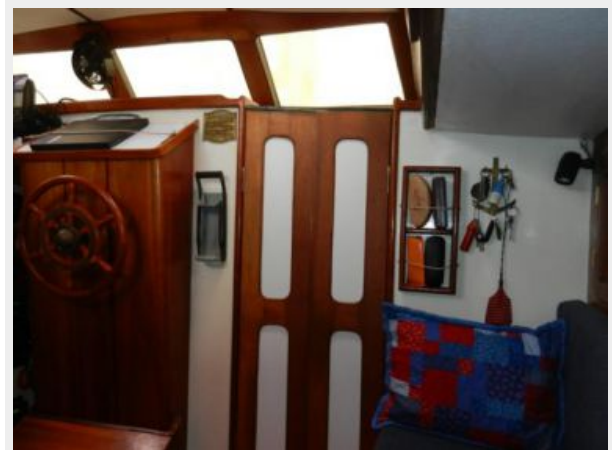
Helm instruments



Companionway entry



Pilothouse level



Pilothouse helm



Pilothouse desk



Nav desk and double quarter berth



Pilothouse settee and storage



Step down to Salon



Dining table



Port settee and basketweave locker doors



Port settee looking forward



Salon looking aft



Midship Galley



Abundant storage throughout



Storage behind settees



perfect for cans



Salon to forward cabin



Forward cabin



Double berth



side seat



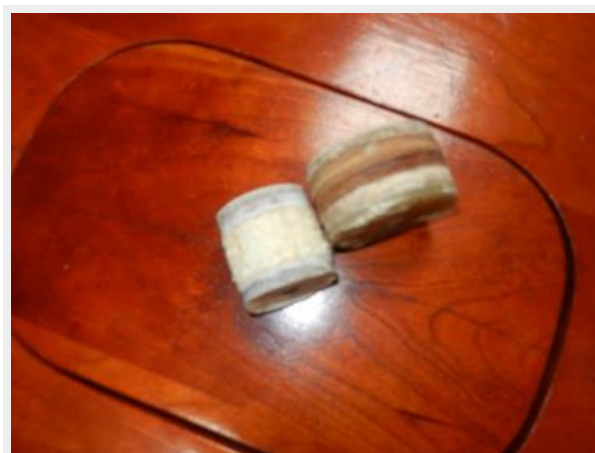
Head and shower



Clean 30 hp Yanmar



Core samples!



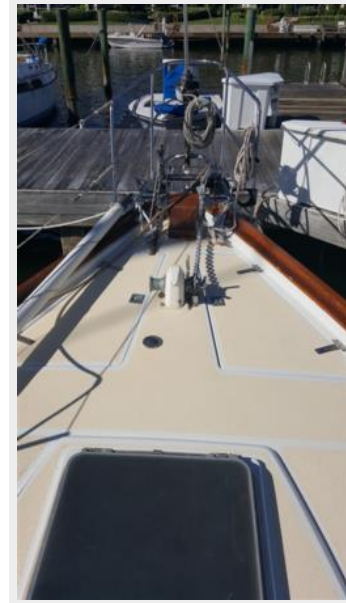
Heavy duty bow pulpit and anchor rollers



Bow view



NEWLY refinished deck!



Port profile



Pilothouse level and dodger/bimini



Wide walk arounds



Deck before new nonskid



КОНТАКТЫ

Андрей Шестаков (Andrey Shestakov) – ведущий яхтенный брокер отдела продаж яхт и судов компании Shestakov Yacht Sales Inc. Официальный представитель Shestakov Yacht Sales Inc. для русскоговорящих клиентов в центральном офисе компании в Майами/Форт Лодердейл/Флорида/США.

Контактная информация

Email: andrey@shestakovyachtsales.com

Web: shestakovyachtsales.com

Телефоны

Краснодарский край: **+7(918)465-66-44**

США, Майами, Флорида: **+1(954)274-4435**

Время работы

Понедельник – Суббота: **9:00 - 21:00**
EDT

Воскресенье: **Закрето**

Адрес



Harbour Towne Marina, 850 NE 3rd St,
STE 213, Dania, FL 33004