

WANDERER — BENFORD



Builder: BENFORD

LOA: 40' 0" (12.19m)

Year Built: 1980

Model: Cruising Sailboat

Price: PRICE ON APPLICATION

Location: United States

Our experienced yacht broker, Andrey Shestakov, will help you choose and buy a yacht that best suits your needs **Wanderer — BENFORD** from our catalogue. Presently, at Shestakov Yacht Sales Inc., we have a wide variety of yachts available on our sale's list. We also work in close contact with all the big yacht manufacturers from all over the world.

If you would like to buy a yacht **Wanderer — BENFORD** or would like help answering any questions concerning purchasing, selling or chartering a yacht, please call **+1(954)274-4435**

TABLE OF CONTENTS

TABLE OF CONTENTS	2
SPECIFICATIONS	3
Overview	3
Basic Information	5
Dimensions	6
Accommodations	6
Hull and Deck Information	6
Engine Information	6
DETAILED INFORMATION	7
Description	7
Exclusions	9
Disclaimer	9
PHOTOS	10
CONTACTS	17
Contact details	17
Telephones	17
Office hours	17
Address	17

SPECIFICATIONS

Overview

- CANOE STERN, BLUEWATER VESSEL
- 39 Vector is a Jay Benford design, similar to a 40 Valiant
- "Wanderer" offers a space-efficient, live-a-board with convenient traffic patterns, privacy spaces and walk-in storage.
- 2 private cabins and one head and shower.
- 6'8" headroom.
- Excellent access to the engine and tremendous storage ability.
- 50 hp Westerbeke 600 hrs since reported overhaul.
- Standing rigging with Norseman fittings reported 2002.
- "Wanderer" is a comfortable seaboat with a canoe stern, a well layed out deck and cockpit and a full keel with cutaway forefoot and skeg hung rudder.
- Designer notes from Jay R. Benford from the original boat spec sheet: "The Vector 39 would be a fast passagemaker and comfortable home afloat. With a displacement-length ratio of 264, the Vector 39 is light enough to perform well in all conditions, yet husky enough to provide a reserve of strength in extreme conditions. Thanks to the lightness and stiffness of the Airex core in the laminate, the boat is well insulated and sound deadened, as well as being able carry the rig well set up for good windward performance. The forefoot is cutaway, providing good maneuverability, yet the length of the keel aft provides for very good tracking and course holding ability. A bonus provided by this design is the ability to place the center of gravity of the ballast as low or lower than most finkeelers of this size. We have designed the Vector 39 with generous rudder area to provide good control in heavy weather. Under sail, she steers very easily and can be balanced to sail herself to weather with the helm free. The Vecotr 39 is sized right. She offers true live-aboard space, yet two people can sail her anywhere."
- Built in Washington State, "Wanderer" has given her owners many years of safe, comfortable sailing throughtout the Carribbean, East Coast US, Florida and Lake Champlain. She is now offered for sale in Fort Pierce, Florida.
- The Company offers the details of this vessel in good faith but cannot guarantee or warrant the accuracy of this information nor warrant the condition of the vessel. A buyer should instruct his agents, or his surveyors, to investigate such details as the buyer desires validated. This vessel is offered subject to prior sale, price change, or withdrawal without notice.
- - ACCOMMODATIONS AND LAYOUT:
 - Upon entering the offset companionway down ladder steps you will find generous hanging and wet lockers to starboard. A deep inside storage area is located behind the steps.
 - Immediately to port is a private double cabin
 - The galley is midship facing aft along the bulkhead. This has a double sink with hand pump and pressure water system, top loading refrigeration, propane stove and oven

and generous cabinets and dish storage.

- Excellent all around engine access midship reveals a clean and well maintained Westerbeke diesel engine with dual Racor filters
- The Salon has dual settees port and starboard with a centerline drop leaf table
- Tall 6'8" headroom
- Numerous opening bronze ports provide great ventilation
- Stand up nav desk to starboard
- The single head has a marine toilet, SS sink and shower
- The forward cabin has an offset double berth, drawers and hanging lockers
- Abundant storage throughout
- DECK AND HULL:
- Full keel with cutaway forefoot
- Skeg hung rudder
- bladed protected prop
- Raised cabin top
- Bronze opening ports
- High gunnels
- Aluminum toe rail
- Rubrail
- Anchor roller
- Anchor locker
- Keel stepped mast
- SS arch w/Radar/Dingy Davits/Solar panel/Wind generator
- 10' Caribe Dingy and Honda outboard
- Edson outboard mount
- Outboard hoist
- SS stern rail and SS side rails around cockpit
- Deep cockpit seating
- Bimini frame
- Offset companionway entry
- SS bow rail
- Stancions and lifelines
- Emergency tiller
- 2 anchors w/chain and rode
- Lofrans windlass
- Stern anchor hause pipe
- Flush foredeck
- Profurl roller furler
- Wide walkarounds
- Whisker pole
- Dorade vents
- 5 opening hatches
- Bronze opening ports
- teak grab rails

- Swim ladder
- Ring Buoy
- Flip chairs
- PFD's
- Radar deflector
- SAILS AND RIGGING:
- Keel stepped aluminum mast
- Whisker pole
- Profurl roller furler
- Genoa
- Staysail
- Fully battened main with 2 reef points
- Standing rigging with Norseman fittings reported 2002
- Manual boom vang
- Manual backstay adjuster
- (2) Barient #28 two speed winches
- (2) Barient #21 winches
- (1) Barient #22 winch
- All lines lead to cockpit
- Line locks and cleats
- SSB
- Raymarine Smartpilot Autopilot
- Raymarine display
- Radar Pathfinder SL70
- Standard Horizon VHF radio
- Uniden VHF
- Stereo/CD player, speakers
- Wind generator
- Solar panel
- AC DC panel
- Heart Interface
- Batteries
- 50hp Westerbeke reported rebuilt with 600 hours
- Racor dual filters

Basic Information

Category: Cruising Sailboat

Sub Category: Sloop

Model Year: 1980

Year Built: 1980

Country: United States

Dimensions

LOA: 40' 0" (12.19m)

Accommodations

Total Cabins: 2

Hull and Deck Information

Hull Material: Fiberglass

Engine Information

Engines: 1

Manufacturer: Westerbeke

Fuel Type: Diesel

DETAILED INFORMATION

Description

- ACCOMMODATIONS AND LAYOUT:
- Upon entering the offset companionway down ladder steps you will find generous hanging and wet lockers to starboard. A deep inside storage area is located behind the steps.
- Immediately to port is a private double cabin
- The galley is midship facing aft along the bulkhead. This has a double sink with hand pump and pressure water system, top loading refrigeration, propane stove and oven and generous cabinets and dish storage.
- Excellent all around engine access midship reveals a clean and well maintained Westerbeke diesel engine with dual Racor filters
- The Salon has dual settees port and starboard with a centerline drop leaf table
- Tall 6'8" headroom
- Numerous opening bronze ports provide great ventilation
- Stand up nav desk to starboard
- The single head has a marine toilet, SS sink and shower
- The forward cabin has an offset double berth, drawers and hanging lockers
- Abundant storage throughout
- DECK AND HULL:
- Full keel with cutaway forefoot
- Skeg hung rudder
- bladed protected prop
- Raised cabin top
- Bronze opening ports
- High gunnels
- Aluminum toe rail
- Rubrail
- Anchor roller
- Anchor locker
- Keel stepped mast
- SS arch w/Radar/Dingy Davits/Solar panel/Wind generator
- 10' Caribe Dingy and Honda outboard
- Edson outboard mount
- Outboard hoist
- SS stern rail and SS side rails around cockpit
- Deep cockpit seating
- Bimini frame
- Offset companionway entry
- SS bow rail
- Stancions and lifelines
- Emergency tiller

- 2 anchors w/chain and rode
- Lofrans windlass
- Stern anchor hause pipe
- Flush foredeck
- Profurl roller furler
- Wide walkarounds
- Whisker pole
- Dorade vents
- 5 opening hatches
- Bronze opening ports
- teak grab rails
- Swim ladder
- Ring Buoy
- Flip chairs
- PFD's
- Radar deflector
- SAILS AND RIGGING:
- Keel stepped aluminum mast
- Whisker pole
- Profurl roller furler
- Genoa
- Staysail
- Fully battened main with 2 reef points
- Standing rigging with Norseman fittings reported 2002
- Manual boom vang
- Manual backstay adjuster
- (2) Barient #28 two speed winches
- (2) Barient #21 winches
- (1) Barient #22 winch
- All lines lead to cockpit
- Line locks and cleats
- SSB
- Raymarine Smartpilot Autopilot
- Raymarine display
- Radar Pathfinder SL70
- Standard Horizon VHF radio
- Uniden VHF
- Stereo/CD player, speakers
- Wind generator
- Solar panel
- AC DC panel
- Heart Interface
- Batteries
- 50hp Westerbeke reported rebuilt with 600 hours

- Racor dual filters
- DISCLAIMER:
- The Company offers the details of this vessel in good faith but cannot guarantee or warrant the accuracy of this information nor warrant the condition of the vessel. A buyer should instruct his agents, or his surveyors, to investigate such details as the buyer desires validated. This vessel is offered subject to prior sale, price change, or withdrawal without notice.

Exclusions

Owner's personal belongings.

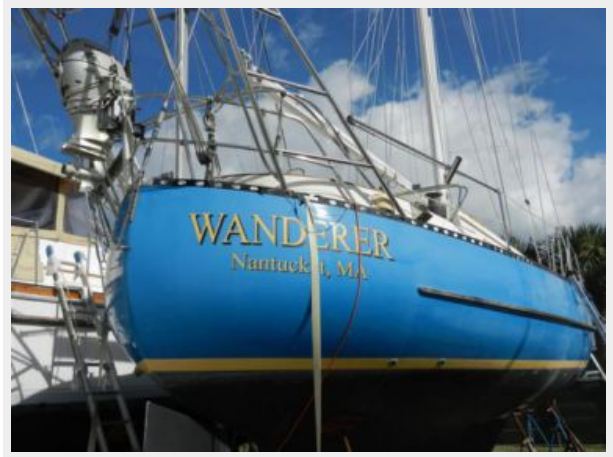
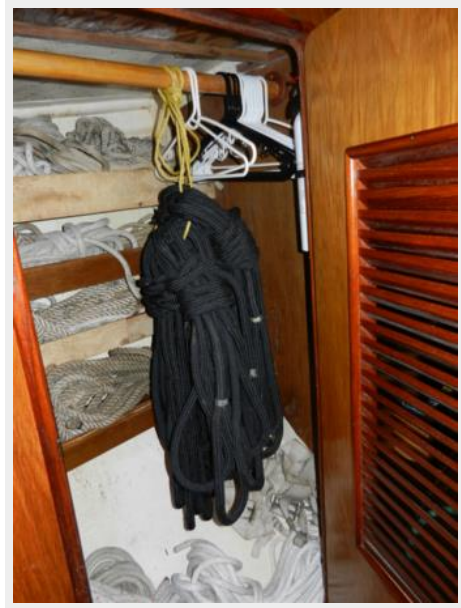
Disclaimer

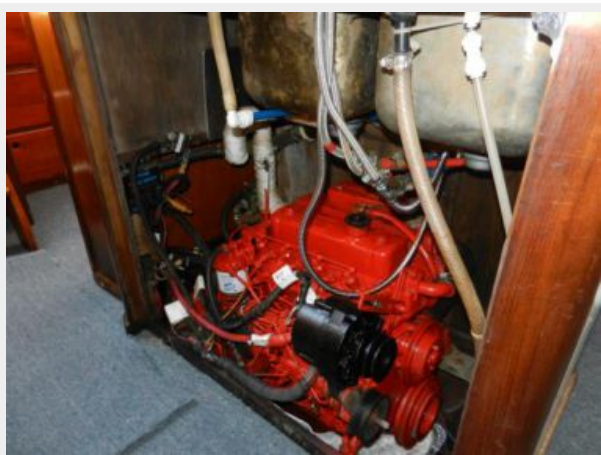
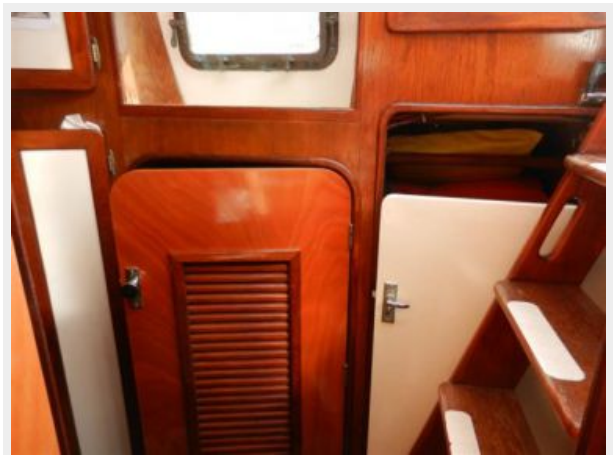
The Company offers the details of this vessel or yacht in good faith but cannot guarantee or warrant the accuracy of this information nor warrant the condition of the vessel. A buyer should instruct his representatives, agents, or his surveyors, to investigate such details as the buyer desires validated. This vessel or yacht is offered subject to prior sale, price change, or withdrawal without notice.

PHOTOS

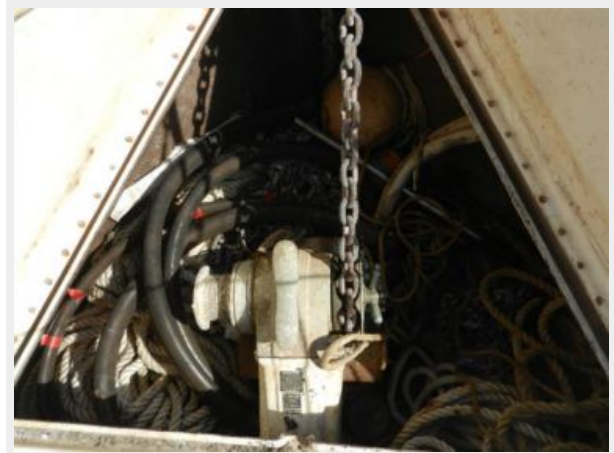
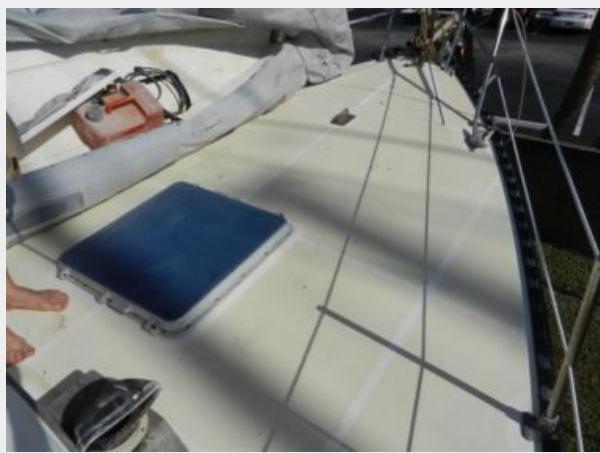
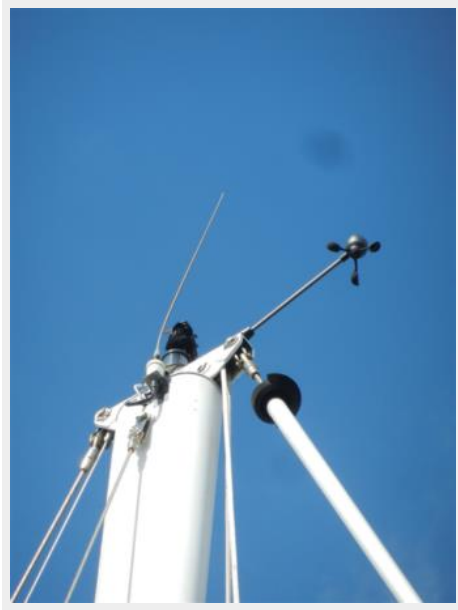


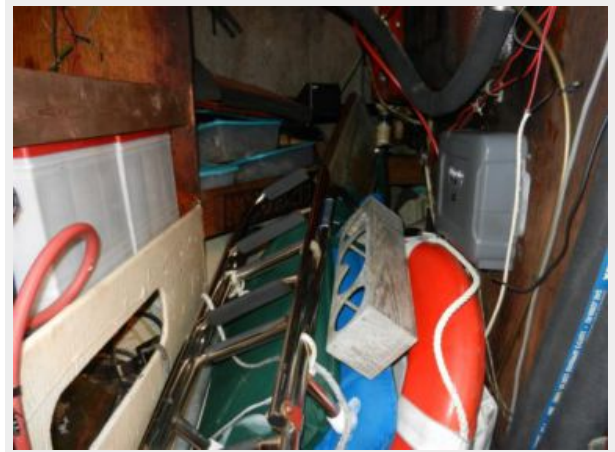












CONTACTS

Andrey Shestakov, leading yacht broker of the sales department of Shestakov Yacht Sales Inc. Shestakov Yacht Sales Inc., the official representative of the Miami/Fort Lauderdale FL headquarters.

Contact details

Email: andrey@shestakovyachtsales.com

Web: shestakovyachtsales.com/en/

Telephones

USA: +1(954)274-4435

Office hours

Monday – Saturday: **9:00 - 21:00** EDT

Sunday: **closed**

Address



Harbour Towne Marina, 850 NE 3rd St,
STE 213, Dania, FL 33004