

TE AMOR — BRUCE ROBERTS



Builder: BRUCE ROBERTS

Year Built: 1993

Model: Cruising Ketch

Price: PRICE ON APPLICATION

Location: United States

LOA: 45' 0" (13.72m)

Beam: 13' 6" (4.11m)

Min Draft: 6' 0" (1.83m)

Our experienced yacht broker, Andrey Shestakov, will help you choose and buy a yacht that best suits your needs **Te Amor — BRUCE ROBERTS** from our catalogue. Presently, at Shestakov Yacht Sales Inc., we have a wide variety of yachts available on our sale's list. We also work in close contact with all the big yacht manufacturers from all over the world.

If you would like to buy a yacht **Te Amor — BRUCE ROBERTS** or would like help answering any questions concerning purchasing, selling or chartering a yacht, please call **+1(954)274-4435**

TABLE OF CONTENTS

TABLE OF CONTENTS	2
SPECIFICATIONS	3
Overview	3
Basic Information	4
Dimensions	4
Speed, Capacities and Weight	4
Accommodations	4
Hull and Deck Information	5
Engine Information	5
PHOTOS	6
CONTACTS	16
Contact details	16
Telephones	16
Office hours	16
Address	16

SPECIFICATIONS

Overview

Strong, ocean going cruiser is ready for another adventure! Beautiful lines and dark green hull. Freshly painted deck. Ketch rigged with a large center cockpit that is fully protected with a NEW Custom Hard top bimini with canvas dodger and full enclosure. Easily managed sail plan. 5 Sail inventory, all in good condition. Mack pack system with covers, lazy jacks and fully battened Main & Mizzen. Roller furling on both head sails. Staysail has a self tending boom. All running rigging leads to the cockpit, making sail handling easy for one or two persons. Fully equipped for cruising with Solar panels, Invertor, Simpson SS Dingy davits, Dingy and Outboard, Watermaker, Heavy ground tackle, SSB, Garmin Chartplotter, Liferaft (needs recert). Tremendous provisioning room in this comfortable 2 stateroom, 2 head layout. SAAB Marine Diesel 2J Variable Pitch 30hp engine with Feathering Prop and mechanical crank to vary the pitch of the prop. Good engine access from work room/quarter berth. Many spares and extras. This is alot of boat for the money and is priced to SELL! ACCOMODATIONS: Upon entering the companionway, you will find the galley to starboard with a bench settee going forward. Louvered teak cabinet doors. Opposite is the L shaped settee with dining table and the navigation desk. The passageway going aft provides a great workshop and storage space with engine access inboard. The aft cabin has two single berths and head and sink. The forward cabin has an offset double berth to the port side and full head with shower and sink. Sleeps 4 owners and guests in 2 staterooms plus dinette berths for a total of 6 berths. Cruiseair air conditioning, Opening ports and hatches provide good ventlllation, Upholstered settees, Flatscreen TV GALLEY: "Luke" 3 burner propane stove/oven with safety shut off solenoid, Adler Barber/Waeco refrigeration/freezer, Pur 35 Watermaker, Pressure water system, Water heater, Double SS sink, Microwave, Generous provisioning room in numerous cabinets ELECTRONICS AND NAVIGATION: Garmin Chartplotter with depth sounder,, Furuno GPS Navigator, Shortwave Radio - Sea 222, VHF Radio GP31, 6" Compass, Electronic charts for Bahamas, Turks & Caicos, Cuba and Gulf of Mexico, Numerous paper charts DECK EQUIPMENT AND HULL: Nilson Electric anchor windlass, 45 lb CQR with 200' chain, bow roller, Max custom anchor with 30' chain and 200' rode, Fortress anchor rigged at stern with 200' rode, Danforth spare anchor, Simpson #175 SS Dingy Davits!, Caribe 10' Dingy, Tohatsu 9.9 four stroke outboard 2000, 6 man Liferaft, needs recert, Emergency tiller, 6 Enkes 2 speed winches, NEW Custom Hardtop bimini with solar panels on top, Canvas dodger and full enclosure, Cockpit cushions and pillows, BBQ grill, Lifelines and stanchions, Side gates, Swim ladder, Airex foam core sandwich fiberglass provides excellent insulation, Bulkheads, strong deck and waterline beams molded in, Epoxy barrier coat below waterline at original construction, Skeg mounted rudder, Stainless steel plate along bottom of the keel, Hull laid up in 1993 but vessel commissioned in 1998 ELECTRICAL SYSTEM: 325 watt solar panels, 800 watt Xantrex Inverter/Charger, 110 amp high output alternator, 70 amp spare alternator, 110 V AC electrical system, 12 V DC system, dockside electrical cables, (6) Batteries SAILS AND RIGGING: Ketch rigged,, Easily managed sail plan for one or two persons, 5 Sail inventory, all in good condition, Mack pack system with covers, lazy jacks, Fully battened Main & Mizzen, Roller furling on both head sails, Staysail has a self tending boom, All running rigging leads to the cockpit, Aluminum

mast with mast steps, Wire standing rigging MECHANICAL: 30 hp SAAB Marine Diesel 2J Variable Pitch with Feathering Prop powered directly from the engine, no transmission, Mechanical crank to vary the pitch of the prop, Freshwater cooling system, Raw water strainer, Manual wheel steering, Good engine access from work room/quarter berth, All thru-hulls bronze seacocks, Fuel filters, Bilge pumps, Manual heads, holding tank, Many spares and extras
DISCLAIMER: The Company offers the details of this vessel in good faith but cannot guarantee or warrant the accuracy of this information nor warrant the condition of the vessel. A buyer should instruct his agents, or his surveyors, to investigate such details as the buyer desires validated. This vessel is offered subject to prior sale, price change, or withdrawal without notice.

Basic Information

Category: Cruising Ketch

Sub Category: Center Cockpit

Model Year: 1993

Year Built: 1993

Country: United States

Dimensions

LOA: 45' 0" (13.72m)

Beam: 13' 6" (4.11m)

Min Draft: 6' 0" (1.83m)

Speed, Capacities and Weight

Displacement: 32000 Pounds

Water Capacity: 130 Gallons

Fuel Capacity: 30 Gallons

Accommodations

Total Cabins: 2

Hull and Deck Information

Hull Material: Fiberglass

Engine Information

Engines: 1

Manufacturer: Saab

Model: 2J

Engine Type: Inboard

Fuel Type: Diesel

PHOTOS



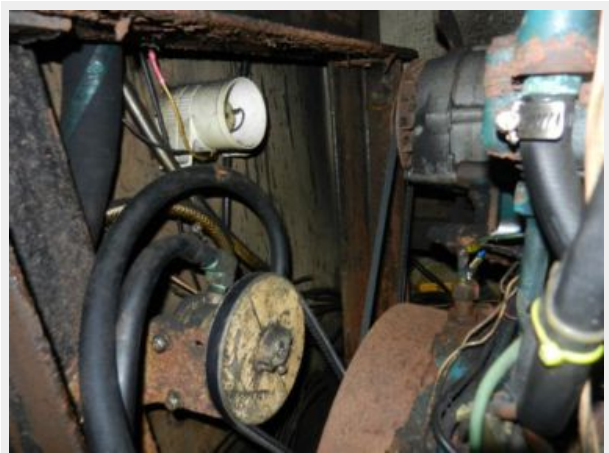




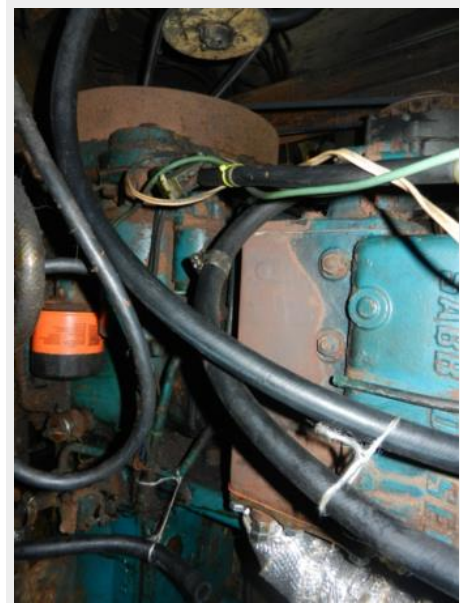














CONTACTS

Andrey Shestakov, leading yacht broker of the sales department of Shestakov Yacht Sales Inc. Shestakov Yacht Sales Inc., the official representative of the Miami/Fort Lauderdale FL headquarters.

Contact details

Email: andrey@shestakovyachtsales.com

Web: shestakovyachtsales.com/en/

Telephones

USA: +1(954)274-4435

Office hours

Monday – Saturday: **9:00 - 21:00** EDT

Sunday: **closed**

Address



Harbour Towne Marina, 850 NE 3rd St,
STE 213, Dania, FL 33004