

## JOAN'S BEACH — JEFFERSON



**Судостроитель:** JEFFERSON

**Год постройки:** 2004

**Модель:** Моторная яхта

**Цена:** **ЦЕНА ЯХТЫ ПО ЗАПРОСУ**

**Местонахождение:** United States

**Длина общая:** 82' 0" (24.99m)

**Ширина:** 20' 8" (6.30m)

**Мин. осадка:** 6' 0" (1.83m)

**Макс. осадка:** 6' 0" (1.83m)

**Крейс. скорость:** 18 Kts. (21 MPH)

**Макс. скорость:** 20 Kts. (23 MPH)

Купить Joan's Beach — JEFFERSON а также выбрать подходящую вам яхту из нашего каталога яхт вам поможет опытный яхтенный брокер Андрей Шестаков. На сегодняшний день компания Shestakov Yacht Sales Inc. имеет большое количество яхт в собственном списке продаж, а также тесно сотрудничает со всеми крупными яхтенными производителями по всему миру.

Для того чтобы купить яхту Joan's Beach — JEFFERSON а также проконсультироваться по любому вопросу связанному с покупкой, продажей, чартером яхт позвоните по телефону **+7(918)465-66-44**.

# ОГЛАВЛЕНИЕ

---

ОГЛАВЛЕНИЕ	2
ХАРАКТЕРИСТИКИ	3
Обзор	3
Основная информация	3
Размеры	3
Скорость, вместимость и масса	4
Размещение	4
Корпус и палуба	4
Информация о двигателе	4
ПОДРОБНОЕ ОПИСАНИЕ	5
Vessel Walkthrough	5
Navigation Electronics	6
Deck Hardware	8
Galley	8
Исключения	8
Отказ от ответственности	8
ФОТОГРАФИИ	9
КОНТАКТЫ	17
Контактная информация	17
Телефоны	17
Время работы	17
Адрес	17

# ХАРАКТЕРИСТИКИ

## Обзор

Joan's Beach is an 82' Jefferson Raised Pilothouse Cockpit Motoryacht featuring four ensuite staterooms and two crew berths; Midship Master with King size bed, VIP Forward with Centerline Queen bed, and port guest stateroom with twins. The fourth Stateroom/ Crews Quarters are aft of the engine room and can be accessed from a stairway on the starboard aft salon or from the cockpit through a door. The Fourth Stateroom has over/under berths in a toe to toe (L shaped) configuration and a private full bath. There are additionally two over under crew or kids berths opposite the aft crew galley.

Air conditioned flybridge with hardtop and EZ2CY glass enclosure.

Wesmar stabilizers and bow thruster, (2) generators; 20kw Onan new in 2012 with @ 1000 hrs, and 21kw Phasor new in February 2017 with @ 10 hrs. Twin DDC/MTU 12V2000's; 1480 hp diesels with @ 3600 hrs will cruise in the 20 knot plus range. Yacht just completed annual yard service February 2017.

## Основная информация

**Тип судна:** Моторная яхта

**Модельный год:** 2004

**Год постройки:** 2004

**Страна:** United States

## Размеры

**Длина общая:** 82' 0" (24.99m)

**Ширина:** 20' 8" (6.30m)

**Мин. осадка:** 6' 0" (1.83m)

**Макс. осадка:** 6' 0" (1.83m)

**Трапы:** 21' 0" (6.40m)

## Скорость, вместимость и масса

---

**Крейс. скорость:** 18 Kts. (21 MPH)

**Макс. скорость:** 20 Kts. (23 MPH)

**Вместимость воды:** 400 Gallons

**Вместимость сточного бака:** 100 Gallons

**Объем топливного бака:** 2200 Gallons

## Размещение

---

**Всего кают:** 4

**Всего коек:** 8

**Всего ком. состава:** 5

**Спальных мест экипажа:** 2

**Комм. состав экипажа:** 1

## Корпус и палуба

---

**Материал корпуса:** Fiberglass

**Отделка корпуса:** Aluminum

## Информация о двигателе

---

**Двигатели:** 2

**Производитель:** DDC/MTU

**Модель:** 12V2000

**Тип двигателя:** Inboard

**Тип топлива:** Diesel

---

# ПОДРОБНОЕ ОПИСАНИЕ

---

## Vessel Walkthrough

---

The Yacht is boarded via a Marquipt Tiderider boarding stair which can be mounted at three different locations along either port or starboard sides. There are boarding gates through the raised bulwark at either the pilothouse doors or aft just forward of the aft deck wing doors. The third option is boarding at the cockpit.

From the aft deck going forward through a sliding stainless steel and glass door one enters the Salon, which has seating and cocktail tables on both port and starboard sides and a full entertainment center aft to port.

There is another seating or dining area forward to starboard with a hi-lo table on an electric lift.

The Day Head is forward on the port side.

Going forward from the salon up one step is the Galley and Pilothouse on the same level. This area can be closed off from the salon by a sliding pocket door and galley pass through covering board.

The U shaped Galley has granite countertops and full size appliances.

There are port and starboard wing doors in the Pilothouse and bench seating as well as a Stidd chair for the helmsman.

On the port side aft in the pilothouse is a spiral stairway to the flybridge and there is a curved stairway to the left of the galley going below to the accommodations.

The Master Stateroom is amidships and features a full beam cabin, centerline king bed and ensuite head forward to starboard. There is a makeup table to starboard and a settee to port. There are sliding shoji screens in front of the portlights and solid teak floors throughout.

The VIP Cabin is forward in the bows and features an island queen berth, ensuite bath aft to starboard, and shoji screens in front of the portlights.

The Third Guest cabin is to the port side of the foyer on the accommodations deck and features twin berths with nightstand between and shoji screens in front of the portlights.

The Flybridge is accessed from two locations; the spiral staircase from the port side of the pilothouse, or from a stairway up from the aft deck. The flybridge has a hardtop with EZ2CY enclosure on all four sides, air conditioning, and helm with two Stidd chairs and full electronics. The flybridge seating is expansive with two long curved settees with tables, complete bar/grill area with three stools and a third seating area on the boat deck with weatherproof moveable furniture. The 1500lb davit stows along the port side and deploys a Zodiac 420 Yachtline Deluxe center console RIB with 40hp Johnson 4 stroke outboard.

NOTE: The electronics mast on the hardtop is hinge-mounted which allows the mast to be easily lowered thereby reducing the air draft of the vessel to 20 feet.

The Aft Deck features a bench seat across the back and teak grate dining table and four teak chairs. There is a refrigerator and icemaker and sink in cabinetry forward to port. The aft deck is weather protected by wing doors both port and starboard. The stairway to the flybridge is on the starboard side and there is a stairway down to the cockpit on the starboard side as well.

The Cockpit has a transom door on to a large swim platform which provides good access to the yacht's tender. There is a separate entrance to the crew's quarters and the engine room from the cockpit through a full size door on the forward bulkhead; the crew's quarters and engine room can also be accessed from a stairway in the salon aft to starboard.

The Crew's Quarters/ Fourth Guest Cabin features a private bath, four single berths, mini-galley, laundry center, and access to the engine room.

The Foredeck features a Portuguese Bridge with centerline pass through, seating areas to port and starboard, access to chain locker and dual anchor windlasses. There are raised bulwarks around the bows and side deck walk-arounds to provide comfort and security.

## Navigation Electronics

---

LOWER HELM; PRIMARY STATION

NEC daylight display running MaxSea Chart System

(2) Furuno Navnet Multi Function displays

Detroit Diesel Electronic Engine monitors

MTU Engine Controls

Wesmar Bow Thruster controls

Distribution Control Panel for 120/240 VAC and 12/24 VDC

Wesmar Stabilizer Controls

Furuno 72 mile radar

Hynautic Trim Tabs

Furuno digital depth

Furuno Autopilot

(2) Simrad VHF radios with DSC

Xantrex Inverter Control

Fireboy manual/auto fire system control

Emergency engine controls for gears and throttles

(2) ACR Spotlight controls

Voyager Camera Monitor, aft deck and engine room

(2) Generator control panels; Onan and Phason

KVH 4 Satellite TV receiver

FLYBRIDGE HELM; SECONDARY STATION

(2) Furuno Navnet Multi Function displays

Detroit Diesel Electronic Engine monitors

MTU Engine Controls

Wesmar Bow Thruster controls

Hynautic Trim Tabs

Furuno digital depth

Furuno Autopilot

(2) Simrad VHF radios with DSC

(2) ACR Spotlight controls

Voyager Camera Monitor, aft deck and engine room

COCKPIT CONTROLS:

MTU Engine Controls

Wesmar Bow Thruster controls

---

## Deck Hardware

---

Dual Simpson Lawrence 4000# Anchor Windlasses and dual bow rollers

Windlass controls on foredeck and both helm stations

(1) 50kg Bruce Anchor

(1) Stainless Steel 100lb Plow Anchor

Marquipt 7 stair Tiderider Boarding Ladder

Marquipt step-across boarding stair

Folding Stainless Steel swim ladder mounted under swim platform

Steelhead Marine 1500lb Hydraulic Davit

---

## Galley

---

Galley features all GE Profile Appliances; full size side by side Freezer and Refrigerator with icemaker and water dispenser, Convection Microwave, Four burner halogen cooktop, and trash compactor. Fisher & Paykel Dishwasher. Dual Stainless Steel Sink. All the usual accessories; coffee maker, toaster, utensils and cookware. Fully Equipped.

---

## Исключения

---

При продаже яхты исключаются личные вещи владельца.

---

## Отказ от ответственности

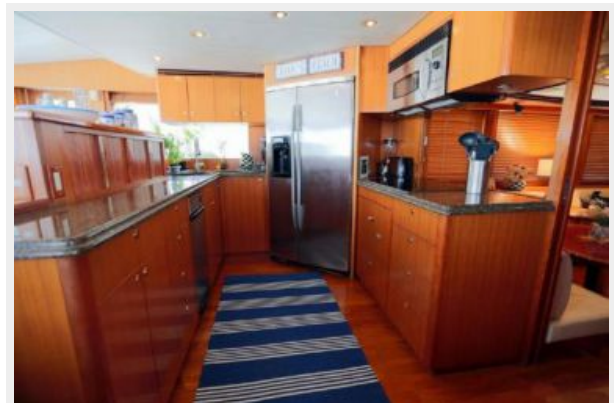
---

Компания предоставляет описание судна или яхты добросовестно, но не может гарантировать точность этой информации, а также не ручается за техническое состояние. Покупатель должен проинструктировать своих агентов или оценщиков исследовать представленную информацию более подробно, по собственному желанию. Продажа судна или яхты, изменение цены или снятие с продажи будет происходить без предварительного уведомления.

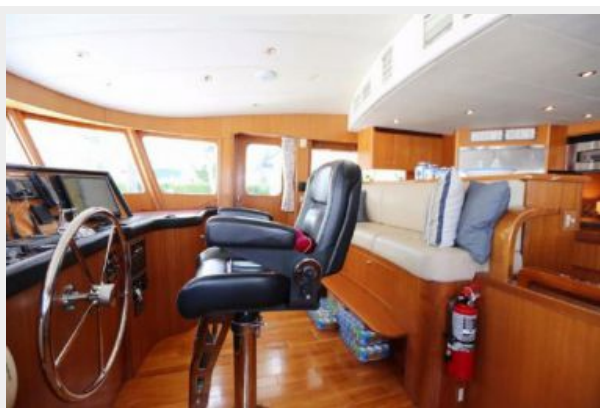


# ФОТОГРАФИИ

























# КОНТАКТЫ

Андрей Шестаков (Andrey Shestakov) – ведущий яхтенный брокер отдела продаж яхт и судов компании Shestakov Yacht Sales Inc. Официальный представитель Shestakov Yacht Sales Inc. для русскоговорящих клиентов в центральном офисе компании в Майами/Форт Лодердейл/Флорида/США.

## Контактная информация

Email: [andrey@shestakovyachtsales.com](mailto:andrey@shestakovyachtsales.com)

Web: [shestakovyachtsales.com](http://shestakovyachtsales.com)

## Телефоны

Краснодарский край: **+7(918)465-66-44**

США, Майами, Флорида: **+1(954)274-4435**

## Время работы

Понедельник – Суббота: **9:00 - 21:00**  
EDT

Воскресенье: **Закрето**

## Адрес



Harbour Towne Marina, 850 NE 3rd St,  
STE 213, Dania, FL 33004