

SUNSEEKER 75 YACHT — SUNSEEKER



Builder: [SUNSEEKER](#)

Year Built: 2017

Model: Motor Yacht

Price: PRICE ON APPLICATION

Location: United States

LOA: 75' 6" (23.01m)

Beam: 18' 10" (5.74m)

Min Draft: 5' 4" (1.63m)

Max Draft: 5' 4" (1.63m)

Cruise Speed: 25 Kts. (29 MPH)

Max Speed: 34 Kts. (39 MPH)

Our experienced yacht broker, Andrey Shestakov, will help you choose and buy a yacht that best suits your needs **Sunseeker 75 Yacht — SUNSEEKER** from our catalogue. Presently, at Shestakov Yacht Sales Inc., we have a wide variety of yachts available on our sale's list. We also work in close contact with all the big yacht manufacturers from all over the world.

If you would like to buy a yacht **Sunseeker 75 Yacht — SUNSEEKER** or would like help answering any questions concerning purchasing, selling or chartering a yacht, please call **+1(954)274-4435**

TABLE OF CONTENTS

TABLE OF CONTENTS	2
SPECIFICATIONS	3
Overview	3
Basic Information	3
Dimensions	3
Speed, Capacities and Weight	4
Accommodations	4
Hull and Deck Information	4
Engine Information	4
DETAILED INFORMATION	5
Upgrades and Options	5
Construction	6
Deck	6
Aft Cockpit	7
Main Helm Console	7
Accommodations	8
Galley	11
Engines	11
Electrical	12
Exclusions	12
Disclaimer	12
PHOTOS	13
CONTACTS	27
Contact details	27
Telephones	27
Office hours	27
Address	27

SPECIFICATIONS

Overview

Warranty, Upgraded MAN 1550s, Stabilized, Hard-top, and Duty Paid. See Listing for Additional Optional Upgrades!

Delivered February 2017. Trades Welcome!

A fusion of style and sophistication, the Sunseeker 75 Yacht will never fail to impress. Over three spacious decks, both modern and classic design blend harmoniously to exceed even the highest of expectations.

On the main deck, signature 'z' shaped windows allow plenty of natural light to illuminate both the dining and separate seating areas. Below deck, three double suites, plus twin bed guest cabin comfortably accommodate up to eight guests. Outside, the vast outdoor playground was made for entertaining. Complete with wetbar, sunpads and dining area, it's the perfect space for relaxing in a secluded bay or enjoying the thrill of travelling along the coastline at 34 knots - proving that sometimes, you can have it all.

Basic Information

Category: Motor Yacht

Model Year: 2017

Year Built: 2017

Country: United States

Dimensions

LOA: 75' 6" (23.01m)

Beam: 18' 10" (5.74m)

Min Draft: 5' 4" (1.63m)

Max Draft: 5' 4" (1.63m)

Speed, Capacities and Weight

Cruise Speed: 25 Kts. (29 MPH)

Cruise Speed RPM: 325 Kts.

Max Speed: 34 Kts. (39 MPH)

Displacement: 102294 Pounds

Water Capacity: 317 Gallons

Holding Tank: 49 Gallons

Fuel Capacity: 1321 Gallons

Accommodations

Total Cabins: 4

Total Heads: 4

Hull and Deck Information

Hull Material: Fiberglass

Engine Information

Engines: 2

Manufacturer: MAN

Engine Type: Inboard

Fuel Type: Diesel

DETAILED INFORMATION

Upgrades and Options

2017 Sunseeker 75 Yacht built to US specification,

Fitted with Twin MAN V12 1550 (2 x1550 PS).

Extras - Item Descriptions:

USA Package:

- Generator second Onan 29kW 60Hz including cable master and second shore power socket.
- Fresh water deck wash system with outlets forward and aft including deck wash hose kit.
- Low level LED side deck lights 8 per side.
- Stern Docking Lights.
- Fire and blige flood monitoring alarm system 7 zone.
- Bow Sunbathing Cushions with folding back rests.
- Flybridge Teak Decking.
- Additional pair 12" Oval Mooring Cleats fitted to the aft lower edge of the hull band facing aft.
- Pair of Retractable Cleats for tender on port and stbd corners of platform.
- Electric cooling unit for lower cockpit cool box.
- Water purifier for ice maker with spare cartridge.

Audio Package:

- Bose Lifestyle 535 5:1 Surround entertainment System with Pioneer Blu-ray player and an Auxiliary HDMI socket.
- Cockpit zone performance audio upgrade with Four Sonance Extreme Speakers with Sonos Connect.
- Flybridge zone performance audio upgrade with Four Sonance Extreme Speakers with Sonos Connect and one Subwoofer.
- Fore Deck zone performance audio upgrade with Two Sonance Extreme Speakers with Sonos Connect.
- The zoning audio to be linked to the Saloon AV system via Sonos Connect with one iPad mini supplied for control of the zones through a Sonos App.

Additional Optional Upgrades

- 90 Meters of 12mm Galvanised anchor chain
- Aft docking station. Second Xenta Smart-stick docking, Multi panel and horn.

- Air Conditioning - Tropical upgrade to chillers and air handlers including second shore power socket.
- Diamante premium exterior upholstery upgrade
- Electrically operated side opening window in the galley
- **Fin Stabilisation**
- Granite upgrade on Galley worktops & Galley flooring
- **Hard top in GRP with stainless steel supports and retractable roof canopy**
- Hydraulic Sleipner Bow thruster SH300 and Hydraulic Sleipner Stern Thruster SH240 system with Simultaneous dual Proportional controls
- Interior Wood Finish - Black American Walnut Gloss
- Preparation for future fit of Flybridge Hydraulic Crane
- Preparation for future installation of a Water Maker
- Samsung 22" LED TV with Fusion DVD/CD/Radio tuner with remote and Bluetooth audio connectivity linked to TV with stereo speakers in the Crew Cabin
- Special Saloon Sofa (Port and Starboard Side) seat back cushion design in lieu of standard loose cushions
- Teak Side Decks
- Underwater lights - Lumishore TIX202 LED x 4
- Xenta Smart - joystick docking system - dual station
- 14 x Additional Scatter Cushions

Construction

- Hand-laid GRP
- Gel coat including stripes
- Vinylester skin coat with powderbound mat
- Stitched multi-axial reinforced single-skin bottom
- Balsa-cored hull topsides
- Cored deck and superstructure
- Hull stiffened with longitudinal stringers supported by transverse bulkheads and floors

Deck

- Fittings all in stainless steel
- 8 stainless steel deck cleats
- Pulpit and cockpit rails
- Stainless steel fendering with rubber insert
- Stainless steel bow roller with anchor stop
- Stainless steel bow plate
- Delta anchor 50kg and 60m 12mm chain (galvanised)
- Electric bow winch and capstan with deck, cockpit and flybridge controls 24v

- Chain locker – fender stowage
- Curved safety glass windscreen
- 3 x Pantograph windscreen wipers 24VDC and washers
- Fuel fillers port and starboard
- Fresh water filler
- IMCO navigation lights
- Remote spotlight 24v
- Ensign staff and socket
- Fender tie bar under anchor locker lid
- Fore deck storage lockers
- Fore deck seating
- 8 fenders
- 6 warps

Aft Cockpit

- Teak-laid cockpit floor
- Self-draining
- Moulded staircase to flybridge
- Side bar unit with ice maker and cool box
- Stern seating
- Stern safety gates
- Engine room access hatch
- 2 x stern capstan winches 24v and fairleads
- Rope lockers
- Cockpit speakers
- Overhead cockpit lights 24v
- Low-level courtesy lights aft cockpit 24v

Main Helm Console

- Port-side observation area seating group
- Upholstered helm seats
- Console with walnut type fascia
- Leather rimmed chrome steering wheel
- Hydraulic power steering
- Radar/chart plotter with GPS
- Autopilot
- Electronic speed and depth sounder
- VHF radio with DSC
- Engine instrumentation
- Touch screen monitoring panel

- Rudder indicator
- Trim tab controls
- Compass
- Horn
- Switch panels
- Windscreen wipers with washers
- Demisters
- Cigar lighter
- Glass holders
- Double AC socket
- Hand-held fire extinguisher
- Side opening door to side deck

Accommodations

Saloon

- Flush stainless steel glazed sliding door to aft cockpit
- Air conditioning
- Television 55"
- Blu-ray/radio/CD/DVD cinema surround system
- iPod dock/radio for exterior system
- Coffee table
- LED overhead lighting 24v
- 2 x double AC sockets
- Scatter cushions
- Choice of interior finishes and veneers
- Fitted carpet

Dining

- Large dining area with formal dining table, outboard bench and 5 chairs
- Bar cabinet with 8 champagne flutes and 8 whisky glasses
- Access stairs to the lower decks
- LED overhead lighting 24v
- 2 x double AC sockets
- Fitted carpet

Aft Master Stateroom

- Panoramic windows with opening ports and blinds
- Double berth
- Under-berth drawers and storage
- Bedside cabinets

- Fixed settee
- Dressing table with mirror and stool
- LED overhead lights 24v
- 2 x reading lights 24v
- 2 x double AC socket
- Television 55"
- CD/DVD player
- Air conditioning
- Walk-in wardrobe
- Door to en suite toilet and shower
- Fitted carpet

Master En Suite Shower Room

- Electric toilet
- Washbasins, taps and soap dispenser
- Toothbrush and glass holder
- Towel ring and towels
- Mirrored vanity unit
- Separate shower compartment
- Extractor fan
- LED overhead light 24v
- Opening porthole with mosquito screen and blind
- Razor socket 240/110v

VIP Forward Stateroom

- Double berth
- Drawers and storage beneath
- Wardrobe
- Dressing table with mirror and stool
- LED overhead lights 24v
- 2 x reading lights 24v
- 2 x panoramic windows with opening ports and blinds
- Deck hatch with screen
- Two double AC sockets
- Television 40"
- Radio/CD/DVD player
- Air conditioning
- Door to en suite toilet/shower
- Fitted carpet

VIP En Suite Shower Room

- Electric toilet

- Washbasin, taps and soap dispenser
- Toothbrush and glass holder
- Towel ring and towels
- Mirrored vanity unit
- Separate shower compartment
- Extractor fan
- LED overhead light 24v
- Opening porthole with mosquito screen and blind
- Razor socket 240/110v

Starboard Guest Cabin

- Double berth
- Drawers and storage beneath
- Bedside units
- 2 x reading lights 24v
- Wardrobe with mirrored door
- LED overhead lights 24v
- Opening porthole with mosquito screen and blinds
- Two double AC sockets
- Air conditioning
- Television 32"
- Radio/CD/DVD player

Starboard Ensuite Head

- Electric toilet
- Wash basin, taps and soap dispenser
- Toothbrush and glass holder
- Towel ring and towels
- Mirrored vanity unit
- Separate shower compartment
- Extractor fan
- LED overhead light 24v
- Opening porthole with mosquito screen and blind
- Razor socket 240/110v

Port Guest Cabin

- 2 single berths
- Under-berth stowage
- 2 x reading lights 24v
- Wardrobe with mirrored door
- LED overhead lights 24v
- Opening porthole with mosquito screen and blind

- Double AC socket
- Air conditioning
- Television 22"
- Radio/CD/DVD player

Port Ensuite Head

- Electric toilet
- Wash basin, taps and soap dispenser
- Toothbrush and glass holder
- Towel ring and towels
- Mirrored vanity unit
- Separate shower compartment
- Extractor fan
- LED overhead light 24v
- Opening porthole with mosquito screen and blind
- Razor socket 240/110v

Galley

- Electric refrigerator and freezer drawers
- 4 burner ceramic hob
- Extractor fan
- Microwave oven
- Stainless steel sink
- Hot and cold water
- Rubbish bin
- 8 place crockery and cutlery set
- 2 x double AC sockets
- Hand-held fire extinguisher
- Dishwasher
- First aid kit

Engines

- MAN 1550s
- Soundproofing throughout engine room
- 2 x aluminium cross balanced fuel tanks with electric sending unit
- Separate fuel filters/water separators
- Automatic fire extinguishers
- Engine room and forward bilge flood alarms
- Automatic bilge pumps
- Automatic flood pumps

- 4 x extractor fans 24v
- Manual bilge pump

Electrical

- Slow speed generator with underwater silent exhaust and sound box
- Shore power dockside connection
- Galvanic isolator
- 24v and 12v electrical system with full circuit breaker protection
- 8 x engine batteries 24v circuit
- 8 x domestic batteries 24v circuit
- 4 x generator batteries 12v circuit
- Alternator split charging system
- Remote battery switches controlled from locker in cockpit
- Battery charger for 24v circuits
- Battery charger for 12v circuits
- AC Water heater
- AC sockets throughout the boat
- 24v hand light and cable

Exclusions

Owner's personal belongings.

Disclaimer

The Company offers the details of this vessel or yacht in good faith but cannot guarantee or warrant the accuracy of this information nor warrant the condition of the vessel. A buyer should instruct his representatives, agents, or his surveyors, to investigate such details as the buyer desires validated. This vessel or yacht is offered subject to prior sale, price change, or withdrawal without notice.

PHOTOS



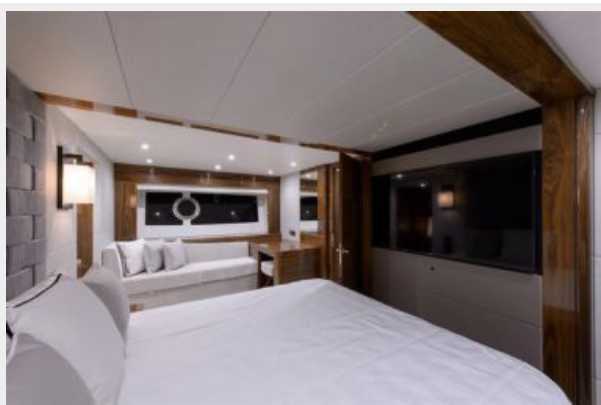


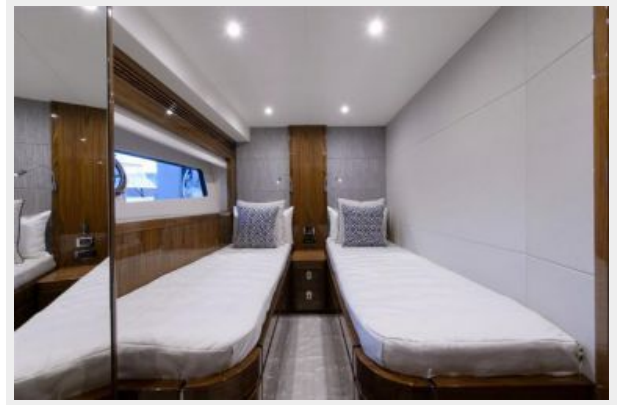










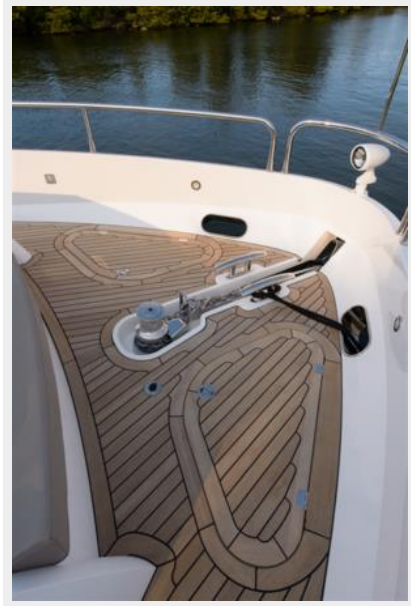














CONTACTS

Andrey Shestakov, leading yacht broker of the sales department of Shestakov Yacht Sales Inc. Shestakov Yacht Sales Inc., the official representative of the Miami/Fort Lauderdale FL headquarters.

Contact details

Email: andrey@shestakovyachtsales.com

Web: shestakovyachtsales.com/en/

Telephones

USA: +1(954)274-4435

Office hours

Monday – Saturday: **9:00 - 21:00** EDT

Sunday: **closed**

Address



Harbour Towne Marina, 850 NE 3rd St,
STE 213, Dania, FL 33004