

KIAMAR — NAUTOR



Судостроитель: NAUTOR

Год постройки: 2009

Модель: Крейсерская яхта

Цена: **ЦЕНА ЯХТЫ ПО ЗАПРОСУ**

Местонахождение: Italy

Длина общая: 76' 6" (23.30m)

Ширина: 19' 0" (5.79m)

Мин. осадка: 9' 11" (3.00m)

Купить **KIAMAR — NAUTOR** а также выбрать подходящую вам яхту из нашего каталога яхт вам поможет опытный яхтенный брокер Андрей Шестаков. На сегодняшний день компания **Shestakov Yacht Sales Inc.** имеет большое количество яхт в собственном списке продаж, а также тесно сотрудничает со всеми крупными яхтенными производителями по всему миру.

Для того чтобы купить яхту **KIAMAR — NAUTOR** а также проконсультироваться по любому вопросу связанному с покупкой, продажей, чартером яхт позвоните по телефону **+7(918)465-66-44**.

ОГЛАВЛЕНИЕ

ОГЛАВЛЕНИЕ	2
ХАРАКТЕРИСТИКИ	3
Обзор	3
Основная информация	3
Размеры	3
Скорость, вместимость и масса	3
Размещение	3
Корпус и палуба	4
ПОДРОБНОЕ ОПИСАНИЕ	5
GENERAL	5
Исключения	8
Отказ от ответственности	8
ФОТОГРАФИИ	9
КОНТАКТЫ	13
Контактная информация	13
Телефоны	13
Время работы	13
Адрес	13

ХАРАКТЕРИСТИКИ

Обзор

This Swan 75FD is the true expression of luxury lifestyle; the most pleasing blend of dynamic styling, technology and luxurious appointment. The two cockpits provide unparalleled relaxation space; the aft for sailing and control while the amidships offers comfortable seating for guests protected by an integrated bimini to shade from the sun, around a semi-permanent table with access to the main companionway. A perfect example of the luxury this Swan possesses is the oil waxed, satin finished teak joinery that compliments the light, welcoming interior creating a voluminous impression. Nautor's hallmark refined lines, makes this the most eye catching competitive shorthanded cruiser available on the world market in the 75ft category. Lightly used and equipped with everything you would need to go anywhere. CERTIFICATE CE Category A Ocean

Основная информация

Тип судна: Крейсерская яхта

Подкатегория: Sloop

Модельный год: 2009

Год постройки: 2009

Страна: Italy

Размеры

Длина общая: 76' 6" (23.30m)

Ширина: 19' 0" (5.79m)

Мин. осадка: 9' 11" (3.00m)

Скорость, вместимость и масса

Водоизмещение: 83776 Pounds

Объем топливного бака: 476 Gallons

Размещение

Всего кают: 4

Корпус и палуба

Материал корпуса: GRP

ПОДРОБНОЕ ОПИСАНИЕ

GENERAL

Hull and Deck equipment

HULL & DECKHull is constructed in single skin glass/aramid hybrid reinforced polyester laminate with vinylester skincoats. Carbon fiber stringers and reinforcementsHull is finished in navy blue gelcoat, with white cove and boot stripesKeel is an antimony lead casting with cast in keel bolts of hi-tensile stainless steel

Hull was originally finished in “Flag Blue” navy blue gelcoat, with white cove and boot stripes, but in 2018 has been painted with Awlgrip (same blue colour)

Steering SystemRudder of foam filled carbon with tapered stock in carbon compositeDual destroyer type steering wheels with teak trim and carbon spokes mounted on carbon pedestalsLightweight aluminum steering quadrantEmergency steering gear stowed in lazaretteAdditional Hull FeaturesHydraulically operated bathing platform with teak surface with wireless remote controlTransom door seals pneumatically preventing water ingressTelescopic electric gangway in stainless steel and teak Max Power 315 retractable thruster with 2 foot switches **DECK**Deck is a sandwich construction, using glass/aramid hybrid fibre reinforced polyester laminate with a low-density closed cell foam coreHi density core or solid laminate under deck fittings.Deck laminates are finished in gelcoat White NGA 9650Laid teak 9 x 55 mm nominal thickness on side and bridge deck, raised saloon top, cockpit soles and seats Low toe rail inside composite bulwarkDeck EquipmentStainless steel retractable anchor arm.Pulpit and pushpit are 740 mm high and made of Ø 32 mm stainless steel tube. Pushpit has gates for easy access to bathing platform.Recessed sprayhood in front of main companionwayAluminum sprayed white radar post on aft deckMooring cleats on bow and stern, pop-up mooring cleats midshipTender mounting brackets on foredeckWinches (Harken)Primary 2 x H B1110.3 STHEASASSecondary 2 x H B1110.3 STHEASAMain Sheet H B1110.3 STHEASAHalyard 2 x H B70.2 STEAMast Winch B70.2 STEAAncoring Lewmar 3000 windlass recessed in anchor locker (remote control also in aft cockpit – wireless controls)Mooring Retractable Sanguinetti mooring winch on foredeckAdditional 2 x B 60.2 STA on coamings in aft cockpit

Accommodation and Interior

GeneralTeak interior is finished in hand rubbed satin varnishTopsides where visible lined with teak battensFloorboards with teak veneer finishRemovable overhead linerSky screens/blinds on all deck hatchesOverhead handrails in saloonCantalupi reading lights over each berthCantalupi halogen overhead lightingRed night lights and ceiling level, one in the galley and one prior to entering the owners cabin. Fore PeakStorage space forward of water tight bulkhead in crew headForward Cabin (Crew)Two fixed berths on starboard sideSettee on port sideCorian covered work surface on port sideTeak storage boxes below berth2 full height hanging lockers En suite head with showerTecma silence WC, mirrors, washbasin and storage lockersForward Guest Cabin (Port)Double berth below with folding Pullman berth aboveDrawers below double

berthHanging locker forward of berthFull height mirror with halogen spotlights on bulkheadBed side table next to lower berthEn suite head with showerTecma silence WC, mirrors, washbasin and storage lockersGalley (STBD)Insulated and sheathed space for cooker1 large stainless steel sinkFolding and recessed garbage binFront Loading refrigerator forwardTop loading freezerDishwasher Counter tops finished in Corian Cameo WhiteStorage lockers, drawers and cupboardsExtra lockers Galley EquipmentStainless Steel four burner Force 10 cooker with oven, gimbaled mountingLavazza Espresso machineMeile Automatic washer/dryer (3KG)Dishwasher Miele for 12 place settingsSaloonL-shaped settee to port with table and two Swan chairs on centerlineSettee on starboard side with electric adjustable height coffee tableBookshelves and lockers either side outboardNav StationCustom starboard facing chart table on aft starboard side of saloonDrawers and bookshelves for navigation materialsElectrical switchboard within reachLED light indicators for electrical consumersElectronic instruments mounted flush on vertical panelsOilskin locker aftEngine RoomInternally sound insulated and fire resistant (SOLAS B-15) Fire shutters and storm covers on ventilation ductsIntegral drip tray below enginesAft Guest Cabin (PORT)Sofa outboard to port with folding Pullman aboveWriting desk and Swan chair inboardFull height hanging locker forward of writing deskEn suite head with showerTecma silence WC, mirrors, washbasin and storage lockersAft Guest Cabin (STBD)Upper and lower fixed berths outboardHanging lockerEnsuite head with shower, Tecma WC, washbasin, mirrors and storage lockersAft Cabin Large owners king size bed Large mirror centerline on forward bulkheadHanging lockers on either side outboard and forward of berthsEn suite head with separate shower stall forward to portTecma silence WC, mirrors, washbasin and storage lockers

Engine and Mechanical

ENGINECummins 6BT5.9-M marine diesel engine 134Kw/180HpZF 63 A hydraulic reverse/reduction gear 2.68:1Hi tensile steel shaft with drip free shaft seal and P-bracketBruntons Varifold 3 blade folding propellerTwo stage silencing exhaust system with fiberglass silencer and gas/water separators fitted to main engine and generator. Cooling water is discharged below waterline and exhaust gasses aftTotal fuel capacity 1800 L in seven stainless steel tanksDual Spare filters for engine, single for generator, all with water in fuel alarm and drain valveFuel and water level meters at chart table**Plumbing Systems**Plumbing SystemsHot and cold pressurized water system, electric pumps that can either be run in parallel or separatelyFresh water capacity 600 litres in two GRP integral tanks.Hot water produced by 220v heating element or engine and stored in 80 litre tank.Deck shower on swim platform with hot and cold water.Sea water pump for fire fighting and deck wash, outlet on foredeck.Freshwater connection to the deck-wash.Fresh water foot pump in galley.Two watermakers:1 x Spectra Newport water maker producing 64 L/H each 24V (in lazarette, control in workshop).1x Sea recovery Aqua whisper water maker 140LPH 240V.

Refrigeration SystemsTwo 230V AC driven Iceberg refrigeration units with hold-over plates for fridge and both freezersPossible to run the units off the inverterThermostatic control enables one freezer to be used as a refrigeratorVentilation SystemForced ventilation in all cabins and for bilge and lazaretteCondaria Reverse cycle Air conditioning system with fan coils in:Owner's CabinAft port cabinAft stbd cabinSaloonForward Guest CabinGalleyForepeakOpenable deck hatches and portholesBattery boxes ventilated outside via fansEngine room exhaust fansDrainage

System Two manual whale Titan bilge pumps (cockpit and saloon) to pump out main bilge One electrical submersible bilge pump in main bilge 2 electric & 1 manual bilge pump in lazarette operated from aft cockpit Galley sinks drain directly through sea cock Washbasins and showers drain into sump tanks (capacity 60L), pumped out by individual electric pumps Tecma silence heads use fresh water and drain into stainless holding tanks with level indicator Tanks emptied by electric pumps or via deck suction lines. Back up electric pumps fitted to each tank

Electrical Systems

24v DC system with insulated return 230V AC is grounded three wire system Electrical distribution panel near chart table Wiring sized to minimize voltage drop Lightning protection through mast, rigging and keel DC System Service battery bank 980Ah 5h (960 Ah 20 h) Radio battery bank 240 Ah Battery parallel switch for engine and service batteries Separate batteries for engine and generator starting AC System Fed by 50A shore power system, generator or inverter Reverse polarity switch for shore power 20 KwA Westerbeke diesel generator with sound shield and PTO clutch Chargers/Inverters 140A alternator on main engine 2x 230V 75A service battery chargers 2500 1x 230V 50A radio battery charger 1500 Engine and generator batteries charged by dedicated alternators on each engine Mastervolt 24/2500 VA inverter with transfer switch Mastervolt 24/1500 inverter for entertainment system

Navigation and Electronic Systems

All the navigation, autopilot, communication, computer and stereo (+ TV in saloon) were new in 2013

Navigation Instruments B&G Hydra 3000 Cruise sailing instruments Hydra main processor NMEA FFD at nav station 7 x Non-NMEA FFD's (4 in cockpit, chart table, aft cabin, forepeak) 6 x 20/20's Rudder angle display Furuno Radar M-1833C at chart table 2x Furuno GDC-1700C chart plotters one at each helm Backup radar Furuno GDC 1700 at nav station with 45cm antenna on mast Furuno GPS GP-33 Radar antenna on 2x Suunto 5" steering compasses Autopilot System B&G Hydra 3000 Rexroth twin rams Meridian constant running pump Display at helm and nav station Computer Systems Dell Optiplex computer with 17" monitor Printer MaxSea 3D software **Communications Systems** Furuno weatherfax/navtex receiver (NAVNET) Furuno SSB T&T F33 satellite receiver Iridium SC 4000 telephone Furuno FM 2721 VHF with handset at helm and nav station (doubles as intercom) Icom HF 1 x Icom Handheld VHF 1 x EPIRB **Entertainment Systems** 40" Samsung HD digital TV in saloon on starboard side saloon Bose Acoustimass 5.1 surround sound in saloon, subwoofer under table Samsung Blue Ray Disk

Sails and Rigging

MAST & RIGGING Offshore Spars standard modulus carbon fiber four-spreader fractional rig, discontinuous rod standing rigging and 25 degree swept back spreaders Carbon fiber park avenue boom with internal lights Spinnaker track on mast Track on boom for sun awning Halyards led internally 3 x Reefing lines led to mast base Lazy jacks with jammers on mast

Mast was out of the boat 2017-8 at Nautor service yard in Scarlino and fully checked including testing of rod rigging, parts refitted and replaced as needed and mast re-spotted.

SAILS All by North, Italy MAINSAIL, Spectra/Carbon new 2015 GENOA, Spectra/Carbon new 2015 STAYSAIL, Spectra/Carbon new 2016 GENNAKER, 2009

Hydraulic Systems Bosch Rexroth hydraulic power pack operating Genoa furler and mainsail traveler Manual rigging hydraulics by Navtec operating: Vang Backstay Staysail Halyard Genoa Halyard Outhaul

Accessories **General Equipment** CQR 110lbs anchor with 90M of 12mm chain 25Kg Fortress anchor in bow locker (10m chain, 80m rope) Fenders 100m mooring line Boat Hook Flag pole Suction lifters for floor boards Cockpit table with fridge unit built in. Combined bathing/swimming ladder Sounding rods for fuel/water tanks 6 x camping gaz bottle **Canvas Work** Sprayhood over main companionway Retractable bimini over guest cockpit Bimini over helm Steering wheel covers Padded cover for cockpit and saloon tables Mainsail cover Sun awning (over the boom) white (2015) **Safety Equipment** Softex total flooding fire extinguisher system for engine and generator space (remote controlled) Portable fire extinguishers in interior Deck jackstays in webbing Safety belts for navigator and cook 1 x 10 person liferaft

Исключения

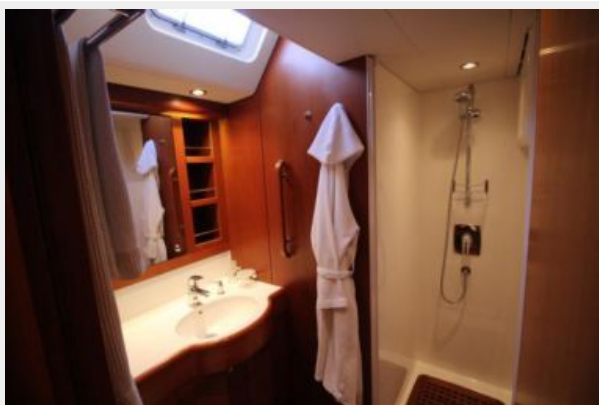
При продаже яхты исключаются личные вещи владельца.

Отказ от ответственности

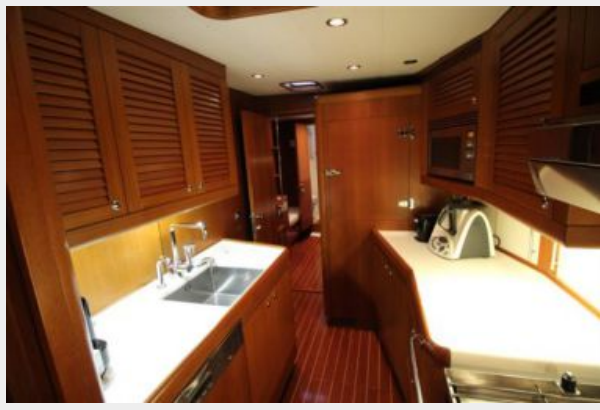
Компания предоставляет описание судна или яхты добросовестно, но не может гарантировать точность этой информации, а также не ручается за техническое состояние. Покупатель должен проинструктировать своих агентов или оценщиков исследовать представленную информацию более подробно, по собственному желанию. Продажа судна или яхты, изменение цены или снятие с продажи будет происходить без предварительного уведомления.

ФОТОГРАФИИ









КОНТАКТЫ

Андрей Шестаков (Andrey Shestakov) – ведущий яхтенный брокер отдела продаж яхт и судов компании Shestakov Yacht Sales Inc. Официальный представитель Shestakov Yacht Sales Inc. для русскоговорящих клиентов в центральном офисе компании в Майами/Форт Лодердейл/Флорида/США.

Контактная информация

Email: andrey@shestakovyachtsales.com

Web: shestakovyachtsales.com

Телефоны

Краснодарский край: **+7(918)465-66-44**

США, Майами, Флорида: **+1(954)274-4435**

Время работы

Понедельник – Суббота: **9:00 - 21:00**
EDT

Воскресенье: **Закрито**

Адрес



Harbour Towne Marina, 850 NE 3rd St,
STE 213, Dania, FL 33004