

PIPE DREAM — TIARA



Судостроитель: TIARA

Год постройки: 2015

Модель: Моторная яхта

Цена: **ЦЕНА ЯХТЫ ПО ЗАПРОСУ**

Местонахождение: United States

Длина общая: 54' 6" (16.61m)

Ширина: 15' 11" (4.85m)

Макс. осадка: 4' 6" (1.37m)

Крейс. скорость: 27 Kts. (31 MPH)

Макс. скорость: 34 Kts. (39 MPH)

Купить **Pipe Dream — TIARA** а также выбрать подходящую вам яхту из нашего **каталога яхт** вам поможет опытный яхтенный брокер Андрей Шестаков. На сегодняшний день компания **Shestakov Yacht Sales Inc.** имеет большое количество яхт в **собственном списке продаж**, а также тесно сотрудничает со всеми крупными яхтенными производителями по всему миру.

Для того чтобы купить яхту **Pipe Dream — TIARA** а также проконсультироваться по любому вопросу связанному с покупкой, продажей, чартером яхт позвоните по телефону **+7(918)465-66-44**.

ОГЛАВЛЕНИЕ

ОГЛАВЛЕНИЕ	2
ХАРАКТЕРИСТИКИ	5
Обзор	5
Основная информация	5
Размеры	5
Скорость, вместимость и масса	6
Размещение	6
Корпус и палуба	6
Информация о двигателе	6
ПОДРОБНОЕ ОПИСАНИЕ	7
Steering System	7
Hull and Deck	7
Interior Group	7
Instrumentation, Safety and Equipment	7
Aft Cockpit	8
Salon & Helm Area	8
Flybridge	9
Factory Installed Options	9
Additional Electronics	10
Исключения	10
Отказ от ответственности	10
ФОТОГРАФИИ	11
Tiara 50 Flybridge Salon	11
Tiara 50 Flybridge Galley	11
Tiara 50 Flybridge Galley	11
Tiara 50 Flybridge Salon/Galley	11
Tiara 50 Flybridge Helm	11
Tiara 50 Flybridge Salon	11

Tiara 50 Flybridge Salon	12
Tiara 50 Flybridge Salon	12
Tiara 50 Flybridge Salon	12
Tiara 50 Flybridge Helm	12
Tiara 50 Flybridge Master Stateroom	12
Tiara 50 Flybridge Master Stateroom	12
Tiara 50 Flybridge Master Stateroom	13
Tiara 50 Flybridge Master Head	13
Tiara 50 Flybridge Guest Head	13
Tiara 50 Flybridge Washer/Dryer	13
Tiara 50 Flybridge Forward Stateroom	14
Tiara 50 Flybridge Forward Stateroom	14
Tiara 50 Flybridge Guest Head	14
Tiara 50 Flybridge Forward Stateroom	14
Tiara 50 Flybridge Guest Head	15
Tiara 50 Flybridge Third Guest Stateroom	15
Tiara 50 Flybridge Engine Room	15
Tiara 50 Flybridge Engine Room	15
Tiara 50 Flybridge Engine Room	15
Tiara 50 Flybridge Engine Room	15
Tiara 50 Flybridge Engine Room	15
Tiara 50 Flybridge Cockpit	16
Tiara 50 Flybridge Cockpit	16
Tiara 50 Flybridge Cockpit	16
Tiara 50 Flybridge Cockpit Seating Cover	16
Tiara 50 Flybridge Transom	16
Tiara 50 Flybridge Seating Cover	16
Tiara 50 Flybridge Transom Storage	17
Tiara 50 Flybridge Transom	17
Tiara 50 Flybridge Grill	17

Tiara 50 Flybridge Transom Storage	17
Tiara 50 Flybridge - Flybridge Enclosure	17
Tiara 50 Flybridge - Flybridge Wetbar	17
Tiara 50 Flybridge Upper Helm	18
Tiara 50 Flybridge - Flybridge Seating	18
Tiara 50 Flybridge - Flybridge Seating	18
Tiara 50 Flybridge - Flybridge Wetbar	18
Tiara 50 Flybridge - Flybridge Refrigerator	18
Tiara 50 Flybridge - Flybridge Wetbar	18
Tiara 50 Flybridge - Flybridge Seating	19
Tiara 50 Flybridge - Flybridge Seating	19
Tiara 50 Flybridge - Flybridge	19
Tiara 50 Flybridge Cockpit	19
Tiara 50 Flybridge	19
КОНТАКТЫ	20
Контактная информация	20
Телефоны	20
Время работы	20
Адрес	20

ХАРАКТЕРИСТИКИ

Обзор

Powered by twin Volvo Penta IPS 950's with joystick Plus control and boasting a proven and seaworthy hull "Pipe Dream" is nothing short of a joy to be on. She is in like-new condition and has been maintained to the highest standards. "Pipe Dream" is loaded with numerous factory installed options such as Nautical Structures hydraulic swim platform, third stateroom, electric grill, flybridge 28k BTU air conditioning, Volvo IPS joystick docking and Position Hold just to name a few. Tiara warranty is in place until July 2018 and Volvo Factory ESC until August 2020. Don't miss this opportunity and call now to schedule a showing.

Additional Electronics:KVH Tracvision TV5(2) DIRECTV receivers with IR remote controlIRF remote control kitGarmin reverse color dome camera, mini color domed day/night waterproof camera with built-in infra-red LED

Основная информация

Тип судна: Моторная яхта

Подкатегория: Flybridge

Модельный год: 2015

Год постройки: 2015

Страна: United States

Размеры

Длина общая: 54' 6" (16.61m)

Ширина: 15' 11" (4.85m)

Макс. осадка: 4' 6" (1.37m)

Длина привального бруса: 50' 0"
(15.24m)

Скорость, вместимость и масса

Крейс. скорость: 27 Kts. (31 MPH)

Макс. скорость: 34 Kts. (39 MPH)

Вместимость воды: 200 Gallons

Вместимость сточного бака: 80 Gallons

Объем топливного бака: 700 Gallons

Размещение

Всего кают: 3

Всего ком. состава: 2

Корпус и палуба

Материал корпуса: Fiberglass

Информация о двигателе

Двигатели: 2

Производитель: Volvo

Модель: IPS2-D11

Тип двигателя: Inboard

Тип топлива: Diesel

ПОДРОБНОЕ ОПИСАНИЕ

Steering System

Joystick Control

Hull and Deck

- Custom diamond pattern non-skid deck & cockpit Surfaces Fresh White Gelcoat Hull & Deck
- DuPont Solid Painted Bootline (Color Carbon)
- Hull Constructed w/Gelcoat Outer Layer, Balsa Cored Hullsides
- Deck Constructed w/Gelcoat Outer Layer, Balsa Coring
- Deck Side Engine Intake System
- Bronze Seacocks on all Underwater Thru-Hull Fittings
- Tiara Custom Diamond Pattern Non-Skid Deck & Cockpit Surfaces
- Wood and Foam Core Stringers, Encapsulated by Hand Laid Fiberglass, are Integrated to the Hull.
- Gelcoat & Fiberglass-Lined Areas
- Molded in Hullside Windows w/Opening Ports
- Poly Rubrail w/316L S.S. Cap
- Eight (8) 12" S.S. Cleats for Lines
- Tiara Custom Composite Flybridge, Aluminum Windshield Frame w/Tempered Safety Glass, Safety Handrails & a Windshield Wiper System w/Three Washer Wipers Hardtop Includes Powered Sun Roof
- LED Navigation & Courtesy Lights

Interior Group

- Architectural Teak & Wenge Interior Wood With Grain Filled Finish & Chilewich Wall Covering Throughout
- Solid Teak Floor in Salon, Lower Atrium, Utility Room, and VIP/Forward Stateroom Master Stateroom & Risers in Forward VIP Stateroom are Carpeted
- Amtico Floor in Salon; Carpeted Lower Atrium and Staterooms
- 120V Outlets Throughout
- 12V Lighting Throughout
- Eight (8) Decorative Throw Pillows
- Three Skylights With Built-In Blinds

Instrumentation, Safety and Equipment

- Tiara Custom 12V/24V DC & 120V AC Electrical System w/Master Distribution Panels in the Galley
- One 240V AC 50 Amp 65' Dockside Power Cord w/Glendinging Cable Recoiler & Adapter for 30 Amp Service
- Cable TV Inlets/Outlets w/65' Dockside Cord
- TV & AM/FM Radio Antennas
- Onan 13.5Kw Diesel Generator w/Sound Shield & Helm Indicator
- Battery Charger (2), 80 Amp & 16 Amp
- 12V/24V Multiple Bank Battery System w/Batteries & Remote Battery Switches (four (4) Engine Batteries and Six(6) House Batteries
- Electrical Bonding System
- Volvo Active Corrosion Protection
- Volvo Electronic Engine Controls & Steering System
- Volvo IPS Joystick Plus Control
- High Output Alternators
- Engine Room Acoustical Insulation w/24V Lighting
- Racor Fuel Filters/Water Separators, Engines & Generator
- Raw Water Intake Strainers, Engines & Generator

Aft Cockpit

- (3) Sided Cockpit Cover
- Storage
- Molded-in Forward Facing Lounge
- Fiberglass Cockpit Table w/Hi-Lo Actuator
- Molded-Steps to Deck Walkways & Swim Platform
- Cockpit LED Courtesy Lighting w/Remote Control
- Port and Starboard Cockpit Aft Facing Seats w/Storage Below
- Satellite Radio-Ready Clarion Stereo(Salon) w/MP3/iPod USB Port
- Two (2) JL Audio Spkrs, One (1) JL Audio Subwoofer, Amp/Remote
- Weather Covers for Cockpit Furniture

Salon & Helm Area

- Aft Window & Sliding Doors with Duette Blinds
- Duette Blinds for Port & Starboard Salon Windows
- 40" LCD TV Mounted on a Hi-lo Actuator & Storage Compartment
- Blu-Ray DVD Player
- Polk Audio HT3000 Surroundbar
- Marine Air Systems 40,000 BTU Salon Air Conditioning System
- Helm w/Electric Engine Display, Flush Mount Electronics Cap, Drink Holders, 12V & 120V Outlets, & 17.5 Leather Steer-Wheel

- Opening Port & Starboard Side Windows
- Captains Chair w/Vertical, Fore & Aft Adjustment - Seat and a 1/2
- Co-Pilot Chair w/Fore & Aft Slide, Adjustable Backrest For Facing Forward or Aft
- Port Sofa w/Storage & Dining/Coffee Table on Hi-Lo
- Volvo Glass Cockpit w/Integrated Electronics & Elect. Platform

Flybridge

- Stainless Steel Floating Steps with Teak Step treads
- Access Hatch for Flybridge Steps
- Double Wide Helm Seat on Electric Slide
- Centerline Console with Garmin Electronics Package
- Hardtop with Arch and Forward Supports, Two(2) Bowmar Hatches, and Safety Railings
- Climate Control System, 16,000 BTU's.
- Entertainment Center with Refrigerator Sink, Cutting Board, Trash Receptacle, and Storage
- Starboard Lounge with Top Access Insulated Cooler Aft
- Port Lounge with Top Access Storage Aft
- Aft Sun Lounge, Convert to Forward and Aft Facing Seating
- Clarion CMS5 Head Unit Powered by JL Audio M Series Digital Amp with Four(4) JL Audio Component Speakers and JL Audio 8" Subwoofer with Tuned Enclosure Clarion Unit Accepts USB/MP3 and Has Integrated Bluetooth
- Weather Covers for Helm Console, Helm Chairs, and Aft Sun Lounge
- Red/White/Blue LED Hardtop Lights

Factory Installed Options

- Anchor Locker Washdowns: Fresh Water
- Macerator System for Heads
- Nautical Structures Hydraulic Swim Platform
- Dirt Devil Central Vacuum System
- Electric Grill (Transom)
- ACR RCL 100 Remote Spotlight
- Anti-Fouling Bottom Paint (Black)
- Ice Maker, Starboard Galley Aft
- Flatscreen LCD TV, Fwd VIP Stateroom
- Third Stateroom in Lieu of Std Utility Room
- Washer/Dryer Combination Unit in Master Stateroom
- Underwater Lights (3) Blue
- Lenco Autotrim
- Aft Cockpit Carpet Sisal Seagrass
- All Chain Windless w/Remote
- Teak Aft Cockpit Table w/Ottomans

- Flat Screen LCD TV and Blue Ray 3rd Stateroom
- Flybridge Icemaker
- Flybridge Enclosure 4-Sided
- Flybridge 28K BTU A/C
- Full Port Dresser, Master Stateroom
- Garmin Glass Cockpit Integrated Electronics Package: (Two Volvo 15" Displays w/Grid Armrest Remote, Volvo Autopilot, Joystick Driving, GPS Antenna, Garmin 604 HD 4 Ft/6Kw Open Array Radar and Pedestal, Garmin VHF200 & GHS10 Handheld Radios, Garmin GSD24 Sounder, 1Kw Transducer)

Additional Electronics

- KVH Tracvision TV5
- (2) DIRECTV receivers with IR remote control
- RF remote control kit
- Garmin reverse color dome camera, mini color domed day/night waterproof camera with built-in infra-red LED

Исключения

При продаже яхты исключаются личные вещи владельца.

Отказ от ответственности

Компания предоставляет описание судна или яхты добросовестно, но не может гарантировать точность этой информации, а также не ручается за техническое состояние. Покупатель должен проинструктировать своих агентов или оценщиков исследовать представленную информацию более подробно, по собственному желанию. Продажа судна или яхты, изменение цены или снятие с продажи будет происходить без предварительного уведомления.

ФОТОГРАФИИ

Tiara 50 Flybridge Salon



Tiara 50 Flybridge Galley



Tiara 50 Flybridge Galley



Tiara 50 Flybridge Salon/Galley



Tiara 50 Flybridge Helm



Tiara 50 Flybridge Salon



Tiara 50 Flybridge Salon



Tiara 50 Flybridge Salon



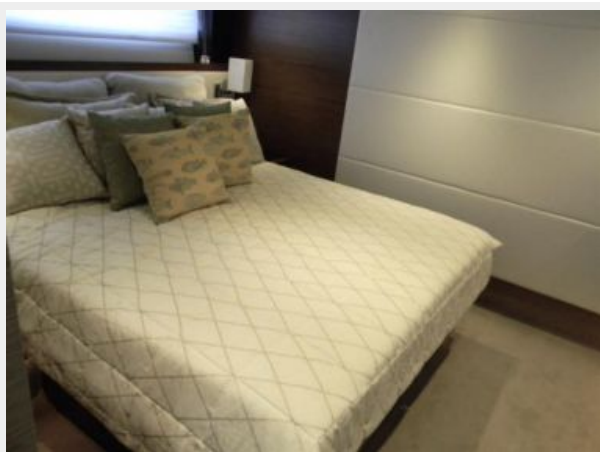
Tiara 50 Flybridge Salon



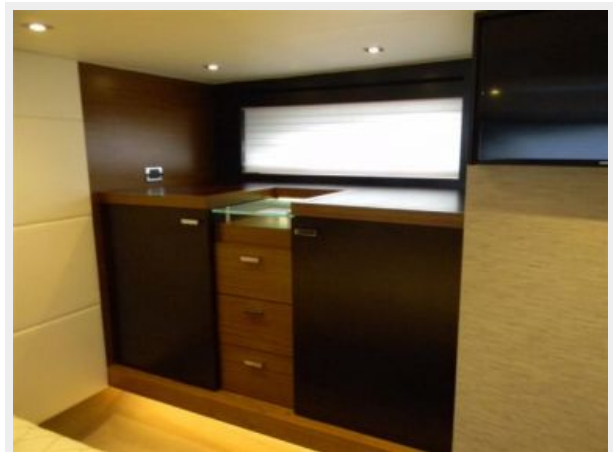
Tiara 50 Flybridge Helm



Tiara 50 Flybridge Master Stateroom



Tiara 50 Flybridge Master Stateroom



Tiara 50 Flybridge Master Stateroom



Tiara 50 Flybridge Master Head



Tiara 50 Flybridge Guest Head



Tiara 50 Flybridge Washer/Dryer



Tiara 50 Flybridge Forward Stateroom



Tiara 50 Flybridge Forward Stateroom



Tiara 50 Flybridge Forward Stateroom



Tiara 50 Flybridge Guest Head



Tiara 50 Flybridge Guest Head



Tiara 50 Flybridge Third Guest Stateroom



Tiara 50 Flybridge Engine Room



Tiara 50 Flybridge Engine Room



Tiara 50 Flybridge Engine Room



Tiara 50 Flybridge Engine Room



Tiara 50 Flybridge Cockpit



Tiara 50 Flybridge Cockpit



Tiara 50 Flybridge Cockpit



Tiara 50 Flybridge Cockpit Seating Cover



Tiara 50 Flybridge Transom



Tiara 50 Flybridge Seating Cover



Tiara 50 Flybridge Transom Storage



Tiara 50 Flybridge Transom



Tiara 50 Flybridge Transom Storage



Tiara 50 Flybridge Grill



Tiara 50 Flybridge - Flybridge Enclosure



Tiara 50 Flybridge - Flybridge Wetbar



Tiara 50 Flybridge Upper Helm



Tiara 50 Flybridge - Flybridge Seating



Tiara 50 Flybridge - Flybridge Seating



Tiara 50 Flybridge - Flybridge Wetbar



Tiara 50 Flybridge - Flybridge Refrigerator



Tiara 50 Flybridge - Flybridge Wetbar



Tiara 50 Flybridge - Flybridge Seating



Tiara 50 Flybridge - Flybridge Seating



Tiara 50 Flybridge - Flybridge



Tiara 50 Flybridge Cockpit



Tiara 50 Flybridge



КОНТАКТЫ

Андрей Шестаков (Andrey Shestakov) – ведущий яхтенный брокер отдела продаж яхт и судов компании Shestakov Yacht Sales Inc. Официальный представитель Shestakov Yacht Sales Inc. для русскоговорящих клиентов в центральном офисе компании в Майами/Форт Лодердейл/Флорида/США.

Контактная информация

Email: andrey@shestakovyachtsales.com

Web: shestakovyachtsales.com

Телефоны

Краснодарский край: **+7(918)465-66-44**

США, Майами, Флорида: **+1(954)274-4435**

Время работы

Понедельник – Суббота: **9:00 - 21:00**
EDT

Воскресенье: **Закрето**

Адрес



Harbour Towne Marina, 850 NE 3rd St,
STE 213, Dania, FL 33004