

RED DOLPHIN — AMERICAN TUG



Судостроитель: AMERICAN TUG

Год постройки: 2005

Модель: Raised Pilothouse

Цена: **ЦЕНА ЯХТЫ ПО ЗАПРОСУ**

Местонахождение: Canada

Длина общая: 41' 0" (12.50m)

Ширина: 15' 10" (4.83m)

Мин. осадка: 4' 10" (1.47m)

Макс. осадка: 4' 10" (1.47m)

Крейс. скорость: 10 Kts. (12 MPH)

Макс. скорость: 16 Kts. (18 MPH)

Купить **Red Dolphin — AMERICAN TUG** а также выбрать подходящую вам яхту из нашего каталога яхт вам поможет опытный яхтенный брокер Андрей Шестаков. На сегодняшний день компания **Shestakov Yacht Sales Inc.** имеет большое количество яхт в собственном списке продаж, а также тесно сотрудничает со всеми крупными яхтенными производителями по всему миру.

Для того чтобы купить яхту **Red Dolphin — AMERICAN TUG** а также проконсультироваться по любому вопросу связанному с покупкой, продажей, чартером яхт позвоните по телефону **+7(918)465-66-44**.

ОГЛАВЛЕНИЕ

ОГЛАВЛЕНИЕ	2
ХАРАКТЕРИСТИКИ	4
Обзор	4
Основная информация	4
Размеры	4
Скорость, вместимость и масса	4
Размещение	5
Корпус и палуба	5
Информация о двигателе	5
ПОДРОБНОЕ ОПИСАНИЕ	6
41' American Tug Vessel Walkthrough	6
41' American Tug Accommodations	6
41' American Tug Salon	6
41' American Tug Galley	6
41' American Tug Dining	7
41' American Tug Master Stateroom	7
41' American Tug Guest Stateroom	7
41' American Tug Laundry	7
41' American Tug Pilothouse	7
41' American Tug Aftdeck	7
41' American Tug Audio/Visual Equipment	8
41' American Tug Electronics	8
41' American Tug Electrical System	8
41' American Tug Engine/Mechanical Equipment	9
41' American Tug Deck Equipment	9
41' American Tug Tender	10
41' American Tug Safety and Fire Protection	10
41' American Tug Exclusions	11

41' American Tug Disclaimer	11
Исключения	11
Отказ от ответственности	11
ФОТОГРАФИИ	12
1	12
КОНТАКТЫ	23
Контактная информация	23
Телефоны	23
Время работы	23
Адрес	23

ХАРАКТЕРИСТИКИ

Обзор

Red Dolphin is a 2005 41' American Tug pilothouse model in nice condition. She offers a single Cummins main engine, 8 kW Northern Lights generator, bow and stern thrusters, 3,000 watt inverter, Yachtcontroller wireless control system and a clean, uncluttered interior. Her 13'1" capable height makes her a terrific Great Loop candidate.

Основная информация

Тип судна: Raised Pilothouse

Подкатегория: Trawler Yacht

Модельный год: 2005

Год постройки: 2005

Страна: Canada

Размеры

Длина общая: 41' 0" (12.50m)

Длина по ватерлинии: 37' 9" (11.51m)

Ширина: 15' 10" (4.83m)

Мин. осадка: 4' 10" (1.47m)

Макс. осадка: 4' 10" (1.47m)

Трапы: 13' 1" (3.99m)

Скорость, вместимость и масса

Крейс. скорость: 10 Kts. (12 MPH)

Макс. скорость: 16 Kts. (18 MPH)

Водоизмещение: 30000 Pounds

Вместимость воды: 210 Gallons

Вместимость сточного бака: 55 Gallons **Объем топливного бака:** 640 Gallons

Размещение

Всего кают: 2

Всего коек: 2

Спальные места: 4

Всего ком. состава: 2

Корпус и палуба

Материал корпуса: Fiberglass

Материал палубы: Composite Fiberglass

Комплектация корпуса: Modified V-Hull

Отделка корпуса: Stainless Steel

Информация о двигателе

Двигатели: 1

Производитель: Cummins

Модель: QSC8.3-M

Тип двигателя: Inboard

Тип топлива: Diesel

ПОДРОБНОЕ ОПИСАНИЕ

41' American Tug Vessel Walkthrough

Entering the salon from the covered aftdeck, you will find a built-in settee and folding teak table to starboard, entertainment center/cabinetry starboard forward, the galley port forward and space for a lounge chair port aft. The pilothouse steps are starboard forward. Once in the pilothouse, you will find a side deck access door on each side, benchseat and table port aft and a desk starboard aft. Step down starboard forward into the guest foyer and find a guest stateroom and ensuite head with enclosed shower forward and the master stateroom with ensuite head and enclosed shower amidships. Engine room access is via two salon sole hatches.

Headroom is 6'11" in the guest stateroom, 6'3" in the master stateroom, 6'10" in the pilothouse and 6'9" in the salon.

41' American Tug Accommodations

Red Dolphin offers a master stateroom amidships with a queen size berth and an ensuite head and enclosed shower, and a guest stateroom forward with a double size berth and ensuite head with enclosed shower.

41' American Tug Salon

The salon offers L-shaped seating with a hi/lo, folding teak table to starboard, entertainment center and cabinetry starboard forward, cabinetry and space for a lounge chair port aft, opening side and aft windows with screens and blinds, carpet, reading lights and a Diamond Seaglaze door aft. To view a 360 degree photo of the salon, copy and paste the link below into your browser:

41' American Tug Galley

The galley is located port forward in the salon.

- Nova-Kool refrigerator/freezer
- Sharp Carousel microwave
- Princess Gourmet 3-burner ceramic electric cooktop and oven
- Double molded-in sinks
- Solid surface countertop

- Storage drawers and cabinets
- U-Line icemaker in the pilothouse

41' American Tug Dining

Dining space is available at the salon table and the pilothouse table.

41' American Tug Master Stateroom

The master stateroom is located amidships and offers a queen size berth, nightstands, reading lights, 2 portlights, carpet, full-length mirror, hanging locker, storage drawers and an ensuite head with enclosed shower. To view a 360 degree photo of the master stateroom, copy and paste the link below into your browser:

41' American Tug Guest Stateroom

The guest stateroom is forward and offers a double size berth, reading lights, 2 portlights, overhead hatch with a screen, storage cabinets and drawers, carpet and an ensuite head with enclosed shower. To view a 360 degree photo of the guest stateroom, copy and paste the link below into your browser:

41' American Tug Laundry

Bosch washer and dryer

41' American Tug Pilothouse

The pilothouse offers a full helm forward with storage underneath, Pompanette Platinum Series helmseat, a benchseat (storage underneath) and table aft, chart counter and electrical panel port forward, side deck access door on each side, opening side windows, a desk starboard aft and teak & holly sole. To view a 360 degree photo of the raised pilothouse, copy and paste the link below into your browser:

41' American Tug Aftdeck

The covered aftdeck offers a non-skid deck, transom door to the fiberglass swimplatform, molded-in steps to each side deck, stainless steel ladder to the flybridge, storage locker with a stainless steel sink and lazarette access. To view a 360 degree photo of the aftdeck, copy and paste the

link below into your browser:

41' American Tug Audio/Visual Equipment

- Sharp Aquos flat screen TV in the salon
- Clarion Pro Audio DXZ445 Sirius ready stereo/CD player in the salon
- Jensen VM9214 DVD player in the salon

41' American Tug Electronics

- Raymarine Radar
- Raymarine C120 multi-function display
- Raymarine ST6001 SmartPilot autopilot
- Raymarine ST60 Tridata depth/speed/log display
- Raymarine 650 AIS Transceiver (2016)
- Standard Horizon Quantum GX5500S VHF (2016)
- Ritchie Powerdamp magnetic compass

41' American Tug Electrical System

- Northern Lights M753K3 8 kW generator with approximately 847 hours
- Xantrex ProWatt 3000 inverter
- 50 amp shore cord
- Glendinning shore power cord system
- Charles 60 amp battery charger
- 3 X Lifeline 8D AGM house batteries (2011)
- 1 X Lifeline 8D AGM engine/generator start battery (2011)
- 1 X 4D AGM thruster/windlass battery
- Blue Seas electrical panel

- 12vdc outlet at the helm

41' American Tug Engine/Mechanical Equipment

- Single Cummins QSC8.3M 540 hp main engine with approximately 2,027 hours (Clean oil analysis reports available) (Engine serviced annually since 2011 - coolant flushed and replaced, turbo wastegate rebuilt in 2016)
- Twin Disc 5075-A gearbox
- Dripless shaft seal
- Shaft Shark line cutter (2016)
- New Cutlass bearing in 2016
- Marine Hardware sea strainers
- Cummins Mercruiser Smartcraft engine display
- Capilano hydraulic steering system
- Dual Racor 75900MAX fuel filters with vacuum gauge
- Reverso oil change system
- Sidepower bow and stern thrusters
- Yachtcontroller wireless control system
- Marine Air Systems reverse cycle air conditioning/heating system
- King electric heating system
- American Tug tank monitoring system
- Seaward stainless steel 20 gallon water heater
- Fresh water pump (2016)
- Seavac central vacuum system
- Vacuflush heads

41' American Tug Deck Equipment

- Lofrens Tigres TG 010529 anchor windlass with foot controls (2011)

- Double stainless steel anchor rollers
- SL-Claw 20 kg anchor
- CQR 45 lb anchor
- 265' 5/16" anchor chain
- Washdown fore and aft
- Non-skid deck
- Stainless steel rails
- Stainless steel deck hardware
- 2 X rod holders
- Hot/cold fresh water shower on the aftdeck
- Fiberglass swimplatform
- Stainless steel swim ladder
- Stainless steel swimplatform hoop rails
- Bottom painted with Interlux Micron CSC in 2016
- Hull painted with Awlgrip in 2011

41' American Tug Tender

- Highfield CL290 RIB tender (2015)
- Torqueedo Travel 1003S electric outboard (2016)
- Pacific Fabricators 1,000 lb tender davit (Serviced and line replaced in 2016)

41' American Tug Safety and Fire Protection

- Fireboy FE241 engine room fire suppression system
- Fireboy emergency engine shutdown system
- Framm A-23 horns
- Lifering

- Lifesling Overboard Rescue System
- Rule bilge pumps
- Bilge high water alarm
- Fire extinguishers
- Safe-T-Alert carbon monoxide detector

41' American Tug Exclusions

- Seller's personal belongings

41' American Tug Disclaimer

The Company offers the details of this vessel in good faith but cannot guarantee or warrant the accuracy of this information nor warrant the condition of the vessel. A buyer should instruct his agents, or his surveyors, to investigate such details as the buyer desires validated. This vessel is offered subject to prior sale, price change, or withdrawal without notice.

Исключения

При продаже яхты исключаются личные вещи владельца.

Отказ от ответственности

Компания предоставляет описание судна или яхты добросовестно, но не может гарантировать точность этой информации, а также не ручается за техническое состояние. Покупатель должен проинструктировать своих агентов или оценщиков исследовать представленную информацию более подробно, по собственному желанию. Продажа судна или яхты, изменение цены или снятие с продажи будет происходить без предварительного уведомления.

ФОТОГРАФИИ

1



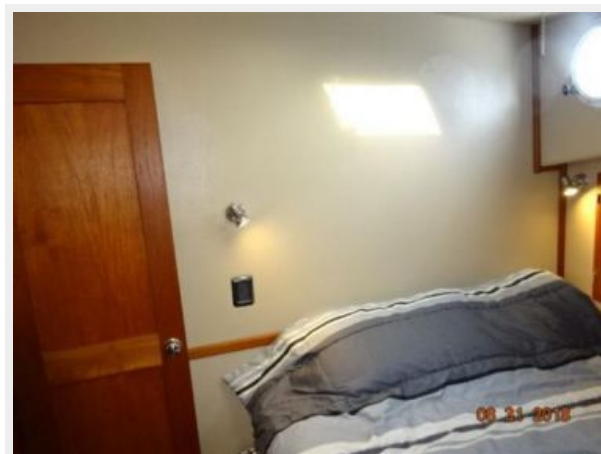






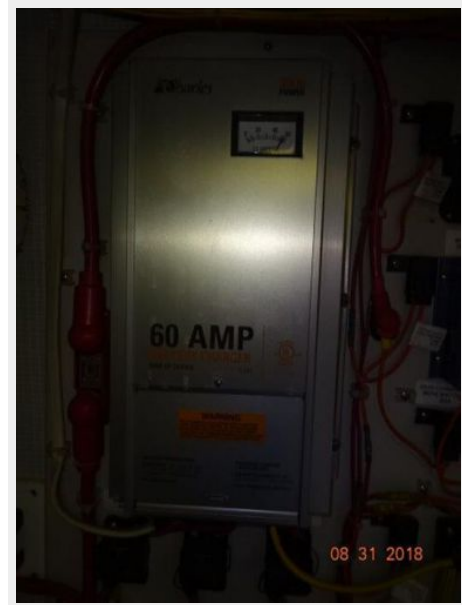


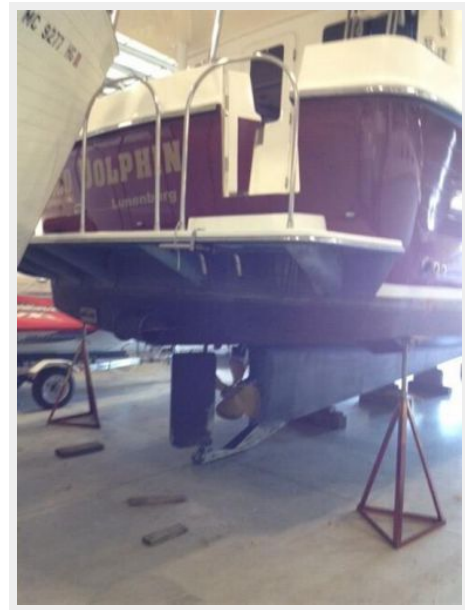












КОНТАКТЫ

Андрей Шестаков (Andrey Shestakov) – ведущий яхтенный брокер отдела продаж яхт и судов компании Shestakov Yacht Sales Inc. Официальный представитель Shestakov Yacht Sales Inc. для русскоговорящих клиентов в центральном офисе компании в Майами/Форт Лодердейл/Флорида/США.

Контактная информация

Email: andrey@shestakovyachtsales.com

Web: shestakovyachtsales.com

Телефоны

Краснодарский край: **+7(918)465-66-44**

США, Майами, Флорида: **+1(954)274-4435**

Время работы

Понедельник – Суббота: **9:00 - 21:00**
EDT

Воскресенье: **Закрито**

Адрес



Harbour Towne Marina, 850 NE 3rd St,
STE 213, Dania, FL 33004