

WAUQUIEZ - PILOT SALOON 55 — WAUQUIEZ



Builder: WAUQUIEZ

Year Built: 2013

Model: Pilothouse Cutter

Price: PRICE ON APPLICATION

Location: Spain

LOA: 58' 1" (17.70m)

Beam: 16' 3" (4.95m)

Max Draft: 7' 11" (2.40m)

Our experienced yacht broker, Andrey Shestakov, will help you choose and buy a yacht that best suits your needs **WAUQUIEZ - PILOT SALOON 55 — WAUQUIEZ** from our catalogue. Presently, at Shestakov Yacht Sales Inc., we have a wide variety of yachts available on our sale's list. We also work in close contact with all the big yacht manufacturers from all over the world.

If you would like to buy a yacht **WAUQUIEZ - PILOT SALOON 55 — WAUQUIEZ** or would like help answering any questions concerning purchasing, selling or chartering a yacht, please call **+1(954)274-4435**

TABLE OF CONTENTS

| | |
|---------------------------|----|
| TABLE OF CONTENTS | 2 |
| SPECIFICATIONS | 3 |
| Overview | 3 |
| Basic Information | 8 |
| Dimensions | 8 |
| Accommodations | 9 |
| Hull and Deck Information | 9 |
| Engine Information | 9 |
| PHOTOS | 10 |
| CONTACTS | 16 |
| Contact details | 16 |
| Telephones | 16 |
| Office hours | 16 |
| Address | 16 |

SPECIFICATIONS

Overview

Main information:

- GRP/Balsa sandwich hull built with the infusion process, ensuring an optimized resin / glass fibre ratio.
- Hull protected with a bisphenolic resin on outer layers of sandwich.
- Composite hull structural grid (« open » type), glassed and glued to the hull (acrylatic urethane).
- GRP/Balsa sandwich deck bonded to the hull via mechanical fasteners and polyurethane compound at bulwark level.
- Cast iron bulb keel, fastened with stainless steel bolts, nuts and counterplates.
- Rack & pinion transmission steering system with 2 steering wheels; composite rudder shaft.
- Teak side decks, cockpit seats and floor.

Spars and rigging

- Keel stepped anodised aluminium mast (in mast mainsail furling).
- 3 sets of aft swept spreaders
- Anodised aluminium boom.
- Rigid boom vang.
- Facnor® (or similar) Solent jib furler with tack on swivel.
- Single strand stainless steel rigging: double backstay, forestay, lower, intermediate and upper shrouds.
- Hull side fitted upper and lower chain plates.
- Running rigging: Main and jib halyards, boom topping lift, main and jib sheets, jib furling line alongside bulwark.

Deck fittings

- 2 x Andersen® (or similar) FS 62 electric stainless steel multifunction winches close to the steering positions.
- 2 sets of deck stoppers on cockpit coamings to port and starboard.
- 1 x Andersen® 46.2 FS (or similar) stainless steel halyard winch on mast.
- Mainsheet system led to multifunction winch.
- Self-tacking jib rail with ball bearing car (sheet led aft via interior of mast).
- Turning blocks at mast step and cockpit coamings.
- Ball bearing “black magic” HARKEN (or similar) blocks.

Mooring

- 40 Kg / 88 lbs Delta anchor with 50 m (164') 12mmØ chain and 50 m (164') 22mmØ warp.

- 6 + 2 fenders with socks.
- 6 mooring lines.

Deck equipment

- Tilting, teack slatted electric aft platform with remote control.
- Folding stainless steel swim ladder, recessible in aft platform.
- 1 shore power inlet on transom with cable.
- Fresh water inlet.
- Liferaft storage under cockpit.
- 2 steering positions with navigation equipment panels, 2 electronic engine control levers and engine panel to starboard steering position.
- Compass mounted on cockpit table.
- 2 lockers in front of steering stations with lids shaped as cockpit / side decks access steps.
- Emergency tiller.
- 2 large lockers on each side of aft platform with storage bags.
- Gas struts on cockpit lockers lids.
- Storage compartments on each side of roof close to companionway.
- 2 winch handle boxes.
- Cold molded teak folding cockpit table, stainless steel handrail and integrated compass.
- 4 polished aluminium opening ports in cockpit for natural lighting and ventilation of the aft cabin.
- Composite arch receiving the mainsheet, the cockpit speakers and the cockpit lighting (also supports the optional bimini).
- 2 grab rails on the arches.
- Spray hood (recessible in cabin top) with stainless steel structure and built in grab rails.
- Bulwark covered with solid teak, 8 specific stainless steel fairleads.
- 8 stainless steel mooring cleats.
- Stainless steel fresh water and fuel intake fillers.
- Stainless steel, 760mm high stern pulpit with closing gate, life buoy support, flag mast and outboard engine support.
- "Open" type stainless steel, 760mm high bow pulpit.
- Triple stainless steel lifelines.
- 760mm high stainless steel stanchions with lateral opening gates.
- 2 deck lifelines with recessible attachment chain plates.
- 2 stainless steel handrails on cabin top.
- 2 stainless steel handrails on forward part of cabin top (also can serve as tender supports).
- Manoeuvring lines and main halyard led under cabin top coaming covers above lateral windows.
- Large stained PMMA lateral windows with 3 louvers on each side to protect the 8

opening ports.

- Panoramic stained PMMA forward window.
- 7 polished aluminium opening hatches, 4 fixed portholes and 19 opening ports.
- 1 self-draining fender locker in starboard side- decks.
- 1 self-draining gas locker in port side-decks.
- 2 ventilation dorade boxes on saloon cabin top.
- 2 ventilation dorade boxes with stainless steel protection on forward cabin top.
- Sail locker forward with ventilator on hatch, stainless steel access ladder, grating, sail storage supports and electric bilge pump (optional skipper's cabin with single berth, marine toilet and washbasin).
- Self-draining mooring locker with warp hook, 2000W/24V electric windlass with vertical 12 mm gipsy.
- Stainless steel bow fitting with deck protection, 2 anchor rollers, chain locking system and gennaker attachment fitting.

Inside accommodations

- The interior woodwork of the Pilot Saloon 55 is built in teak and beeswaxed. The floorboards are made in wengé. The deck is doubled with a GRP liner on which foamed vinyl covered slats are fastened. The hull liner is made in teak and / or vinyl covered slats. For an outstanding comfort mattresses are made of memory of form foam and cushions of «Bultex»® double density foam. All berths are equipped with a slatted base and lee cloths and have cold molded teak fiddles around the beddings.

Companionway - Headroom 2,02 m (6'7")

- Recessible stained PMMA companionway hatch board with lock.
- Stained PMMA sliding companionway hatch.
- Curved teak laminated companionway steps with inserted non-skid.
- 2 stainless steel handrails.
- Open wet locker to port.

Saloon - Headroom 2,04 m (6'8")

- One level saloon with panoramic view whether standing, seating at the dining or chart table.
- Stainless steel handrails fitted on the ceiling and to port between the galley and the settee.
- Large technical and engine room under the floorboard.
- «U» shaped dinette to starboard with dining table on double stainless steel footing.
- Extra sliding seat for two.
- Bar, storage under seats and backrests.
- Lounge chairs and navigation seat to port with storage behind backrests.
- Chart table with laptop dedicated space, bookrack and storage.
- 24V/ 230V (or24/115V) electric control panel.
- Navigation instruments panel in brown leather.

- 4 opening hatches and 5 lateral opening ports.

Main saloon to guest cabins gangway

- Locker to starboard.
- Access to batteries.

Galley to port - Headroom 2,02 m (6'7")

- «U» shaped galley port of the companionway.
- 2 lateral opening ports (one directly above stove).
- Stainless steel double sink with hot and cold- water mixer tap.
- Large working space in synthetic marble.
- Stainless steel gimballed 3 burners stove with oven.
- 230 V (or 115V) microwave oven.
- Stainless steel 24V refrigerator (160 l / 42 US Gal.).
- 24V negative cold icebox (160 l / 42 US Gal.)
- Numerous lockers and storage
- Double refuse bin.
- 6 sets dishwasher.
- Exclusive "Wauquiez" crockery for 6 persons.
- Opening hatch in ceiling.

Owner's aft cabin

Headroom: 1,90 m (6'3") & 1,86 m (6'1") under bridge deck.

- Access via gangway to starboard.
 - Double hanging locker to port.
 - Vanity to starboard behind hanging locker, with table, lighting, mirror and seat.
- Centreline bed (2,05 x 1,60 m – 6'6" x 5'2") with drawers under.
- Bedside areas with book storage and reading lamp on each side of bed.
 - Wood slats base under bed (2 parts).
 - Lee cloths.
 - Lockers and storage alongside hull.
 - Lockers and storage under companionway.
 - 5 opening ports and 2 fixed hull portholes.

Aft bathroom

- Deep washbasin with pressurized hot and cold water.
- Lit cabinet with mirror.
- Stainless steel toilet accessories.
- Quietflush or similar electric toilet (fresh water flushing).
- Independent shower compartment with mixer tap, grating and automatic draining pump.

- 1 opening hatch and 2 opening portholes. **Guest cabins forward of saloon Headroom 1,94 m (6'4")**

2 symmetrical double cabins:

- 1,40 x 2,05 m (4'5" X 6'6") double berth
 - Hanging locker
 - Lockers under berth
 - Night shelf above bed head
 - Opening hatch in ceiling
 - Fixed hull porthole
 - Dorade box for ventilation

2 symmetrical guest bathrooms

- Washbasin with hot and cold pressurized water.
- Lit cabinet with mirror.
- Marine porcelain toilet with sea and fresh water flushing system.
- Lateral opening port.
- Central shower with access from both bathrooms and opening hatch above.

Engine equipment

- YANMAR 110HP engine with direct shaft transmission.
- 2 electronic engine control levers at steering positions.
- MaxProp 3 bladed propeller (or similar).

560 l (148 US Gal) total fuel capacity (with decanting filter).

- 12V/815A / 75 Ah. engine start battery.
- Lit engine room with themric/sound insulation.
- 24 V, 117 Kg thrust Maxpower (or similar) bow thruster with independent battery.

Electrics

- 24V circuit with 8 gel batteries (total capacity 540 Ah.).
- Insulated Onan -or similar- 7KVA (11KVA if A/C option) generator (230V or 115V) with 12V start battery.
- 24V / 230V (or 24V / 115V) electric control panel at chart table.
- Mastervolt (or similar) batteries capacity control.
- Recessed LED lamps in ceiling.
- Switches with dimmers in saloon and at chart table.
- Reading lights at each bed, in the saloon and at the chart table.
- LED courtesy lights at floorboards level.
- LED navigation lights.
- 2 x 60A battery chargers for 24 V system.

- 1 x 25A battery charger for 12 V batteries.

Plumbing / Fresh water

- 830 l (220 US Gal) total capacity approx., with electric gauges.
- Pressurized fresh water inlet.
- 75 l (20 US Gal.) water heater working via engine or via 230V (or 115V) circuit.
- 24V- 36 l/h pressure water pump with expansion tank.
- Automatic electric draining pumps in shower compartments.
- Hot and cold water cockpit shower.
- 2 x 80 l (2 x 21 US Gal.) holding tanks in head compartments.
- Electric deck wash seawater pump.

Draining

- Self-draining cockpit, fenders, gas and anchor lockers.
 - Automatic / control panel start immersed electric bilge pump in sump at lowest point in hull.
- Double action manual bilge pump in cockpit.

Gas circuit

- Ventilated gas locker for 2 butane or propane containers.
- Solenoid safety valve.

Comfort equipment

- Stereo Radio/CD/DVD/MP3 Bose® sound system with USB inlet, bass subwoofer, (loudspeakers in saloon and in cockpit).

Basic Information

Category: Pilothouse Cutter

Model Year: 2013

Year Built: 2013

Country: Spain

Cockpit: Yes

Dimensions

LOA: 58' 1" (17.70m)

Beam: 16' 3" (4.95m)

Max Draft: 7' 11" (2.40m)

Accommodations

Total Cabins: 3

Crew Cabin: 1

Hull and Deck Information

Hull Material: GRP

Engine Information

Engines: 1

Manufacturer: Yanmar

Model: 110

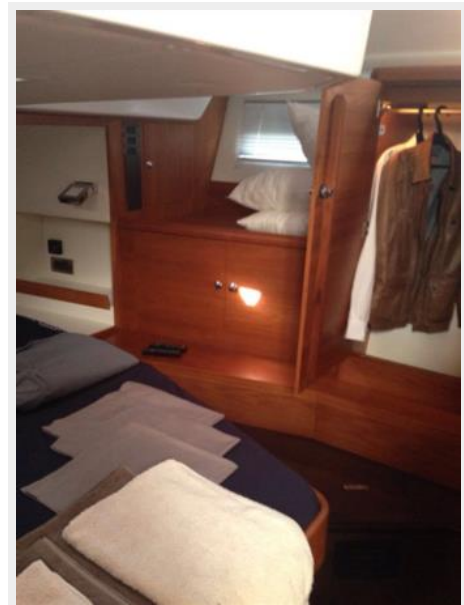
PHOTOS













CONTACTS

Andrey Shestakov, leading yacht broker of the sales department of Shestakov Yacht Sales Inc. Shestakov Yacht Sales Inc., the official representative of the Miami/Fort Lauderdale FL headquarters.

Contact details

Email: andrey@shestakovyachtsales.com

Web: shestakovyachtsales.com/en/

Telephones

USA: +1(954)274-4435

Office hours

Monday – Saturday: **9:00 - 21:00** EDT

Sunday: **closed**

Address



Harbour Towne Marina, 850 NE 3rd St,
STE 213, Dania, FL 33004