

TRADE WIND — ALDEN / CUSTOM



Builder: ALDEN / CUSTOM

LOA: 62' (18.9m)

Year Built: 1938

Model: Motor Yacht

Price: PRICE ON APPLICATION

Location: United States

Our experienced yacht broker, Andrey Shestakov, will help you choose and buy a yacht that best suits your needs **Trade Wind — ALDEN / CUSTOM** from our catalogue. Presently, at Shestakov Yacht Sales Inc., we have a wide variety of yachts available on our sale's list. We also work in close contact with all the big yacht manufacturers from all over the world.

If you would like to buy a yacht **Trade Wind — ALDEN / CUSTOM** or would like help answering any questions concerning purchasing, selling or chartering a yacht, please call **+1(954)274-4435**

TABLE OF CONTENTS

TABLE OF CONTENTS	2
SPECIFICATIONS	3
Overview	3
Basic Information	4
Dimensions	4
Accommodations	4
Hull and Deck Information	4
Engine Information	4
PHOTOS	5
CONTACTS	7
Contact details	7
Telephones	7
Office hours	7
Address	7

SPECIFICATIONS

Overview

(LOCATION: United States) Trade Winds was designed and built to be the ultimate in elegance. She has been restored to her classic good looks and style but with concessions to modern convenience. Motor sailers are intended to be the best of both worlds. Sail power for peaceful cruising and powerful diesel engines to get you where you want to be when you need to be there.

This custom motor sailer was designed by John Alden to meet the exacting and demanding specifications of a discerning owner. Almost eighty years later she fulfills the demands of classic elegance. A three year restoration ensures the quality of service.

On deck we have master woodwork accentuated by bronze hardware. The large pilothouse shares the deck with three skylights, a tender trunk, and two tenders suspended from bronze davits. Ketch rigged, Alden optimized performance and handling in 2008 so that she blends traditional and modern sailing technology.

The pilothouse has ten large windows for the ultimate views and natural light. The helm is forward with original 40" wheel, vintage gauges, and dual controls. A modern instrument panel brings her into the 21st century. An L-shape settee, drop leaf table, and bench seating provide a seating and dining area with a view. Doors to either side provide deck access. The companionway forward leads below to main salon, galley, and guest quarters while an aft companionway leads directly to the master aft cabin.

The lower deck features a master aft cabin with queen berth, under berth storage, drawer storage, hanging locker, dresser, two sofa chairs, stove, and private bath with tub.

The main salon has a sofa in a alcove, sofa chair, writing desk, book cases with lead glass doors, hanging locker, instrument locker, vintage fan, wood burning stove, and skylight. The galley has L-shaped Corian counter with white earthenware sink, classic pump and faucet, Isotherm refrigerator / freezers, compact microwave oven, and a red enameled country stove with oven. Two guest cabins with a dividing bulkhead provide upper and lower berths, drawer storage, hanging locker, and a shared guest head with shower.

Twin Detroit Diesel engines were installed in 1956 and rebuilt in 2010. A Northern Lights generator provides electrical power and a Spectra Newport 75 water maker ensures fresh water. Anyone with an appreciation for classic style and elegance should consider this amazing motor sailer.

Basic Information

Category: Motor Yacht

Sub Category: Motorsailor

Model Year: 1938

Year Built: 1938

Country: United States

Dimensions

LOA: 62' (18.9mm)

Accommodations

Total Cabins: 3

Total Heads: 2

Hull and Deck Information

Hull Material: Wood

Engine Information

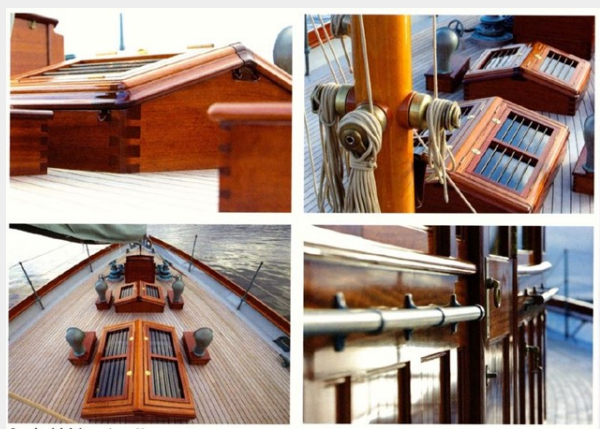
Engines: 2

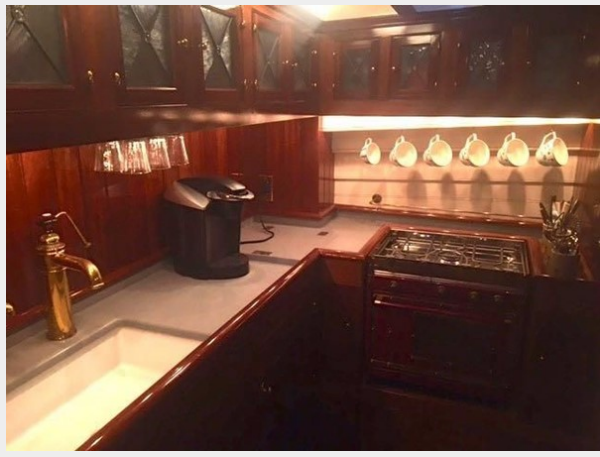
Manufacturer: Detroit Diesel

Engine Type: Inboard

Fuel Type: Diesel

PHOTOS





CONTACTS

Andrey Shestakov, leading yacht broker of the sales department of Shestakov Yacht Sales Inc. Shestakov Yacht Sales Inc., the official representative of the Miami/Fort Lauderdale FL headquarters.

Contact details

Email: andrey@shestakovyachtsales.com

Web: shestakovyachtsales.com/en/

Telephones

USA: +1(954)274-4435

Office hours

Monday – Saturday: **9:00 - 21:00** EDT

Sunday: **closed**

Address



Harbour Towne Marina, 850 NE 3rd St,
STE 213, Dania, FL 33004