

КОРКАРУ — AZIMUT



Судостроитель: [AZIMUT](#)

Год постройки: 2006

Модель: Моторная яхта

Цена: **ЦЕНА ЯХТЫ ПО ЗАПРОСУ**

Местонахождение: United States

Длина общая: 80' 0" (24.38m)

Ширина: 19' 4" (5.89m)

Мин. осадка: 5' 11" (1.80m)

Купить **Коркару — AZIMUT** а также выбрать подходящую вам яхту из нашего каталога яхт вам поможет опытный яхтенный брокер Андрей Шестаков. На сегодняшний день компания **Shestakov Yacht Sales Inc.** имеет большое количество яхт в собственном списке продаж, а также тесно сотрудничает со всеми крупными яхтенными производителями по всему миру.

Для того чтобы купить яхту **Коркару — AZIMUT** а также проконсультироваться по любому вопросу связанному с покупкой, продажей, чартером яхт позвоните по телефону **+7(918)465-66-44**.

ОГЛАВЛЕНИЕ

ОГЛАВЛЕНИЕ	2
ХАРАКТЕРИСТИКИ	4
Обзор	4
Основная информация	4
Размеры	4
Скорость, вместимость и масса	4
Размещение	4
Корпус и палуба	4
Информация о двигателе	5
ПОДРОБНОЕ ОПИСАНИЕ	6
Salon	6
Galley	6
Master Stateroom	6
Master Head	7
VIP Stateroom	7
VIP Head	7
Port Guest Stateroom	8
Port Guest Head	8
Starboard Guest Stateroom	8
2nd Guest Head	8
Crew Lounge/Laundry	9
Crew Head	9
Starboard Crew Stateroom	9
Outside and Deck	9
Flybridge	9
Electronics and Helm Station	10
Pilothouse	10
Foredeck	11

Aft Deck	11
Engine Room	11
Disclaimer	12
Исключения	12
Отказ от ответственности	12
ФОТОГРАФИИ	14
КОНТАКТЫ	25
Контактная информация	25
Телефоны	25
Время работы	25
Адрес	25

ХАРАКТЕРИСТИКИ

Обзор

The second hull built as Azimut's generation two model featuring the "prop relief pockets" reducing the draft to only 5'11". Very low original hours on both main engines and both generators. Delightful interior in "like new" condition and Zero milky wood.

Основная информация

Тип судна: Моторная яхта

Модельный год: 2006

Год постройки: 2006

Страна: United States

Размеры

Длина общая: 80' 0" (24.38m)

Ширина: 19' 4" (5.89m)

Мин. осадка: 5' 11" (1.80m)

Скорость, вместимость и масса

Вместимость воды: 396 Gallons

Вместимость сточного бака: 172 Gallons

Объем топливного бака: 1585 Gallons

Размещение

Всего кают: 4

Корпус и палуба

Материал корпуса: Fiberglass

Информация о двигателе

Двигатели: 2

Производитель: Caterpillar

Модель: C-30

Тип двигателя: Inboard

Тип топлива: Diesel

ПОДРОБНОЕ ОПИСАНИЕ

Salon

- Overhead paneling with recessed lights
- Wood valances, port and starboard
- Drop-shades and drapes, port and starboard
- Drapes, aft
- Curved cherry cabinetry, port, with Fujitsu flat screen TV with remote control lift
- Bose stereo
- Bose speakers, port and starboard
- Burlled wood countertop, port and starboard outboard
- Coffee table, port and starboard
- Dining Salon
- Marble tiled sole Cherry wood overhead trim piece with inlay and recessed lights
- Built-in cabinetry, port, with privacy shutters to galley, three lower cabinets for secured glassware and china storage
- Oval dining table with seating for 8
- Frigomar ice maker
- Electronic ship's safe

Galley

- Built-in twin refrigerators and twin freezers, forward
- Pantry, forward inboard
- Door to port deck
- Two Cherrywood cabinets, port outboard and centerline inboard, w/granite countertops
- Miele 4 burner cooktop
- Miele oven
- Miele microwave oven
- Miele dishwasher
- Two round stainless steel sinks
- Built-in cabinets overhead, port outboard and centerline inboard
- Stairway to crew quarters and engine room, aft
- ISE trash compactor

Master Stateroom

- Full Beam Stateroom
- King size island berth

- **Two swing-arm reading lamps on headboard Mirror on aft bulkhead**
- **Overhead soffit with two recessed lights**
- **Oval portlights, three port and three starboard all with drop-shades, curtains and matching lambrequins**
- **Vanity, starboard, with mirror, stool, six drawers and two cabinets**
- **Closet with full length mirror**
- **An abundance of drawer storage**
- **Sharp TV, Bose Lifestyle AM/FM & CD player**

Master Head

- **Marble sole**
- **Fiberglass overhead with recessed lights**
- **Fiberglass soffit over countertop with three recessed lights**
- **Vanity, outboard, with marble countertop and two sinks**
- **Two mirrored medicine cabinets**
- **Porthole with shades**
- **Tecma head**
- **Walk-in shower with overhead light**
- **Tecma bidet**

VIP Stateroom

- **Cherry wood overhead soffit with eight recessed lights**
- **Curtains**
- **Island berth**
- **Two drawers below berth**
- **Two swing-arm lamps**
- **Cruisair SMX-II air conditioning control**
- **Sony AM/FM**
- **CD player**
- **Sony flat screen TV**
- **Walk-in closet to starboard with overhead recessed lights**

VIP Head

- **Fiberglass overhead with four recessed lights**
- **Built-in curved wood cabinet to port with marble countertop, backsplash, sink with faucet**
- **Wood frame mirror over sink**
- **Tecma head**

- **Circular Lexan door to shower**

Port Guest Stateroom

- **Ultrasuede overhead with recessed lights**
- **Single berths to port and starboard**
- **Pullman berth**
- **Mirrored panels, aft**
- **Two swing-arm lights**
- **Hanging locker to port with light**
- **Cruisair SMX-II air conditioning control**
- **Two stereo speakers**
- **Porthole with shade**
- **Sony AM/FM**
- **CD player**

Port Guest Head

- **Fiberglass overhead with three recessed lights**
- **Built-in cabinet to port and forward with marble countertop**
- **Shower area with circular Lexan door**
- **Tecma head**
- **Portlight with shade**

Starboard Guest Stateroom

- **Twin Berths**
- **Curtains**
- **Porthole**
- **Built-in nightstand between berths**
- **Sony AM/FM**
- **CD player**
- **Two stereo speakers**
- **Mirrored panels on forward bulkhead**
- **Two swing-arm reading lamps**
- **Hanging locker to starboard with light**

2nd Guest Head

- **Entry via companionway and starboard stateroom** • **Fiberglass overhead with recessed lights** •

Built-in vanity with marble countertop and sink • Mirrored panel above sink • Tecma head • Porthole with drop-shade • Shower with Lexan circular door

Crew Lounge/Laundry

• Eight steps down from galley with courtesy step lights • Vinyl sole • Vinyl overhead with recessed lights • Portlights with drapes • “L”-shaped dinette that converts to berth • Built-in cabinet with granite countertop, stainless steel sink • Miele Novotronic T4463C clothes dryer • Miele Novotronic W3365 clothes washer • Cruisair SMX-II air conditioning control • Frigomar refrigerator • Watertight door to engine room • Three 29.8kg CO2 fire system cylinders • Two pre-release cylinders • Sony AM/FM • CD player • Sony TV • High water alarm • Manifold to hot/cold water distribution

Crew Head

• Vinyl sole • Fiberglass overhead with recessed lights • Fiberglass vanity with molded sink • Tecma head • Mirror at vanity • Stall shower

Starboard Crew Stateroom

• Vinyl sole • Vinyl overhead with recessed lights • Cruisair SMX-II air conditioning control • Upper and lower single berth • Portlight with drapes • Hanging locker

Outside and Deck

- **Two 50amp Shore Power inlets**
- **Passerelle**
- **Teak over fiberglass swim platform**
- **Twin garages, one set up for personal watercraft storage, second used as storage.**
- **Hydraulic swim ladder**

Flybridge

- **Teak decks**
- **Curved seating, port**
- **Curved L seating, starboard**
- **Large oval table, starboard**
- **Fiberglass storage cabinet, starboard forward**
- **Bench helm seat, forward on center and features:** .Caterpillar display control panels .Searchlight controls .Trim-tab level indicator and controls .Delta Nav intercom

.American Bow Thruster controls .Raymarine E80

- **Windscreen with stainless steel frame**
- **Grill with fridge below (frigomar)**
- **Stainless steel safety rails**
- **12 person life raft**
- **Opacmare davit**
- **Zodiac RIB**
- **Yamaha 40 hp outboard**
- **Stainless steel grab rail, port and starboard**
- **ZF single lever controls to each engine**
- **Radar Arch with: .GPS antenna .Single horn .Ray marine Open array radar antenna .Sea Tel Sat TV antenna .Horn .Spotlight .GPS antenna .VHF antenna**
- **Wave call 3000 Seatel**

Electronics and Helm Station

- **Sea Tel satellite TV**
- **Sea Tel Wave Call 3000 Sat phone**
- **Searchlight (upper and lower stations)**
- **VHF (upper and lower stations Ray Marine240E)**
- **Ray marine Radar (upper and lower stations)**
- **Ray marine ST2 Autopilot (upper and lower stations)**
- **Ray marine ST2 display head**
- **Ray marine Nav system (upper and lower stations E120)**
- **Ray marine ST2 Rudder angle indicator (upper and lower stations)**
- **Caterpillar display control panels (upper and lower stations)**
- **Stereo (upper and lower stations)**
- **Two stereo speakers**
- **Came security video Explorer display**
- **Intercom Deltaman**
- **American Bow Thruster**
- **White Star Compass**
- **Custom Marble Floor**

Pilothouse

- **Single lever ZF controls**
- **Touchscreen ship's systems control panel**
- **White Star compass**
- **Delta Nav intercom**
- **American Bow Thruster control**
- **Two stainless steel grab rails**

- **Caterpillar digital and analog displays**
- **Ray marine Ray 240E VHF radio**
- **Ray marine ST90 autopilot/display**
- **Ray marine E120 nav/radar system**
- **CAME CCTV camera control**
- **Ray marine STL90 rudder angle indicator**

Foredeck

- **Teak decks**
- **Two stainless steel bow cleats**
- **Flagstaff**
- **Lofrans windlass with remote control**
- **Anchor wash-down**
- **Fire station**
- **Chain locker with center divider**
- **Approximately 90lb anchor**
- **250' of chain**
- **Bow sun lounge**
- **Lights with safety lenses**

Aft Deck

- **Fiberglass overhang with recessed lights**
- **Two stereo speakers**
- **Teak deck**
- **TV (AK Billy)**
- **Wood table on dual stainless steel pedestals with great seating**
- **Locker, port forward**
- **Lofrans warping winch, port and starboard, with foot switch**
- **Three lockers, aft**
- **Fire hose outlet, in center locker**
- **Control panel for aft stairway, port and starboard garages**
- **Stainless steel handrail**
- **Drink box(FrigoMar)Refrigerator, starboard forward**

Engine Room

- **Atlas Frequency Converter for worldwide electric**
- **Fluorescent overhead A/C lights with safety lenses**
- **Kohler 27kw generator, with 1830 hours 4/2016**

- Kohler 19kw generator, with 1461 hours 4/2016
- Racor fuel filters to each generator
- Hydraulics to davit, swim ladder, pod hatches and step door, trim tabs, steering
- Watermaker
- Mass 24/75 automatic battery chargers for engine batteries and ship's batteries
- Main A/C circuit panel
- Two fiberglass muffler to generators with water separators
- Two 24volt freshwater system pumps
- Water heater
- Dripless shaft seals, port and starboard
- 24Volt fuel transfer pumps
- Bilge pump to six compartment manifold
- Hand operated bilge pump
- Generator fuel supply manifold, centerline forward below decks
- Electric/automatic bilge pump
- High water alarm
- High volt fire pump system
- Oil change system
- Mechanical gauges to both engines
- Engine hours 659 Port and 659 STBD - January 2017
- Emergency steering
- Air conditions raw water circulation pump
- A/C and D/C electric distribution panel
- Two CO2 handheld fire extinguishers
- ZF electronic engine control boxes

Disclaimer

The Company offers the details of this vessel in good faith but cannot guarantee or warrant the accuracy of this information nor warrant the condition of the vessel. A buyer should instruct his agents, or his surveyors, to investigate such details as the buyer desires validated. This vessel is offered subject to prior sale, price change, or withdrawal without notice.

Исключения

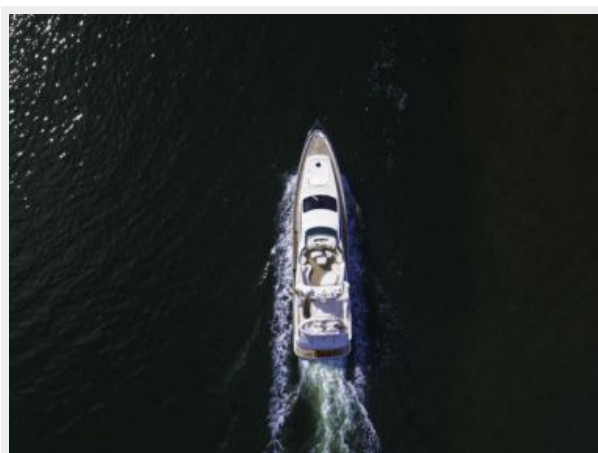
При продаже яхты исключаются личные вещи владельца.

Отказ от ответственности

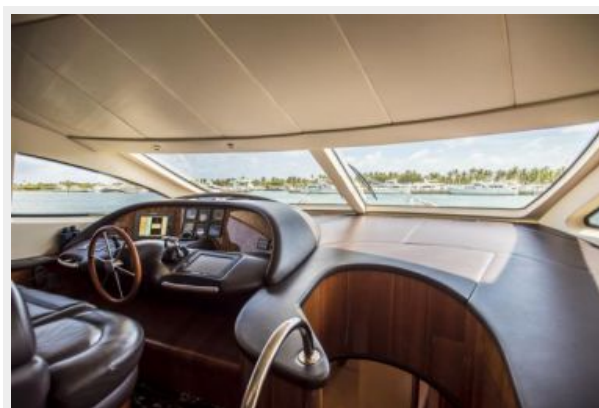
Компания предоставляет описание судна или яхты добросовестно, но не может гарантировать точность этой информации, а также не ручается за техническое состояние. Покупатель должен проинструктировать своих агентов или оценщиков

исследовать представленную информацию более подробно, по собственному желанию. Продажа судна или яхты, изменение цены или снятие с продажи будет происходить без предварительного уведомления.

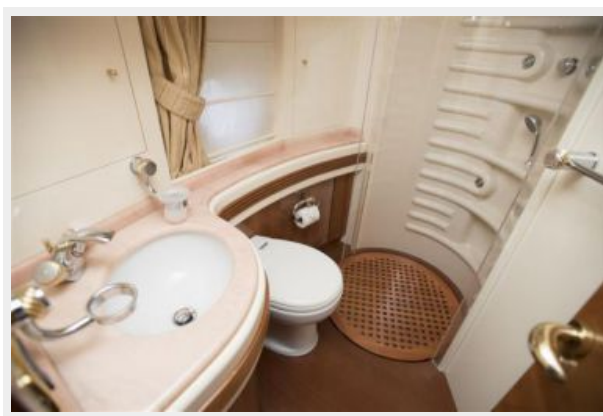
ФОТОГРАФИИ























КОНТАКТЫ

Андрей Шестаков (Andrey Shestakov) – ведущий яхтенный брокер отдела продаж яхт и судов компании Shestakov Yacht Sales Inc. Официальный представитель Shestakov Yacht Sales Inc. для русскоговорящих клиентов в центральном офисе компании в Майами/Форт Лодердейл/Флорида/США.

Контактная информация

Email: andrey@shestakovyachtsales.com

Web: shestakovyachtsales.com

Телефоны

Краснодарский край: **+7(918)465-66-44**

США, Майами, Флорида: **+1(954)274-4435**

Время работы

Понедельник – Суббота: **9:00 - 21:00**
EDT

Воскресенье: **Закрито**

Адрес



Harbour Towne Marina, 850 NE 3rd St,
STE 213, Dania, FL 33004