

## FOREVER YOUNG — HARGRAVE



**Судостроитель:** HARGRAVE

**Год постройки:** 2003

**Модель:** Моторная яхта

**Цена:** **ЦЕНА ЯХТЫ ПО ЗАПРОСУ**

**Местонахождение:** United States

**Длина общая:** 97' 0" (29.57m)

**Ширина:** 20' 0" (6.10m)

**Мин. осадка:** 5' 6" (1.68m)

**Макс. осадка:** 5' 7" (1.70m)

**Крейс. скорость:** 16 Kts. (18 MPH)

**Макс. скорость:** 20 Kts. (23 MPH)

Купить **FOREVER YOUNG — HARGRAVE** а также выбрать подходящую вам яхту из нашего каталога яхт вам поможет опытный яхтенный брокер Андрей Шестаков. На сегодняшний день компания **Shestakov Yacht Sales Inc.** имеет большое количество яхт в собственном списке продаж, а также тесно сотрудничает со всеми крупными яхтенными производителями по всему миру.

Для того чтобы купить яхту **FOREVER YOUNG — HARGRAVE** а также проконсультироваться по любому вопросу связанному с покупкой, продажей, чартером яхт позвоните по телефону **+7(918)465-66-44**.

# ОГЛАВЛЕНИЕ

ОГЛАВЛЕНИЕ	2
ХАРАКТЕРИСТИКИ	3
Обзор	3
Основная информация	3
Размеры	4
Скорость, вместимость и масса	4
Размещение	4
Корпус и палуба	4
Информация о двигателе	5
ПОДРОБНОЕ ОПИСАНИЕ	6
Accommodations & Exterior Details	6
Comments	11
Исключения	11
Отказ от ответственности	11
ФОТОГРАФИИ	12
КОНТАКТЫ	22
Контактная информация	22
Телефоны	22
Время работы	22
Адрес	22

# ХАРАКТЕРИСТИКИ

## Обзор

Forever Young is a perfect example of the exceptional craftsmanship Hargrave Yachts is world-renowned for. She features 4 Guest Staterooms (1 King, 2 Queens, 3 single beds) plus Crew Accommodations for up to 4 aft. Powered by very reliable CAT 3412e engines, "Forever Young" is equipped to take her owners to places they have only dreamed!

A major refit in 2012 with continued upgrades each year including a full service in February 2017. Making this Motor Yacht ready to go for the Summer Season and with her recent Price Reduction "Forever Young" Is By Far The Best Deal On The Market Today!! Don't Miss the opportunity to own one of the finest yachts in her size range.

KEY FEATURES TO CONSIDER:

VERSATILE COCKPIT MOTOR YACHT!!

EXCELLENT WALK AROUND DECKS!!

RECENT SERVICE AND UPGRADES INCLUDING PAINT!!

INTERIOR REFIT!!

PROFESSIONALLY MAINTAINED AND READY FOR SUMMER SEASON!!

MASSIVE FLYBRIDGE SPACE!!

LOWEST PRICE HARGRAVE OF ANY SIZE ON THE MARKET TODAY!

MOTIVATED SELLER - ALL REASONABLE OFFERS WILL BE CONSIDERED!!

## Основная информация

**Тип судна:** Моторная яхта

**Подкатегория:** Кубрик

**Модельный год:** 2003

**Год постройки:** 2003

**Год обновления:** 2012

**Страна:** United States

**Верх:** Hardtop

**Открытая палуба мостика:** Да

**Кубрик:** Да

## Размеры

**Длина общая:** 97' 0" (29.57m)

**Ширина:** 20' 0" (6.10m)

**Мин. осадка:** 5' 6" (1.68m)

**Макс. осадка:** 5' 7" (1.70m)

**Длина привального бруса:** 97' 0"  
(29.57m)

## Скорость, вместимость и масса

**Крейс. скорость:** 16 Kts. (18 MPH)

**Макс. скорость:** 20 Kts. (23 MPH)

**Водоизмещение:** 94000 Pounds

**Вместимость воды:** 600 Gallons

**Вместимость сточного бака:** 100 Gallons **Объем топливного бака:** 2530 Gallons

## Размещение

**Всего кают:** 4

**Всего коек:** 6

**Спальные места:** 9

**Всего ком. состава:** 6

**Каюта капитана:** Да

**Каюты экипажа:** 3

**Койки экипажа:** 5

**Спальных мест экипажа:** 6

**Комм. состав экипажа:** 2

## Корпус и палуба

**Материал корпуса:** Composite Fiberglass **Материал палубы:** Teak

**Комплектация корпуса:** Semi-Displacement

**Цвет корпуса:** White

**Отделка корпуса:** Aluminum

**Дизайнер корпуса:** J.B Hargrave

## Информация о двигателе

---

**Двигатели:** 2

**Производитель:** CAT

**Модель:** 3412E

**Тип двигателя:** Inboard

**Тип топлива:** Diesel

# ПОДРОБНОЕ ОПИСАНИЕ

## Accommodations & Exterior Details

### UPGRADE LIST FOR 2016 & 2017

Deck: Davit completely rebuilt in 2016 All Cap rails have been stripped and varnished 2016 Sun pad cushions have been reupholstered 2016

Interior: All new bedding in all rooms Duvets & covers sheets 2016 Artwork

A/C System: 4 new chillers and control boards 2 new raw water pumps New recirculating pump

Engine Room: 8 new batteries (4 house & 4 main) 4 rebuilt turbos R&R and clean both heat exchangers R&R and clean both after coolers R&R and clean both fuel coolers Replaced both main impellers Replaced all zincs New engine room fans (4) Complete service both engines (oil, filters) New Cummins Onan 29QD Model MDKDS generator (port side)

Watermaker: Control head rebuilt 2016 New pump 2017

Navigation: Added Garmin GPSMAP1040xs 2016 With southern Caribbean maps

Forever Young is a fine example of the exceptional craftsmanship Hargrave Yachts is renowned for. She features 4 Guest Staterooms (1 King, 2 Queens, 3 single beds) plus Crew Accommodations for up to 5 aft. She had a major refit in 2012 and continued upgrades each year including a full service in February 2017 that makes her by far the best deal on the market! Powered by popular CAT 3412e engines, she is sure to take her owners to places they have only dreamed!

This vessel had her annual yard period in February 2017. She is ready for her next owner to go cruising. Furnished with contemporary interior styling using neutral tones and cherry wood. This yacht features 4 staterooms plus crew aft, walk-around decks, large fishing or water sports cockpit, raised pilothouse, open flybridge with large hardtop, a cockpit with new teak decks, underwater lights and an upgraded galley with all new appliances. This large volume, 4 stateroom boat sleeps 9 owners and guests, all with private en-suite heads. Great interior volume, lots of outdoor space with an incredible flybridge. Her profile has timeless classic lines.

### SALON

As you enter the salon from the aft deck through her large glass pneumatic doors with sensor glide, there is an inviting feel with cherry wood, taupe and pewter palette. To the port side is a sectional leather sofa and contemporary recliner. To starboard are two swivel barrel chairs and a pop-up TV. The salon and dining areas are open to each other and separated by a low profile buffet. Cherry wood – satin finish Designer Carpet Hunter Douglas pull down shades Valances Granite top end table with Lamp Artwork (1) contemporary recliner in slate gray (2) barrel chairs with new upholstery Leather sectional sofa with built-in storage Ottoman with storage LED

overhead lights Overhead recessed mirror with contemporary fixture Built-in corner entertainment storage Pop up TV cabinet Mini fridge in salon buffet

## **AUDIO – VISUAL EQUIPMENT**

There is a superb entertainment system throughout boat. Samsung 46' LCD TV in salon Denon integrated network AV receiver AVR-2312ci Samsung Blu-ray disc player Sirius Radio Direct TV in each stateroom (crew, pilothouse and galley are modulated) I-pod docking stations

## **DAY HEAD**

Forward of the dining area to the starboard side is a day head with a walkway to the raised pilothouse and forward of that is the large country galley. Granite counter Decorative SS designer sink Upgraded fixtures New designer wall covering Mirror Marble floor Royal Flush Head Hunter head Wood cabinet base Overhead mirror LED overhead light

## **DINING**

Moving forward from the salon is the formal dining room which becomes an extension of the salon. The forward dining bulkhead has a custom cherry wood buffet with granite top, below is storage for fluted glasses. In the corner to the port side of the dining there is a desk with new leather top and additional storage to the starboard is another long buffet. Over the dining table is a mirror with burl wood frame and a light fixture. There is a pocket door to the starboard side offering privacy to the dining area from the galley. Smoke glass oblong dining table with wood base, seating for 8 Upholstered dining chairs (8) Designer carpet Cherry wood buffet storage with granite top Closet storage with shelves China storage Desk Hunter Douglas shades Refrigerator in cabinet

## **COUNTRY KITCHEN**

The open country galley features all new stainless steel appliances, white cabinets and an Island Granite counter with storage and swivel out bar stools. The dining table has booth seating with new upholstery and storage. Appliances & Features GE Profile side-by-side SS refrigerator with temperature control, ice maker & water in door GE Profile stove and oven with convection GE Profile microwave Bosch Silence Plus 48DBA dishwasher Insinkerator food waste disposal extremely quiet Trash compactor Wine cooler 26" Samsung TV in galley Storage forward, cherry wood, (3) swing out counter stools, overhead LED lights Teak vinyl floor White cabinets Cherry wood walls Pantry with etched glass door Windows with valance and shades Granite countertop Granite galley dining table with SS base Storage forward of galley seating Kohler sink with fixture Soap dispenser

## **FULL BEAM MASTER STATEROOM**

W/ His and Her Heads - Double Door Entry - His and Her walk-in closet In the foyer are two storage closets and a stored stack GE Spacemaker washer and dryer (duplicated set in crew area), recessed overhead mirror with wood design frame, a shelf with storage beneath. The master state features: Below and mid-ship accessed down the stairs off the dining is the master

stateroom as well as two guests staterooms. The stairs are carpeted with LED step lights and overhead, a wood hand rail and designer wall covering, which leads you to the beautiful marble foyer. Double door entry His and Her closets King berth with storage drawers beneath and rope lighting GE Spacemaker stack washer & dryer (in foyer) Bose surround sound speakers with I-phone docking 32" LG TV Safe Bed cover, decorative throw pillows Upholstered headboard with overhead reading lights and decorative wood framing (2) sconce lights – over decorative burl wood facing Built-in upholstered sofa Port lights with valance and sliding pull back curtains Built-in drawer storage dresser with burlwood top Designer wallpaper Built in end tables with granite top His and Hers En-suite Heads with Center Shower Etched privacy glass for shower on port and starboard side Granite bench in shower with teak shower grate 2 sinks with granite countertop (1-port & 1-starboard side) 2 Royal Flush Headhunter heads (port & starboard) 2 medicine cabinets, mirrors 2 port lights with sliding designer pleated treatments Marble floor Towel racks

### **AFT VIP QUEEN GUEST STATEROOM**

Queen berth Decorative bed cover and pillows Corner desk with ottoman seat 26" Samsung TV Pleated window treatments on sliding tracks & valance Port lights Designer carpet End tables with marble top Table lamp Dresser with drawers with large mirror Hanging locker Royal Flush Head Hunter head Spacious, private head - Shower with handheld fixture, sink with granite top, vinyl teak floor, towel racks designer faucet

### **GUEST STATEROOM - TWINS with PULLMAN BERTH**

Sleeps 3 (2) Twin beds plus (1) Twin Pullman 22" LG TV Designer Carpet Designer wallpaper and cherry wood walls Center table with marble top and mirror Bed covers, bed pillows Royal Flush Head Hunter head Private Head - Shower with handheld fixture, sink with granite top, vinyl teak floor, towel racks designer faucet

### **FORWARD VIP STATEROOM**

Access to the VIP stateroom is forward of the galley stairs leading down using a wood handrail and carpeted stairs, cherry wood walls. Queen Island berth LED overhead light Bedcover, throw pillows Sliding Shoji screens Designer carpet Backlit built in headboard Phone 26" Samsung TV Closet with safe Marble vanity Private Head - Royal Flush Head Hunter head, Shower with handheld fixture, sink with granite top, vinyl teak floor, towel racks designer faucet

### **LAUNDRY AREA**

GE Spacemaker stack washer & dryer master foyer closet GE Spacemaker stack washer & dryer in crew area

### **RAISED PILOTHOUSE**

The pilothouse stairs are on the starboard side aft of galley. The instrument panel is cherry wood with upholstered window panels. Aft of the helm station is a bench seat with table and a chart



table with storage for ships manuals. Some of the features in this area are: (1) Stidd electric helm seat Navigation & Camera modulated throughout boat Brother fax Designer carpet Electronics console with leather wall (see list of electronics) Overhead LED lights Pull down shades Upholstered bench seat with wood pedestal table Storage cabinets Ships manuals Stairs to flybridge up through Plexi-glass door

## **ELECTRONICS & NAVIGATIONAL EQUIPMENT**

(3) ACR searchlights w/ remote Led spreader lights aft Navigation lights Docking lights (transom) Glendinning wing controls in protective acrylic boxes (2) Samsung Sync Master 912n LCD Monitors 18" Simrad RFC 35R exchange high performance flux gate Simrad AP20 w/ RPU 80 Autopilot 2nd station full function Furuno Radar FR 21115 black box 23kw, 6.5ft antenna Furuno NX300 Navtex computer system Furuno 1943 C Radar/ Plotter Furuno network, GPS antenna Northstar 941XD combo mount at lower helm station (2) B & G HS 2000 depth finder full function display pack Elbex 4 color PTX system Nobeltec Admiral 10 charts Brother color fax machine and printer interfaced to SATCOM Lilly stainless ratchet mount adjustable antenna mounting hardware (4) (4) Lilly basic SS GPS mounts Sat Phone: Seatel 2100R Panasonic 624 KSU phone system VHF radio Standard spectrum at upper and lower helm stations, digital 8 ft. VHF antenna

## **ENGINE ROOM & MECHANICAL EQUIPMENT**

This is a large volume engine room with easy access to all equipment. Access is from the cockpit through a watertight door. (2) Caterpillar 3412, 1400 hp w/4,670 hrs as of 06/2018 (1) Onan Generator 29kw in sound shield - 100 hrs (1) Onan Generators 35kw in sound shield - 6,000 hrs approx. Makita air compressor Raw water A/C pump 24V LED engine room lights Formica bulkhead covering Dolphin charger Engine room batteries Dripless shaft seals Engine alarm Engine shut off valve Hydraulic steering Reverse GP706 oil change pump system, engines (2) fuel transfer pumps (2) Glendinning 100 amp cable master w/ 100ft cord Jabsco emergency crash clutch pump Delta T engine room filters and fans Royal Flush Head Hunter heads Headhunter waste treatment system: Tidal wave type II MSD Holding tank Air horn Cruise Air chilled Air-conditioning system 4 chillers NAIAD Hydraulic bow thruster (4 stations) Freshwater cooling system NAIAD Stabilizers Multisea 2000 model 302 stabilizers w/ 9.0 s.f. fins w/ controller 30x44 fins Engine synchronizer ZF transmissions Water maker Sea Recovery Aqua Whisper SRC1500-2awm Emergency engine stop Fuel filters (6) automatic & manual bilge pumps Double insulation in engine room (2) Torrid Marine hot water heaters (2) Maxwell anchors w/ 300' chain (2) Maxwell VWC 3000 electric windlasses Quick Lift 2000lb electric davit with rotation Rolla 5 bladed propellers 39x40

## **ELECTRICAL SYSTEM**

110V/220V AC electrical system 12v/24v DC electrical system 35 kw Onan generator 27kw Onan generator (2) 100 amp aft shore power receptacles on automatic reels Trace inverter charger

Safety, Fire, & Emergency Equipment SWITLIK (2) 6-man life rafts on hardtop –hydrostic release

EPIRB FM-200 Sea-Fire fire extinguishing system

## HULL & DECK EQUIPMENT

(6) underwater lights aft Portable Passarelle Boarding stairs LED lights on name boards Bosun's locker to port size (full size walk-in) LED overhead and walkway lights Boarding locations: from port and starboard side door, port and starboard aft deck doors, Fenders & Lines Fresh & saltwater wash down system Swim ladder Fenders and lines Quicklift Davit 2000lb with rotation on flybridge Removable chocks on Flybridge Marquipt boarding stairs w/ teak handrails

## PROTECTIVE COVERS

Caprail covers Interior runners Flybridge cushion covers Flybridge helm seat cover Bow seating covers Aft deck cushion covers Sunpad cover for sunning pad

## AFT DECK

The aft deck has comfortable built-in seating with upholstered cushions. The teak decks were redone in 2012 as was the teak table top. To the starboard are fiberglass molded teak stairs leading up to flybridge. The aft deck gives you access to the port and starboard side walk-around decks to the bow, the salon, the flybridge, the cockpit, the engine room, the crew area. Other features include: 32" Samsung TV Wood aft deck teak table with SS base in/out hi-low Teak decks Storage lockers Built in seating with storage Refrigerator in built in cabinet Storage cabinet Automatic glass sliding door to salon Fiberglass and teak built-in stairs to flybridge Building in teak stairs port and starboard side leading down to cockpit (4) overhead speakers

## COCKPIT & SWIM PLATFORM

The cockpit and swim platform are done in beautiful teak decks . This is a generous space that lends itself to another gathering area while doing water sports. It can be easily accessed from the port or starboard stairs from the aft deck. Teak caprails with covers Hatch storage Cockpit and swim platform teak decks Hot and cold water shower Watertight engine room door Large teak swim platform Large teak cockpit platform Removable SS deck rails Portable Passarelle inserts

## BOW

The walk-around decks go all the way around the boat so moving around the boat for guest or dock is made easy. There are high bulwarks all the way around the boat, to the portside is a large bosun's locker. Forward to the bow is a built-in seat with upholstered cushions and port and starboard large lockers. A custom sun pad was designed for the bow. Teak decking Bench seating with cushions and covers Raised sunning pad Storage lockers Teak cap rails with covers Ships Bell Anchor windlass

## FLYBRIDGE

Up the stairs from the pilothouse or aft deck is a large flybridge deck with hardtop over the helm and seating area. Forward are three helm seats with a console that houses the electronics and

wing stations. Aft of that are two large built in seating areas to the port and starboard side with cushions, storage and tables. Moving aft again to the port side is an oversized freezer for additional provisioning and to the starboard is a sink, storage and barbecue grill and refrigerator. There are removable chocks and a davit further aft. Plexiglass door down to Pilothouse Teak stairs down to aft deck Helm station with electronics Upgraded Glenndining electronic controls New Fusion stereo w/ docking station compatible with I-phone and I-pod Port and starboard built-in seating with storage and cushions Port and starboard fiberglass tables Non-skid fiberglass floor, stainless steel accents, (3) Pompanette helm seats BBQ grill Oversized freezer refrigerator Icemaker Sink LED overhead lights Toe kick LED multi-color rope lighting Teak lounge chairs with sun shades Teak stairs Removable chocks for jet skis Quicklift Davit 2000lb with rotation

## **CAPTAIN & CREW ACCOMMODATIONS**

Captain and Crew cabins are located aft with access from the cockpit engine room door. Captain has a double bed and private head, shower and sink, and hanging locker. The cabin also has a TV, window treatments and bedcovers. (2) Crew cabins each have one with a twin bunks layout the other with single berth, TV, bedcovers, hanging locker and a shared head, shower and sink. Hardwood flooring in crew areas.

## **Comments**

---

FOREVER YOUNG is a "best buy" for a quality fiberglass yacht in excellent condition. She is ideal for a family or charter, with a spacious 4 stateroom layout. Easy to inspect and open to offers. The photos are a recent representation of her present condition.

## **Исключения**

---

При продаже яхты исключаются личные вещи владельца.

## **Отказ от ответственности**

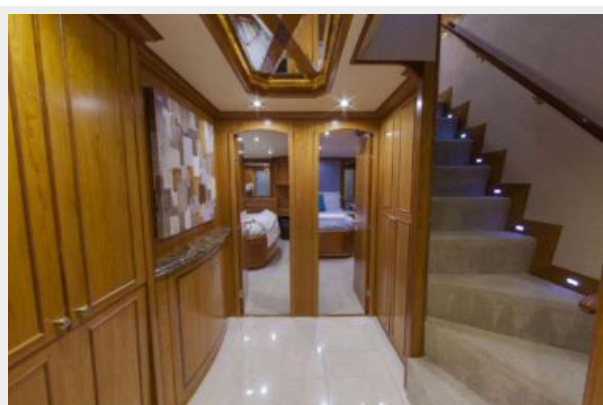
---

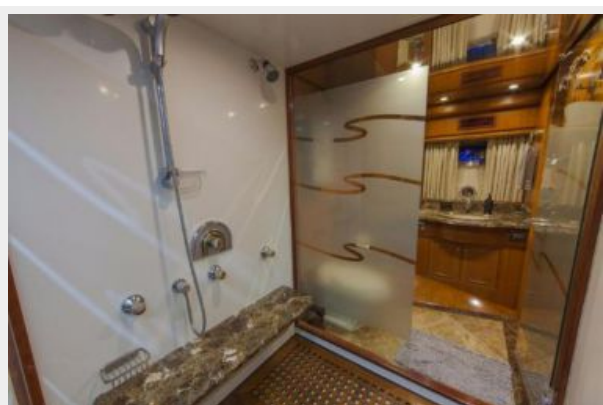
Компания предоставляет описание судна или яхты добросовестно, но не может гарантировать точность этой информации, а также не ручается за техническое состояние. Покупатель должен проинструктировать своих агентов или оценщиков исследовать представленную информацию более подробно, по собственному желанию. Продажа судна или яхты, изменение цены или снятие с продажи будет происходить без предварительного уведомления.

# ФОТОГРАФИИ







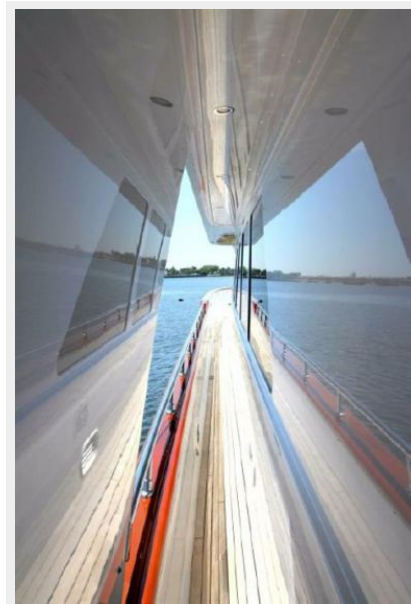




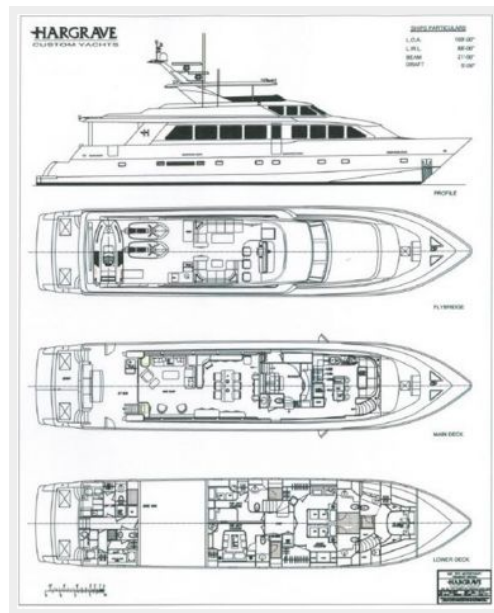












# КОНТАКТЫ

Андрей Шестаков (Andrey Shestakov) – ведущий яхтенный брокер отдела продаж яхт и судов компании Shestakov Yacht Sales Inc. Официальный представитель Shestakov Yacht Sales Inc. для русскоговорящих клиентов в центральном офисе компании в Майами/Форт Лодердейл/Флорида/США.

## Контактная информация

Email: [andrey@shestakovyachtsales.com](mailto:andrey@shestakovyachtsales.com)

Web: [shestakovyachtsales.com](http://shestakovyachtsales.com)

## Телефоны

Краснодарский край: **+7(918)465-66-44**

США, Майами, Флорида: **+1(954)274-4435**

## Время работы

Понедельник – Суббота: **9:00 - 21:00**  
EDT

Воскресенье: **Закрито**

## Адрес



Harbour Towne Marina, 850 NE 3rd St,  
STE 213, Dania, FL 33004