

## VINTRO — AZIMUT



**Судостроитель:** [AZIMUT](#)

**Год постройки:** 2000

**Модель:** Моторная яхта

**Цена:** ЦЕНА ЯХТЫ ПО ЗАПРОСУ

**Местонахождение:** United States

**Длина общая:** 70' 0" (21.34m)

**Ширина:** 18' 3" (5.56m)

**Макс. осадка:** 5' 6" (1.68m)

Купить **VINTRO — AZIMUT** а также выбрать подходящую вам яхту из нашего каталога яхт вам поможет опытный яхтенный брокер Андрей Шестаков. На сегодняшний день компания **Shestakov Yacht Sales Inc.** имеет большое количество яхт в собственном списке продаж, а также тесно сотрудничает со всеми крупными яхтенными производителями по всему миру.

Для того чтобы купить яхту **VINTRO — AZIMUT** а также проконсультироваться по любому вопросу связанному с покупкой, продажей, чартером яхт позвоните по телефону **+7(918)465-66-44**.

# ОГЛАВЛЕНИЕ

ОГЛАВЛЕНИЕ	2
ХАРАКТЕРИСТИКИ	4
Обзор	4
Основная информация	4
Размеры	4
Скорость, вместимость и масса	4
Размещение	5
Корпус и палуба	5
Информация о двигателе	5
ПОДРОБНОЕ ОПИСАНИЕ	6
Overview	6
Accommodations	6
Galley	7
Electronics	7
Electrical Equipment	8
Flybridge	8
Mechanical and Engine Details	8
Disclaimer	8
Исключения	9
Отказ от ответственности	9
ФОТОГРАФИИ	10
Bow	10
Walk Around Side Deck	10
Walk Around Side Deck	10
Flying Bridge Helm	10
Salon	10
Starboard Sofa	10
Galley	11

---

Galley	11
Galley	11
Internal Stairs to Flybridge	11
VIP Stateroom	11
VIP Settee	11
Master Stateroom	12
Master Ststeroom	12
Master Bathroom	12
Aft Deck	12
Aft Deck	12
Flybridge	12
Flybridge	13
Flybridge	13
КОНТАКТЫ	14
Контактная информация	14
Телефоны	14
Время работы	14
Адрес	14

---

# ХАРАКТЕРИСТИКИ

## Обзор

A popular 70 SEA JET. \$50,000 2017. A good value can be had. 2017 March service

- Bow thruster
- Stabilizers
- Stern thruster ( rebuilt motor )
- Bottom Paint
- AC system
- top generator service
- Exhaust Flange seal
- Garage door motor

The owner was in the process of a rebuild and decided to move up . Still some more items to do and will price accordingly.

## Основная информация

**Тип судна:** Моторная яхта

**Модельный год:** 2001

**Год постройки:** 2000

**Страна:** United States

**Верх:** Bimini Top

## Размеры

**Длина общая:** 70' 0" (21.34m)

**Ширина:** 18' 3" (5.56m)

**Макс. осадка:** 5' 6" (1.68m)

## Скорость, вместимость и масса

**Вместимость воды:** 398 Gallons

**Объем топливного бака:** 870 Gallons

## Размещение

---

Всего кают: 4

Спальные места: 9

Каюты экипажа: 1

Койки экипажа: 2

Спальных мест экипажа: 2

Комм. состав экипажа: 1

## Корпус и палуба

---

Материал корпуса: Fiberglass

Материал палубы: Fiberglass

Комплектация корпуса: Semi Vee

## Информация о двигателе

---

Двигатели: 2

Производитель: MTU

Модель: 12V 183

Тип двигателя: Inboard

Тип топлива: Diesel

---

# ПОДРОБНОЕ ОПИСАНИЕ

---

## Overview

---

The yacht that made Azimut famous. The ever popular 70-Sea Jet model is strong, roomy, comfortable with a modern style. There are few yachts in this price range that compare. VINTRO is an opportunity to find a good value and do some updating and personalizing. The yacht does everything well.

Features are:

- 4 staterooms (VIP, Owner and 2 guests) so you your friends and family can enjoy cruising to crystal clear Bahama waters.
- Great Flying Bridge
- MTU diesels
- Walk around side decks- makes line handling easy.
- Nice size aft deck for "al fresco" dining.
- Perfect to cruise the "Great Loop"

Currently receiving \$50,000 in updating. The owner wants to sell at a good value, allowing you to personalize and renew the yacht to your taste and condition. A popular 70 SEA JET. A good value can be had. 2017 March service

- Bow thruster
- Stabilizers
- Stern thruster ( rebuilt motor )
- Bottom Paint
- AC system
- top generator service
- Exhaust Flange seal
- Garage door motor

## Accommodations

---

From the swim platform stairs lead to the roomy covered aft-deck settee and a 6' teak dining table and teak chairs.

The salon is through double stainless steel framed sliding doors. The two large curved settees facing one another make the salon. There is a salon ice maker just inside to port.

Forward to starboard is the galley with full compliment of full size appliances.

To port is an open staircase leading to the bridge. Forward of the stairs on the port is a large dinette with custom dinette table large enough for 6-8 to dine. Starboard there is the lower helm

with many new electronics in the last 2 years.

Forward is the VIP with storage, a settee to starboard and private head with marble vanity and separate stall shower as well as Vacu-flush toilet.

Aft of the VIP there is the port guest head, vanity and stall shower and aft of that is the port guest stateroom with upper and lower berths. Across the companionway is the starboard guest that sleeps 2 with ensuite head and shower with another Vacu-flush and corner vanity.

The master is accessed from the main salon aft and has king size berth on center with vanity to port and double settee to starboard. There is a 20" Sony TV and VCR player. The master head has a huge marble vanity with double sinks, Vacu-flush head and stall shower. This area also acts as a 5 foot sound barrier from the engine room. The crew quarters are forward, accessed from the foredeck thru a large hatch. There are 2 bunks, head and stall shower.

---

## Galley

---

There is an outside door that leads directly to the galley for easier provisioning. The counters are marble, as is the deck. There is under counter storage for pots and pans to the right of the sinks. Forward is a 4 GE 4-burner cooktop with separate full size GE microwave/convention oven. Left of the range and cooktop is a 7' Euro style refrigerator.

- Double stainless steel sinks
- 4-burner GE Cooktop
- Stainless steel GE Microwave/convention oven
- Refrigerator and freezer
- Custom larger dinette table
- Galley door direct to outside deck

---

## Electronics

---

- Lower Helm
- Naiad Stabilizer controls
- Simrad tri-data (3 x units)
- Video Camera Monitor
- Floscan fuel system
- (2) Northstar GPS/Chartplotter
- (2) Standard Horizon VHF radios
- (2) Simrad autopilots
- (2) Simrad Radar RA 42-C
- Stern and Bow thruster controls on both helms
- BOSE system with amplifier
- BOSE speakers with Sub-woofer

- Plasmavision W TV with Sylvania VCR/DVD in salon
- Toshiba TV/DVD in master cabin
- (3) Symphonic TV/VCR on VIP in guest cabins
- Direct TV is inactive at this time

---

## Electrical Equipment

---

There are 2 Kohler 21KW generators in the engine room that produce 240V/60khz power.

- 4 battery chargers 2-3000 Watt
- 2-Prosine Inverters
- Trace 4000/24 Inverter for house
- Cable recoiler for the 2 50 amp/240v shore power cords

---

## Flybridge

---

The flying bridge is accessed from inside by an open stairway leading up to port from forward of the salon. There is a double seat helm to starboard with full compliment of electronics (see above). Aft of the bridge helm is a large, king-size, sun pad (could be an extra berth). Across from the lounge is a curved table and curved settee for six. Forward of this settee to port is the cabinet for BBQ. There is a new 8-man life raft, expiration July 2012 on the bridge. There is a tender that is carried on the bridge, aft and lifted by a 1000# Davit.

- Electric/hydraulic davit on bridge (not operating)

---

## Mechanical and Engine Details

---

- Twin MTU 12V183 Turbo diesels 1150hp
- 2 x Kohler 21 kW generators
- Naiad Stabilizers
- Vetus Bow and Stern Thruster
- Reverse Cycle Air/Heat throughout
- Custom Exhaust controller for less smoke
- Waring winches (2000#)
- Windlass (3500#) with all chain

In 2015 an air conditioner hose leaked filling the aft bidge. Water was just around the floor boards. All wires, bonding, pumps etc. were replaced. Not for Sale to US Residents While in US Waters.

---

## Disclaimer

---



The Company offers the details of this vessel in good faith but cannot guarantee or warrant the accuracy of this information nor warrant the condition of the vessel. A buyer should instruct his agents, or his surveyors, to investigate such details as the buyer desires validated. This vessel is offered subject to prior sale, price change, or withdrawal without notice. Vessel has a Florida title! There is evidence of some flooding in lazarette - Forward bilges appear clean .

## **Исключения**

---

При продаже яхты исключаются личные вещи владельца.

## **Отказ от ответственности**

---

Компания предоставляет описание судна или яхты добросовестно, но не может гарантировать точность этой информации, а также не ручается за техническое состояние. Покупатель должен проинструктировать своих агентов или оценщиков исследовать представленную информацию более подробно, по собственному желанию. Продажа судна или яхты, изменение цены или снятие с продажи будет происходить без предварительного уведомления.

# ФОТОГРАФИИ

## Bow



## Walk Around Side Deck



## Walk Around Side Deck



## Flying Bridge Helm



## Salon



## Starboard Sofa



**Galley**



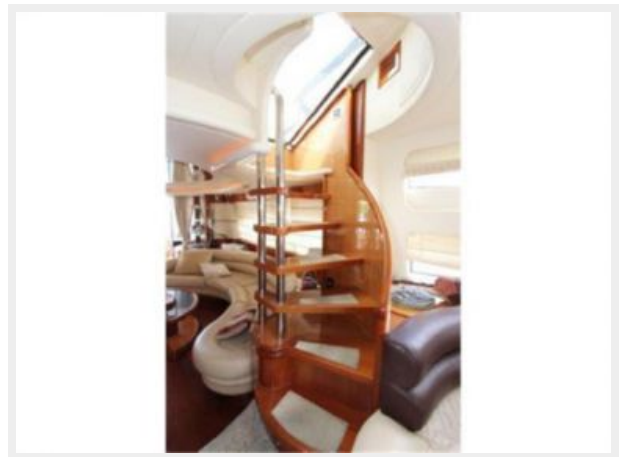
**Galley**



**Galley**



**Internal Stairs to Flybridge**



**VIP Stateroom**



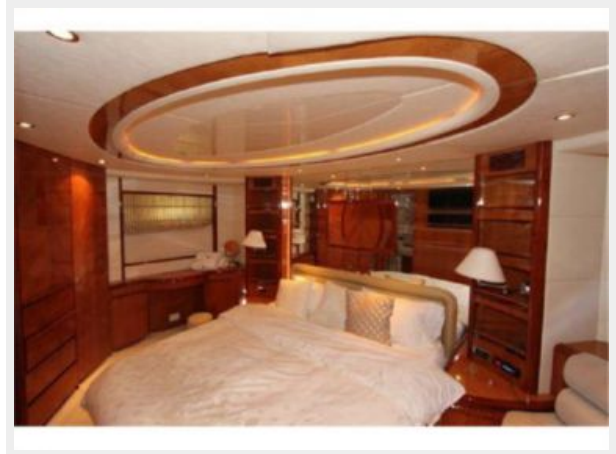
**VIP Settee**



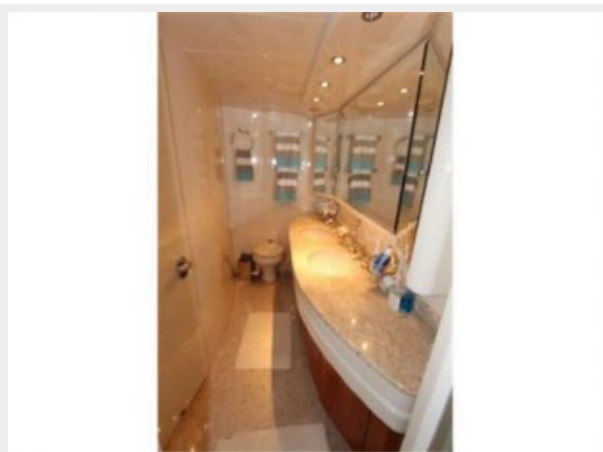
**Master Stateroom**



**Master Ststeroom**



**Master Bathroom**



**Aft Deck**



**Aft Deck**



**Flybridge**



**Flybridge**



**Flybridge**



# КОНТАКТЫ

---

Андрей Шестаков (Andrey Shestakov) – ведущий яхтенный брокер отдела продаж яхт и судов компании Shestakov Yacht Sales Inc. Официальный представитель Shestakov Yacht Sales Inc. для русскоговорящих клиентов в центральном офисе компании в Майами/Форт Лодердейл/Флорида/США.

## Контактная информация

---

Email: [andrey@shestakovyachtsales.com](mailto:andrey@shestakovyachtsales.com)

Web: [shestakovyachtsales.com](http://shestakovyachtsales.com)

## Телефоны

---

Краснодарский край: **+7(918)465-66-44**

США, Майами, Флорида: **+1(954)274-4435**

## Время работы

---

Понедельник – Суббота: **9:00 - 21:00**  
EDT

Воскресенье: **Закрито**

## Адрес

---



Harbour Towne Marina, 850 NE 3rd St,  
STE 213, Dania, FL 33004