

## QUINTESSENCE — HORIZON



**Builder:** HORIZON

**Year Built:** 2014

**Model:** Catamaran

**Price:** PRICE ON APPLICATION

**Location:** United States

**LOA:** 52' 0" (15.85m)

**Beam:** 22' 0" (6.71m)

**Min Draft:** 4' 6" (1.37m)

**Max Draft:** 4' 8" (1.42m)

**Cruise Speed:** 18 Kts. (21 MPH)

**Max Speed:** 22 Kts. (25 MPH)

Our experienced yacht broker, Andrey Shestakov, will help you choose and buy a yacht that best suits your needs **QUINTESSENCE — HORIZON** from our catalogue. Presently, at Shestakov Yacht Sales Inc., we have a wide variety of yachts available on our sale's list. We also work in close contact with all the big yacht manufacturers from all over the world.

If you would like to buy a yacht **QUINTESSENCE — HORIZON** or would like help answering any questions concerning purchasing, selling or chartering a yacht, please call **+1(954)274-4435**

# TABLE OF CONTENTS

TABLE OF CONTENTS	2
SPECIFICATIONS	4
Overview	4
Basic Information	10
Dimensions	10
Speed, Capacities and Weight	11
Accommodations	11
Hull and Deck Information	11
Engine Information	11
DETAILED INFORMATION	12
Description	12
Exclusions	18
Disclaimer	18
PHOTOS	19
STABLE PLATFORM	19
WIDE STERN	19
SIDE DECKS	19
BOW CUSHIONS	19
FOREDECK	19
AFT DECK TABLE	19
FLYBRIDGE	20
SEATING	20
HELM WITH LOUNGER	20
HELM	20
FLYBIDGE DECK	20
SALON 1	20
SALON 2	20
SALON 3	20

SALON 4	21
MASTER STATEROOM	21
MASTER BATH 2	21
MASTER BATH 1	21
MASTER PASSAGE	21
VIP STATEROOM	21
VIP BATHROOM	22
TWIN CABIN	22
STACKED WASHER/DRYER	22
AV RACK	22
LAYOUT	23
CONTACTS	24
Contact details	24
Telephones	24
Office hours	24
Address	24

---

# SPECIFICATIONS

---

## Overview

---

### A. Hull and Main Structure:

1. White Gelcoat finish for hull above water line, exterior deck, furniture and superstructure.
2. One-piece hull lamination and longitudinal girders
3. Hull is built with licensed process SCRIMP™ for improved strength and less weight
4. High density foam cored construction bottom and topsides
5. Solid fiberglass laminate stem, keel.
6. Main Engine girders with high density foam coring
7. Deck & superstructure foam cored reinforcement for rigidity
8. International anti-fouling bottom paint, w/ anti-osmosis treatment

### B. Exterior Deck and Equipment:

1. Nonskid main deck and Flybridge roof.
2. Teak covered aft deck, Steps to flybridge & Steps to transom.
3. Fiberglass cap rail.
4. S/S rub rail around hull deck joint.
5. Heavy-duty S/S #316 1-1/4" handrail w/1" (stanchions)
6. 10 Mooring cleats on deck.
7. Flag staff on back of flybridge.
8. Fuel and water inlets.
9. Locker for 24V anchor windlass.
10. 50KG Delta anchor.
11. 150ft of high tensile 3/8" chain and 150ft warp.
12. Roller for anchor. Anchor Bridle

### Doors, Hatches, Windows & Port Holes

13. SS sliding salon door.
14. Two bow storage lockers with access through flush FRP deck hatches.
15. 2 x Deck hatches with blinds & screens.
16. Engine access through manual deck hatches in cockpit floor with manual struts.
17. Two large hull side frameless window.
18. Six oval portholes.

### Aft Deck Area

19. FRP Curved seat with cushions at aft. deck.
20. Teak cockpit table.
21. Comfortable stairs from aft deck to flybridge.
22. Two steps down to dive/swim platform.

23. Cockpit lockers for storage.
24. 2 side boarding doors
25. Second location bases for aft. deck table
26. S/S transom door with Horizon Logo
27. Dimmer switch for Aft. deck ceiling lighting

### **Swimming Platform Area**

28. Built-in shower with hot/cold water.
29. Swim ladder on STBD side.
30. S/S safety rail on swim platform

### **Light**

31. LED courtesy lights.
32. LED bulwark w/ flush mounted deck lights
33. LED ceiling lights
34. LED white light with 24VDC transformer on Horizon group logo in P&S.
35. Wiring for boat name on transom.
36. AQUA SIGNAL navigation lights.
37. Cockpit down lights.
38. 2 X Aft Docking Flood lights
39. 4 x Aqualuma Underwater Lights

### **C. Flybridge:**

1. Non-skid flybridge cambered deck with ample drainage.
2. Flybridge Infinity Carpet
3. Helm station with stainless wheel and instrument console.
4. Single STIDD helm chair
5. FRP Arch & FRP Hardtop.
6. Wet bar package:
  - o FRP module bar with sink, with hot and cold water.
  - o 2 x DC fridge in bar.
7. Corian Counter top table with seating.
8. Sunning bed/ Bench Seat stb side of helm console with cushions
9. Ample locker space for storage.
10. wdl 800 Steelhead Crane
11. Covers for F/B Seating and console
12. Covers for aft deck seating, aft deck table and flybridge Table

### **E. Engine Room and Equipments:**

1. Sound and heat insulated compartments
2. Delta –T Moisture eliminators for engine rooms.
3. DC 24Volt lights.

4. One AC outlet per engine room.

## **F. Electrical system:**

### **General**

1. Color-coded wiring for easy identification.
2. Premium DC distribution board with switches, voltmeter and amp meter.
3. Outlets in Salon / bar / galley / cabins / fly-bridge / aft deck / engine room.
4. Vimar switches for lights and electrical outlets.

### **AC/DC Main Power System**

5. AC power supply from generator / shore power.
6. Cummins Onan 17.5kw Generator (1471 hours)
7. Selector switch for AC power supply.
8. Remote panel for generator.
9. Four AGM Batteries for engine & generator start up.
10. Two AGM Batteries for ship's service power.
11. BEP battery switch.
12. One battery charger for all batteries.
13. One inverter 3.0 KW.
14. Premium AC panel with switches

## **G. Mechanical system:**

### **Fuel and Lube Oil System**

1. Racor 900FG filters for both engines.
2. One oil change pump for engines, generator and Gearboxes.

### **Fresh Water System**

3. 300 Gal of water tanks integral to hull.
4. Color coded piping for easy identification.
5. Marine grade lines for fresh water system
6. One 17 Gal/110V or 220V water heater.
7. 2 x High volume 24V Headhunter Xclaiger fresh water pump with accumulator tank.
8. Fresh water washdown for anchor.
9. Fresh Water Washdown on Aft Deck.

### **10. Sanitary System**

11. 2 x 30 Gal of holding tank integral to hull
12. Electric fresh water flush toilets, pumps with Y valve for automatic discharge. and dock side pump out (2).

### **Bilge Water System**

13. 4x electric 24V bilge pumps.
14. High level bilge water alarm.

### **Fire Safety System**

15. One Seafire automatic/manual fire extinguisher in each engine room.

### **Air Conditioning System**

16. Marine Air –central air conditioning for each cabins and salon.
17. Flybridge Airconditioning
18. Air Cond. Self cleaning system
19. Hyd. Trim tab system

## **H. Interior Design and Equipment:**

### **Interior Finish**

1. Walnut HardWood flooring.
2. Tempered safety glass windows.
3. Soft furnishings including Hunter Douglass Electric blinds and accent wood finishing.

### **Heads and Showers General**

4. Wood floor.
5. Corian countertops.
6. Fabric blind over large window.
7. Portlights for ventilation.
8. Basin, cabinets and mirrors.
9. Walk-in separate shower.
10. Linen Cupboard inboard of the M/S shower.
11. Separate toilet.
12. Lights in Overhead.
13. Extractor fan.

### **Saloon**

14. Salon seating covered in fabric.
15. Coffee table
16. Cabinet for Crystal Glasses.
17. Electric Pop up TV.
18. Hunter Douglas Automated Pirouette Blinds connected to Elan Home Automation System
19. Two hatches with screen on top of salon roof

### **Galley/ Dinette**

20. Wood floor.
21. Corian counter tops.
22. Large Single sink with Disposal and Pull out Faucet.
23. Sub Zero 700TCI fridge with dual Freezer drawers and built in ice maker
24. GE Avantium Oven/Convection Microwave
25. GE 30" 4 burner Cooktop
26. Custom accent wood carpentry.
27. Custom wooden carpentry for galley, cupboards and counters.
28. Cutlery & crockery drawers.
29. Pot drawer & spice drawers.
30. Additional storage drawers and cupboards.
31. Under counter trash drawer.
32. Fischer Paykel Dishwasher

### **VIP stateroom:**

33. Queen bed, semi walk around.
34. Custom wood accent carpentry.
35. Carpeted floor
36. Deck hatch with screen & opening.
37. Hunter Douglas Pirouette blind over large window.
38. Soft furnishings.
39. Night stands with light switches and outlets.

### **Port Aft guest stateroom:**

40. Custom wood accent carpentry.
41. Carpeted floor.
42. Opening port lights in hull side.
43. Hunter Douglas Pirouette Blinds
44. Soft furnishings.
45. Twin beds with insert to Queen
46. Storage beneath bed.
47. Cabin lights.
48. Shared bathroom with VIP cabin.

### **Master Stateroom**

49. Custom carpentry for accent finishing.
50. Carpeted floor.
51. Deck hatch with screen & opening.
52. Hunter Douglas Pirouette blinds over large window
53. Queen size bed, semi walk around.
54. Large full height Hanging closets.
55. Closets for linens / towels and clothes.



56. Cabin lights.
57. Night stands with light switches and outlets.

### 1. Navigation & Instrumentation: & Audio Video Equipment:

1. 2 x Furuno 15" T2 touch screen chart plotter with GPS antenna on Flybridge.
2. Furuno Auto pilot on Flybridge and Salon.
3. Furuno 4kw 3.5ft open array radar.
4. 2 x Furuno DST800 Depth transducers.
5. Icom IC-M504 VHF on flybridge.
6. ACR RCI 100D Spotlight on Flybridge
7. FLIR Thermal/Night Vision Camera
8. 8ft Digital Antenna for VHF/AIS
9. Furuno Class B AIS Transponder
10. Furuno FDF Fishfinder
11. Garmin GC10 Marine Engine room Cameras x 2
12. 3 x Axis all weather Security Cameras connected to Elan System
13. Sirius XM Module and Antenna
14. JL Audio Sub woofer & 4 x 7" JL Audio Speakers on Flybridge
15. 2 x JL Audio Sub Woofers and 4 x JL Audio 7" speakers on Aft Deck
16. Crestron Media Distribution Center (DM-MD6x4)
17. Elan HC12 Sysetm Controller
18. Power Distribution Wattbox
19. Elan AM/FM Tuner (DT11)
20. Integra DTS-HD THX 5.1 surround sound processor (DTR-40.5)
21. Elan Integrated Multiroom Audio Controller (S1616A)
22. Crestron 3 - Series Advanced Control Processor
23. Cisco Linksys router in Salon
24. 160 GB Apple TV with apple stream
25. X-Box x 2 which receive Bluray
26. Sirius XM radio
27. 40" Samsung LED TV in Salon
28. 32" Samsung LED TV in Master
29. 32" Samsung LED TV in VIP
30. 32" Samsung TV on Aft Deck
31. KVH HD7 Satellite TV with Dummy Dome
32. 160 GB Apple TV in Salon
33. Apple TV in Master Stateroom
34. Sat TV displays on Flybridge Furuno
35. Wave WiFi Internet
36. Cradlepoint Cellular Internet
37. APC Alternate Power Supply

### 1. 1. Additional Equipment:

1. Full Bow Deck Cushions
2. Flybridge Clear Enclosure
3. 1800 Gal/day Water-maker Sea recovery (114 Hours)
4. Fresh water UV Sterilization system
5. Infinity Flybridge Carpet
6. Fitted Pull up carpet in Salon and Galley
7. V-Kool on all windows
8. Spur Line Cutters
9. Burnewiin Rod Holder system
10. Full Seacrylic enclosure on Flybridge
11. 27" LYNX Pro Stainless BBQ with 48,000BTU and rotisserie
12. Dual X-Caliber Water pumps
13. ELAN Home Entertainment System
14. Alternate Power Supply
15. List of Extensive Spares
16. Wheelhouse Yacht Management System

## Basic Information

<b>Category:</b> Catamaran	<b>Sub Category:</b> Cruiser
<b>Model Year:</b> 2014	<b>Year Built:</b> 2014
<b>Country:</b> United States	<b>Coast Guard #:</b> 1255142
<b>Vessel Top:</b> Hardtop	<b>Fly Bridge:</b> Yes

## Dimensions

<b>LOA:</b> 52' 0" (15.85m)	<b>LWL:</b> 48' 0" (14.63m)
<b>LOD:</b> 52' 0" (15.85m)	<b>Beam:</b> 22' 0" (6.71m)
<b>Min Draft:</b> 4' 6" (1.37m)	<b>Max Draft:</b> 4' 8" (1.42m)
<b>Clearance:</b> 25' 0" (7.62m)	<b>MFG Length:</b> 52' 0" (15.85m)

---

## Speed, Capacities and Weight

---

**Cruise Speed:** 18 Kts. (21 MPH)

**Cruise Speed RPM:** 2950 Kts.

**Cruise Speed Range:** 300

**Max Speed:** 22 Kts. (25 MPH)

**Max Speed RPM:** 3350 Kts.

**Max Speed Range:** 200 Kts.

**Displacement:** 60000 Pounds

**Gross Tonnage:** 32 Pounds

**Water Capacity:** 300 Gallons

**Holding Tank:** 60 Gallons

**Fuel Capacity:** 800 Gallons

**Fuel Consumption:** 32 Gallons

---

## Accommodations

---

**Total Cabins:** 3

**Total Berths:** 3

**Sleeps:** 6

**Total Heads:** 2

---

## Hull and Deck Information

---

**Hull Material:** Composite Fiberglass

**Deck Material:** Composite Fiberglass

**Hull Configuration:** Catamaran

**Hull Color:** WHITE

**Hull Finish:** Fiberglass

**Hull Designer:** Angelo Lavranos

**Exterior Designer:** J C Espinosa

---

## Engine Information

---

**Engines:** 2

**Manufacturer:** Cummins

**Model:** QSB6.7

**Engine Type:** Inboard

**Fuel Type:** Diesel

---

# DETAILED INFORMATION

---

## Description

---

### A. Hull and Main Structure:

1. White Gelcoat finish for hull above water line, exterior deck, furniture and superstructure.
2. One-piece hull lamination and longitudinal girders
3. Hull is built with licensed process SCRIMP™ for improved strength and less weight
4. High density foam cored construction bottom and topsides
5. Solid fiberglass laminate stem, keel.
6. Main Engine girders with high density foam coring
7. Deck & superstructure foam cored reinforcement for rigidity
8. International anti-fouling bottom paint, w/ anti-osmosis treatment

### B. Exterior Deck and Equipment:

1. Nonskid main deck and Flybridge roof.
2. Teak covered aft deck, Steps to flybridge & Steps to transom.
3. Fiberglass cap rail.
4. S/S rub rail around hull deck joint.
5. Heavy-duty S/S #316 1-1/4" handrail w/1" (stanchions)
6. 10 Mooring cleats on deck.
7. Flag staff on back of flybridge.
8. Fuel and water inlets.
9. Locker for 24V anchor windlass.
10. 50KG Delta anchor.
11. 150ft of high tensile 3/8" chain and 150ft warp.
12. Roller for anchor. Anchor Bridle

### Doors, Hatches, Windows & Port Holes

13. SS sliding salon door.
14. Two bow storage lockers with access through flush FRP deck hatches.
15. 2 x Deck hatches with blinds & screens.
16. Engine access through manual deck hatches in cockpit floor with manual struts.
17. Two large hull side frameless window.
18. Six oval portholes.

### Aft Deck Area

19. FRP Curved seat with cushions at aft. deck.
20. Teak cockpit table.
21. Comfortable stairs from aft deck to flybridge.
22. Two steps down to dive/swim platform.

23. Cockpit lockers for storage.
24. 2 side boarding doors
25. Second location bases for aft. deck table
26. S/S transom door with Horizon Logo
27. Dimmer switch for Aft. deck ceiling lighting
28. Hoshizaki High Volume Commercial Ice-maker and Separate Fridge in aft Deck Cabinet

### 29. **Swimming Platform Area**

30. Built-in shower with hot/cold water.
31. Swim ladder on STBD side.
32. S/S safety rail on swim platform
33. City Water Inlet

### **Light**

34. LED courtesy lights.
35. LED bulwark w/ flush mounted deck lights
36. LED ceiling lights
37. LED white light with 24VDC transformer on Horizon group logo in P&S.
38. Wiring for boat name on transom.
39. AQUA SIGNAL navigation lights.
40. Cockpit down lights.
41. 2 X Aft Docking Flood lights
42. 4 x Aqualuma Underwater Lights

### **C. Flybridge:**

1. Non-skid flybridge cambered deck with ample drainage.
2. Flybridge Infinity Carpet
3. Helm station with stainless wheel and instrument console.
4. Single STIDD helm chair
5. FRP Arch & FRP Hardtop.
6. Wet bar package:
  - o FRP module bar with sink, with hot and cold water.
  - o 2 x DC fridge in bar.
7. Corian Counter top table with seating.
8. Sunning bed/ Bench Seat stb side of helm console with cushions
9. Ample locker space for storage.
10. wdl 800 Steelhead Crane
11. Covers for F/B Seating and console
12. Covers for aft deck seating, aft deck table and flybridge Table

### **E. Engine Room and Equipments:**

1. Sound and heat insulated compartments

2. Delta –T Moisture eliminators for engine rooms.
3. DC 24Volt lights.
4. One AC outlet per engine room.

## **F. Electrical system:**

### **General**

1. Color-coded wiring for easy identification.
2. Premium DC distribution board with switches, voltmeter and amp meter.
3. Outlets in Salon / bar / galley / cabins / fly-bridge / aft deck / engine room.
4. Vimar switches for lights and electrical outlets.

### **AC/DC Main Power System**

5. AC power supply from generator / shore power.
6. Cummins Onan 17.5kw Generator (1471 hours)
7. Selector switch for AC power supply.
8. Remote panel for generator.
9. Four AGM Batteries for engine & generator start up.
10. Two AGM Batteries for ship's service power.
11. BEP battery switch.
12. One battery charger for all batteries.
13. One inverter 3.0 KW.
14. Premium AC panel with switches

## **G. Mechanical system:**

### **Fuel and Lube Oil System**

1. Racor 900FG filters for both engines.
2. One oil change pump for engines, generator and Gearboxes.

### **Fresh Water System**

3. 300 Gal of water tanks integral to hull.
4. Color coded piping for easy identification.
5. Marine grade lines for fresh water system
6. One 17 Gal/110V or 220V water heater.
7. 2 x High volume 24V Headhunter Xclaiger fresh water pump with accumulator tank.
8. Fresh water washdown for anchor.
9. Fresh Water Washdown on Aft Deck.

### **10. Sanitary System**

11. 2 x 30 Gal of holding tank integral to hull
12. Electric fresh water flush toilets, pumps with Y valve for automatic discharge. and dock side

pump out (2).

### **Bilge Water System**

13. 4x electric 24V bilge pumps.
14. High level bilge water alarm.

### **Fire Safety System**

15. One Seafire automatic/manual fire extinguisher in each engine room.

### **Air Conditioning System**

16. Marine Air –central air conditioning for each cabins and salon.
17. Flybridge Airconditioning
18. Air Cond. Self cleaning system
19. Hyd. Trim tab system

## **H. Interior Design and Equipment:**

### **Interior Finish**

1. Walnut HardWood flooring.
2. Tempered safety glass windows.
3. Soft furnishings including Hunter Douglass Electric blinds and accent wood finishing.

### **Heads and Showers General**

4. Wood floor.
5. Corian countertops.
6. Fabric blind over large window.
7. Portlights for ventilation.
8. Basin, cabinets and mirrors.
9. Walk-in separate shower.
10. Linen Cupboard inboard of the M/S shower.
11. Separate toilet.
12. Lights in Overhead.
13. Extractor fan.

### **Saloon**

14. Salon seating covered in fabric.
15. Coffee table
16. Cabinet for Crystal Glasses.
17. Electric Pop up TV.
18. Hunter Douglas Automated Pirouette Blinds connected to Elan Home Automation System
19. Two hatches with screen on top of salon roof

## **Galley/ Dinette**

20. Wood floor.
21. Corian counter tops.
22. Large Single sink with Disposal and Pull out Faucet.
23. Sub Zero 700TCI fridge with dual Freezer drawers and built in ice maker
24. GE Avantium Oven/Convection Microwave
25. GE 30' 4 burner Cooktop
26. Custom accent wood carpentry.
27. Custom wooden carpentry for galley, cupboards and counters.
28. Cutlery & crockery drawers.
29. Pot drawer & spice drawers.
30. Additional storage drawers and cupboards.
31. Under counter trash drawer.
32. Fischer Paykel Dishwasher

## **VIP stateroom:**

33. Queen bed, semi walk around.
34. Custom wood accent carpentry.
35. Carpeted floor
36. Deck hatch with screen & opening.
37. Hunter Douglas Pirouette blind over large window.
38. Soft furnishings.
39. Night stands with light switches and outlets.

## **Port Aft guest stateroom:**

40. Custom wood accent carpentry.
41. Carpeted floor.
42. Opening port lights in hull side.
43. Hunter Douglas Pirouette Blinds
44. Soft furnishings.
45. Twin beds with insert to Queen
46. Storage beneath bed.
47. Cabin lights.
48. Shared bathroom with VIP cabin.

## **Master Stateroom**

49. Custom carpentry for accent finishing.
50. Carpeted floor.
51. Deck hatch with screen & opening.
52. Hunter Douglas Pirouette blinds over large window
53. Queen size bed, semi walk around.
54. Large full height Hanging closets.



55. Closets for linens / towels and clothes.
56. Cabin lights.
57. Night stands with light switches and outlets.

### 1. **Navigation & Instrumentation: & Audio Video Equipment:**

1. 2 x Furuno 15" T2 touch screen chart plotter with GPS antenna on Flybridge.
2. Furuno Auto pilot on Flybridge and Salon.
3. Furuno 4kw 3.5ft open array radar.
4. 2 x Furuno DST800 Depth transducers.
5. Icom IC-M504 VHF on flybridge.
6. ACR RCI 100D Spotlight on Flybridge
7. FLIR Thermal/Night Vision Camera
8. 8ft Digital Antenna for VHF/AIS
9. Furuno Class B AIS Transponder
10. Furuno FDF Fishfinder
11. Garmin GC10 Marine Engine room Cameras x 2
12. 3 x Axis all weather Security Cameras connected to Elan System
13. Sirius XM Module and Antenna
14. JL Audio Sub woofer & 4 x 7" JL Audio Speakers on Flybridge
15. 2 x JL Audio Sub Woofers and 4 x JL Audio 7" speakers on Aft Deck
16. Crestron Media Distribution Center (DM-MD6x4)
17. Elan HC12 Sysetm Controller
18. Power Distribution Wattbox
19. Elan AM/FM Tuner (DT11)
20. Integra DTS-HD THX 5.1 surround sound processor (DTR-40.5)
21. Elan Integrated Multiroom Audio Controller (S1616A)
22. Crestron 3 - Series Advanced Control Processor
23. Cisco Linksys router in Salon
24. 160 GB Apple TV with aplle stream
25. X-Box x 2 which receive Bluray
26. Sirius XM radio
27. 40" Samsung LED TV in Salon
28. 32" Samsung LED TV in Master
29. 32" Samsung LED TV in VIP
30. 32" Samsung TV on Aft Deck
31. KVH HD7 Satellite TV with Dummy Dome
32. 160 GB Apple TV in Salon
33. Apple TV in Master Stateroom
34. Sat TV displays on Flybridge Furuno
35. Wave WiFi Internet
36. Cradlepoint Cellular Internet
37. APC Alternate Power Supply

### 1. **1. Additional Equipment:**

1. Full Bow Deck Cushions
2. Flybridge Clear Enclosure
3. 1800 Gal/day Water-maker Sea recovery (114 Hours)
4. Fresh water UV Sterilization system
5. Infinity Flybridge Carpet
6. Fitted Pull up carpet in Salon and Galley
7. V-Kool on all windows
8. Spur Line Cutters
9. Burnewiin Rod Holder system
10. Full Seacrylic enclosure on Flybridge
11. 27" LYNX Pro Stainless BBQ with 48,000BTU and rotisserie
12. Dual X-Caliber Water pumps
13. ELAN Home Entertainment System
14. Alternate Power Supply
15. List of Extensive Spares
16. Wheelhouse Yacht Management System

---

## Exclusions

Owner's personal belongings.

---

## Disclaimer

The Company offers the details of this vessel or yacht in good faith but cannot guarantee or warrant the accuracy of this information nor warrant the condition of the vessel. A buyer should instruct his representatives, agents, or his surveyors, to investigate such details as the buyer desires validated. This vessel or yacht is offered subject to prior sale, price change, or withdrawal without notice.

# PHOTOS

**STABLE PLATFORM**



**WIDE STERN**



**SIDE DECKS**



**BOW CUSHIONS**



**FOREDECK**



**AFT DECK TABLE**



**FLYBRIDGE**



**SEATING**



**HELM WITH LOUNGER**



**HELM**



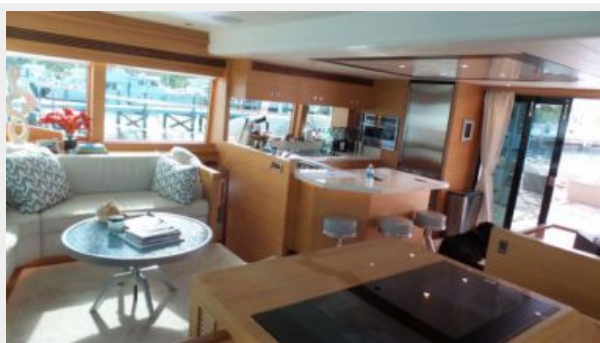
**FLYBIDGE DECK**



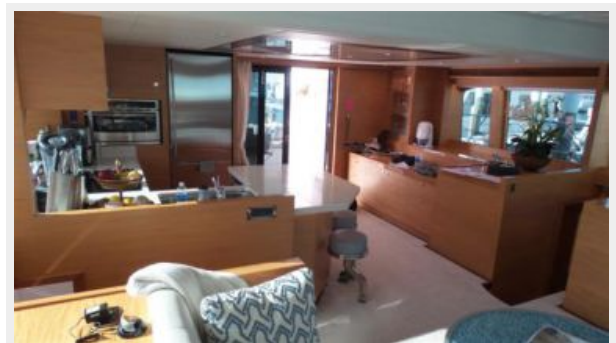
**SALON 1**



**SALON 2**



**SALON 3**





### SALON 4



### MASTER STATEROOM



### MASTER BATH 2



### MASTER BATH 1



### MASTER PASSAGE



### VIP STATEROOM



### VIP BATHROOM



### TWIN CABIN



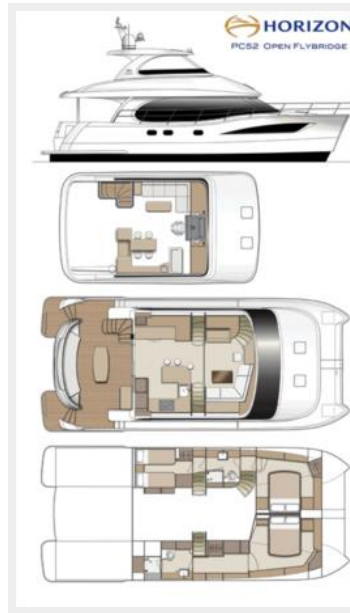
### STACKED WASHER/DRYER



### AV RACK



## LAYOUT



# CONTACTS

---

Andrey Shestakov, leading yacht broker of the sales department of Shestakov Yacht Sales Inc. Shestakov Yacht Sales Inc., the official representative of the Miami/Fort Lauderdale FL headquarters.

## Contact details

---

Email: [andrey@shestakovyachtsales.com](mailto:andrey@shestakovyachtsales.com)

Web: [shestakovyachtsales.com/en/](http://shestakovyachtsales.com/en/)

## Telephones

---

USA: +1(954)274-4435

## Office hours

---

Monday – Saturday: **9:00 - 21:00** EDT

Sunday: **closed**

## Address

---



Harbour Towne Marina, 850 NE 3rd St,  
STE 213, Dania, FL 33004