

## SEA SIX — RIVA



**Судостроитель:** RIVA

**Год постройки:** 2010

**Модель:** Мега-яхта

**Цена:** **ЦЕНА ЯХТЫ ПО ЗАПРОСУ**

**Местонахождение:** United States

**Длина общая:** 92' 0" (28.04m)

**Ширина:** 22' 0" (6.71m)

**Макс. осадка:** 7' 6" (2.29m)

**Крейс. скорость:** 20 Kts. (23 MPH)

**Макс. скорость:** 24 Kts. (28 MPH)

Купить **SEA SIX — RIVA** а также выбрать подходящую вам яхту из нашего каталога яхт вам поможет опытный яхтенный брокер Андрей Шестаков. На сегодняшний день компания **Shestakov Yacht Sales Inc.** имеет большое количество яхт в собственном списке продаж, а также тесно сотрудничает со всеми крупными яхтенными производителями по всему миру.

Для того чтобы купить яхту **SEA SIX — RIVA** а также проконсультироваться по любому вопросу связанному с покупкой, продажей, чартером яхт позвоните по телефону **+7(918)465-66-44**.

# ОГЛАВЛЕНИЕ

---

ОГЛАВЛЕНИЕ	2
ХАРАКТЕРИСТИКИ	4
Обзор	4
Основная информация	4
Размеры	4
Скорость, вместимость и масса	4
Размещение	4
Корпус и палуба	5
Информация о двигателе	5
ПОДРОБНОЕ ОПИСАНИЕ	6
Walkthrough	6
Main Salon and Dining	6
Galley And Laundry	6
Master Stateroom	7
VIP Stateroom Forward	7
Guest Staterooms- Port and Starboard	8
Crew Quarters	8
Entertainment Systems	8
Pilothouse	8
Flybridge	9
Navigation System	9
Communication Systems	9
Machinery	10
Lazarette/Beach Platform	10
Aft Deck	10
Deck Equipment	10
Toys and Tenders	10
Broker Comments	10

---

Исключения	11
Отказ от ответственности	11
ФОТОГРАФИИ	12
КОНТАКТЫ	22
Контактная информация	22
Телефоны	22
Время работы	22
Адрес	22

# ХАРАКТЕРИСТИКИ

## Обзор

SEA SIX was built to U.S. spec and is the only one available in America. She had a recent refit to include a complete exterior paint job. Her hull is now a head turning bronze, which compliments her sleek lines and styling.

## Основная информация

Тип судна: Мега-яхта

Модельный год: 2010

Год постройки: 2010

Страна: United States

Открытая палуба мостика: Да

## Размеры

Длина общая: 92' 0" (28.04m)

Ширина: 22' 0" (6.71m)

Макс. осадка: 7' 6" (2.29m)

## Скорость, вместимость и масса

Крейс. скорость: 20 Kts. (23 MPH)

Макс. скорость: 24 Kts. (28 MPH)

Вместимость воды: 349 Gallons

Объем топливного бака: 2377 Gallons

## Размещение

Всего кают: 4

Спальные места: 8

Каюта капитана: Да

Каюты экипажа: 3

Койки экипажа: 5

Спальных мест экипажа: 6

## Корпус и палуба

---

**Материал корпуса:** Fiberglass

**Комплектация корпуса:** Semi-Displacement

## Информация о двигателе

---

**Двигатели:** 2

**Производитель:** MTU

**Модель:** 16V2000 M93

**Тип двигателя:** Inboard

**Тип топлива:** Diesel

---

# ПОДРОБНОЕ ОПИСАНИЕ

---

## Walkthrough

---

SEA SIX represents a 2010 92' Riva Duchessa. Upon boarding SEA SIX, guests are welcomed to a large aft deck which features a custom table with forward facing seating and chairs for eight guests. The full teak walk-around decks take guests from the aft deck to the forward bow seating and sun pad. Forward from the aft deck, guests enter the main salon which features white painted wood floors accented by cherry paneled walls. Starboard is U-shaped seating with one large sofa and two loveseats with wonderful views from the large bay windows. Moving forward guests enter the dining area which accommodates eight at a large table with chairs. Forward port of the main salon and dining areas, guests will find stairs to the lower deck containing 4 staterooms. The day head is located port of the stairs. The lower deck is laid out with a queen VIP forward, two twin staterooms mid-ship, and the full-beam master located aft. Each stateroom has en suite head and shower. The master features a split his and hers conjoined by a walk in shower. Forward starboard of the main salon and dining, guest will enter the pilothouse. The pilothouse includes two separate seating areas with a table. Starboard of the pilothouse, stairs lead to the flybridge. Forward of the pilothouse is the fully equipped galley including wine cooler, electric cook top, oven, and side-by-side refrigerator. Port side off the galley is the captain's cabin with en suite head and shower. Forward of the galley are two twin bunk crew cabins with shared head and shower.

## Main Salon and Dining

---

The salon area is fitted with a light colored wood floor throughout complimenting the cherry wood walls. Eight large windows allow for natural light to enter both spaces. U-shaped seating and leather coffee table sit across from the Sony TV on electric lift. The wood dining table can accommodate eight guests.

- (8) Large windows
- Sony TV on electric lift
- Leather coffee table with storage
- A/V locker with Sony Blu-Ray DVD, Bose Surround Sound, Kalidescape System
- Cabinetry port and starboard
- Vitrefrig refrigerator is located port side aft

## Galley And Laundry

---

Located forward of pilothouse, the galley offers crew access from the main deck. The galley is well fitted for gourmet food preparation.

- Corian countertop

- Miele 6-burner cooktop
- Miele oven
- Miele dishwasher
- Broan Elite trash compactor
- Gaggenau side-by-side refrigerator/freezer
- Whynter wine cooler
- General Electric microwave
- Miele side by side washer/dryer

---

## Master Stateroom

---

SEA SIX offers a well-appointed full-beam master with island berth on the lower deck. Nightstands are located port and starboard, both with built in cabinets. A full walk in closet is located starboard in the companionway. A desk/vanity is located port side with six drawers and leather chair. A settee is positioned starboard side under a large bay window allowing for natural lighting in the master. The his and hers split master head is shown with marble top counters with two bowl sinks, shower stall, large bath, and with head/bidet.

- Island berth
- Walk-in closet with drawers, hanging bar, and safe
- Built-in desk with chair and six drawers
- Sony TV

### Master Head

- Marble counters with double sinks
- Split His/Hers conjoined by central shower
- Built-in rain shower
- Window with blinds

---

## VIP Stateroom Forward

---

The VIP stateroom is located on lower forward. The VIP is fitted with queen size berths and bath with walk in shower and head/bidet.

- Queen size berth
- Berth base with storage drawers
- Storage located port and starboard
- Nightstands, port and starboard
- Sony TV

### VIP Head

- Separate head/ bidet

- Walk in shower
- Mounted sink with faucet

---

## Guest Staterooms- Port and Starboard

---

Two twin berths are located port and starboard mid-ship. Each stateroom has en-suite shower and head.

- Single berth inboard and outboard
- Step access to forward head
- (3) Storage cabinets above berths
- Wardrobe with interior light

Port and Starboard Heads:

- Head/bidet
- Mounted sink with mirror back splash
- Enclosed shower

---

## Crew Quarters

---

The crew quarters are located forward of the galley. A captain's cabin is located port side with a full berth and en-suite head/shower. Two forward cabins each have upper/lower berths. The forward cabins share a central head/shower.

- Upper and lower single berth with storage pocket and reading light
- Hanging locker with dressing mirror
- Miele side by side washer/dryer is located aft of crew area

---

## Entertainment Systems

---

Video Equipment Main Salon: 40" Sony Flat Screen Audio Equipment Main Salon: Bose Surround Sound

---

## Pilothouse

---

The pilothouse can be accessed from the main companionway. The pilothouse is equipped with the latest electronics including Furuno NavPilot, Furuno NavNet 3D, (2) flatscreen monitors, and bow and stern thruster controls. There are two seating areas in the pilothouse, including one large table for guests to enjoy the wonderful views.

Pilothouse



- (2) Flatscreen monitors
- Simrad VHF radios
- Iridium Sat Phone
- Lighted alarm panel to bilge pumps, high water alarms, pumps, etc
- KVH Trac Vision
- ABT Stern and Bow thruster controls
- ABT Trac stabilizers
- Nav Net computer system
- Inim Fire Control system
- U-shaped upholstered seating
- Wood table

## Flybridge

---

The Flybridge is accessed via stairs located on the aft deck, or through an interior set of stairs by the pilothouse. This area is wonderful for entertaining and enjoying the sunshine on the large sunpads. The flybridge is equipped with a Miele electric cooktop, BBQ, and a small refrigerator and icemaker. A 12' Nautica jet boat is located aft behind the davit.

- Miele electric cooktop
- Miele BBQ
- Refrigerator and Icemaker
- Sunning pads
- 12' Nautica tender
- Besenzoni davit

## Navigation System

---

- Auto Pilot: Simrad AP24
- Chartplotter: Furuno NavNet 3D
- Radio: Furuno FS-2570 SSB
- RadioSounder: Furuno DFF1 Network
- SAT Receiver: Trac Vision HD7
- SAT Phone: Iridium 9555

## Communication Systems

---

- SATcom: Iridium SAT Com
- VHF: Simrad

---

## Machinery

---

Main Engines Engine Type: (2) MTU 16V 2000 M93 2435HP Engine Hours: Port:1,811 Starboard: 42 Gearboxes for Main Engines: ZF Drive: V Drive Speed Consumption per hours/Range RPM Maximum: 30 Cruising: 27 Economical: 13 Generators & Electricity Output: 2x 27kW Generators: 2x Kohler Generator Hours: Port: 3,214 Starboard: 3,343 Shore Power: 1x 100AMP 3 Phase Atlas converter Air Conditioning 2x Condaria Systems: (4) chillers aft (2) chillers forward Other Machinery Watermakers: Idromar MC3J Trim Tabs/Stabilizers: ABT Trac Fins Bow Thruster: American Bow Thruster ( Bow and Stern) Steering System: BCS Fuel Separator & Filtration: Racor filter Sewage System: Hamann

---

## Lazarette/Beach Platform

---

SEA SIX features a hydraulically actuated aft transom door with teak overlay. When this door is lowered it converts into the beach access.

---

## Aft Deck

---

Accessed via teak staircase port or starboard side from the swim platform offering easy access to the water. The passerelle is located starboard aft allowing for stern to dockage. The custom table allows up to 8 guests to enjoy the open air while dining. Full teak walk around decks with access to seating in the bow and large sun pad. There is a remote control station located on the port side aft.

- Teak decks
- Access to swim platform and beach club
- Custom table with upholstered forward facing seating and 4 chairs
- Full teak cap rails
- Access to upper deck via ten teak stairs

---

## Deck Equipment

---

Anchor Windlass: Lofrans Boat Crane and Davits: Besenzoni Passerelle: Besenzoni

---

## Toys and Tenders

---

Yamaha VX Deluxe Waverunner

---

## Broker Comments

---

SEA SIX is an one owner 2010 Riva 92 Duchessa. She is built to U.S. specs and is the only one

available in America. SEA SIX'S offering is a special situation. Price reflects vessel's hull repair due to an incident while cruising the Bahamas. Please contact Broker for further details.

## **Исключения**

---

При продаже яхты исключаются личные вещи владельца.

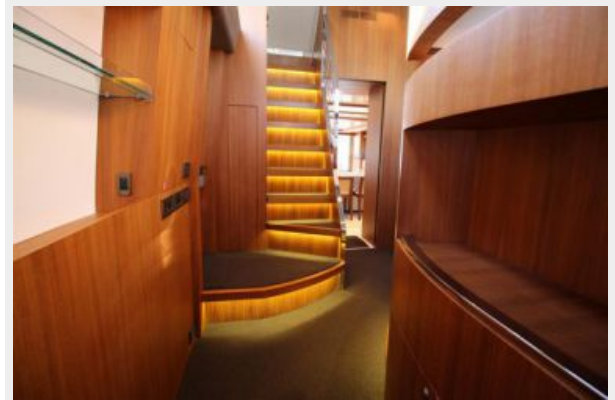
## **Отказ от ответственности**

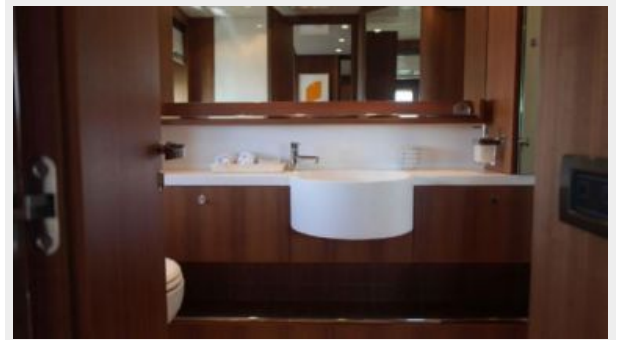
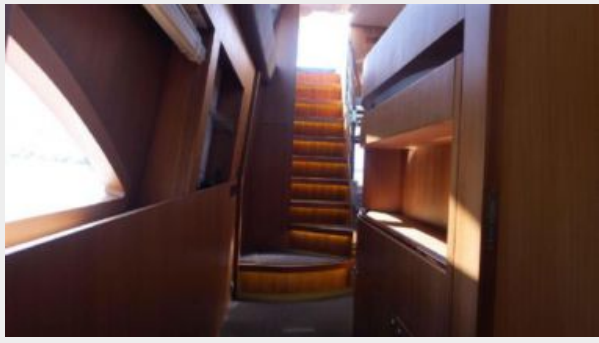
---

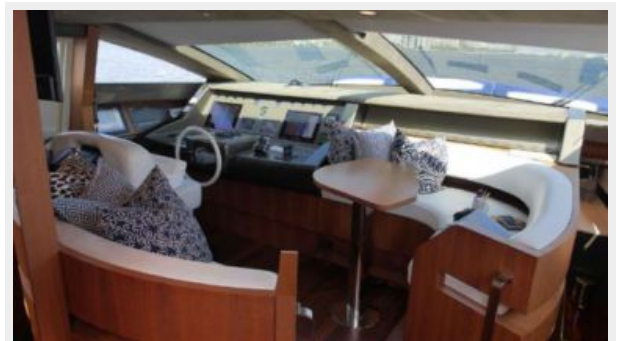
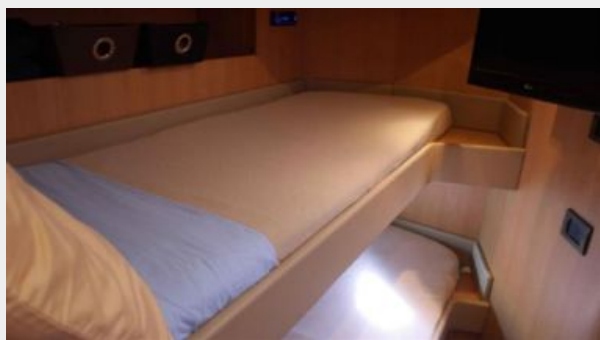
Компания предоставляет описание судна или яхты добросовестно, но не может гарантировать точность этой информации, а также не ручается за техническое состояние. Покупатель должен проинструктировать своих агентов или оценщиков исследовать представленную информацию более подробно, по собственному желанию. Продажа судна или яхты, изменение цены или снятие с продажи будет происходить без предварительного уведомления.

# ФОТОГРАФИИ





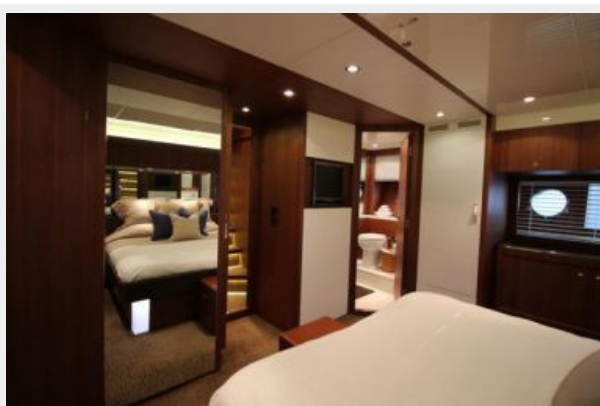
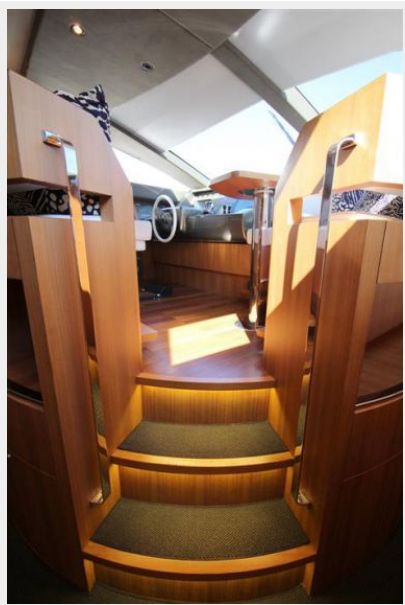




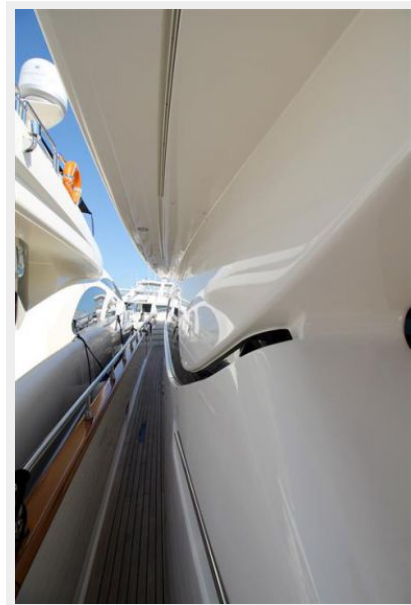














# КОНТАКТЫ

---

Андрей Шестаков (Andrey Shestakov) – ведущий яхтенный брокер отдела продаж яхт и судов компании Shestakov Yacht Sales Inc. Официальный представитель Shestakov Yacht Sales Inc. для русскоговорящих клиентов в центральном офисе компании в Майами/Форт Лодердейл/Флорида/США.

## Контактная информация

---

Email: [andrey@shestakovyachtsales.com](mailto:andrey@shestakovyachtsales.com)

Web: [shestakovyachtsales.com](http://shestakovyachtsales.com)

## Телефоны

---

Краснодарский край: **+7(918)465-66-44**

США, Майами, Флорида: **+1(954)274-4435**

## Время работы

---

Понедельник – Суббота: **9:00 - 21:00**  
EDT

Воскресенье: **Закрыто**

## Адрес

---



Harbour Towne Marina, 850 NE 3rd St,  
STE 213, Dania, FL 33004