

## PURA VIDA — AZIMUT



**Builder:** [AZIMUT](#)

**Year Built:** 2007

**Model:** Motor Yacht

**Price:** PRICE ON APPLICATION

**Location:** United States

**LOA:** 80' 0" (24.38m)

**Beam:** 19' 0" (5.79m)

**Min Draft:** 5' 11" (1.80m)

**Max Draft:** 5' 11" (1.80m)

**Cruise Speed:** 22 Kts. (25 MPH)

**Max Speed:** 25 Kts. (29 MPH)

Our experienced yacht broker, Andrey Shestakov, will help you choose and buy a yacht that best suits your needs **Pura Vida — AZIMUT** from our catalogue. Presently, at Shestakov Yacht Sales Inc., we have a wide variety of yachts available on our sale's list. We also work in close contact with all the big yacht manufacturers from all over the world.

If you would like to buy a yacht **Pura Vida — AZIMUT** or would like help answering any questions concerning purchasing, selling or chartering a yacht, please call **+1(954)274-4435**

# TABLE OF CONTENTS

TABLE OF CONTENTS	2
SPECIFICATIONS	5
Overview	5
Basic Information	5
Dimensions	5
Speed, Capacities and Weight	5
Accommodations	6
Hull and Deck Information	6
Engine Information	6
DETAILED INFORMATION	7
Certification	7
Salon	7
Galley	7
Master Stateroom	8
Master Head	8
VIP Stateroom	8
VIP Head	9
Port Guest Stateroom	9
Port Guest Head	9
Starboard Guest Stateroom	9
Starboard Guest Head	10
Crew Lounge/Laundry	10
Crew Head	11
Starboard Crew Stateroom	11
Outside and Deck	11
Flybridge	11
Electronics	12
Foredeck	12

Aft Deck	13
Pilothouse	13
Engine Room	13
Disclaimer	14
Exclusions	14
Disclaimer	14
PHOTOS	16
80' Azimut 2008 - Pura Vida	16
80' Azimut 2008 - Pura Vida	16
80' Azimut 2008 - Pura Vida	16
80' Azimut 2008 - Pura Vida	16
80' Azimut 2008 - Pura Vida	16
80' Azimut 2008 - Pura Vida	16
80' Azimut 2008 - Pura Vida	17
80' Azimut 2008 - Pura Vida	17
80' Azimut 2008 - Pura Vida	17
80' Azimut 2008 - Pura Vida	17
80' Azimut 2008 - Pura Vida	17
80' Azimut 2008 - Pura Vida	17
80' Azimut 2008 - Pura Vida	17
80' Azimut 2008 - Pura Vida	18
80' Azimut 2008 - Pura Vida	18
80' Azimut 2008 - Pura Vida	18
80' Azimut 2008 - Pura Vida	18
80' Azimut 2008 - Pura Vida	18
80' Azimut 2008 - Pura Vida	18
80' Azimut 2008 - Pura Vida	19
80' Azimut 2008 - Pura Vida	19
80' Azimut 2008 - Pura Vida	19
80' Azimut 2008 - Pura Vida	19

---

80' Azimut 2008 - Pura Vida	20
80' Azimut 2008 - Pura Vida	20
80' Azimut 2008 - Pura Vida	20
80' Azimut 2008 - Pura Vida	20
80' Azimut 2008 - Pura Vida	20
80' Azimut 2008 - Pura Vida	20
80' Azimut 2008 - Pura Vida	21
80' Azimut 2008 - Pura Vida	21
80' Azimut 2008 - Pura Vida	21
80' Azimut 2008 - Pura Vida	21
80' Azimut 2008 - Pura Vida	21
80' Azimut 2008 - Pura Vida	21
80' Azimut 2008 - Pura Vida	21
80' Azimut 2008 - Pura Vida	21
80' Azimut 2008 - Pura Vida	22
80' Azimut 2008 - Pura Vida	22
80' Azimut 2008 - Pura Vida	22
80' Azimut 2008 - Pura Vida	22
80' Azimut 2008 - Pura Vida	22
80' Azimut 2008 - Pura Vida	22
80' Azimut 2008 - Pura Vida	22
80' Azimut 2008 - Pura Vida	22
80' Azimut 2008 - Pura Vida	23
80' Azimut 2008 - Pura Vida	23
80' Azimut 2008 - Pura Vida	23
80' Azimut 2008 - Pura Vida	23
80' Azimut 2008 - Pura Vida	23
CONTACTS	24
Contact details	24
Telephones	24
Office hours	24
Address	24

---

# SPECIFICATIONS

---

## Overview

---

Open to trade-ins. Financing is available through our network of providers. The Azimut 80' is a Super Yacht representing Italian Elegance. It has an aerodynamic Sophisticated design that emphasizes beauty and comfort at every angle.

The Azimut captures natural warmth and light with its sleek window design and impeccable finish. "Pura Vida" is the perfect example of an Azimut with an owner with no limits, and an open checkbook. Duty not paid.

## Basic Information

---

**Category:** Motor Yacht

**Model Year:** 2007

**Year Built:** 2007

**Country:** United States

**Fly Bridge:** Yes

## Dimensions

---

**LOA:** 80' 0" (24.38m)

**Beam:** 19' 0" (5.79m)

**Min Draft:** 5' 11" (1.80m)

**Max Draft:** 5' 11" (1.80m)

## Speed, Capacities and Weight

---

**Cruise Speed:** 22 Kts. (25 MPH)

**Max Speed:** 25 Kts. (29 MPH)

**Displacement:** 120000 Pounds

**Water Capacity:** 396 Gallons

**Holding Tank:** 174 Gallons

**Fuel Capacity:** 1584 Gallons

---

## Accommodations

---

**Total Cabins:** 4

**Total Berths:** 7

**Sleeps:** 9

**Total Heads:** 4

**Crew Cabin:** 2

---

## Hull and Deck Information

---

**Hull Material:** Fiberglass

---

## Engine Information

---

**Engines:** 2

**Manufacturer:** Caterpillar

**Model:** C32

**Engine Type:** Inboard

**Fuel Type:** Diesel

---

# DETAILED INFORMATION

---

## Certification

---

As-is

## Salon

---

- Overhead paneling with recessed lights
- Wood valances, port and starboard
- Drop-shades and drapes, port and starboard
- Drapes, aft
- Curved cherry cabinetry, port, with Vizio flat screen TV with remote control (New)
- Bose stereo
- Bose speakers, port and starboard
- Burlled wood countertop, port and starboard outboard
- Coffee table, port and starboard
- L Shape White Leather Sofa to Port
- White Leather Sofa To Starboard
- White Leather Chair AftCoffee Table
- Dining Salon
- Marble tiled sole Cherry wood overhead trim piece with inlay and 5 recessed lights
- Built-in cabinetry, port, with privacy shutters to galley, three lower cabinets for secured glassware and china storage
- Oval dining table with seating for 8
- U Line ice maker

## Galley

---

- Built-in twin refrigerators and twin freezers, forward - Frigomar
- Pantry, forward inboard
- Door to port deck
- Two Cherry-wood cabinets, port outboard and center-line inboard, w/ granite countertops
- Miele 4 burner cook-top
- GE Profile/Microwave Oven
- Miele dishwasher
- Two round stainless steel sinks
- Built-in cabinets overhead, port outboard and center-line inboard
- Stairway to crew quarters and engine room, aft
- U Line Ice Marker

- ISE trash compactor

---

## Master Stateroom

---

- MID Ship Full Beam State Room
- King Size Island Berth
- Two Drawers Below Berth
- Mirror on Aft Bulkhead
- Over Head Soffit with Two Recessed Light
- Oval Portlights, Three Port and Three Starboard with Deep Shades and Curtain
- Settee to starboard.
- Dresser to port with an plenty of Drawer Storage.
- Cherry wood overhead soffit with four recessed lights
- Cruisair SMX-II air conditioning control
- Sony AM/FM
- CD player
- LG flat screen Smart TV (New)
- Walk-in closet to Port with overhead recessed lights

---

## Master Head

---

- Teak Sole
- Fiberglass overhead with recessed light
- Fiberglass soffit over countertop with three recessed lights
- Vanity, outboard, with marble countertop and two sinks
- Two mirrored medicine cabinets
- Porthole with shades
- Tecma head
- Walk-in shower with overhead light
- Tecma bidet
- Rain Shower with jets

---

## VIP Stateroom

---

- Forward with Queen size Island Berth
- Overhead soffit with 3 Recessed Light
- Two Drawers below the Berth
- Cruise Air SMX-II Air condition
- 15" LG Flat screen Smart T.V (New)
- Hanging Locker to Starboard
- Full Head to Port



- **Plenty of Storage throughout**
- **LG AM/FM CD Player**
- **Curtains**
- **Overhead Hatch**

---

## **VIP Head**

---

- **Fiberglass overhead with three recessed lights**
- **Built-in curved wood cabinet to port with marble countertop, backsplash, sink with faucet**
- **Wood frame mirror over sink**
- **Tecma head**
- **Circular Lexan door to shower**
- **Teak Floor**
- **Port Hole**
- **Rain Shower with Jets**

---

## **Port Guest Stateroom**

---

- **Ultrasuede overhead with recessed lights**
- **Single berths to port and starboard**
- **Pullman berth**
- **Mirrored panels, aft**
- **Hanging locker to port with light**
- **Cruisair SMX-II air conditioning control**
- **Two stereo speakers**
- **Porthole with shade**
- **Sony AM/FM**
- **CD player**
- **LG Flat Screen Smart T.V (New)**

---

## **Port Guest Head**

---

- **Fiberglass overhead with three recessed lights**
- **Built-in cabinet to port and forward with marble countertop**
- **Shower area with circular Lexan door**
- **Tecma head**
- **Portlight with shade**

---

## **Starboard Guest Stateroom**

---

- **Single Berth to Port and starboard**
- **Pullman Berth**
- **Curtains**
- **Porthole**
- **Built-in nightstand between berths**
- **Sony AM/FM**
- **CD player**
- **Two stereo speakers**
- **Mirrored panels on forward bulkhead**
- **Hanging locker to starboard with light**
- **LG Flat Screen Smart T.V (New)**

---

## **Starboard Guest Head**

---

- **Entry via companionway and starboard stateroom**
- **Fiberglass overhead with recessed lights**
- **Built-in vanity with marble countertop and sink**
- **Mirrored panel above sink**
- **Tecma head**
- **Porthole with drop-shade**
- **Shower with Lexan circular door**

---

## **Crew Lounge/Laundry**

---

- **Eight steps down from galley with courtesy step lights**
- **Vinyl sole**
- **Vinyl overhead with recessed lights**
- **Portlights with drapes**
- **“L”-shaped dinette that converts to berth**
- **Built-in cabinet with granite countertop, stainless steel sink**
- **Miele Novotronic T4463C clothes dryer**
- **Miele Novotronic W3365 clothes washer**
- **Cruisair SMX-II air conditioning control**
- **Frigomar refrigerator**
- **Watertight door to engine room**
- **Boss AM/FM Radio**
- **CD player**
- **Ensigna T.V**
- **High water alarm**
- **Pullman Berth**

- **I Live 2 Burners Stove**
- **Table**

---

## **Crew Head**

---

- **Teak sole**
- **Fiberglass overhead with recessed lights**
- **Fiberglass vanity with molded sink**
- **Tecma head**
- **Mirror at vanity**
- **Stall shower**

---

## **Starboard Crew Stateroom**

---

- **Teak sole**
- **Vinyl overhead with recessed lights**
- **Cruisair SMX-II air conditioning control**
- **Upper and lower single berth**
- **Portlight with drapes**
- **Hanging locker**

---

## **Outside and Deck**

---

- **Two 50amp Shore Power inlets**
- **Passerelle**
- **Teak over fiberglass swim platform**
- **Twin garages, one set up for personal watercraft storage, second used as storage.**
- **Hydraulic swim ladder**

---

## **Flybridge**

---

- **Bench helm seat, forward on center and Seats 4**
- **Caterpillar display control panels**
- **Searchlight controls**
- **Trim-tab level indicator and controls**
- **Delta Nav intercom**
- **American Bow Thruster controls**
- **Raymarine E80**
- **Bimini top with stainless steel frame**
- **Grill with refrigeration below (Frigomar)**

- **Stainless steel safety rails**
- **12 person life raft**
- **Opacmare davit**
- **11 ft Dinghy Apex 2015**
- **Honda 15 hp outboard**
- **Stainless steel grab rail, port and starboard**
- **ZF single lever controls to each engine**
- **Radar Arch with:**
  - **GPS antenna**
  - **Single horn**
  - **Open array radar antenna scanner**
  - **Horn**
  - **Spotlight**
  - **GPS antenna**
  - **VHF antenna**
  - **Sun pad For 3**
  - **3 Yeti Coolers**

## **Electronics**

---

- **Searchlight (upper and lower stations)**
- **VHF (upper and lower stations) Raymarine 240 VHF**
- **Raymarine Radar (upper and lower stations)**
- **Raymarine ST2 Autopilot (upper and lower stations)**
- **Raymarine ST2 display head**
- **Raymarine E80 Nav system (upper and lower stations) (2)**
- **Raymarine ST2 Rudder angle indicator (upper and lower stations)**
- **Caterpillar display control panels (upper and lower stations)**
- **Stereo (upper and lower stations)**
- **Two stereo speakers**
- **Garmin 7612**
- **Garmin VHF 200**
- **Side Power**

## **Foredeck**

---

- **Teak decks**
- **Two stainless steel bow cleats**
- **Flagstaff**
- **Lofrans windlass with remote control**
- **Anchor wash-down**
- **Fire station**

- **Chain locker with center divider**
- **Approximately 90lb anchor**
- **250' of chain**
- **Bow sun lounge**
- **Lights with safety lenses**

---

## **Aft Deck**

---

- **Fiberglass overhang with recessed lights**
- **Two stereo speakers**
- **Teak deck**
- **Wood table on dual stainless steel pedestals with great seating**
- **Locker, port forward**
- **Lofrans warping winch, port and starboard, with foot switch**
- **Two lockers, aft**
- **Fire hose outlet, in center locker**
- **Control panel for aft stairway, port and starboard garages**
- **Stainless steel handrail**

---

## **Pilothouse**

---

- **Single lever ZF controls**
- **Touchscreen ship's systems control panel**
- **White Star compass**
- **Delta Nav intercom**
- **American Bow Thruster control**
- **Two stainless steel grab rails**
- **Caterpillar digital and analog displays**
- **Raymarine Ray 240E VHF radio**
- **Raymarine ST2 90 autopilot/display**
- **Raymarine E120 nav/radar system**
- **CAME CCTV camera control**
- **Raymarine ST2 90 rudder angle indicator**

---

## **Engine Room**

---

- **Atlas Frequency Converter for worldwide electric**
- **Fluorescent overhead A/C lights with safety lenses**
- **Kohler 27kw generator, with 1202 hours 4/2016**
- **Kohler 19kw generator, with 1183 hours 4/2016**
- **Racor fuel filters to each generator**

- **Hydraulics to davit, swim ladder, pod hatches and step door, trim tabs, steering**
- **Watermaker**
- **Mass 24/60- 12/25 automatic battery chargers for engine batteries and ship's batteries**
- **Main A/C circuit panel**
- **Two fiberglass muffler to generators with water separators**
- **Two 24volt freshwater system pumps**
- **Water heater**
- **Dripless shaft seals, port and starboard**
- **24Volt fuel transfer pumps**
- **Bilge pump to six compartment manifold**
- **Hand operated bilge pump**
- **Generator fuel supply manifold, centerline forward below decks**
- **Electric/automatic bilge pump**
- **High water alarm**
- **High volt fire pump system**
- **Oil change system**
- **Mechanical gauges to both engines**
- **Engine hours 925 Port and 925 STBD - 4/2016**
- **Emergency steering**
- **Air conditions raw water circulation pump**
- **A/C and D/C electric distribution panel**
- **Two CO2 handheld fire extinguishers**
- **ZF electronic engine control boxes**

---

## **Disclaimer**

The Company offers the details of this vessel in good faith but cannot guarantee or warrant the accuracy of this information nor warrant the condition of the vessel. A buyer should instruct his agents, or his surveyors, to investigate such details as the buyer desires validated. This vessel is offered subject to prior sale, price change, or withdrawal without notice.

---

## **Exclusions**

Owner's personal belongings.

---

## **Disclaimer**

The Company offers the details of this vessel or yacht in good faith but cannot guarantee or warrant the accuracy of this information nor warrant the condition of the vessel. A buyer should instruct his representatives, agents, or his surveyors, to investigate such details as the buyer desires validated. This vessel or yacht is offered subject to prior sale, price change, or withdrawal

without notice.

# PHOTOS

80' Azimut 2008 - Pura Vida



80' Azimut 2008 - Pura Vida



80' Azimut 2008 - Pura Vida



80' Azimut 2008 - Pura Vida



80' Azimut 2008 - Pura Vida



80' Azimut 2008 - Pura Vida





80' Azimut 2008 - Pura Vida



80' Azimut 2008 - Pura Vida



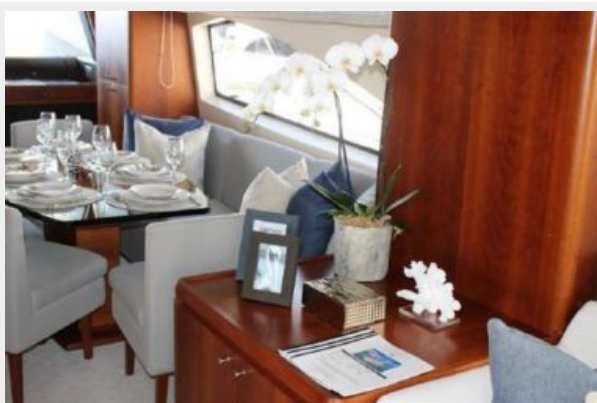
80' Azimut 2008 - Pura Vida



80' Azimut 2008 - Pura Vida



80' Azimut 2008 - Pura Vida



80' Azimut 2008 - Pura Vida



80' Azimut 2008 - Pura Vida



80' Azimut 2008 - Pura Vida



80' Azimut 2008 - Pura Vida



80' Azimut 2008 - Pura Vida



80' Azimut 2008 - Pura Vida



80' Azimut 2008 - Pura Vida



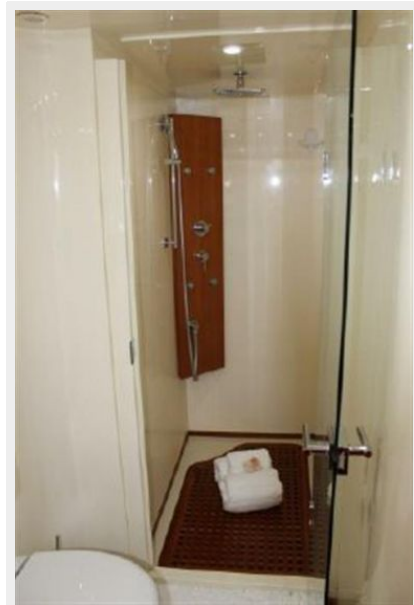
80' Azimut 2008 - Pura Vida



80' Azimut 2008 - Pura Vida



80' Azimut 2008 - Pura Vida



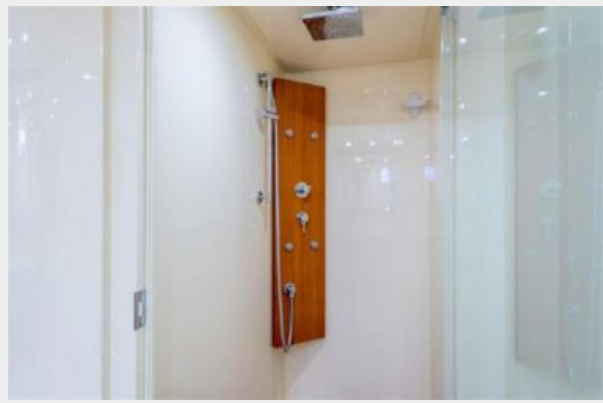
80' Azimut 2008 - Pura Vida





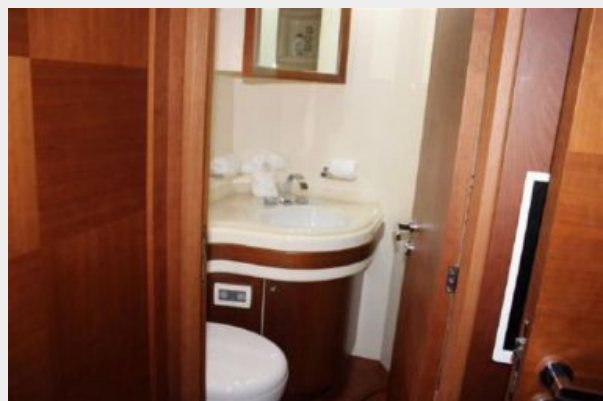
80' Azimut 2008 - Pura Vida

80' Azimut 2008 - Pura Vida



80' Azimut 2008 - Pura Vida

80' Azimut 2008 - Pura Vida



80' Azimut 2008 - Pura Vida

80' Azimut 2008 - Pura Vida



80' Azimut 2008 - Pura Vida



80' Azimut 2008 - Pura Vida



80' Azimut 2008 - Pura Vida



80' Azimut 2008 - Pura Vida



80' Azimut 2008 - Pura Vida



80' Azimut 2008 - Pura Vida





80' Azimut 2008 - Pura Vida



80' Azimut 2008 - Pura Vida



80' Azimut 2008 - Pura Vida



80' Azimut 2008 - Pura Vida



80' Azimut 2008 - Pura Vida



80' Azimut 2008 - Pura Vida



80' Azimut 2008 - Pura Vida



80' Azimut 2008 - Pura Vida



80' Azimut 2008 - Pura Vida



80' Azimut 2008 - Pura Vida



80' Azimut 2008 - Pura Vida



---

# CONTACTS

---

Andrey Shestakov, leading yacht broker of the sales department of Shestakov Yacht Sales Inc. Shestakov Yacht Sales Inc., the official representative of the Miami/Fort Lauderdale FL headquarters.

---

## Contact details

---

Email: [andrey@shestakovyachtsales.com](mailto:andrey@shestakovyachtsales.com)

Web: [shestakovyachtsales.com/en/](http://shestakovyachtsales.com/en/)

---

## Telephones

---

USA: +1(954)274-4435

---

## Office hours

---

Monday – Saturday: **9:00 - 21:00** EDT

Sunday: **closed**

---

## Address

---



Harbour Towne Marina, 850 NE 3rd St,  
STE 213, Dania, FL 33004