

## BLUE ABALONE — FERRETTI



**Судостроитель:** [FERRETTI](#)

**Год постройки:** 2015

**Модель:** Моторная яхта

**Цена:** **ЦЕНА ЯХТЫ ПО ЗАПРОСУ**

**Местонахождение:** Mexico

**Длина общая:** 69' 0" (21.03m)

**Ширина:** 18' 2" (5.54m)

**Мин. осадка:** 5' 6" (1.68m)

**Крейс. скорость:** 30 Kts. (35 MPH)

**Макс. скорость:** 33 Kts. (38 MPH)

Купить **Blue Abalone — FERRETTI** а также выбрать подходящую вам яхту из нашего каталога яхт вам поможет опытный яхтенный брокер Андрей Шестаков. На сегодняшний день компания **Shestakov Yacht Sales Inc.** имеет большое количество яхт в собственном списке продаж, а также тесно сотрудничает со всеми крупными яхтенными производителями по всему миру.

Для того чтобы купить яхту **Blue Abalone — FERRETTI** а также проконсультироваться по любому вопросу связанному с покупкой, продажей, чартером яхт позвоните по телефону **+7(918)465-66-44**.

# ОГЛАВЛЕНИЕ

---

ОГЛАВЛЕНИЕ	2
ХАРАКТЕРИСТИКИ	3
Основная информация	3
Размеры	3
Скорость, вместимость и масса	3
Размещение	3
Корпус и палуба	4
Информация о двигателе	4
ПОДРОБНОЕ ОПИСАНИЕ	5
Vessel Overview	5
Исключения	11
Отказ от ответственности	11
ФОТОГРАФИИ	12
КОНТАКТЫ	17
Контактная информация	17
Телефоны	17
Время работы	17
Адрес	17

# ХАРАКТЕРИСТИКИ

## Основная информация

Тип судна: Моторная яхта

Модельный год: 2015

Год постройки: 2015

Страна: Mexico

Верх: Hardtop

Открытая палуба мостика: Да

## Размеры

Длина общая: 69' 0" (21.03m)

Ширина: 18' 2" (5.54m)

Мин. осадка: 5' 6" (1.68m)

## Скорость, вместимость и масса

Крейс. скорость: 30 Kts. (35 MPH)

Дальность на крейсерской скорости:  
280

Макс. скорость: 33 Kts. (38 MPH)

Водоизмещение: 106263 Pounds

Вместимость воды: 262 Gallons

Объем топливного бака: 978 Gallons

## Размещение

Всего кают: 4

Спальные места: 8

Всего ком. состава: 3

Каюты экипажа: 1

Койки экипажа: 2

Спальных мест экипажа: 2

Комм. состав экипажа: 1

---

## Корпус и палуба

---

**Материал корпуса:** Fiberglass

---

## Информация о двигателе

---

**Двигатели:** 2

**Производитель:** MTU

**Модель:** V8 2000 M94

**Тип двигателя:** Inboard

**Тип топлива:** Diesel

# ПОДРОБНОЕ ОПИСАНИЕ

## Vessel Overview

The Ferretti 690 is a further step forward of the Ferretti Yachts fleet, characterized by the new design of outer lines, which are now sportier, with a sleeker and more dynamic profile. The wider glazing makes exteriors lighter and provides an amazing quantity of natural light to interior spaces. The interiors of the Ferretti 690, 21 meters or 69 feet long and 5.5 meters or 18 feet wide, are spacious and wisely organized, in order to exploit living areas at their best in both layouts. Volumes are notably enlarged by the natural light coming in from the wide windows.

The main deck features a rational distribution of spaces. Its elegant lines make it incredibly wider compared to the previous Ferretti 660. A vertically sliding glass partition allows separating this area from the rest of the saloon or leaving it open, turning the main deck into a large open space. The dining area and the sofa are located in the central part of the deck, enjoying wider spaces and featuring the utmost comfort for the guests. The flybridge has been renewed and bears witness to Ferretti's great care for indoor and outdoor layout optimization. Only the bar unit located near the access staircase has been maintained from previous models; everything else has been entirely redesigned so as to ensure all guests the utmost comfort.

### Salon

- Aft tempered glass sliding door with stainless steel frame
- Cabinets with shelves
- Bone white leather sofa
- Dining area
- Docking for I-POD
- 32' TV
- Bose 3-2-1 Surround sound system
- Electric raising device for TV
- Fitted carpet
- Indirect lighting
- Roman blinds on side windows
- Side windows with tilt opening
- KVH M5 SAT TV Antenna
- Smoke detectors
- Furniture modifications for US appliances
- Custom Decor package

### Galley

- Ceramic cook top with 4 burners
- Vent Fan
- Refrigerator

- Raritan Ice Maker
- Microwave Oven
- Bigger pantry
- Custom serving tray shelf
- Miele Washer/Dryer in Corridor
- Overhead cabinets
- Quartz counter tops
- Stainless steel sinks with hot/cold fresh water
- Sliding door to the salon
- Venetian blinds on aft tilting window

### Master Stateroom

- Double bed with drawers underneath
- Natural ventilation under bed
- Upholstered headboard
- Drawers
- Walk in wardrobe with hanging rail
- Bedside cabinets (2)
- Cabinet with shelves
- Chaise lounge
- Safe
- Reading lights (2)
- Roman blind
- Bose CD/DVD Stereo
- Sharp 19" TV
- IPOD docking station
- Carpet
- Mirror
- Indirect lighting
- Hull windows (2) with 4 openable stainless steel portholes

### Master Head

- Ceramic electric head
- Venetian blinds
- Lockers
- Mirror
- Shower with tempered glass door
- Stainless steel openable portholes (2)
- Corian sink and countertop
- Control panel
- Wood flooring

### VIP Stateroom Forward

- Double bed with drawer underneath
- Natural ventilation under bed
- Escape hatch
- Carpet
- Stainless steel openable portholes (2)
- Mirror
- Reading lights
- Roman blind
- Shelves
- Headboard
- Wardrobes with mirror (2)

#### VIP Head

- Ceramic electric head
- Venetian blinds
- Lockers
- Mirror
- Shower with tempered glass door
- Stainless steel openable porthole
- Corian sink and countertops
- Control panel
- Wood flooring

#### Guest Stateroom

- Two beds with drawers underneath
- Bedside table with drawers (2)
- Carpet
- Mirror
- Natural ventilation under beds
- Reading lights (2)
- Roman blind
- Stainless steel portholes (2)
- Headboards
- Wardrobe with mirror

#### Guest Head

- Ceramic electric head
- Mirror
- Overhead lockers and shelves
- Shower with plexiglass partition
- Stainless steel openable porthole
- Venetian blinds

- Corian sink and countertop
- Control panel
- Wood flooring

### Crew Quarters

- Access to the main deck area through non-slip steps
- Bed
- Bedside tables
- Cabinets with lockers
- Carpet
- Stainless steel openable portholes
- Wardrobe
- Crew Head
- Electric head with fresh water
- Lockers
- Mirror
- Shower with waterproof curtains
- Stainless steel openable porthole
- Sink with hot/cold fresh water

### Cockpit Deck

- Access to aft platform through a GRP step and a stainless steel gate
- Access to crew area through GRP non-slip steps
- Access to engine room through a hatch and stainless steel ladder
- Access to flybridge through GRP and teak steps and stainless steel handrail
- Aft platform with foldaway ladder
- Aft sliding door and tilting window
- Amplifier with remote control and loudspeakers
- Bow pulpit with side rails
- Cockpit cabinet with countertop and storage
- Cockpit lighting
- Electric windlass
- External acoustic alarm for bilge water level at bow and stern
- GRP deck flooring with non -slip surface
- Hand held shower with hot/cold fresh water on aft platform
- Hatches (2)
- Ice-maker
- Mooring stations (2)
- Shore line cable
- Cockpit cable
- Stainless steel deck hardware
- Stainless steel handles
- Side Boarding Gates- Port and Starboard



- Hydraulic Swim Ladder
- Davit at Transom
- Mooring Cleats at 1/3 of boat (2)
- Crew and Storage Room, Stern
- Port storage
- Sunpads and cushions with draining foam
- Teak Passarella cockpit floor and steps to side decks
- Telescopic-electro-hydraulic davit
- Two seater teak stern bench
- Canvas package

### Cockpit Helm

- Automatic pilot
- Navnet 3D interfaced chart plotter
- Barometer
- Furuno Radar/Plotter
- VHF Furuno
- Autopilot
- Furuno Depth, Speed and Compass
- Electronic controls for engine clutch and throttle with easy dock and auto troll functions
- Electric steering
- Carpet
- Helm seat
- Instant parallel battery
- Main electrical panel
- Side window with tilt opening
- Windshield wipers (2)

### Flybridge / Helm

- Access to cockpit through GRP and teak steps
- Furuno Depth, Speed and Compass
- Furuno Navnet
- Furuno radar antenna in radar arch
- Autopilot
- Fusion Radio/CD/MP3 system with amplifier
- Electrically controlled spotlight
- Furuno VHF
- Navnet 3D interfaced chart plotter Furuno Navpilot
- Cabinet with storage and sink
- Navigation lights
- Sofa with storage underneath
- Watertight loudspeakers (2)
- Rudder angle indicator

- Railing
- Stainless steel signal/flag mast
- Custom made Frigibar freezer underneath the port sofa next to the helm seat
- Icemaker in wet bar

### Electrical Equipment

- 80' white 50 amp shore cord
- Air Conditioning System 60,000 BTU
- Night time generator, 13.5 kw
- Battery Cut Offs for Appliances & Generator
- Battery 20KW Kohler Generator (241 hrs)
- 50A/240V Glenndinning Shore Cord Reeler
- 24V/240V Voltage Measuring System
- Battery disconnecting switches
- Breaker box
- TV SAT antenna cables in all cabins

### Mechanical Equipment

- 1,000 gal a day water watermaker
- Headhunter high pressure wash down pump with 3 hose connects (1) at bow, (1) at cockpit, and (1) at flybridge
- Motorized helm seat
- Single Racor Generator Filter
- 50A Fail Safe Galvanic Isolator
- Anti-Incendiary Fire-Boy System
- Deck Connection for Pumping Down Blackwater Tank
- Sea Water Chain for Forepeak Washing
- Shore Fresh Water Intake w/pressure regulator and gauge
- Side-Power Bow & Stern Thruster 10.7 HP
- Bilge pumps

### ADDITIONAL EQUIPMENT

- Seakeeper NG9 Gyro
- Furuno Nav Tech TX touch TZT14
- Reclining backrest for sun pads cushions
- Brownies Marine Compressor Yacht pro 45 Remote fill panel with flow control
- Vkoool anti-UV and Infrared control system in all windows
- Aqua Scan custom made tender

### Engine Room

- Twin MTU V8 2000 M94
- Access to cockpit through hatch and stainless steel and teak ladder

- Air intakes (2) with remote controlled shut off
- Change over valves (2) for emergency bilge water pumping
- Drainage for washer & dryer
- Electric bilge pump
- Electric self locking ventilation fan
- Fire extinguishing system with automatic/manual control
- Fuel tank level indicator
- Smoke detection alarm system for engine room
- Watertight forward bulkhead
- Wood flooring with non-slip surface
- Water filter for generator cooling system
- Fresh water outlet for filling & cooling
- Oil change pump for generators

### Safety Equipment

- Smoke detectors in each room / staterooms
- Smoke Detectors in Engine room (3)
- Life rafts (2): 4 & 6 person

## Исключения

---

При продаже яхты исключаются личные вещи владельца.

## Отказ от ответственности

---

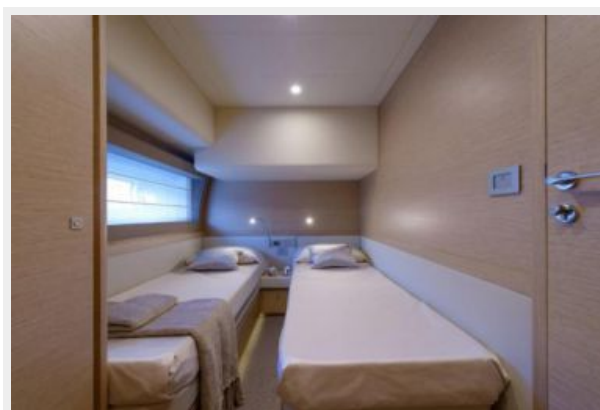
Компания предоставляет описание судна или яхты добросовестно, но не может гарантировать точность этой информации, а также не ручается за техническое состояние. Покупатель должен проинструктировать своих агентов или оценщиков исследовать представленную информацию более подробно, по собственному желанию. Продажа судна или яхты, изменение цены или снятие с продажи будет происходить без предварительного уведомления.

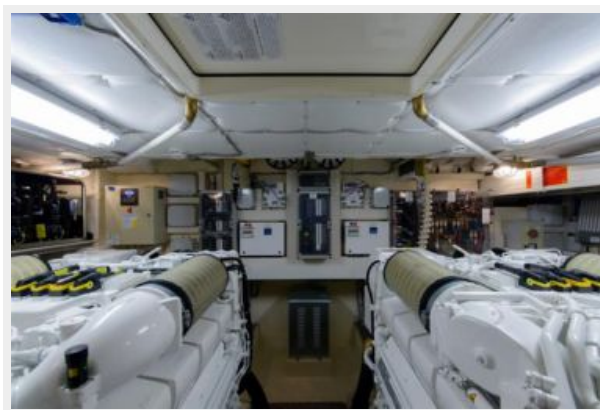
# ФОТОГРАФИИ

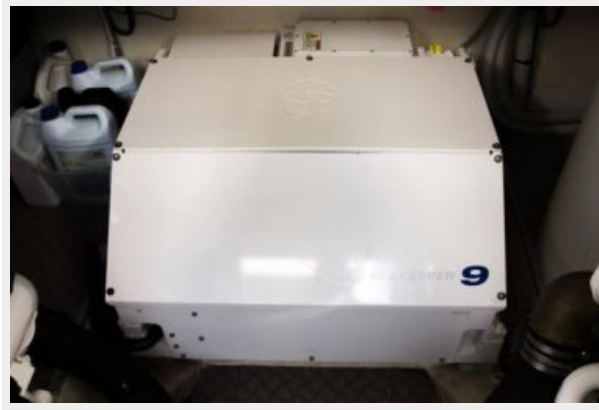














# КОНТАКТЫ

---

Андрей Шестаков (Andrey Shestakov) – ведущий яхтенный брокер отдела продаж яхт и судов компании Shestakov Yacht Sales Inc. Официальный представитель Shestakov Yacht Sales Inc. для русскоговорящих клиентов в центральном офисе компании в Майами/Форт Лодердейл/Флорида/США.

## Контактная информация

---

Email: [andrey@shestakovyachtsales.com](mailto:andrey@shestakovyachtsales.com)

Web: [shestakovyachtsales.com](http://shestakovyachtsales.com)

## Телефоны

---

Краснодарский край: **+7(918)465-66-44**

США, Майами, Флорида: **+1(954)274-4435**

## Время работы

---

Понедельник – Суббота: **9:00 - 21:00**  
EDT

Воскресенье: **Закрито**

## Адрес

---



Harbour Towne Marina, 850 NE 3rd St,  
STE 213, Dania, FL 33004