

WHISPER — C&C YACHTS



Builder: C&C YACHTS

Year Built: 1986

Model: Cruising Sailboat

Price: PRICE ON APPLICATION

Location: United States

LOA: 38' 0" (11.58m)

Beam: 12' 8" (3.86m)

Min Draft: 5' 0" (1.52m)

Max Draft: 7' 8" (2.34m)

Our experienced yacht broker, Andrey Shestakov, will help you choose and buy a yacht that best suits your needs **Whisper — C&C YACHTS** from our catalogue. Presently, at Shestakov Yacht Sales Inc., we have a wide variety of yachts available on our sale's list. We also work in close contact with all the big yacht manufacturers from all over the world.

If you would like to buy a yacht **Whisper — C&C YACHTS** or would like help answering any questions concerning purchasing, selling or chartering a yacht, please call **+1(954)274-4435**

TABLE OF CONTENTS

TABLE OF CONTENTS	2
SPECIFICATIONS	5
Overview	5
Basic Information	5
Dimensions	5
Speed, Capacities and Weight	5
Hull and Deck Information	6
Engine Information	6
DETAILED INFORMATION	7
C&C 38 "Whisper" Electronics	7
C&C 38 "Whisper" Galley	7
C&C 38 "Whisper" Sails and Rigging	7
C&C 38 "Whisper" Tankage	8
C&C 38 "Whisper" Miscellaneous	8
Exclusions	8
Disclaimer	9
PHOTOS	10
C&C 38 Mk III	10
C&C 38 Mk III	10
C&C 38 Mk III Dry-Sailed on Lift	10
C&C 38 Mk III Harken Carbo Headfoil	10
C&C 38 Mk III Bow View On Lift	10
C&C 38 Mk III Adjustable Jib Leads	11
C&C 38 Mk III Keel on Lift	11
C&C 38 Mk III Leather Wrapped Wheel	11
C&C 38 Mk III Starboard Cabin Top	11
C&C 38 Mk III Traveller and Mainsheet Controls	12
C&C 38 Mk III Vang and Mast Base	12

C&C 38 Mk III Bulkhead Mounted Wind & Compass	12
C&C 38 Mk III Self Tailing Primary Winches	12
C&C 38 Mk III Garmin, Compass, Autopilot	12
C&C 38 Mk III Navtec Hydraulic Backstay	12
C&C 38 Mk III Quarter Berth	13
C&C 38 Mk III Salon, Galley, & Quarter Berth	13
C&C 38 Mk III Quarter Berth	13
C&C 38 Mk III Salon	13
C&C 38 Mk III Salon Starbord Side	13
C&C 38 Mk III Salon Port Side Setee	13
C&C 38 Mk III Salon Starbord Side	14
C&C 38 Mk III Salon	14
C&C 38 Mk III Galley	14
C&C 38 Mk III Salon Chart Table	14
C&C 38 Mk III Head	14
C&C 38 Mk III Galley With Three Burner Stove	14
C&C 38 Mk III V-Berth	15
C&C 38 Mk III Head With Shower	15
C&C 38 Mk III Epirb	15
C&C 38 Mk III V-Berth	15
C&C 38 Mk III Yammarr	16
C&C 38 Mk III Sails	16
C&C 38 Mk III Sails	16
C&C 38 Mk III Spinnakers	16
CONTACTS	17
Contact details	17
Telephones	17
Office hours	17
Address	17

SPECIFICATIONS

Overview

How often do you get the chance to own a local legend? Well, here's your opportunity! The locally famous "Whisper" is now available to fill your trophy case. PHRF 114. Whisper isn't only fast she's luxurious, and loaded with all the conveniences of home. She comes fully equipped with custom made cushions, 3-burner stove/oven double sink, & top loading ice box. Sleeps 7, and has a head with a hand held shower.

There is a sail for just about any weather condition- three spinnakers three, racing headsails including an \$8,000 3DL used only a few times, and even a cruising headsail with roller furling. It's Like buying the sails and getting the boat for free! Her Yanmar 3 hp diesel "purrs like a sewing machine" and only burns about 3/4 gallon of fuel an hour.

This is a truly well-cared-for boat that will bring years of enjoyment to your life, whether you're a racer or a cruiser.

Basic Information

Category: Cruising Sailboat

Model Year: 1986

Year Built: 1986

Country: United States

Dimensions

LOA: 38' 0" (11.58m)

LWL: 31' 0" (9.45m)

LOD: 37' 6" (11.43m)

Beam: 12' 8" (3.86m)

Min Draft: 5' 0" (1.52m)

Max Draft: 7' 8" (2.34m)

Speed, Capacities and Weight

Displacement: 15600 Pounds

Water Capacity: 20 Gallons

Fuel Capacity: 20 Gallons

Hull and Deck Information

Hull Material: Fiberglass

Hull Configuration: Monohull

Engine Information

Engines: 1

Manufacturer: Yanmar

Engine Type: Inboard

Fuel Type: Diesel

DETAILED INFORMATION

C&C 38 "Whisper" Electronics

Raymarine ST 6000 Autopilot

Garmin Chartplotter

Raymarine Wind, depth, speed

Raymarine compass

Raymarine multiview at nav station

Raymarine VHF

EPIRB 406

Battery charger

Stereo AM/FM/CD

C&C 38 "Whisper" Galley

Three burner propane stove/oven

Large refrigerator

Saloon table (stored off boat)

C&C 38 "Whisper" Sails and Rigging

Harken Carbo Headfoil

Profurl roller furling - stored off boat

Rod standing rigging

Carbon spinnaker pole

Adjustable Jib tracks

North Dacron main 2011

North 3DL main 2008

Old delivery main

North 3DL #1

North #2

North #3

Three spinnakers - light and heavy reachers and a runner

Asymmetrical spinnaker with sock

Hydraulic backstay

Bimini

Dodger

60" Destroyer wheel

C&C 38 "Whisper" Tankage

Fuel 20 gal + 28 gal bladder

Water 20

Holding tank with Y valve

C&C 38 "Whisper" Miscellaneous

16000 BTU air conditioner

19,000 lb lift

Shore power inlet

Bottom paint is VC Underwater Epoxy, faired and buffed to race finish

Cushions stored off boat

Many spares

Exclusions

Owner's personal belongings.

Disclaimer

The Company offers the details of this vessel or yacht in good faith but cannot guarantee or warrant the accuracy of this information nor warrant the condition of the vessel. A buyer should instruct his representatives, agents, or his surveyors, to investigate such details as the buyer desires validated. This vessel or yacht is offered subject to prior sale, price change, or withdrawal without notice.

PHOTOS

C&C 38 Mk III



C&C 38 Mk III



C&C 38 Mk III Dry-Sailed on Lift



C&C 38 Mk III Harken Carbo Headfoil



C&C 38 Mk III Bow View On Lift



C&C 38 Mk III Adjustable Jib Leads



C&C 38 Mk III Keel on Lift



C&C 38 Mk III Leather Wrapped Wheel



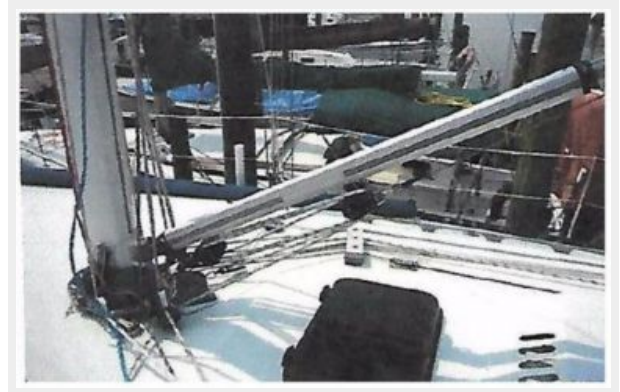
C&C 38 Mk III Starboard Cabin Top



C&C 38 Mk III Traveller and Mainsheet Controls



C&C 38 Mk III Vang and Mast Base



C&C 38 Mk III Self Tailing Primary Winches



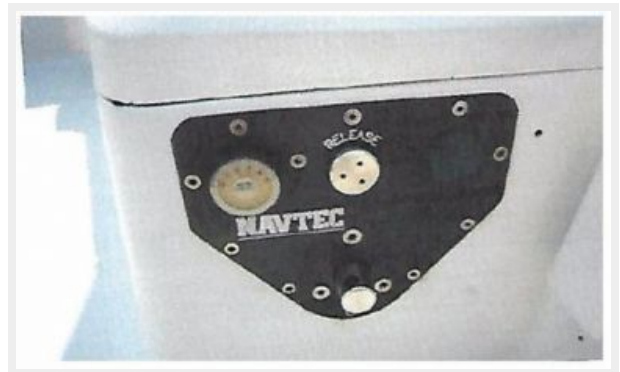
C&C 38 Mk III Bulkhead Mounted Wind & Compass



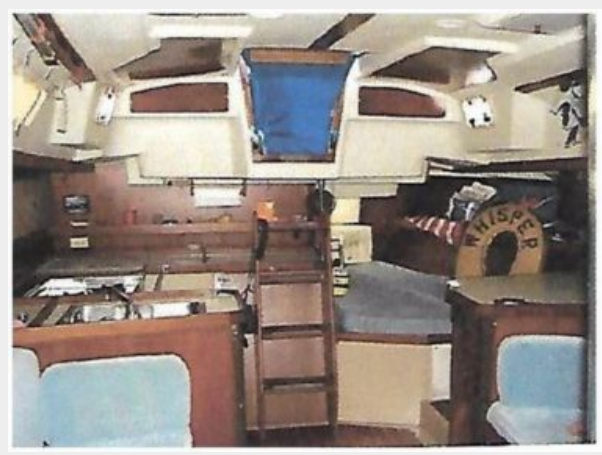
C&C 38 Mk III Garmin, Compass, Autopilot



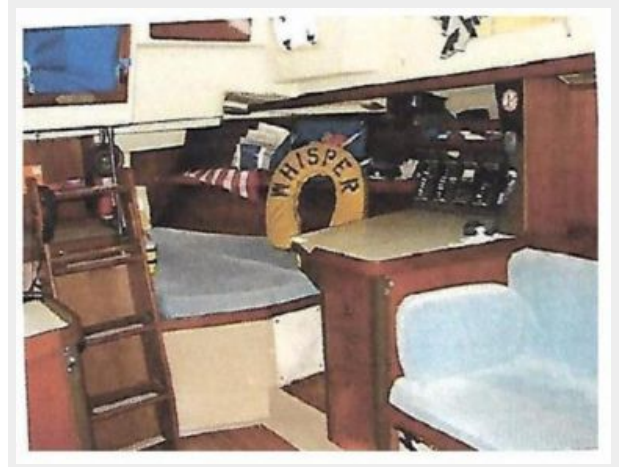
C&C 38 Mk III Navtec Hydraulic Backstay



C&C 38 Mk III Salon, Galley, & Quarter Berth



C&C 38 Mk III Quarter Berth



C&C 38 Mk III Quarter Berth



C&C 38 Mk III Salon



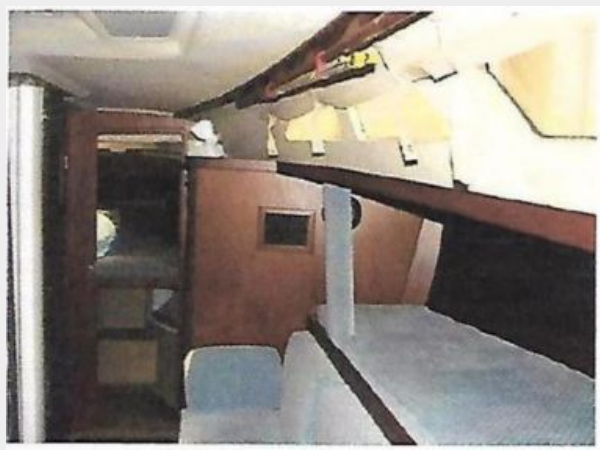
C&C 38 Mk III Salon Port Side Setee



C&C 38 Mk III Salon Starbord Side



C&C 38 Mk III Salon Starbord Side



C&C 38 Mk III Salon



C&C 38 Mk III Salon Chart Table



C&C 38 Mk III Galley



C&C 38 Mk III Galley With Three Burner Stove



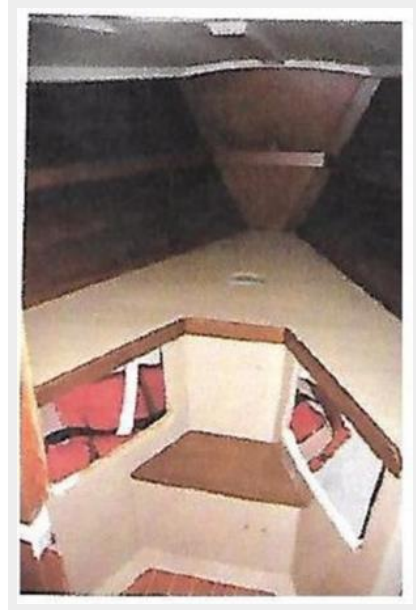
C&C 38 Mk III Head



C&C 38 Mk III Head With Shower



C&C 38 Mk III V-Berth



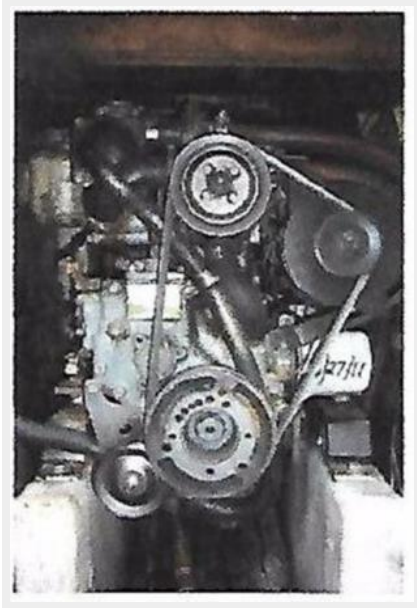
C&C 38 Mk III V-Berth



C&C 38 Mk III Epirb



C&C 38 Mk III Yammar



C&C 38 Mk III Sails



C&C 38 Mk III Sails



C&C 38 Mk III Spinnakers



CONTACTS

Andrey Shestakov, leading yacht broker of the sales department of Shestakov Yacht Sales Inc. Shestakov Yacht Sales Inc., the official representative of the Miami/Fort Lauderdale FL headquarters.

Contact details

Email: andrey@shestakovyachtsales.com

Web: shestakovyachtsales.com/en/

Telephones

USA: +1(954)274-4435

Office hours

Monday – Saturday: **9:00 - 21:00** EDT

Sunday: **closed**

Address



Harbour Towne Marina, 850 NE 3rd St,
STE 213, Dania, FL 33004