

55 PRESTIGE — PRESTIGE



Судостроитель: PRESTIGE

Модель: Моторная яхта

Длина общая: 55' (16.76m)

Макс. осадка: 3' 8" (1.12m)

Купить **55 Prestige — PRESTIGE** а также выбрать подходящую вам яхту из нашего **каталога яхт** вам поможет опытный яхтенный брокер Андрей Шестаков. На сегодняшний день компания **Shestakov Yacht Sales Inc.** имеет большое количество яхт в **собственном списке продаж**, а также тесно сотрудничает со всеми крупными **яхтенными производителями** по всему миру.

Для того чтобы купить яхту **55 Prestige — PRESTIGE** а также проконсультироваться по любому вопросу связанному с покупкой, продажей, чартером яхт позвоните по телефону **+7(918)465-66-44**.

ОГЛАВЛЕНИЕ

ОГЛАВЛЕНИЕ	2
ХАРАКТЕРИСТИКИ	5
Обзор	5
Основная информация	8
Размеры	8
Скорость, вместимость и масса	8
Размещение	8
Корпус и палуба	8
Информация о двигателе	9
ФОТОГРАФИИ	10
Transom	10
Foredeck Sunpad	10
Foredeck Sunpad with Sunshade	10
Cockpit	10
Cockpit Controls	11
Cockpit	11
Steps to Flybridge	11
Flybridge	11
Flybridge	12
Flybridge Wet Bar & Grill	12
Flybridge Wet Bar & Grill	12
Flybridge Sunlounge	12
Helm Station	12
Helm Station	12
Sunlounge Head Rests	13
Galley Aft	13
Galley	13
Galley	13

Salon	13
Glass & Bottle Storage	13
Salon	14
Salon	14
Companionway to Master Suite	14
Lower Helm Station	14
Master Stateroom	14
Master Stateroom	14
Master Stateroom	15
Master Settee	15
Master Settee	15
Master Stateroom - Aft View	15
Master Head	16
Master Head	16
Master Stall Shower	16
Master Walk-in Closet	16
Master Walk-in Closet	17
Washer/ Dryer Unit	17
VIP Stateroom	17
VIP Stateroom	17
Guest Head	18
VIP Stateroom - Aft View	18
Guest Head with Stall Shower	18
Guest Stateroom	18
Control Panel	19
Control Panel	19
Crew Quarters	19
Crew Quarters	19
Crew Quarters	20

Crew Head	20
Crew Head	20
Engine Room	20
Engine Room	21
Flybridge Layout	21
Salon Layout	21
Stateroom Layout	21
КОНТАКТЫ	22
Контактная информация	22
Телефоны	22
Время работы	22
Адрес	22

ХАРАКТЕРИСТИКИ

Обзор

Our almost-new turn-key 2016 550 Prestige Fly is a perfect example of their legendary model. Not only is it mint and loaded, but it's hull is an exquisite black which makes it even more stylish and sexy. The custom paint job was performed by Viking Yacht and cost more than \$40,000! With Zeus drives and three docking stations, it's as easy to dock as it is taking on a strong head sea. If you are searching for a quality late-model pre-owned boat that's hundreds of thousands of dollars less than a new one, you've found her! Plus, she still has ample warranty. Let's do it before someone else does! Trades happily considered. Accommodations

- (3) Stateroom / (2) head layout, plus crew quarters aft with head
- Grey Oak wood interior
- Choco Nubuck Devon Sofas
- Custom designer Elite decor package upgrade
- Separate entrance to full beam master suite
- Air conditioning - Tropical 84,000 BTU
- Vogue carpet throughout
- Washer/dryer combo
- Central vacuum system
- Electric heads

Highlights Include

- Custom black hull painted at the Viking Yachting Center
- 600 HP Cummins with Zeus pods
- 21.5kw Generator
- Bow thruster
- Retractable sun awning in cockpit
- Cockpit docking station
- Glendinning cablemaster
- Flybridge hardtop
- Hydraulic swim platform

Galley - Aft

- Aft galley serves the interior and cockpit
- VitriFrigo Refrigerator
- Vitroceraamic electric cooktop
- Dish washer

Salon

- The spacious salon boasts a 360° panoramic view
- Choco Nubuck Devon sofas
- Wrap-around salon seating
- Electric windows port & starboard
- Salon entry carpeting - Vogue
- 3-Panel sliding salon door
- Icemaker
- Electrical telescopic pedestal on dinette
- 32" Flatscreen TV
- SAT TV
- Wood flooring
- BOSE Speakers
- Blu-ray Player

Lower Helm Station

- Lower helm station with defroster
- (2) Windshield wipers
- Joystick system
- Engine electronic controls
- Windshield sun dodger forward
- (2) Raymarine E-125's

Master Stateroom - Full Beam, Aft

- Vogue carpeting at entrance & steps
- Accessed by a private stairway
- King-size island berth
- The suite features a large lateral window in the hull, bathing the room in natural light
- 40" Flatscreen TV
- BOSE Accoustimas 3" audio speakers
- Mattress battens
- Settee with table
- Adjoining head compartment, separate stall shower and walk-in closet
- Safe

VIP Stateroom - Forward

- Double berth that can be converted into two single berths
- Mattress battens
- 22" Flatscreen TV
- Private entry to guest head

Guest Stateroom - Port

- Two single side-by-side berths that can be converted into a double berth

Guest Head

- Dual entry
- Vanity with sink and mirror
- Separate stall shower

Deck

- Forward sun pad & cover
- Windlass with line & chain
- Trim tabs
- Dockside water
- Stainless steel bow protector
- Anchoring kit
- Foredeck bimini
- Fender racks

Cockpit

- Glendinning cablemaster
- Cockpit docking station
- Retractable sun awning
- Teak cockpit and swim platform
- Hydraulic swim platform
- High-gloss cockpit table
- Cockpit lounge bench seating
- Hot & cold transom shower
- Electric fresh & salt water wash down
- Access to crew quarters

Flybridge

- Hardtop upgrade
- Flybridge grill, cool box, sink & table
- Set of flybridge covers
- Flybridge seating area aft with high-gloss table
- Sun lounge with raised headrest conversion
- Double helm bench seating

Electronics & Navigation

Raymarine Electronics Package

- E-127 Multiscreen on flybridge
- (2) E-125's Lower helm

- GPS & 4kw Dome Radar
- 260E-VHF Dual stations
- Raymarine A/S 650 receiver

Mechanical

- Battery charger
- 24-115V-2000V Inverter
- Holding tank, total 55 gallons

Основная информация

Тип судна: Моторная яхта

Подкатегория: Flybridge

Модельный год: 2015

Размеры

Длина общая: 55' (16.76mm)

Макс. осадка: 3' 8" (1.12mm)

Скорость, вместимость и масса

Вместимость воды: 211 Gallons

Объем топливного бака: 581 Gal
Gallons

Размещение

Всего кают: 3

Всего ком. состава: 2

Корпус и палуба

Материал корпуса: Fiberglass

Информация о двигателе

Двигатели: 2

Производитель: Cummins

Тип топлива: Diesel

ФОТОГРАФИИ

Transom



Foredeck Sunpad



Foredeck Sunpad with Sunshade



Cockpit



Cockpit Controls



Cockpit



Steps to Flybridge



Flybridge



Flybridge



Flybridge Wet Bar & Grill



Flybridge Wet Bar & Grill



Flybridge Sunlounge



Helm Station



Helm Station



Sunlounge Head Rests



Galley Aft



Galley



Galley



Glass & Bottle Storage



Salon



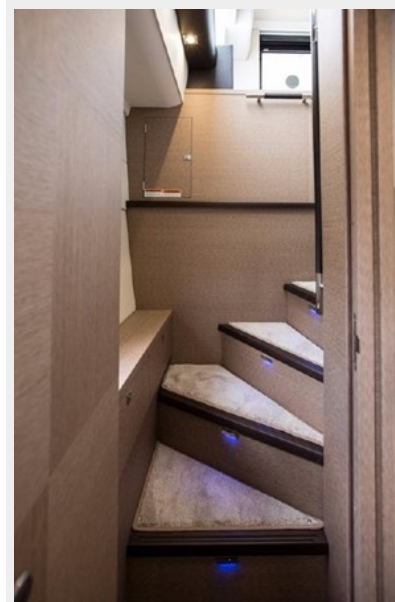
Salon



Salon



Companionway to Master Suite



Lower Helm Station



Master Stateroom



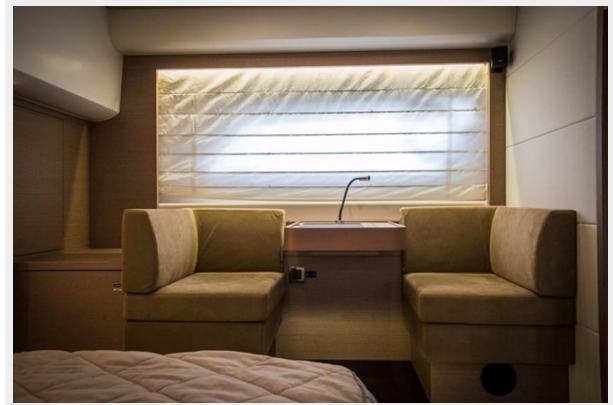
Master Stateroom



Master Stateroom



Master Settee



Master Settee



Master Stateroom - Aft View



Master Head



Master Head



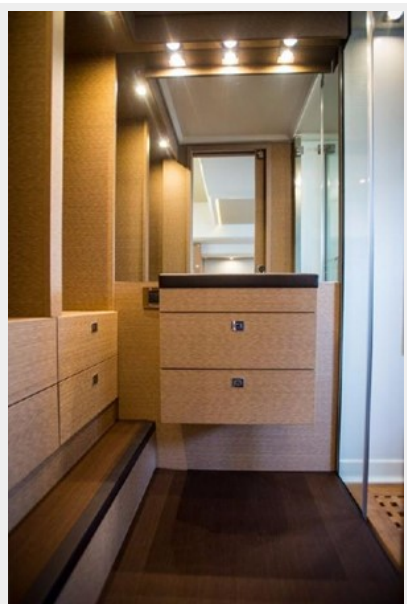
Master Stall Shower



Master Walk-in Closet



Master Walk-in Closet



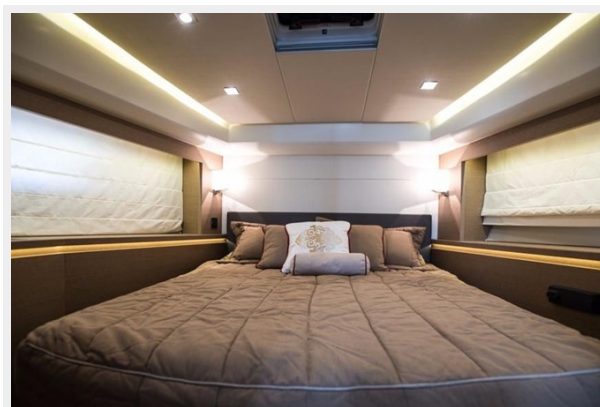
Washer/ Dryer Unit



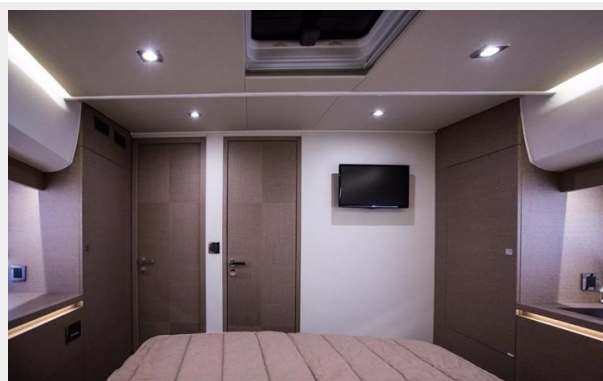
VIP Stateroom



VIP Stateroom



VIP Stateroom - Aft View



Guest Head



Guest Head with Stall Shower



Guest Stateroom



Control Panel



Control Panel



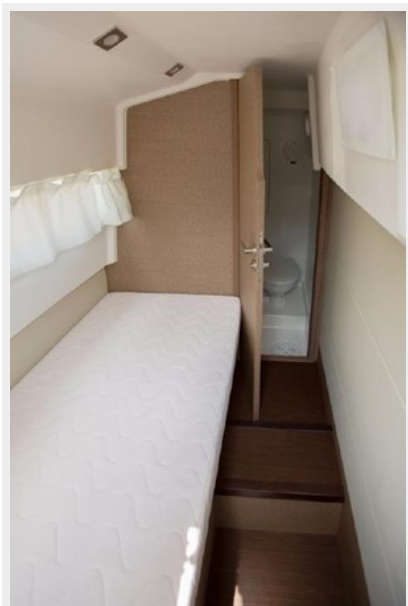
Crew Quarters



Crew Quarters



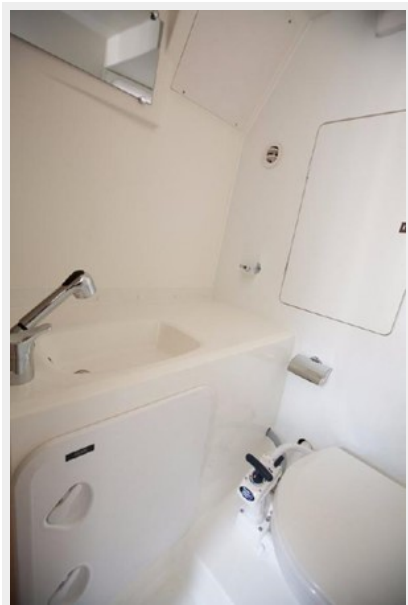
Crew Quarters



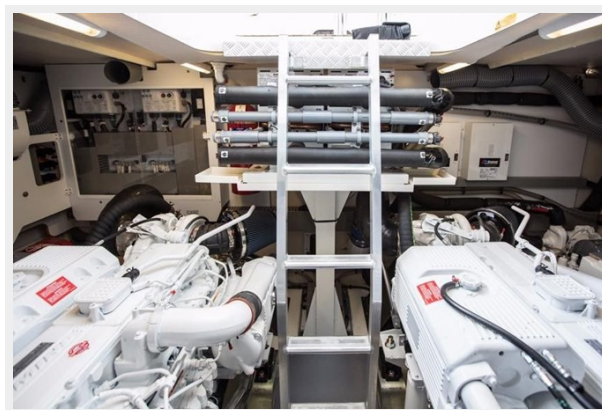
Crew Head



Crew Head



Engine Room



Engine Room



Flybridge Layout



Salon Layout



Stateroom Layout



КОНТАКТЫ

Андрей Шестаков (Andrey Shestakov) – ведущий яхтенный брокер отдела продаж яхт и судов компании Shestakov Yacht Sales Inc. Официальный представитель Shestakov Yacht Sales Inc. для русскоговорящих клиентов в центральном офисе компании в Майами/Форт Лодердейл/Флорида/США.

Контактная информация

Email: **andrey@shestakovyachtsales.com**

Web: shestakovyachtsales.com

Телефоны

Краснодарский край: **+7(918)465-66-44**

США, Майами, Флорида: **+1(954)274-4435**

Время работы

Понедельник – Суббота: **9:00 - 21:00** EDT

Воскресенье: **Закрыто**

Адрес



Harbour Towne Marina, 850 NE 3rd St, STE 213, Dania, FL 33004