

HULLABALOO — OCEAN ALEXANDER



Судостроитель: OCEAN ALEXANDER

Год постройки: 2000

Модель: Моторная яхта

Цена: **ЦЕНА ЯХТЫ ПО ЗАПРОСУ**

Местонахождение: United States

Длина общая: 45' 6" (13.87m)

Ширина: 15' 8" (4.78m)

Макс. осадка: 3' 0" (0.91m)

Крейс. скорость: 12 Kts. (14 MPH)

Макс. скорость: 18 Kts. (21 MPH)

Купить Hullabaloo — OCEAN ALEXANDER а также выбрать подходящую вам яхту из нашего каталога яхт вам поможет опытный яхтенный брокер Андрей Шестаков. На сегодняшний день компания Shestakov Yacht Sales Inc. имеет большое количество яхт в собственном списке продаж, а также тесно сотрудничает со всеми крупными яхтенными производителями по всему миру.

Для того чтобы купить яхту Hullabaloo — OCEAN ALEXANDER а также проконсультироваться по любому вопросу связанному с покупкой, продажей, чартером яхт позвоните по телефону **+7(918)465-66-44**.

ОГЛАВЛЕНИЕ

ОГЛАВЛЕНИЕ	2
ХАРАКТЕРИСТИКИ	8
Обзор	8
Основная информация	8
Размеры	8
Скорость, вместимость и масса	9
Размещение	9
Корпус и палуба	9
Информация о двигателе	9
ПОДРОБНОЕ ОПИСАНИЕ	10
Deck	10
Fly Bridge	10
Salon	10
Galley	11
Master Stateroom	11
Forward Stateroom	11
Forward Head	12
Engine Room	12
Electronics	12
Electronics 2	13
Hull and Decks	13
Cockpit	14
Fly Bridge	14
Electrical Equipment	14
Miscellaneous	15
Dinghy	15
Исключения	15
Отказ от ответственности	15

ФОТОГРАФИИ	16
Flybridge helm.JPG	16
profile 3.jpg	16
Flybridge helm seating.JPG	16
Flybridge lounge.JPG	16
Flybridge TV.JPG	16
Flybridge helm electronics.JPG	16
Flybridge helm gauges.JPG	17
Flybridge helm electronics (2).JPG	17
Salon lounge and dinette.JPG	17
Salon entertainment center.JPG	17
Salon TV.JPG	17
Galley.JPG	17
Galley cooktop.JPG	18
Galley microwave.JPG	18
Galley serving bar.JPG	18
Galley floor.JPG	18
Lower helm station.JPG	18
Lower helm.JPG	18
Lower helm wheel.JPG	19
Lower helm gauges.JPG	19
Lower helm controls.JPG	19
Master stateroom stairwell.JPG	19
Master stateroom berth.JPG	19
Master stateroom starboard side.JPG	19
Master stateroom port side.JPG	20
Master stateroom work station.JPG	20
Master stateroom head.JPG	20
Master stateroom head (2).JPG	20

Master stateroom shower stall.JPG	20
Master stateroom stairwell engine access (2).JPG	20
Master stateroom stairwell engine access.JPG	21
Day head.JPG	21
Day head (2).JPG	21
Day head countertop.JPG	21
Day head shower.JPG	21
Vacuflush day head.JPG	21
Port side VIP berth.JPG	22
Starboard side VIP berth.JPG	22
Breaker panel.JPG	22
Breaker panel (2).JPG	22
Washer dryer combo unit.JPG	22
Bow deck hatch.JPG	22
Bow pulpit.JPG	23
Bow.JPG	23
Brow.JPG	23
Ocean Alexander.JPG	23
Port companionway forward.JPG	23
Port Companionway.JPG	23
Radar mast.JPG	24
Starboard companionway.JPG	24
Starboard companionway forward.JPG	24
Aft deck.JPG	24
Engine room access.JPG	24
Engine room access ladder.JPG	24
Engine room aft.JPG	25
Port engine.JPG	25
Port side engine room.JPG	25

Starboard side engine room.JPG	25
Starboard engine.JPG	25
Tender and Davit.JPG	25
Transom shore power and water.JPG	26
Transom and swim platform.JPG	26
Port quarter.JPG	26
Flybridge lounge.JPG	26
Flybridge helm.JPG	26
Flybridge helm electronics (2).JPG	26
Flybridge helm gauges.JPG	27
Flybridge TV.JPG	27
Flybridge helm seating.JPG	27
Flybridge helm electronics.JPG	27
Salon lounge and dinette.JPG	27
Salon entertainment center.JPG	27
Salon TV.JPG	28
Galley.JPG	28
Galley cooktop.JPG	28
Galley microwave.JPG	28
Galley serving bar.JPG	28
Galley floor.JPG	28
Lower helm station.JPG	29
Lower helm.JPG	29
Lower helm wheel.JPG	29
Lower helm gauges.JPG	29
Lower helm controls.JPG	29
Master stateroom starboard side.JPG	29
Master stateroom stairwell.JPG	30
Master stateroom work station.JPG	30

Master stateroom head.JPG	30
Master stateroom head (2).JPG	30
Master stateroom shower stall.JPG	30
Day head.JPG	30
Salon TV.JPG	31
Salon lounge and dinette.JPG	31
Salon entertainment center.JPG	31
Flybridge lounge.JPG	31
Flybridge helm gauges.JPG	31
Flybridge TV.JPG	31
Flybridge helm electronics.JPG	32
Flybridge helm seating.JPG	32
Flybridge helm electronics (2).JPG	32
Flybridge helm.JPG	32
Galley.JPG	32
Day head countertop.JPG	32
Day head (2).JPG	33
profile 3.jpg	33
Lower helm controls.JPG	33
Breaker panel.JPG	33
Breaker panel (2).JPG	33
Aft deck.JPG	33
Bow.JPG	34
Bow pulpit.JPG	34
Brow.JPG	34
Flybridge lounge.JPG	34
Port engine.JPG	34
Vacuflush day head.JPG	34
Master stateroom head (2).JPG	35

Bow deck hatch.JPG	35
Starboard side VIP berth.JPG	35
Transom shore power and water.JPG	35
Port quarter.JPG	35
Lower helm.JPG	35
Salon TV.JPG	36
profile 3.jpg	36
Master stateroom port side.JPG	36
Bow deck hatch.JPG	36
Aft deck.JPG	36
Flybridge TV.JPG	36
Master stateroom stairwell engine access.JPG	37
Master stateroom head (2).JPG	37
Master stateroom head.JPG	37
Master stateroom starboard side.JPG	37
Flybridge helm seating.JPG	37
Master stateroom stairwell.JPG	37
Radar mast.JPG	38
Starboard side VIP berth.JPG	38
Washer dryer combo unit.JPG	38
Port engine.JPG	38
Port quarter.JPG	38
Engine room access.JPG	38
Breaker panel.JPG	39
КОНТАКТЫ	40
Контактная информация	40
Телефоны	40
Время работы	40
Адрес	40

ХАРАКТЕРИСТИКИ

Обзор

If you've been looking for a bluewater-capable coastal cruiser, Great Loop boat or just a weekend floating condo, look no further than Hullabaloo. She is one of the most well-equipped vessels that I have listed in a long time. She literally has all the right stuff, including over-sized stabilizers, custom hardtop with bridge AC, new bow thruster, Cat power, inverter, washer/dryer, Novurania 11 dinghy, Marquipt davit, fresh hullside paint (2016), complete Cat engine services, the works.

There are a lot of attributes to consider with this 456. At a cruise of 8 knots, she achieves 1.5 mpg which equates to just over 5 gallons per hour. Run her up to 15 knots and you are only burning approximately 26 gph. A custom hardtop was added in late 2011 and air-conditioning was installed in the flybridge. Wesmar active-fin stabilizers were installed and oversized 6.5' square foot fins were specified in lieu of the more typical 4.0' fins to provide a rock solid platform while underway. A 3kW true sign wavemarine inverter was installed to provide 120V electricity while underway or at anchor without having to run the Northern Lights generator. A second blackwater tank was added bringing total holding capacity to approximately 100 gallons, more than double what you will find on sister-ship models.

Hullabaloo would be an excellent Great Loop boat in that she has a modest draft and minimum bridge clearance of 18'10" to the anchor light. This height could be easily reduced if desired by hinging a few specific components up on the mast.

Hullabaloo represents a great opportunity to own a well-cared-for, turn-key motoryacht. Put her at the top of your list.

Основная информация

Тип судна: Моторная яхта	Подкатегория: Flybridge
Модельный год: 2000	Год постройки: 2000
Страна: United States	Открытая палуба мостика: Да

Размеры

Длина общая: 45' 6" (13.87m)	Ширина: 15' 8" (4.78m)
Макс. осадка: 3' 0" (0.91m)	Трапы: 18' 10" (5.74m)

Скорость, вместимость и масса

Крейс. скорость: 12 Kts. (14 MPH)

Макс. скорость: 18 Kts. (21 MPH)

Вместимость воды: 250 Gallons

Вместимость сточного бака: 100 Gallons

Объем топливного бака: 550 Gallons

Размещение

Всего кают: 2

Всего коек: 3

Спальные места: 5

Корпус и палуба

Материал корпуса: Fiberglass

Материал палубы: Fiberglass

Цвет корпуса: Blue

Информация о двигателе

Производитель: Caterpillar

Модель: 3126TA

Тип двигателя: Inboard

Тип топлива: Diesel

ПОДРОБНОЕ ОПИСАНИЕ

Deck

The main deck provides full walk-around access while the stainless and teak rails ensure a secure handhold at all times. Midship folding gates allow easy access when tied up alongside a dock. Hullabaloo is equipped with two main anchors, the port being secured with stainless chain. A 3/8" all chain rode of 300 in length and a 150 nylon rode are managed with a Maxwell 1200 electric windlass.

The aft deck/cockpit area features teak planking for secure footing even when wet. A generously sized and easily accessed lazarette provides a logical place to store lines, fenders, mooring gear, etc. A Marquipt electric winch davit makes launching & recovering the 11' Novurania straightforward and simple.

Transom-mounted davit arms can be used to secure a sea kayak, a light rowing tender or similarly lightweight craft. Hullabaloo has a generously sized swim platform to facilitate diving from, boarding a tender and just generally easy access into & out of the water for swimmers. There is a retractable swim ladder under the port side of the swim stem.

Fly Bridge

The flybridge features a custom hardtop with overhead lighting and air-conditioning that was installed in 2011. The entire flybridge is enclosed with clear acrylic paneling. Multiple zippers & ceiling snaps allow for a variety of ventilation options when desired, otherwise the AC unit can keep it cool & dry regardless of outside conditions. Plenty of storage is located under the fixed L-settee as well as under the forward dash. There are two swiveling helm chairs.

Engine control is by means of cable actuated shifter levers. The helm features a Raymarine RL80C radar display, a Standard Horizon GPS Chart CP 500 display, Raymarine ST60 multi display and Raymarine ST 6000+ autopilot head unit. Floscan displays provide RPM and real time fuel burn data. A Clarion head unit runs the flybridge audio system. There's a Standard Horizon VHF unit as well as separate Horizon Ram Mic next to the helm.

Salon

The salon on the 456 Classico is amidship and well lit thanks to windows on all four sides. Access is gained through either port or starboard sliding doors. There is seating for six adults at the settee with additional seating options provided by the owner. An icemaker as well as a refrigerator complements the full-sized marine refrigerator in the galley. A complete audio/video system is installed to include a flat panel TV. A Splendide combo washer/dryer is located in the port side cabinet which can run off of the generator as well as shore power.

The lower helm station sits forward on the starboard side with a full complement of engine controls, electronics and various display panels. Hullabaloo features a Tank Tender monitor that reads the fuel tank levels.

A light cream colored custom cut carpet contrasts nicely with the varnished teak interior as well as providing a soft texture underfoot. The carpeting further minimizes environmental noise in the salon from the engine room which is heavily insulated with soundproofing.

Galley

The galley is forward of the main salon but not separate which is great for the acting cook. As opposed to some designs where the galley is a completely separate space, Hullabaloo's galley shares the common salon space so the cook doesn't feel isolated while preparing meals. The serving bar is perfect for serving up everything from hors d'oeuvres to full buffet-style meals. The galley floor and countertops are finished in a rich black galaxy granite. Appliances include a Kenyon 3-burner electric cook top, a GE microwave/convection oven and a Dometic refrigerator/freezer (new 2016). The galley sink is an under counter double basin with telescoping Franke faucet head.

There is a unique storage area under the galley sole which is perfect for larger provisions i.e. packages of paper towel, toilet paper, bottled water, etc.

Master Stateroom

Hullabaloo features a full-beam aft master stateroom. The tapered queen island berth is situated on centerline with abundant counter surface and storage cabinets encircling. Under the bed are three pullout drawers. A forward double door locker is ideal for hanging clothing. The cabin has windows on three sides plus an overhead hatch so ambient lighting is plentiful. Off to starboard a swivel stool tucks neatly out of the way under the built in desk when not needed. The separate shower and head/sink rooms are located outboard and forward on each side so that one can shower independently of someone utilizing the head, a nicely thought out convenience. The master head has a Vacuflush toilet as well.

Forward Stateroom

The forward cabin is a classic v-berth configuration with a center filler cushion stored under the mattress. One of the benefits of this layout is that it puts the guests at the opposite end of the boat from the master stateroom providing for maximum privacy to all onboard. A hanging locker is off to the port side of the cabin and there are numerous built in drawers and cabinets under the mattress. The split chain locker is accessed through the forward bulkhead door.

Forward Head

The forward head, located off to starboard just before entering the v-berth, features a Vacuflush toilet, black galaxy granite flooring and counter surface and a separate shower stall. With smooth gel coated surfaces throughout, this space is easy to keep clean and dry.

Engine Room

- Twin Caterpillar 3126 TA 420hp (1000 hr service completed)
- Twin Disc transmissions 2.47/1 ratio
- Large seawater intake strainers
- Racor 1,000FG filters for each main engine
- Algae-X system in-line with main engines fuel supply
- Northern Lights 12kw Generator 120V/240V AC
- Racor fuel/water separator for genset
- Gas/water separator for generator exhaust to minimize discharge noise
- Pre-plumbed engine & generator oil/transmission oil evacuation/fill system
- Overhead AC/DC lighting
- Exhaust blowers
- Raritan hot water heater, both 120AC & engine heat
- Wesmar 6.5' active fin stabilizers, oversized to maximize stability
- Marine AGM batteries
- Emergency start/service parallel battery switch
- Bonded electrical system
- Cruisair reverse cycle heating/air-conditioning units
- Xantrex 3kW True Sine Wave inverter
- Xantrex 40amp battery charger

Electronics

FLYBRIDGE

- Raymarine RL80C radar display
- Standard Horizon GPS Chart CP 500 display
- Raymarine ST60 multi display
- Raymarine ST 6000+ autopilot head unit
- Floscan engine fuel burn monitors

LOWER HELM

- Standard Horizon CP1000C Chart Plotter
- Raymarine ST 6000+ autopilot head unit
- Raymarine wind indicator display

- Raymarine ST60 multi display

ADDITIONAL ELECTRONICS

- Raystar 112LP GPS Transducer
- Raystar 120 GPS Receiver
- KVH “TracVision 4” satellite receiver for Direct TV

Electronics 2

- Raytheon ST 6000+ autopilot (Pilothouse)
- Raytheon ST 60 Tri Data speed, depth, temp (Pilothouse)
- Raytheon Pathfinder RL 70C radar/chart plotter (Pilothouse)
- Standard Horizon Spectrum VHF
- Raytheon ST 6000+ autopilot (Flybridge)
- Raytheon ST 60 Tri Data speed, depth, temp (Flybridge)
- Raytheon Pathfinder RL 70C remote radar/plotter (Flybridge)
- Standard Horizon remote mic lower VHF (Flybridge)
- 4” Danforth Constellation compass
- Remote VHF speaker

Hull and Decks

- Flag Blue hull w/white boot stripe (2016)
- White superstructure w/flag blue feature stripes on bridge side
- Dark tinted windows
- Fiberglass non-skid deck
- Bow pulpit with dual anchor rollers
- Danforth 35 lb. anchor mounted
- Stainless steel CQR 45 lb. anchor mounted
- Maxwell 1200 electric windlass w/chain gypsy & rope capstan
- Maxwell on deck foot switches for windlass
- (3) Windshield wipers & washers
- Dual Kahlenburg air horns
- Textulene dark blue windshield cover
- Stainless steel bow rail w/varnished teak hand rail
- 8” x 18” port lights
- Easy access walk around side decks
- Powder coated exterior hand rails on house side
- Screens on all opening windows
- Deck lighting
- White rub rail
- White aluminum window trim

- Sliding entry doors port and starboard into Salon
- Varnished teak flybridge bow rail
- Port & starboard rail gates w/step pads
- International navigation lights

Cockpit

- Fiberglass swim platform
- Stainless steel swim ladder stows under platform
- Fender racks for (2) fenders on aft deck
- Lazarette access with gas shock assist
- Bennett trim tabs
- Teak sole
- Fresh water wash down
- Shore side water inlet
- Cable TV inlet
- Ensign staff w/cover
- Fluorescent & incandescent lighting in Lazarette

Fly Bridge

- Novurania 335 11' tender w/Yamaha 30 hp
- Marquipt electric dinghy davit
- Hinged mast w/reinforcement for future boom
- Upholstered flybridge helm seat
- Sunbrella navy blue helm cover
- Tinted windscreen w/stainless steel rail
- (2) Hand rails
- Flybridge stereo speakers
- 110V GFCI outlet at helm
- Fiberglass non skid deck
- Chart locker
- L shaped Flybridge seating w/storage below
- Deck lighting
- Stainless steel rail around boat deck
- Three step teak & stainless ladder boat deck to Flybridge
- Marquipt tender chocks

Electrical Equipment

- Upgraded Northern Lights 12 kW generator w/sound shield
- 50 amp shore power inlet on starboard side midship
- 50 amp shore power inlet on Aft Deck
- Battery parallel system
- (3) Guest battery shut off switches
- DC volt meter at panel
- DC amp meter at panel
- (1) 220V volt meter at panel
- (2) 110V volt meters at panel
- (2) 110V amp meters at panel
- (1) 220V amp meter at panel
- DC outlet at flybridge helm
- NewMar 30 amp battery charger
- (3) 8D batteries in fiberglass battery boxes
- Inverter system for icemaker & 110V outlet at helm

Miscellaneous

- Wave WiFi extender- Rogue Pro (2016)
- Sirius Bluetooth stereo, amp and speakers (2016)
- Spectra Newport 700 water maker
- Flybridge mast hinged to reduce air draft

Dinghy

Novurania 11' RIB with Mercury 30 HP outboard

Исключения

При продаже яхты исключаются личные вещи владельца.

Отказ от ответственности

Компания предоставляет описание судна или яхты добросовестно, но не может гарантировать точность этой информации, а также не ручается за техническое состояние. Покупатель должен проинструктировать своих агентов или оценщиков исследовать представленную информацию более подробно, по собственному желанию. Продажа судна или яхты, изменение цены или снятие с продажи будет происходить без предварительного уведомления.

ФОТОГРАФИИ

profile 3.jpg



Flybridge helm.JPG



Flybridge helm seating.JPG



Flybridge lounge.JPG



Flybridge TV.JPG



Flybridge helm electronics.JPG



Flybridge helm gauges.JPG



Flybridge helm electronics (2).JPG



Salon lounge and dinette.JPG



Salon entertainment center.JPG



Salon TV.JPG



Galley.JPG



Galley cooktop.JPG



Galley microwave.JPG



Galley serving bar.JPG



Galley floor.JPG



Lower helm station.JPG



Lower helm.JPG



Lower helm wheel.JPG



Lower helm gauges.JPG



Lower helm controls.JPG



Master stateroom stairwell.JPG



Master stateroom berth.JPG



Master stateroom starboard side.JPG



Master stateroom port side.JPG



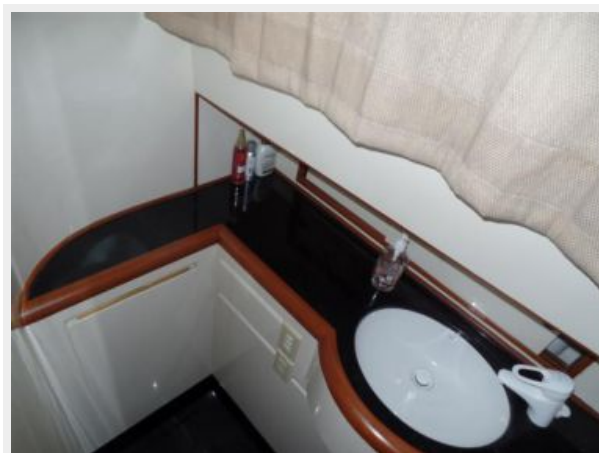
Master stateroom work station.JPG



Master stateroom head.JPG



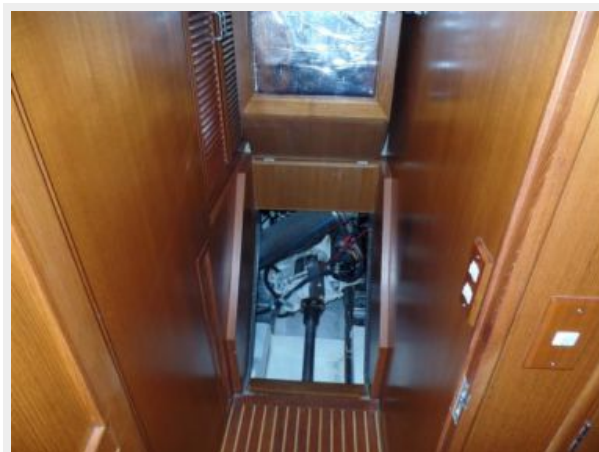
Master stateroom head (2).JPG



Master stateroom shower stall.JPG



Master stateroom stairwell engine access (2).JPG



Master stateroom stairwell engine access.JPG



Day head.JPG



Day head (2).JPG



Day head countertop.JPG



Day head shower.JPG



Vacuflush day head.JPG



Bow pulpit.JPG



Bow.JPG



Brow.JPG



Ocean Alexander.JPG



Port companionway forward.JPG



Port Companionway.JPG



Radar mast.JPG



Starboard companionway.JPG



Starboard companionway forward.JPG



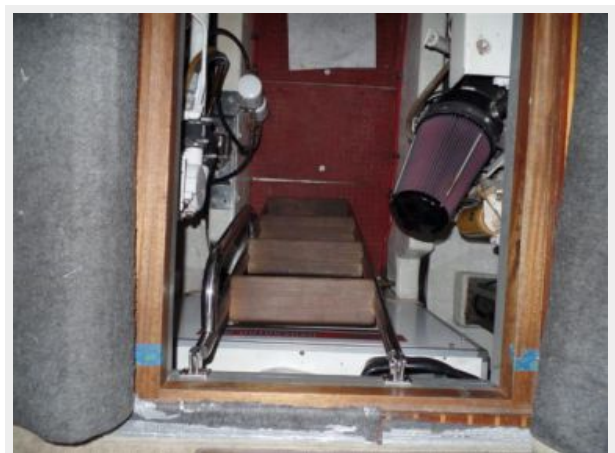
Aft deck.JPG



Engine room access.JPG



Engine room access ladder.JPG



Engine room aft.JPG



Port engine.JPG



Port side engine room.JPG



Starboard side engine room.JPG



Starboard engine.JPG



Tender and Davit.JPG



Transom shore power and water.JPG



Transom and swim platform.JPG



Port quarter.JPG



Flybridge lounge.JPG



Flybridge helm.JPG



Flybridge helm electronics (2).JPG



Flybridge helm gauges.JPG



Flybridge TV.JPG



Flybridge helm seating.JPG



Flybridge helm electronics.JPG



Salon lounge and dinette.JPG



Salon entertainment center.JPG



Salon TV.JPG



Galley.JPG



Galley cooktop.JPG



Galley microwave.JPG



Galley serving bar.JPG



Galley floor.JPG



Lower helm station.JPG



Lower helm.JPG



Lower helm wheel.JPG



Lower helm gauges.JPG



Lower helm controls.JPG



Master stateroom starboard side.JPG



Master stateroom stairwell.JPG



Master stateroom work station.JPG



Master stateroom head.JPG



Master stateroom head (2).JPG



Master stateroom shower stall.JPG



Day head.JPG



Salon TV.JPG



Salon lounge and dinette.JPG



Salon entertainment center.JPG



Flybridge lounge.JPG



Flybridge helm gauges.JPG



Flybridge TV.JPG



Flybridge helm electronics.JPG



Flybridge helm seating.JPG



Flybridge helm electronics (2).JPG



Flybridge helm.JPG



Galley.JPG



Day head countertop.JPG



Day head (2).JPG



profile 3.jpg



Lower helm controls.JPG



Breaker panel.JPG



Breaker panel (2).JPG



Aft deck.JPG



Bow.JPG



Bow pulpit.JPG



Brow.JPG



Flybridge lounge.JPG



Port engine.JPG



Vacuflush day head.JPG



Master stateroom head (2).JPG



Bow deck hatch.JPG



Starboard side VIP berth.JPG



Transom shore power and water.JPG



Port quarter.JPG



Lower helm.JPG



profile 3.jpg



Salon TV.JPG



Master stateroom port side.JPG



Bow deck hatch.JPG



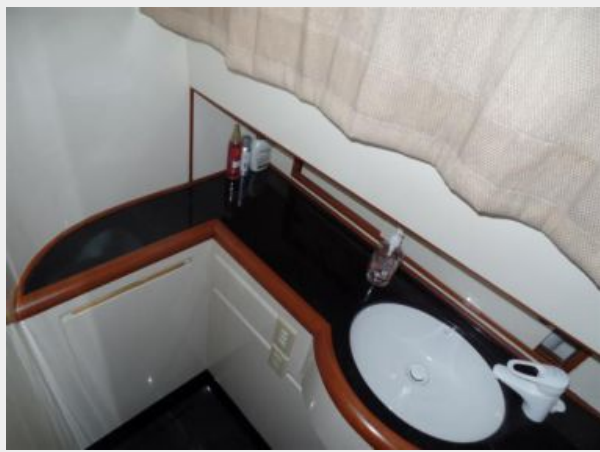
Aft deck.JPG



Flybridge TV.JPG



Master stateroom head (2).JPG



Master stateroom stairwell engine access.JPG



Master stateroom head.JPG



Master stateroom starboard side.JPG



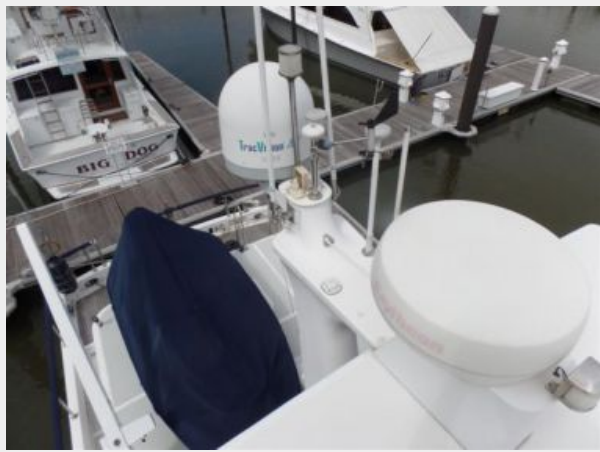
Flybridge helm seating.JPG



Master stateroom stairwell.JPG



Radar mast.JPG



Starboard side VIP berth.JPG



Washer dryer combo unit.JPG



Port engine.JPG



Port quarter.JPG



Engine room access.JPG



КОНТАКТЫ

Андрей Шестаков (Andrey Shestakov) – ведущий яхтенный брокер отдела продаж яхт и судов компании Shestakov Yacht Sales Inc. Официальный представитель Shestakov Yacht Sales Inc. для русскоговорящих клиентов в центральном офисе компании в Майами/Форт Лодердейл/Флорида/США.

Контактная информация

Email: andrey@shestakovyachtsales.com

Web: shestakovyachtsales.com

Телефоны

Краснодарский край: **+7(918)465-66-44**

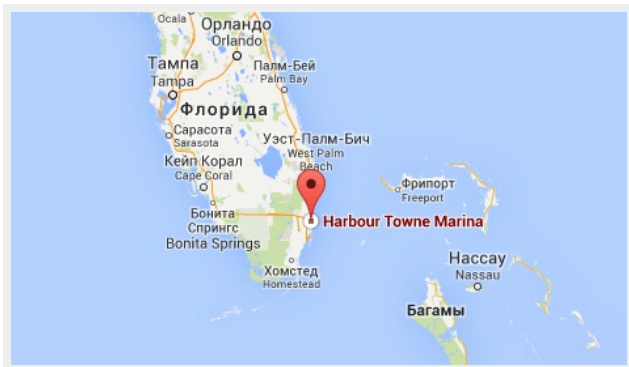
США, Майами, Флорида: **+1(954)274-4435**

Время работы

Понедельник – Суббота: **9:00 - 21:00**
EDT

Воскресенье: **Закрето**

Адрес



Harbour Towne Marina, 850 NE 3rd St,
STE 213, Dania, FL 33004