

LIQUID ENCOURAGEMENT — TIARA



Судостроитель: TIARA

Год постройки: 1999

Модель: Крейсер

Цена: **ЦЕНА ЯХТЫ ПО ЗАПРОСУ**

Местонахождение: United States

Длина общая: 35' 0" (10.67m)

Ширина: 13' 3" (4.04m)

Мин. осадка: 3' 3" (0.99m)

Крейс. скорость: 23 Kts. (26 MPH)

Макс. скорость: 32 Kts. (37 MPH)

Купить **Liquid Encouragement — TIARA** а также выбрать подходящую вам яхту из нашего каталога яхт вам поможет опытный яхтенный брокер Андрей Шестаков. На сегодняшний день компания **Shestakov Yacht Sales Inc.** имеет большое количество яхт в собственном списке продаж, а также тесно сотрудничает со всеми крупными яхтенными производителями по всему миру.

Для того чтобы купить яхту **Liquid Encouragement — TIARA** а также проконсультироваться по любому вопросу связанному с покупкой, продажей, чартером яхт позвоните по телефону **+7(918)465-66-44**.

ОГЛАВЛЕНИЕ

| | |
|--|----|
| ОГЛАВЛЕНИЕ | 2 |
| ХАРАКТЕРИСТИКИ | 4 |
| Обзор | 4 |
| Основная информация | 4 |
| Размеры | 4 |
| Скорость, вместимость и масса | 4 |
| Размещение | 5 |
| Корпус и палуба | 5 |
| Информация о двигателе | 5 |
| ПОДРОБНОЕ ОПИСАНИЕ | 6 |
| 1999 Tiara 3500 Open 'Liquid Encouragement' Vessel walkthrough | 6 |
| 1999 Tiara 3500 Open 'Liquid Encouragement' Engines Generator and Systems | 6 |
| 1999 Tiara 3500 Open 'Liquid Encouragement' Interior Accommodations, and Comfort | 7 |
| 1999 Tiara 3500 Open 'Liquid Encouragement' Galley | 7 |
| 1999 Tiara 3500 Open 'Liquid Encouragement' Head | 8 |
| 1999 Tiara 3500 Open 'Liquid Encouragement' Electronics | 8 |
| 1999 Tiara 3500 Open 'Liquid Encouragement' Electrical | 8 |
| 1999 Tiara 3500 Open 'Liquid Encouragement' Deck and Fishing Equipment | 9 |
| 1999 Tiara 3500 Open 'Liquid Encouragement' Safety Equipment | 9 |
| 1999 Tiara 3500 Open 'Liquid Encouragement' Upgrades | 10 |
| Disclaimer | 10 |
| Исключения | 10 |
| Отказ от ответственности | 10 |
| ФОТОГРАФИИ | 12 |
| КОНТАКТЫ | 18 |
| Контактная информация | 18 |
| Телефоны | 18 |
| Время работы | 18 |

Адрес

18

ХАРАКТЕРИСТИКИ

Обзор

The Tiara 3500 Open is a luxury express cruiser with graceful lines, outstanding performance and features, and a time proven design that continues to satisfy its owners. "Liquid Encouragement" is a 1999 version that has been expertly maintained by a professional diesel mechanic and stands as one of the finer examples of a 1999 Tiara 3500 Open. "Liquid Encouragement" is powered by the preferable twin Cummins diesels and boast outriggers and rod holders for fishing, a 23 kt cruise, and luxury accomodations for maximum enjoyment on the water. If you are in the market for a good all around vessel that's fast, comfortable, and well taken care of then come see "Liquid Encouragement".

Основная информация

Тип судна: Крейсер

Модельный год: 1999

Год постройки: 1999

Страна: United States

Верх: Bimini Top

Размеры

Длина общая: 35' 0" (10.67m)

Длина палубы: 35' 6" (10.82m)

Ширина: 13' 3" (4.04m)

Мин. осадка: 3' 3" (0.99m)

Скорость, вместимость и масса

Крейс. скорость: 23 Kts. (26 MPH)

Макс. скорость: 32 Kts. (37 MPH)

Водоизмещение: 14000 Pounds

Вместимость воды: 70 Gallons

Вместимость сточного бака: 30 Gallons

Объем топливного бака: 360 Gallons

Размещение

Всего кают: 1

Всего коек: 3

Спальные места: 5

Всего ком. состава: 1

Корпус и палуба

Материал корпуса: Fiberglass

Комплектация корпуса: Modified V-Hull

Информация о двигателе

Двигатели: 2

Производитель: Cummins

Модель: 6BTA 5.9M3

Тип двигателя: Inboard

Тип топлива: Diesel

ПОДРОБНОЕ ОПИСАНИЕ

1999 Tiara 3500 Open 'Liquid Encouragement' Vessel walkthrough

The Tiara 3500 Open can be boarded either through the transom door from the swim platform or across the side deck at the aft end. The cockpit area is wide and roomy with aft facing seating and in-deck storage. Stepping up from the cockpit into the salon and helm area there is L shaped seating on the port side and a bar with sink on the starboard side. The helm is to starboard and the power double helm seat is wide and accommodating. The centerline companionway door opens wide and there is a helm convenience center just forward of the L shaped seating. Three steps lead down from the companionway into the interior of the 3500. The main electrical panel is mounted on the bulkhead to starboard and just forward of that is the convertible setee. The backrest for the dinette converts to a 'pullman' style berth. The head is to port and the galley is just forward of the head to port. The master stateroom is forward of the galley and is separated by a full size bulkhead. There are cedar lined hanging lockers port and starboard in the master stateroom and an island double berth runs fore to aft.

1999 Tiara 3500 Open 'Liquid Encouragement' Engines Generator and Systems

The Tiara 3500 engine hatch encompasses the entire upper cockpit and opens via hydraulic rams operated by an electric switch in the stern. There is also an access hatch in the centerline deck of the upper cockpit. All major systems are clearly labeled and logically laid out. Features include:

- Twin Cummins 6BTA 5.9M3 diesel engines rated at 370 horsepower each
- Engine hours are 798 port and 846 starboard
- 2 mounted 6-way fuel supply and return valves. clearly labeled
- 5 group 32 Deka Marine Master Deep Cycle batteries, 2 to port and 3 to starboard. New in 2016
- Westerbeke 5 kilowatt 3 cylinder diesel generator showing 407 hours. Generator portion remanufactured in 2016
- C-Charger 5000 Series 40 amp battery charger
- 'The Boatsafe' Marine Engine Compartment Heater
- Glendenning Main Engine Synchronizing System mounted on the forward engine room bulkhead and clearly labeled
- XchangeR oil changing system
- Packless shaft sealing system
- 1 3/4 inch stainless steel shafts
- 3 blade props
- 1 3/4 inch stainless steel shafts

- 2 Racor fuel filter/water separators
- 3 raw water intake filters. 1 for each engine and 1 for the generator
- Bronze thru hull fittings with ball valves
- Stainless steel exhaust elbows
- Overboard macerator discharge pump, clearly labled
- Pex style water piping
- 6 gallon water heater, new thermostats and element in 2015
- Fireboy engine room fire suppression system

1999 Tiara 3500 Open 'Liquid Encouragement' Interior Accommodations, and Comfort

The accommodations of the Tiara 3500 Open are comfortable, well thought out, and luxurious. There is ample seating for guests and the layout is logical and makes great use of available space. Features include:

- 12000 BTU Marine Air Systems Vector Series reverse cycle air conditioning system
- Passport II Marine Air Systems digital control panel
- Durable, weather and sun resistant seating with individual covers
- 2 person aft facing bench style seating starboard side, facing into the lower cockpit
- Wet bar starboard side between helm seat and rear facing seat
- 2 person electrically adjustable helm seat
- L shaped companion lounge port side
- Helm convenience center
- C shaped convertible dinette that converts to a berth
- Drop down Pullman style single berth over the dinette
- Queen size island master berth

1999 Tiara 3500 Open 'Liquid Encouragement' Galley

The galley on the Tiara 3500 open is useful and well thought out. there is ample storage in cabinets and on shelves. The counters are dual height and the sink is integrated Features include:

- Solid surface dual height countertops
- Cabinetry above and below
- Nova Cool under counter separated refrigerator and freezer
- Force 10 2 burner glass surface stove
- Emmerson microwave oven
- GE programmable coffee maker
- Single lever hot and cold faucet
- Natural light provided by overhead hatch with screen and a portlight in the hull side

- Artificial light is provided by an overhead recessed spotlight and by several lights mounted beneath the overhead lockers
- Pull out baskets in the lower cabinet and in the bulkhead mounted storage area just forward of the sink

1999 Tiara 3500 Open 'Liquid Encouragement' Head

The head on the Tiara 3500 Open is located on the port side at the bottom of the companionway steps. Features include:

- Single lever 'telephone' style shower with non slip, textured floor.
- Shower drains to a separate shower sump with a discharge pump controlled by a float switch
- Vacuflush head
- Wall mounted towel bar
- Solid surface vanity countertop with integrated sink
- Single lever hot and cold faucet
- Natural light provided by hullside port light
- Door mounted mirror
- Storage compartment with shelf below the sink
- Storage behind the hinged mirrored vanity

1999 Tiara 3500 Open 'Liquid Encouragement' Electronics

Liquid Encouragement boasts modern electronics that are critical to safe and efficient navigation and lend themselves well to comfort and entertainment. Electronics include:

- Garmin GPS Map 5212 navigation unit with 12 inch display
- Horizon depth display
- Icom IC-M45 Marine VHF Radio
- Lowrance X85 fish finder
- Viore 13 inch flat screen television located in the master berth
- Quasar television VCR combined unit
- Pioneer Bluetooth CD stereo new in 2016
- 6 inch Kicker speakers, 4 new in 2016

1999 Tiara 3500 Open 'Liquid Encouragement' Electrical

12 volt and 110 volt breaker panel mounted behind smoked, hinged, lexan along the midship bulkhead above and aft of the dinette

- 12 volt battery switches and breakers located in the storage compartment below the steps
- GFI protected outlets throughout

- Rocker switches for lighting throughout
- Overhead and spot stlye lights mounted in target areas
- 12 volt 'push to reset' weather resistant breakers mounted at the helm
- Rocker switches at the helm
- Cockpit shore power hookups

1999 Tiara 3500 Open 'Liquid Encouragement' Deck and Fishing Equipment

The Tiara 3500 Open is a versitle platform that performs well for fishing, cruising and overnighting. Features include:

- Anchor locker
- Fiberglass anchor pulpit with roller
- Anchor washdown outlet
- Custom stainless steel rail
- Maxwell electric anchor windlass
- Search light with helm remote operation
- Bow, spring, and stern cleats port and starboard
- Cockpit fresh water hook up
- Cockpit fresh water hot and cold hand held shower
- Cockpit and bridge deck courtesy lights
- Ample cockpit storage
- Covers for seats, helm and aft cockpit
- Radar arch
- Electric venting windshield with wipers
- Cockpit shore power hookups
- Transom door
- Swim platform with integrated swim ladder
- Out riggers
- 8 rod holders
- Integrated tackle storage
- Ample storage in the upper and lower cockpit in cabinets and under cushions

1999 Tiara 3500 Open 'Liquid Encouragement' Safety Equipment

Fire extinguishers

- Fireboy fire suppression system with helm remote operation
- Carbon Monoxide detector
- Smoke detectors

1999 Tiara 3500 Open 'Liquid Encouragement' Upgrades

Liquid Encouragement has been professionally maintained and upgraded by its current owner, a professional marine mechanic.

New in spring 2016

- 5 Deka Marine group 32 batteries
- Remanufactured generator (generator portion only)
- Pioneer stereo with Bluetooth
- Garmin 5212 12 inch display chartplotter and depth sounder
- 4 Kicker speakers
- Rear seal port clutch

New in Spring 2015

- Starters in both main engines
- Thermostats and element in the water heater
- Raw water impellers both main engines

2014

- A/C raw water pump
- Raw water washdown pump
- Bilge pump auto switches
- Forward bilge pump

Disclaimer

The Company offers the details of this vessel in good faith but cannot guarantee or warrant the accuracy of this information nor warrant the condition of the vessel. A buyer should instruct his agents, or his surveyors, to investigate such details as the buyer desires validated. This vessel is offered subject to prior sale, price change, or withdrawal without notice.

Исключения

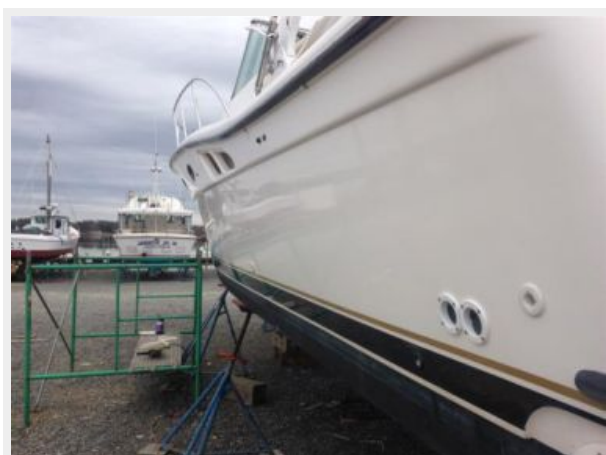
При продаже яхты исключаются личные вещи владельца.

Отказ от ответственности

Компания предоставляет описание судна или яхты добросовестно, но не может гарантировать точность этой информации, а также не ручается за техническое состояние. Покупатель должен проинструктировать своих агентов или оценщиков

исследовать представленную информацию более подробно, по собственному желанию. Продажа судна или яхты, изменение цены или снятие с продажи будет происходить без предварительного уведомления.

ФОТОГРАФИИ

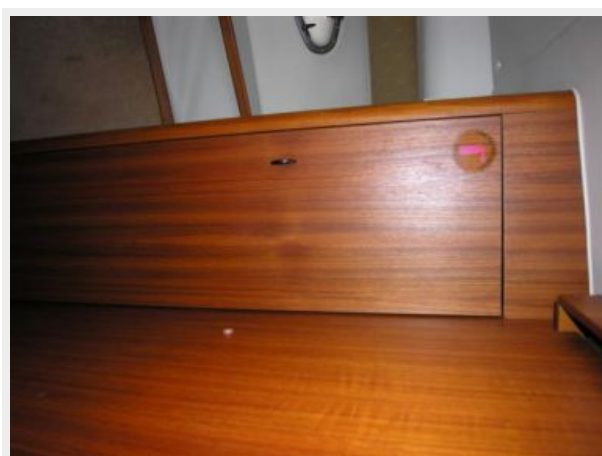
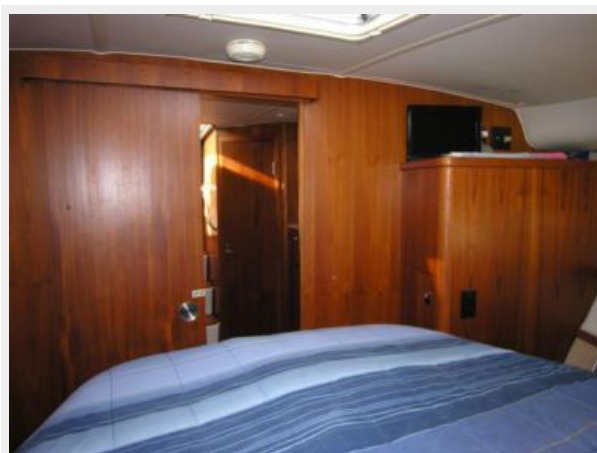












КОНТАКТЫ

Андрей Шестаков (Andrey Shestakov) – ведущий яхтенный брокер отдела продаж яхт и судов компании Shestakov Yacht Sales Inc. Официальный представитель Shestakov Yacht Sales Inc. для русскоговорящих клиентов в центральном офисе компании в Майами/Форт Лодердейл/Флорида/США.

Контактная информация

Email: andrey@shestakovyachtsales.com

Web: shestakovyachtsales.com

Телефоны

Краснодарский край: **+7(918)465-66-44**

США, Майами, Флорида: **+1(954)274-4435**

Время работы

Понедельник – Суббота: **9:00 - 21:00**
EDT

Воскресенье: **Закрето**

Адрес



Harbour Towne Marina, 850 NE 3rd St,
STE 213, Dania, FL 33004