

THE BIG GUY — VIKING



Builder: [VIKING](#)

Year Built: 2002

Model: Sport Fisherman

Price: PRICE ON APPLICATION

Location: United States

LOA: 55' 0" (16.76m)

Beam: 17' 0" (5.18m)

Max Draft: 4' 10" (1.47m)

Cruise Speed: 30 Kts. (35 MPH)

Our experienced yacht broker, Andrey Shestakov, will help you choose and buy a yacht that best suits your needs **The Big Guy — VIKING** from our catalogue. Presently, at Shestakov Yacht Sales Inc., we have a wide variety of yachts available on our sale's list. We also work in close contact with all the big yacht manufacturers from all over the world.

If you would like to buy a yacht **The Big Guy — VIKING** or would like help answering any questions concerning purchasing, selling or chartering a yacht, please call **+1(954)274-4435**

TABLE OF CONTENTS

TABLE OF CONTENTS	2
SPECIFICATIONS	7
Overview	7
Basic Information	7
Dimensions	8
Speed, Capacities and Weight	8
Accommodations	8
Hull and Deck Information	8
Engine Information	8
DETAILED INFORMATION	9
Updates	9
Salon	10
Galley / Dinette	11
Companionway	12
Master Stateroom	12
Master Head	12
VIP Forward Stateroom	13
Starboard Stateroom	13
Guest Head	14
Deck / Exterior	14
Cockpit	15
Engine Room	16
Flybridge	16
Fishing Equipment	17
Upgraded Electronics	17
Exclusions	18
Exclusions	18
Disclaimer	18

PHOTOS	19
2002 55 Viking - Salon	19
2002 55 Viking - Salon	19
2002 55 Viking - Salon	19
2002 55 Viking - Salon	19
2002 55 Viking - Salon	19
2002 55 Viking - Salon	19
2002 55 Viking - Dinette	20
2002 55 Viking - Dinette	20
2002 55 Viking - Companionway	20
2002 55 Viking - Companionway	20
2002 55 Viking - Master Stateroom	20
2002 55 Viking - Master Stateroom	20
2002 55 Viking - Master Stateroom	21
LVL_5526	21
2002 55 Viking - Rod Storage	21
2002 55 Viking - Rod Storage	21
2002 55 Viking - Rod Storage	22
2002 55 Viking - Rod Storage	22
2002 55 Viking - Rod Storage	22
2002 55 Viking - Head	22
2002 55 Viking - Rod Storage	22
2002 55 Viking - Rod Storage	22
2002 55 Viking - Head	23
2002 55 Viking - Head	23
2002 55 Viking - VIP Forward Stateroom	23
2002 55 Viking - VIP Forward Stateroom	23
2002 55 Viking - VIP Forward Stateroom	23
2002 55 Viking - VIP Forward Stateroom	23

2002 55 Viking - VIP Forward Stateroom	24
2002 55 Viking - Guest Head	24
2002 55 Viking - Guest Head	24
2002 55 Viking - Guest Head	24
2002 55 Viking - Guest Head	24
2002 55 Viking - Guest Head	24
2002 55 Viking - Port Stateroom	25
2002 55 Viking - Port Stateroom	25
2002 55 Viking - Head	25
2002 55 Viking - Port Stateroom	25
2002 55 Viking - Guest Head	26
2002 55 Viking - Cockpit / Mezzanine	26
2002 55 Viking - Release Fighting Chair	26
2002 55 Viking - Fighting Chair	26
2002 55 Viking - Fighting Chair	26
2002 55 Viking - Cockpit/Fighting Chair	26
2002 55 Viking - Flybridge	27
2002 55 Viking	27
2002 55 Viking - Flybridge	27
2002 55 Viking	27
2002 55 Viking - Flybridge	27
2002 55 Viking - Flybridge	27
2002 55 Viking - Flybridge	28
2002 55 Viking - Flybridge	28
2002 55 Viking - Flybridge	28
LVL_5501	28
2002 55 Viking - Flybridge	28
2002 55 Viking - Flybridge	28
2002 55 Viking - Flybridge	29

2002 55 Viking - Flybridge	29
2002 55 Viking - Flybridge	29
2002 55 Viking - Flybridge	29
2002 55 Viking - Flybridge	29
2002 55 Viking - Flybridge	29
2002 55 Viking - Flybridge	30
2002 55 Viking - Flybridge	30
2002 55 Viking - Flybridge	30
2002 55 Viking - Flybridge	30
2002 55 Viking - Flybridge	30
2002 55 Viking - Flybridge	30
2002 55 Viking - Engine Room	30
2002 55 Viking - Engine Room	31
2002 55 Viking - Engine Room	31
2002 55 Viking	31
2002 55 Viking - Engine Room	31
2002 55 Viking - Engine Room	32
2002 55 Viking - Engine Room	32
2002 55 Viking - Engine Room	32
2002 55 Viking - Engine Room	32
2002 55 Viking - Engine Room	33
2002 55 Viking - Engine Room	33
2002 55 Viking - Engine Room	33
2002 55 Viking - Engine Room	33
2002 55 Viking - Engine Room	33
2002 55 Viking - Engine Room	33
2002 55 Viking - Engine Room	34
2002 55 Viking	34
2002 55 Viking	34
2002 55 Viking	34

2002 55 Viking	34
2002 55 Viking	34
2002 55 Viking	35
2002 55 Viking	35
2002 55 Viking	35
2002 55 Viking - Profile	35
CONTACTS	36
Contact details	36
Telephones	36
Office hours	36
Address	36

SPECIFICATIONS

Overview

2018/2019 Updates:

- 2018 Sea keeper 9 - 2018
- New Engine Mounts - 2018
- Repacked Both Shafts - 2018
- Spare Props
- Two New Rudders 2018 -2019
- New Ice Chipper - 2018
- New Hot Water Tank - 2018
- Refrigerated Drink Box - 2018
- New MSR A/C Unit - 2019
- All New Electronics Garmin - 2-7616xsv and 1 7612xsv
- KVH 7 Satellite
- Garmin Reactor Auto Pilot with Smart Pump
- New FLIR M324 S
- Engine Room Painted - 2018/2019

Basic Information

Category: Sport Fisherman

Model Year: 2002

Year Built: 2002

Country: United States

Coast Guard #: 1126007

Fly Bridge: Yes

Cockpit: Yes

Dimensions

LOA: 55' 0" (16.76m)

Beam: 17' 0" (5.18m)

Max Draft: 4' 10" (1.47m)

MFG Length: 55' 0" (16.76m)

Speed, Capacities and Weight

Cruise Speed: 30 Kts. (35 MPH)

Water Capacity: 250 Gallons

Fuel Capacity: 1300 Gallons

Accommodations

Total Cabins: 3

Sleeps: 6

Total Heads: 2

Crew Cabin: 1

Hull and Deck Information

Hull Material: Fiberglass

Engine Information

Engines: 2

Manufacturer: MAN

Model: 2842LE404

Engine Type: Inboard

Fuel Type: Diesel

DETAILED INFORMATION

Updates

2018/2019 Updates:

- 2018 Sea keeper 9 - 2018
- New Engine Mounts - 2018
- Repacked Both Shafts - 2018
- Spare Props
- Two New Rudders 2018 -2019
- New Ice Chipper - 2018
- New Hot Water Tank - 2018
- Refrigerated Drink Box - 2018
- New MSR A/C Unit - 2019
- All New Electronics Garmin - 2-7616xsv and 1 7612xsv
- KVH 7 Satellite
- Garmin Reactor Auto Pilot with Smart Pump
- New FLIR M324 S
- Engine Room Painted - 2018/2019

July 2017 Updates:

- Man 1,000 engine service completed
- Generator oil and filters changed
- Carolina bottom paint job
- Prop Speed
- New Zincs
- Sanded Teak cockpit and coaming boards
- Painted lazarette and flybridge compartments
- New cockpit and flybridge lights

2015/2016/2017 Updates:

- New carpet, bedding, mattresses 2015
- Salon sofa and dinette recovered.
- All new exterior cushions
- New cockpit cover and helm chair covers 2015
- New canvas curtains in salon
- New nonskid foredeck and flybridge by Viking 2015
- Bottom sand blasted by Viking 2015
- Helm Chairs and fighting chair chrome and wood refinished in 2017
- New batteries in 2017
- HD 7 and three new TV'S 2017
- New electronics 2015
- Underwater lights
- Engine room painted 2016

Salon

The entrance flooring is Amtico teak and holly for extra durability. The electrical panel is starboard, power switchovers, and generator starting can be accomplished without stepping on the carpet. The credenza and galley countertops feature polished granite (2013), for a glossy low maintenance finish.

High gloss teak cabinetry along the starboard side, houses the Viking Home Theater system with Marantz components, bottle storage, and additional storage in drawers and cabinets.

There is a new flat screen TV above the dinette. The salon settee is covered in ultraleather, which is an upgraded style with an arm at the doorway, a gathered back, and hinged storage under. The coffee table ottoman also opens for storage and a teak tray with inlaid marlin doubles as a serving tray or a drink holder.

- L-shaped salon sofa - taupe color (re-covered)
- Custom rod storage system under sofa (2010)
- Amtico teak and holly entrance flooring
- Raritan ice machine (2015)
- Electrical panel up at eye level
- Granite credenza top with teak bullnose

- Luxury grade décor
- Silhouette blinds
- Viking home theater system
- Marantz amplifier
- Marantz three-disc CD/DVD player
- Marantz VHS VCR
- 50" HDTV 2017
- Sunbrella carpet runner
- Bronze mirror on aft side of galley counter
- Single remote control manages all audiovisual equipment
- Ottoman re-covered
- Recovered salon lambrquins (2015)

Galley / Dinette

The galley/dinette areas are the most usable of any boat in the class. Viking's galley layout with under counter Subzero drawer refrigeration and upper cabinets with large pullout storage drawers were first made popular on this model. The clean countertops with recessed stove, Corian sink, and high gloss teak cabinetry allow the very usable galley to go almost unnoticed. The dinette features a teak table, teak pedestal, and the dinette settee is covered in durable yet beautiful baby Ostrich. There is additional storage under the dinette sofa.

- Replaced countertop
- Dinette seating - taupe color (recovered)
- 110v pressure water system
- Grohe faucet with pullout sprayer
- High gloss Granite (2013)
- Mirrored backsplash
- Three (3) burner electric stove recessed with Granite covers
- Two (2) Subzero drawer style refrigerators (total of 4 drawers)
- Subzero drawer style freezer with icemaker (total 2 drawers)
- Sharp Carousel microwave/convection oven
- Electrical panel with water tank gauge and alarm panel
- Garbage disposal
- Dinette table cover
- Four (4) large pullout shelves in forward overhead cabinetry
- Amtico teak and holly flooring
- Additional storage cabinet in companionway overhead with pullout shelf
- Storage drawer under TV
- Storage cabinet outboard of TV cabinet

Companionway

The washer/dryer are to the starboard side of the companionway behind a teak door. There is a large cupboard adjacent to the companionway steps.

- Sunbrella step covers
- Sunbrella companionway runner
- Bilge access hatches for easy access
- Wrapped hatch carpet installation
- Padded upholstered panels
- Kenmore washer
- Kenmore dryer
- Awlgripped bilges
- Central VAC system

Master Stateroom

The port stateroom is the master, features a fore, and aft oriented queen bed with storage under. The ensuite head is spacious and includes Amtico teak, holly flooring, single piece glass shower door, and linen locker.

- New MSR A/C Unit - 2019
- Entry credenza with drawer and storage
- Large double door hanging locker
- Master bed lifts on gas shocks to access cavernous storage under
- Drawer storage under bed
- Drawers in outboard credenza
- Nightstands with bulkhead mounted lamps and drawer with storage under
- Mirrored wall with upholstered headboard
- Reading lights individually switched
- TV (2017)
- Custom wallpaper

Master Head

- Sea Land Vacuflush head system
- Glass single piece shower door
- Mirrored backsplash
- Mirrored upper vanity cabinet doors

- Exhaust fan
- Granite countertop with sink
- Grohe fixtures
- Mirrored linen locker
- Custom wallpaper

VIP Forward Stateroom

The forward stateroom features a double bed down to starboard and a single berth up to the port side. This versatile arrangement allows for up to three guests. This stateroom boasts private access to the guest head.

- Drawer storage under double bed
- Locker storage under upper berth
- Stereo speakers with volume control
- Custom wallpaper
- Double bed starboard
- Single bed up to port
- Hanging locker
- TV

Starboard Stateroom

The forward stateroom features a double bed down to starboard and a single berth up to the port side. This versatile arrangement allows for up to three guests. This stateroom boasts private access to the guest head.

- Drawer storage under double bed
- Locker storage under upper berth
- Stereo speakers with volume control
- Custom wallpaper
- Double bed starboard
- Single bed up to port
- Hanging locker
- TV

Guest Head

- Private access from forward and starboard guest staterooms
- Companionway access door for day head use
- Amtico teak and holly flooring
- Mirrored backsplash around upper vanity cabinet
- Mirrored doors for upper vanity cabinet
- Shower
- Granite countertop with Corian sink
- Grohe fixtures
- Sea Land Vacuflush head system
- Exhaust fan
- Lower vanity storage cabinet

Deck / Exterior

Entire vessel was painted with Alexseal by Bluewater Yacht Sales (Viking Dealer) in Hampton Virginia.

- New Hot Water Tank - 2018
- Two New Rudders (2018 / 2019)
- Replaced bow thruster motor - 2016
- Bow pulpit deleted
- No bow rail for clean custom look
- Lewmar windlass with rope and chain gypsy
- Custom removable bow chock for anchor and line
- Anchor locker with access from foredeck and fresh water faucet
- Handrails below flybridge
- Dockside under gunnel boxes port and starboard with water inlet and outlet, CATV and shore power receptacles
- Viking Fighting Lady Yellow hull color
- Custom double blue and white blue stripe
- Oval exhaust outlets

Cockpit

Tournament rigged cockpit features a beautiful teak deck, teak covering boards, Eskimo ice machine and a Release teak fighting chair.

- New Ice Chipper (2018)
- Refrigerated Drink Box (2018)
- Release fighting chair with rocket launcher. bait tray and tackle drawer (recovered in Mystic White Voyager with arms 2017)
- Fighting chair cover (2015)
- Transom fishbox
- Transom door w/ lift gate
- Tackle storage drawers
- Teak covering boards (2008)
- Teak deck (2008)
- In-deck fishbox
- In-deck livewell
- In-deck ice dump box for Eskimo
- Cockpit freezer
- Cockpit step box w/ teak lid
- Cockpit cover - Stamoid (2015)
- Gaff storage
- New Halon Bottle in Lazarette (2015)
- 6 Clearing rod holders in haunches
- 4 Rod holders in covering boards
- Awlgripped Lazarette
- Cabin door actuator (2016)
- Replaced electric reel outlets (2016)
- Replaced weather stripping on all cockpit lockers (2016)
- Replaced all cockpit door latches (2016)
- Replaced piano hinge on cockpit door lockers (2016)
- Painted fish box (2016)
- Painted all drain gutters (fishbox, livewell, and icebox) (2016)

- Painted livewell and ice box(2016)
- Replaced gas shocks, livewell, icebox and engine room hatch (2016)
- Replaced saltwater washdown spigot (2016)
- Replaced dockside water connector (2016)
- Replaced all insulation on freon lines-cockpit freezer (2016)
- Replaced spigot behind bait freezer (2016)
- Spare props in lazarette
- Saltwater and freshwater washdown

Engine Room

- MAN 2842LE404 1300HP engines
- Onan 20KW generator
- Engine Room Painted (2018/2019)
- New Engine Mounts (2018)

- Repacked Both Shafts (2018)

- 50A shore power with Glendenning cable-master, plus secondary 50A shore power inlet with cord
- BUC Isoboost isolation transformer for shore power
- Fuel prime pumps
- Dual Racor fuel filters for each main engine
- Racor fuel filter for generator
- 110V AC fresh water pump
- T valve for filling freshwater tank from shore water inlet
- Freshwater filter
- Hot water heater
- Eskimo icemaker plumbed into in-deck ice box
- Four (4) CruiseAir air conditioning systems re-hosed in 06'
- Power assist steering
- Awlgrippped engine room
- Engine room gauges
- Engine room start/stop buttons
- Emergency crash pumps (Y-valves on main engine seawater intakes)

Flybridge

The bridge of a 55 Viking is very spacious. Cushions are in excellent condition. Vessel is equipped with a bow thruster.

- Viking factory hardtop
- Maya US6 electric teaser reels

- Garmin Reactor Auto Pilot with Smart Pump

- New FLIR M324 S
- EPIRB - ACR (2015)
- Recessed teaser reel box in hardtop

- Strataglass 4 sided enclosure w/ track to track and 3 zippers in front curtains
- Custom fiberglass helm pod
- Glendenning single lever controls
- VDO gauges in helm pod
- Bow thruster control
- Two (2) large electronics boxes with Plexiglass covers in helm
- Console radio box with hinged lid
- 110v AC outlet under helm
- 12V DC outlet
- Sink/ice chest forward with washdown hose and drain
- Storage under forward flybridge
- Storage under flybridge console with light
- Release teak ladder back helm chairs with cushions (recovered in Mystic White Voyager) (2017)
- Seven (7) rod rocket launcher on flybridge rail
- Custom anchor light mast w/ wings
- EPIRB Class 406 (2015)

Fishing Equipment

- Center Rigger (2010)
- Rupp Outriggers
- Maya US6 Electric teaser reels
- Eskimo Ice Machine

Upgraded Electronics

- All New Electronics Garmin - 2-7616xsv and 1 7612xsv - 2018/2019
- KVH 7 Satellite (2018/2019)
- Garmin 7215
- Garmin AIS 600
- Garmin GXM52 Weather
- Garmin 1206 xHD Open Array Radar and Pedestal
- BTH Transducer and GSD24
- Garmin GC10 cameras (2 engine room, 1 Salon)
- TV Video and Audio to Bridge-viewed through Garmin displays

- Clarion Sirius XM
- Fusion AV700i stereo
- Icom 506 VHF with Shakespeare 5018
- Dual Hailer Horns with switch
- Red/Blue/White Lumitec courtesy lights in hardtop
- Remote in cockpit for bridge stereo

- Marantz SR7005 7.1 A/V receiver bluetooth/Sirius radio
- Marantz UD5007 Universal Blu-Ray/DVD/CD Disc Player
- RX101 Bluetooth receiver
- Sirius XM tuner and antenna
- Klipsch R-110SW Subwoofer
- Handrails powder coated white
- Camera in Cockpit

Exclusions

- Tools, artwork, and all spare parts

Exclusions

Owner's personal belongings.

Disclaimer

The Company offers the details of this vessel or yacht in good faith but cannot guarantee or warrant the accuracy of this information nor warrant the condition of the vessel. A buyer should instruct his representatives, agents, or his surveyors, to investigate such details as the buyer desires validated. This vessel or yacht is offered subject to prior sale, price change, or withdrawal without notice.

PHOTOS

2002 55 Viking - Salon



2002 55 Viking - Salon



2002 55 Viking - Salon



2002 55 Viking - Salon



2002 55 Viking - Salon



2002 55 Viking - Salon



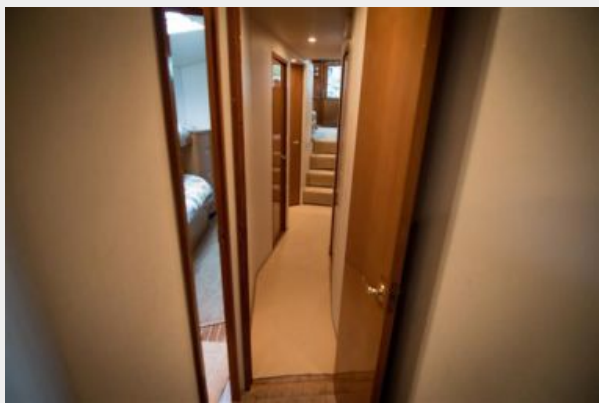
2002 55 Viking - Dinette



2002 55 Viking - Dinette



2002 55 Viking - Companionway



2002 55 Viking - Companionway



2002 55 Viking - Master Stateroom



2002 55 Viking - Master Stateroom



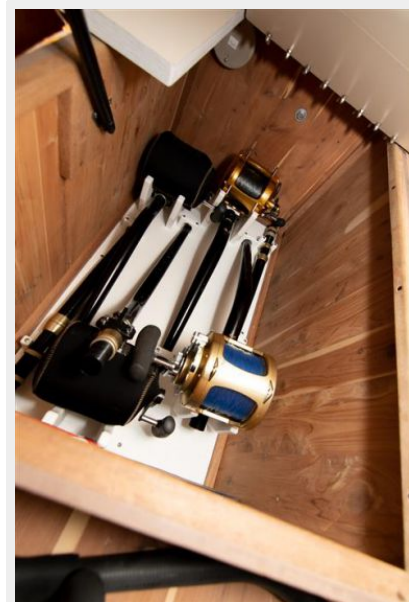
2002 55 Viking - Master Stateroom



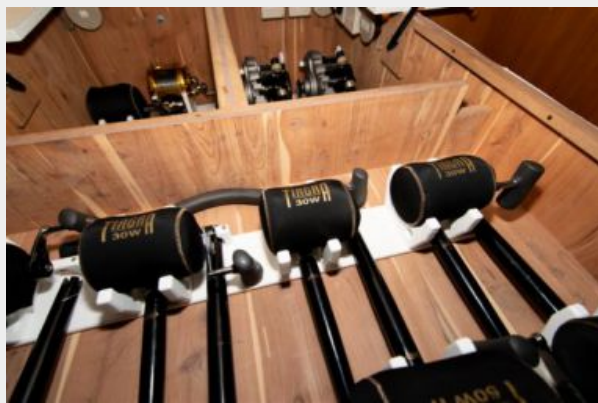
LVL_5526



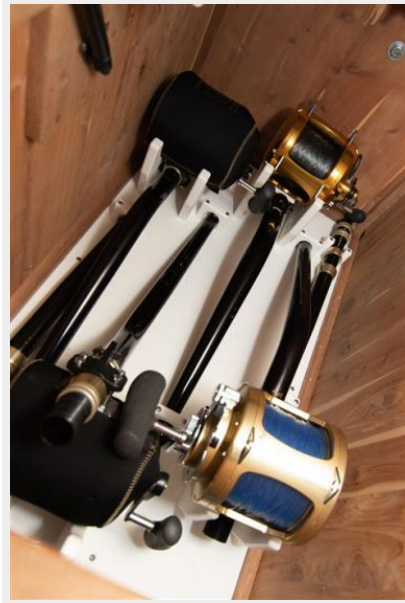
2002 55 Viking - Rod Storage



2002 55 Viking - Rod Storage



2002 55 Viking - Rod Storage



2002 55 Viking - Rod Storage



2002 55 Viking - Rod Storage



2002 55 Viking - Head



2002 55 Viking - Rod Storage



2002 55 Viking - Rod Storage



2002 55 Viking - Head



2002 55 Viking - Head



2002 55 Viking - VIP Forward Stateroom



2002 55 Viking - VIP Forward Stateroom



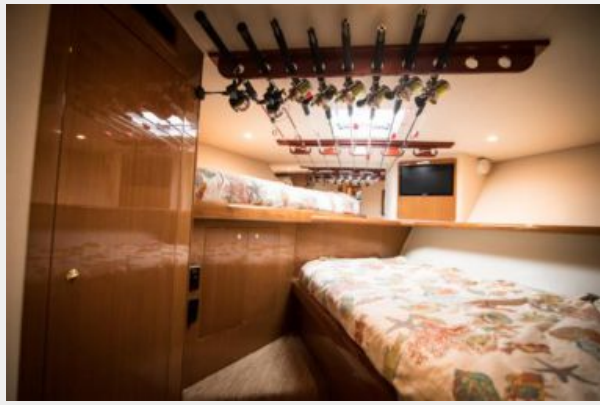
2002 55 Viking - VIP Forward Stateroom



2002 55 Viking - VIP Forward Stateroom



2002 55 Viking - VIP Forward Stateroom



2002 55 Viking - Guest Head



2002 55 Viking - Guest Head



2002 55 Viking - Guest Head



2002 55 Viking - Guest Head



2002 55 Viking - Guest Head



2002 55 Viking - Port Stateroom



2002 55 Viking - Port Stateroom



2002 55 Viking - Head



2002 55 Viking - Port Stateroom



2002 55 Viking - Guest Head



2002 55 Viking - Cockpit / Mezzanine



2002 55 Viking - Release Fighting Chair



2002 55 Viking - Fighting Chair



2002 55 Viking - Cockpit/Fighting Chair



2002 55 Viking - Fighting Chair



2002 55 Viking - Flybridge



2002 55 Viking



2002 55 Viking



2002 55 Viking - Flybridge



2002 55 Viking - Flybridge



2002 55 Viking - Flybridge



2002 55 Viking - Flybridge



2002 55 Viking - Flybridge



2002 55 Viking - Flybridge

LVL_5501



2002 55 Viking - Flybridge



2002 55 Viking - Flybridge



2002 55 Viking - Flybridge



2002 55 Viking - Flybridge



2002 55 Viking - Flybridge



2002 55 Viking - Flybridge



2002 55 Viking - Flybridge



2002 55 Viking - Flybridge



2002 55 Viking - Flybridge



2002 55 Viking - Flybridge



2002 55 Viking - Flybridge



2002 55 Viking - Flybridge



2002 55 Viking - Flybridge



2002 55 Viking - Engine Room



2002 55 Viking - Engine Room



2002 55 Viking - Engine Room



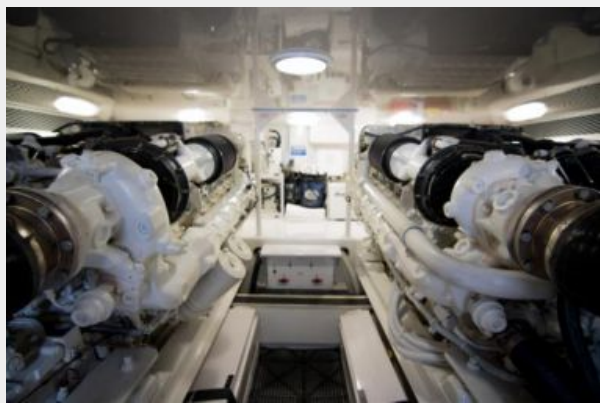
2002 55 Viking



2002 55 Viking - Engine Room



2002 55 Viking - Engine Room



2002 55 Viking - Engine Room



2002 55 Viking - Engine Room



2002 55 Viking - Engine Room



2002 55 Viking - Engine Room



2002 55 Viking - Engine Room



2002 55 Viking - Engine Room



2002 55 Viking - Engine Room



2002 55 Viking - Engine Room



2002 55 Viking - Engine Room



2002 55 Viking - Engine Room



2002 55 Viking



2002 55 Viking



2002 55 Viking



2002 55 Viking



2002 55 Viking



2002 55 Viking



2002 55 Viking



2002 55 Viking



2002 55 Viking - Profile



CONTACTS

Andrey Shestakov, leading yacht broker of the sales department of Shestakov Yacht Sales Inc. Shestakov Yacht Sales Inc., the official representative of the Miami/Fort Lauderdale FL headquarters.

Contact details

Email: andrey@shestakovyachtsales.com

Web: shestakovyachtsales.com/en/

Telephones

USA: +1(954)274-4435

Office hours

Monday – Saturday: **9:00 - 21:00** EDT

Sunday: **closed**

Address



Harbour Towne Marina, 850 NE 3rd St,
STE 213, Dania, FL 33004