

SPIRIT OF EUROPE — NAUTOR'S SWAN



Судостроитель: NAUTOR'S SWAN

Длина общая: 61' 11" (18.86m)

Год постройки: 2012

Модель: Гоночная яхта

Цена: **ЦЕНА ЯХТЫ ПО ЗАПРОСУ**

Местонахождение: Italy

Купить Spirit of Europe — NAUTOR'S SWAN а также выбрать подходящую вам яхту из нашего каталога яхт вам поможет опытный яхтенный брокер Андрей Шестаков. На сегодняшний день компания Shestakov Yacht Sales Inc. имеет большое количество яхт в собственном списке продаж, а также тесно сотрудничает со всеми крупными яхтенными производителями по всему миру.

Для того чтобы купить яхту Spirit of Europe — NAUTOR'S SWAN а также проконсультироваться по любому вопросу связанному с покупкой, продажей, чартером яхт позвоните по телефону **+7(918)465-66-44**.

ОГЛАВЛЕНИЕ

ОГЛАВЛЕНИЕ	2
ХАРАКТЕРИСТИКИ	3
Обзор	3
Основная информация	3
Размеры	3
Размещение	3
Корпус и палуба	3
Информация о двигателе	3
ПОДРОБНОЕ ОПИСАНИЕ	4
Detailed information	4
Исключения	15
Отказ от ответственности	15
ФОТОГРАФИИ	16
КОНТАКТЫ	22
Контактная информация	22
Телефоны	22
Время работы	22
Адрес	22

ХАРАКТЕРИСТИКИ

Обзор

The new Swan 60 offers a high-volume interior, a large and well-protected cockpit and regatta levels of performance. To meet these conflicting demands, Nautor has made extensive use of state-of-the-art technology in the design and the construction of these magnificent yachts... The boat features an entirely new hull built from advanced materials, while at the same time preserving Nautor Swan's core values: to be comfortable for cruising and fast for offshore racing

Основная информация

Тип судна: Гоночная яхта

Подкатегория: Гоночная яхта

Модельный год: 2012

Год постройки: 2012

Страна: Italy

Размеры

Длина общая: 61' 11" (18.86m)

Размещение

Всего кают: 3

Корпус и палуба

Материал корпуса: Composite

Информация о двигателе

Производитель: Yanmar

ПОДРОБНОЕ ОПИСАНИЕ

Detailed information

HULL & APPENDAGES

Construction

Hull is constructed using a SPRINT/pre preg carbon fibre /epoxy sandwich laminate over Corecell foam core. Laminated in a female mould to ensure excellent external finish

Stiffeners, chain plates, mast step and bulkheads in Carbon Fibre pre preg using unidirectional fibres Hull windows on either side of saloon

Hydraulically operated transom door doubles as a bathing platform

Semi-closed transom version

Keel

Keel is comprised of antimony hardened lead bulb and hi tensile steel fin, bolted to hull with hi-tensile bolts, draft (3.6m/11'9")

Hull Finish

The hull is painted using DuPont paint systems

Hull colour Snow White, Water and boot top lines, Flag Blue .

Bottom is treated with epoxy primer then International antifouling paint

Steering System

The rudder is supplied by Isotop, carbon skins over foam core and a carbon rudderstock

Upper and lower JP3 rudder bearings, Lightweight alloy quadrant

Twin 120mm clear coated carbon steering wheels.

Two composite steering pedestals with console for control buttons and screens

Emergency steering system in lazarette

DECK

Construction

Deck is constructed in SPRINT/pre-preg sandwich using Corecell foam. Hi-density core under hi-load areas. Composite surfaces are painted with Snow White DuPont paint system.

The side decks, fore deck, cockpit sole and seats are covered with 55 x 9 mm quarter cut teak battens with 5 mm white colour caulking. 30 mm high teak toe rail forward of the mast

Two built-in angled adjustable helmsman's supports are located at the steering consoles.

Cockpit

Large cockpit providing safe access to the interior, designed for comfort both under sail and at anchor. Cockpit seats are 2.5m (8'2") long with backrests on either side

A 2m (6'6") long white-painted semi-permanent cockpit table with folding leaves is mounted in the centre of the cockpit. Table is mounted on telescopic legs to adjust height, drops down to become a sunbathing area

Deck Equipment

Stainless pushpit, pulpit and stanchions

Handrails in cockpit

6x pop-up mooring cleats with fairleads integrated into pushpit and pulpit bases

See anchoring and mooring in equipment section

Winches (Harken)

Primary 2x B 990.3 STRAD EH with freespinningbases

Halyards 2x B 65.3 STRAD EH with free spinningbases

Mainsheet

Single point mainsheet aft of helmsman connected to hydraulically operated Magic Trim system mounted in lazarette. Control buttons on steering pedestal

Sailing Hardware

Removable carbon fibre bowsprit – A-frame type including bobstay,

Harken tracks/cars for jib sheet

Holmatro hydraulic ram for genoa car adjustment

Additional hydraulic ram for inhaulers

Jib Cunningham System, control in cockpit

Harken foot, halyard and spi sheet blocks. Spinlock jammers

Wichard and Harken padeyes

Hatches & Portlights

Custom made flush mounted hatches with gutters in white painted composite, all supported by gas rams. Manually sliding companionway hatch and drop down washboard

Acrylic portlights on either side on coachroof

Teak covered hatches

- Above forepeak
- Above saillocker
- Anchorlocker
- Lazarette
- Life raftstorage
- Gas locker
- Steering gear access locker
- Helm foot stands

Nautor Custom Flush Hatches

- Above forward Cabin
- Above saloon
- Above aft heads

Canvas

Recessed sprayhood forward of cockpit

Canvas sun awning connects via boltrope to boom and covers entire cockpit area

Cushions for cockpit area. Wheel and pedestal covers. Rope coil pockets

Mainsail cover

INTERIOR

General

Interior woodwork is hand-rubbed satin varnished teak

Removable overhead panels in all cabins

Foam cored floorboards in varnished teak with koto striping.

Door handles Fusital type

Cotton upholstery for sofas, cabin seating. Overhead blinds/mosquito nets on hatches

LED reading lights at the head of each berth.

Leather detail including:

- Mast cover in saloon
- Navigator seat

Interior Canvas

Lee cloths for all berths

Crew covers for berths and settees in Sunbrella

Dining table cover in Sunbrella Transparent PVC

Canvas covers for main entrance stairs

Floor covers for interior

Forward Cabin (Owner's Suite)

The forward cabin features upper and lower pipe berths on either side aft. Hanging lockers on both sides forward. Upper lockers for additional storage can be found on each side of berth. Large double hatches allow generous amounts of natural light. Sail locker located forward

Aft Cabins (Both sides aft, identical mirrored cabins)

Aft cabins feature pipe cots inboard and outboard. A hanging locker is located outboard at the forward end of the outboard berth. Counter top with a tray for loose items at centreline. The visible hull outboard is covered with lightweight white painted panels. Entrance to the heads are adjacent the cabin entrances. Openable portholes to cockpit and aft deck allow flow of natural air and light into the cabin. En suite head with wash basin, WC, shower, mirror and storage lockers

Saloon

The saloon features an open, voluminous arrangement with an integrated galley and navigation areas. Dining for six persons is provided on port side consisting of dining table, settee and two Vaar natural teak chairs. A three-person settee is located on starboard side with a locker aft of the settee. Upper lockers for storage are placed outboard on both sides. The exposed hull outboard is covered with lightweight white painted panels.

Deckhead at centreline integrates indirect lighting and a handrail. Access to engine room is located behind the main companionway. On the aft starboard side, a bar area including storage lockers and drawers.

Galley

The galley is located on the port side of the yacht with direct access to saloon. Work surfaces are finished in Corian. The sink, draining rack and storage for cutlery are located in a centreline galley island. The gimballed stove is located in the outboard counter with an exhaust fan above.

Microwave oven is integrated in the upper locker aft. The fridge-freezer is located near the entrance and the saloon for easy access. All drawers and storage lockers have been customized to accommodate tableware, pots, pans and galley items.

Galley Equipment

Front-loading refrigerator 115L Front-loading freezer

Four-burner gas stove with electric oven. Miele microwave oven

Exhaust hood over cooker

Nav Station

Chart table with opening top and drawers is outboard facing and located on the starboard aft side of saloon. Instrument panels outboard with recessed mounting of instruments and controls

Engine Room

Located centreline between galley and nav station. Accessible from three sides with removable panels.

ENGINE & SYSTEMS

Main propulsion engine is a Yanmar 4 JH4-THE 79Kw (110Hp)

Four-blade Brunton Varifold propeller on 38mm shaft. ZF 25A gearbox

500L (132UsG) total fuel capacity in two polyethylene tanks

Semi dry exhaust by Halyard, water is separated from gas for quiet operation

MaxPower R200/8 swing type retractable DC powered bow thruster.

Reverso oil change pump connected to engine and generator

Hydraulic System

Bosch Rexroth DC power pack with two electric pumps operating:

- Backstay
- Boomvang

- Outhaul
- Cunningham
- Jib furler lengthadjuster
- Mainsheet magic trim
- Transom hatch
- Jib car adjusters
- Jib inhauler (not installed)
- Jib Cunningham

Pneumatic System

The yacht is equipped with a low-pressure compressed air system, used mainly for transom door sealing

Plumbing Systems

Pressurized hot/cold water system distributed to galley, deck shower and all bathrooms

Water capacity 400L in two polyethylene tanks

Two Aqua Jet Flowmaster 24v water pressure pump with one 2L pressure vessel

50-litre stainless steel hot water tank, heated by engine operation or 220v element

Johnson deck wash pump for seawater circuit, hose connection in anchor locker

Refrigeration System

Frigonautica 24v DC refrigeration compressors for fridge and freezer. Seawater cooled

Ventilation System

Forced air ventilation system draws air from throughout the boat and exhausts through transom area Galley exhaust fan. Separate engine room and battery box ventilation systems

Drainage Systems

Grey water from washbasins, showers, condensing water from air conditioning and freezer/fridge is collected to transfer pumps and pumped out above waterline

Black water is collected in 2x 40L holding tanks (one for each head) and pumped out via 24v pump

All heads are Tecma Silence 24v, fresh water flushing

Four separate bilge areas are emptied using 24v electric or Whale manual pumps automatic bilge pumps in main saloon and lazarette

ELECTRICAL SYSTEM

DC System

The DC-system is based on Multiplexing Technology. The CAN-technology allows distributed switching and protection of electrical loads. All functions can be controlled and monitored on a touch screen

Service battery bank 24v 480 Ah / 5h – gel type batteries

Handling system batteries 24v 75Ah / 20h – gel type batteries

Engine and generator starting batteries 12v 75A / 20h

LED overhead and indirect lighting throughout boat

Lopolight LED navigation lights

Masthead tri-colour

AC System

The AC system is a 230 V 50/60 Hz single-phase three-wire. The 230V can be powered by the diesel generator or by shore connection

There are also a number of 230 V 50 Hz appliances powered by a DC/AC inverter.

230v 50A Shore Power system

Chargers/Inverters

One Mastervolt 24v 100A battery charger for service battery bank

Two Mastervolt Magic 24/24 20A DC//DC chargers between service and handling battery banks

110A 24V alternator on main engine for DC battery charging

Alternators on engine and generator for charging start batteries

Master 24/2500 Inverter supplying AC consumers Mastervolt

Separate inverter for the Dell computer 230/350VA 50 Hz Mastervolt 24/350AC

Monitoring System

The following alarms are displayed on the touch screen including an audio signal at the helm:

- Bilge levels high

- Black water tank levels full
- Water pressure pumps run dry
- Deck wash pump run dry
- Water in fuel separators
- Low battery voltage, service battery bank
- Low battery voltage, handling system battery bank Navigation light failure (side, stern and motoring lights)
- LPG leakage
- Generator overload
- Level metering:
 - Water tanks
 - Fuel tanks
 - Black water tanks

ELECTRONIC SYSTEMS

Sailing instrument

B&G H3000 Performance Sailing Instruments comprised of:

B&G H3000 Hercules Motion mainprocessor.

One multifunction GFD at the navigation station

One GFD display on port steering pedestal

4x 20/20 displays mounted on Halls Spars mast bracket below gooseneck

Vertical Mastheadunit

Flush mounted boat speed sensor

Halcyon gyrocompass

Navigation Instruments

Furuno NavNet navigation system. System includes multifunction displays on both port and starboard steering consoles and black-box Furuno at the navigation station connected to the LCD display at the nav station.

Furuno system is controlled by a trackball positioned at the nav station

Integrated Furuno radar with 4Kw 60cm radome mounted on front of mast

Autopilot System

B&G autopilot with one GPD control on starboard steering pedestal

Dedicated continuous running 24v Marsili/Bosch Rexroth power pack driving Marsili cylinder Autopilot pump and cylinder removable, 2 pcs quick connection on hydraulic hoses

Computer Systems

Dell OptiPlex 780 ultra compact computer connected to 15.6-inch widescreen monitor at nav station Internal wireless local area network (WLAN) available throughout the yacht and deck.

The Dell computer is connected to the network allowing tactical software control from an iPad or equivalent. MaxSea Time Zero navigation software

Communications Systems

Fleet Broadband 250 satellite communications system with antenna on pushpit

Simrad RS-87H VHF/DSC with additional handset and speaker in cockpit

Lightweight VHF antenna AC Marine CELmar VHF onmasthead

Class B AIS transponder, Simrad NAIS-400 including GPS and VHF antenna splitter

Simrad NSPL-400. System connected to VHF antenna on mast top. GPS is antenna positioned on

Entertainment Systems

Yamaha stereo system connected to Russound splitter and speakers in cockpit and saloon

MAST & RIGGING

Two-spreader Hall Spars hi-modulus carbon fibre mast finished in clear coat.

Harken Switch track Mast jack cylinder with manual pump. Swept spreaders 21 degrees

Hall Spars SCR aerofoil carbon standing rigging

Hall Spars V-Boom in carbon fibre allowing up to three reefs, clear coat

Reckmann UD3 Sphere electric head stay furler with double groove carbon foil.

Rod racing headstay and tuff luff foil

Cruising Jib halyard on hydraulic cylinder

Real-time Reckmann UD3 forestay length adjuster Boom vang

Removable carbon fibre bowsprit with bobstay for racing

Removable mast jack and pump

Sail Areas

Fore Triangle 90.1m 970 sp.ft.

Main Sail 125.86m 1355 sq.ft

Jib 95m 1023 sq.ft

Assy Spi 320m 3444 sq.ft

Running Rigging

Custom running rigging inventory available by request

EQUIPMENT

General Equipment

Transport cradle

Folding carbon fibre gangway

Winch handles

Basic tools for engine and generator maintenance

Basic spare parts for engine and generator

Suction lifters for floorboards

Sounding rods for fuel and water tanks

Flagpole

Boarding ladder

Anchoring and Mooring

Anchor windlass Lewmar V6 with remote control on foredeck, removable for racing with GRP cover. Folding anodized aluminium anchor arm, supported by gas spring

One CQR 75lbs (34Kg) galvanized anchor on folding arm

80m – 12mm high tensile anchor chain

One Fortress 21.2Kg alloy anchor stowed in lazarette

5m 10mm chain with 50m 18mm nylon rhode for spare anchor

Assorted mooring lines

Assorted fenders

Boathook

Safety Equipment

Inventory available on request

SAILS by North Sails

Mainsails	Year Material / Notes	Location
-----------	-----------------------	----------

Offshore main	2014 Carbon Spectra panel, no logo	Onboard
---------------	------------------------------------	---------

Inshore main		Hangar
--------------	--	--------

Upwind

5x Jibs		Hangar
---------	--	--------

Downwind

4x Spi		Hangar
--------	--	--------

Storm Sails

Storm Jib	Hangar
Try sail	Hangar

Исключения

При продаже яхты исключаются личные вещи владельца.

Отказ от ответственности

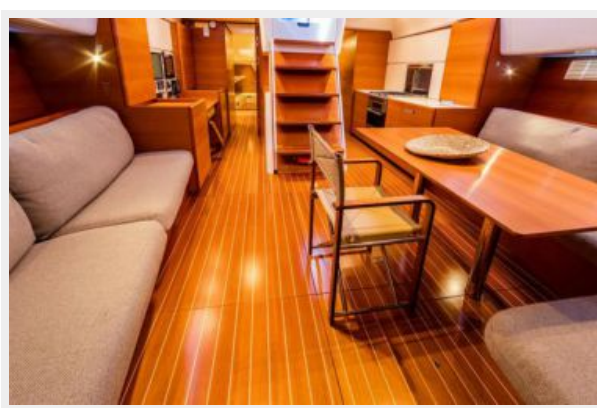
Компания предоставляет описание судна или яхты добросовестно, но не может гарантировать точность этой информации, а также не ручается за техническое состояние. Покупатель должен проинструктировать своих агентов или оценщиков исследовать представленную информацию более подробно, по собственному желанию. Продажа судна или яхты, изменение цены или снятие с продажи будет происходить без предварительного уведомления.

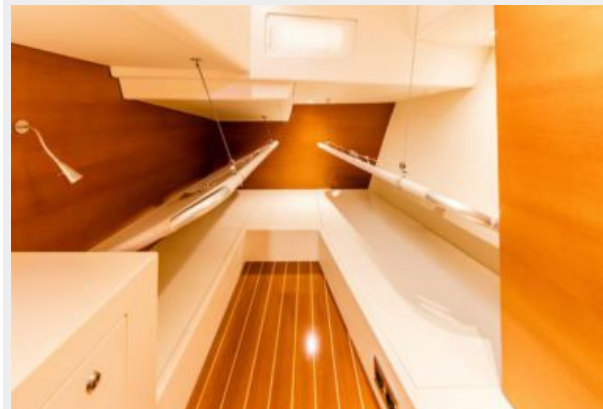
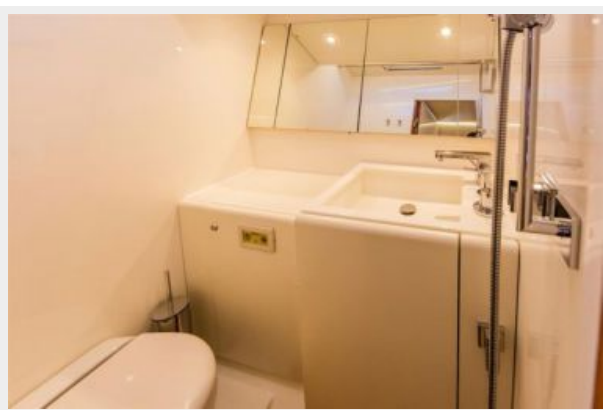
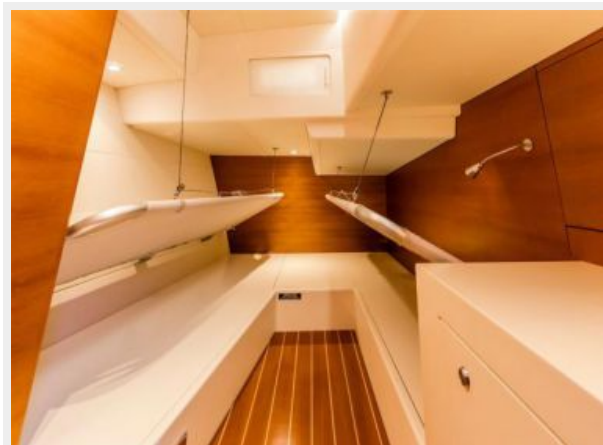
ФОТОГРАФИИ

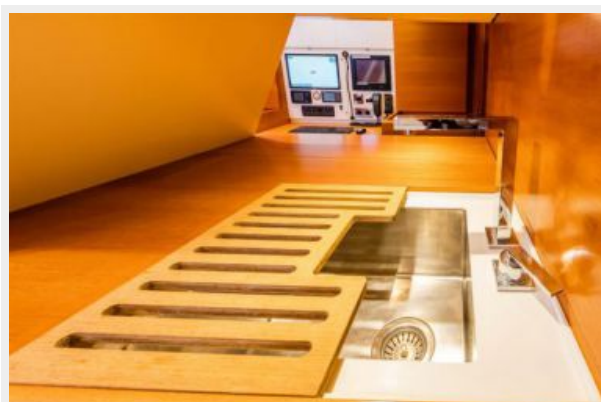












КОНТАКТЫ

Андрей Шестаков (Andrey Shestakov) – ведущий яхтенный брокер отдела продаж яхт и судов компании Shestakov Yacht Sales Inc. Официальный представитель Shestakov Yacht Sales Inc. для русскоговорящих клиентов в центральном офисе компании в Майами/Форт Лодердейл/Флорида/США.

Контактная информация

Email: andrey@shestakovyachtsales.com

Web: shestakovyachtsales.com

Телефоны

Краснодарский край: **+7(918)465-66-44**

США, Майами, Флорида: **+1(954)274-4435**

Время работы

Понедельник – Суббота: **9:00 - 21:00**
EDT

Воскресенье: **Закрыто**

Адрес



Harbour Towne Marina, 850 NE 3rd St,
STE 213, Dania, FL 33004