

SGM — NAUTOR'S SWAN



Судостроитель: NAUTOR'S SWAN

Длина общая: 61' 11" (18.86m)

Год постройки: 2012

Модель: Cruising/Racing Sailboat

Цена: ЦЕНА ЯХТЫ ПО ЗАПРОСУ

Местонахождение: Italy

Купить **SGM — NAUTOR'S SWAN** а также выбрать подходящую вам яхту из нашего каталога яхт вам поможет опытный яхтенный брокер Андрей Шестаков. На сегодняшний день компания **Shestakov Yacht Sales Inc.** имеет большое количество яхт в собственном списке продаж, а также тесно сотрудничает со всеми крупными яхтенными производителями по всему миру.

Для того чтобы купить яхту **SGM — NAUTOR'S SWAN** а также проконсультироваться по любому вопросу связанному с покупкой, продажей, чартером яхт позвоните по телефону **+7(918)465-66-44**.

ОГЛАВЛЕНИЕ

ОГЛАВЛЕНИЕ	2
ХАРАКТЕРИСТИКИ	3
Обзор	3
Основная информация	3
Размеры	3
Размещение	3
Корпус и палуба	3
Информация о двигателе	3
ПОДРОБНОЕ ОПИСАНИЕ	4
Detailed information	4
Исключения	13
Отказ от ответственности	14
ФОТОГРАФИИ	15
КОНТАКТЫ	22
Контактная информация	22
Телефоны	22
Время работы	22
Адрес	22

ХАРАКТЕРИСТИКИ

Обзор

The new Swan 60 offers a high-volume interior, a large and well-protected cockpit and regatta levels of performance. To meet these conflicting demands, Nautor has made extensive use of state-of-the-art technology in the design and the construction of these magnificent yachts... The boat features an entirely new hull built from advanced materials, while at the same time preserving Nautor Swan's core values: to be comfortable for cruising and fast for offshore racing

Основная информация

Тип судна: Cruising/Racing Sailboat

Подкатегория: Cruising/Racing Sailboat

Модельный год: 2012

Год постройки: 2012

Страна: Italy

Размеры

Длина общая: 61' 11" (18.86m)

Размещение

Всего кают: 3

Корпус и палуба

Материал корпуса: Composite

Информация о двигателе

Производитель: Volvo

ПОДРОБНОЕ ОПИСАНИЕ

Detailed information

HULL & APPENDAGES

Construction

Hull is constructed using a SPRINT/pre preg carbon fibre /epoxy sandwich laminate over Corecell foam core. Laminated in a female mould to ensure excellent external finish

Stiffeners, chain plates, mast step and bulkheads in Carbon Fibre pre preg using unidirectional fibres Hull windows on either side of saloon and one in each aft cabin

Hydraulically operated transom door doubles as a bathing platform

Keel

Keel is comprised of antimony hardened lead bulb and hi tensile steel fin, bolted to hull with hi-tensile bolts, draft (3.6m/11'9")

Steering System

- The rudder is supplied by Isotop, carbon skins over foam core and a carbon rudderstock
- Upper and lower JP3 rudder bearings, Lightweight alloy quadrant
- Twin 120mm clear coated 3-spoke carbon steering wheels 1.6 turns H.O to H.O.
- Two composite steering pedestals with console for control buttons, steering compass and nav instruments
- Emergency steering system in lazarette

DECK

Construction

Deck is constructed in SPRINT/pre-preg sandwich using Corecell foam. Hi-density core under hi-load areas. Composite surfaces are painted with Snow White DuPont paint system.

Semi closed transom. The side decks, fore deck, cockpit sole and seats are covered with 55 x 9 mm quarter cut teak battens with 5 mm white colour caulking. 30 mm high teak toe rail forward of the mast

Two built-in angled adjustable helmsman's supports are located at the steering consoles.

Large cockpit providing safe access to the interior, designed for comfort both under sail and at anchor. Cockpit seats are 2.5m (8'2") long with backrests on either side.

A 2m (6'6") long white-painted semi-permanent cockpit table with folding leaves is mounted in the centre of the cockpit.

Deck Equipment

- Stainless pushpit, pulpit and stanchions
- 6x pop-up mooring cleats
- See anchoring and mooring in equipment section

Winches (Harken)

- Primary 2x B 990.3 STRAD EH with freespinningbases
- Halyards 2x B 65.3 STRAD EH with free spinningbases

Mainsheet

Single point mainsheet aft of helmsman connected to hydraulically operated Magic Trim system mounted in lazarette. Control buttons on steering pedestal and wireless remote control.

Sailing Hardware

- Removable carbon fibre bowsprit – A-frame type including bobstay
- Harken tracks/cars for jib sheet
- Hydraulic piston for inhauler adjustment (not installed)
- Holmatro hydraulic ram for genoa car adjustment
- Jib Cunningham System, control in cockpit
- Harken foot, halyard and spi sheet blocks Spinlock jammers
- Wichard and Harken padeyes

Hatches & Portlights

Custom made flush mounted hatches with gutters in white painted composite, all supported by gas rams. Manually sliding companionway hatch and drop down washboard.

Acrylic portlights on either side on coachroof.

Teak covered hatches

- Anchorlocker
- Above forepeak
- Lazarette
- Life raftstorage
- Gas locker
- Helm foot stands
- Steering access locker

Nautor Custom Flush Hatches

- Above forward head
- Above forward Cabin
- Above saloon
- Above aft heads
- Above aft cabins

Deck Canvas

- Recessed sprayhood forward of cockpit
- Canvas sun awning connects via boltrope to boom and covers entire cockpit area
- Cushions for cockpit area. Wheel and pedestal covers. Rope coil pockets
- Mainsail cover. Padded bag for cockpit table
- Canvas covers for main entrance stairs

INTERIOR

General

- Removable overhead panels in all cabins with recessed LED lighting
- Foam cored floorboards
- Door handles Fusital type.
- Cotton upholstery for sofas, cabin seating. Overhead blinds/mosquito nets on hatches
- LED reading lights at the head of each berth.

Leather detail including:

- Mast cover insaloon
- Navigators seat
- Leather pockets in each cabin (not installed)

Interior Canvas

- Lee cloths for all berths
- Cotton crew covers for berths and settees
- Dining table cover in Sunbrella

Forward Cabin (Owner's Suite)

The forward cabin features a queen size berth with padded headboard on the port aft side with two-person settee on the starboard side. Hanging lockers on both sides forward. Upper lockers for additional storage on either side outboard. Large double hatches allow generous amounts of natural light. Ensuite head located forward and features separate shower compartment, washbasin, mirrors, storage lockers, and Tecma Silence WC

Aft Cabins (Both sides aft, identical mirrored cabins)

Aft cabins feature twin berths aft. An additional filler piece makes the berths in to a double berth when required. A hanging locker is located outboard at the forward end of the outboard berth. Counter top with a tray for loose items at centreline. The visible hull outboard is covered with lightweight upholstered panels. Bedside outboard has leather pockets for smaller storage. Entrance to the heads are adjacent the cabin entrances. Openable portholes to cockpit and aft deck allow generous flow of natural air and light into the cabin. Hull window outboard. En suite head with wash basin, WC, shower, mirror and storage lockers

Saloon

The saloon features an open, voluminous arrangement with an integrated galley and navigation areas. Dining for six persons is provided on port side consisting of dining table, settee and two Vaar natural teak chairs. Two table lights on either side, forward. A three-person settee is located on starboard side with a locker aft of the settee. Upper lockers for storage are placed outboard on both sides. The exposed hull outboard is covered with lightweight varnished panels.

Deckhead at centreline integrates indirect lighting and a handrail. Access to engine room is located behind the main companionway. On the aft starboard side, a bar area including custom made glass cupboard, and storage lockers for bottles and serving items

Galley

The galley is located on the port side of the yacht with direct access to saloon. Work surfaces are finished in Corian. The sink, draining rack and storage for cutlery are located in a centreline galley island. The gimballed stove is located in the outboard counter with an exhaust fan above.

Microwave oven is integrated in the upper locker aft. The fridge-freezer is located near the entrance and the saloon for easy access. All drawers and storage lockers have been customized to accommodate tableware, pots, pans and galley items.

Galley Equipment

- Front-loading refrigerator 115L
- Front-loading freezer
- Four-burner gas stove with electric oven Miele microwave oven
- Exhaust hood over cooker
- Dishwasher, Fisher&Paykel drawer type

Nav Station

Chart table with opening top and drawers is outboard facing and located on the starboard aft side of saloon. Instrument panels outboard with recessed mounting of instruments and controls

Engine Room

Located centreline between galley and nav station. Accessible from three sides with removable panels.

ENGINE & SYSTEMS

- Main propulsion engine is 79Kw (110Hp)
- Four-blade Brunton Varifold propeller on 38mm shaft. ZF 25A gearbox
- 500L (132UsG) total fuel capacity in two polyethylene tanks
- Semi dry exhaust by Halyard, water is separated from gas for quiet operation
- MaxPower R200/8 swing type retractable DC powered bow thruster.
- Reverso oil change pump connected to engine and generator

Hydraulic System

Bosch Rexroth DC power pack with two electric pumps operating:

- Backstay
- Boomvang
- Outhaul
- Cunningham
- Jib furler lengthadjuster
- Mainsheet magic trim
- Transom hatch
- Jib car adjusters
- Jib inhauler (not installed)

Pneumatic System

The yacht is equipped with a low-pressure compressed air system, used mainly for transom door sealing

Plumbing Systems

- Pressurized hot/cold water system distributed to galley, deck shower and all bathrooms
- Water capacity 400L in two polyethylene tanks
- Two Aqua Jet Flowmaster 24v water pressure pump with one 2L pressure vessel
- 50-litre stainless steel hot water tank, heated by engine operation or 220v element
- Sea Recovery Ultra Whisper 600 series Watermaker producing 95 l/h
- Johnson deck wash pump for seawater circuit, hose connection in anchor locker

Refrigeration System

Frigonautica 24v DC refrigeration compressors for fridge and freezer. Seawater cooled

Ventilation System

230v AC Marineair air conditioning system circulates cooled or heated water throughout boat,

independent fan coils in each cabin and saloon. 36,000 BTU cooling and 39,600 BTU heating

Forced air ventilation system draws air from throughout the boat and exhausts through transom area Galley exhaust fan. Separate engine room and battery box ventilation systems

Drainage Systems

Grey water from washbasins, showers, condensing water from air conditioning and freezer/fridge is collected to transfer pumps and pumped out above waterline

Black water is collected in 3x 40L holding tanks (one for each head) and pumped out via 24v pump

All heads are Tecma Silence 24v, fresh water flushing

Four separate bilge areas are emptied using 24v electric or Whale manual pumps automatic bilge pumps in main saloon and lazarette

ELECTRICAL SYSTEM

DC System

The DC-system is based on Multiplexing Technology. The CAN-technology allows distributed switching and protection of electrical loads. All functions can be controlled and monitored on a touch screen

- Service battery bank 24v 480 Ah / 5h – gel type batteries
- Handling system batteries 24v 75Ah / 20h – gel type batteries
- Engine and generator starting batteries 12v 75A / 20h
- LED overhead and indirect lighting throughout boat
- Lopolight LED navigation lights
- Masthead tri-colour

AC System

The AC system is a 230 V 50/60 Hz single-phase three-wire. The 230V can be powered by the diesel generator or by shore connection

There are also a number of 230 V 50 Hz appliances powered by a DC/AC inverter.

230v 50A Shore Power system

Chargers/Inverters

- One Mastervolt 24v 100A battery charger for service battery bank

- Two Mastervolt Magic 24/24 20A DC//DC chargers between service and handling battery banks
- 110A 24V alternator on main engine for DC battery charging
- Alternators on engine and generator for charging start batteries
- Mastervolt 24/2500 Inverter supplying AC consumers Mastervolt
- Separate inverter for the Dell computer 230/350VA 50 Hz Mastervolt 24/350AC

Monitoring System

The following alarms are displayed on the touch screen including an audio signal at the helm:

- Bilge levelshigh
- Black water tank levelsfull
- Water pressure pumps rundry
- Deck wash pump rundry
- Water in fuelseparators
- Low battery voltage, service batterybank
- Low battery voltage, handling system batterybank Navigation light failure (side, stern and motoringlights)
- LPGleakage
- Generatoroverload
- Levelmetering:
 - Watertanks
 - Fueltanks
 - Black watertanks

ELECTRONIC SYSTEMS

Sailing instruments

- B&G H3000 Performance Sailing Instruments comprised of:
 - B&G H3000 Hercules Motion mainprocessor.
 - One multifunction GFD at the navigation station
 - One GFD display positioned on port steering console
 - 4x 20/20 displays mounted on Halls Spars mast bracket below gooseneck
 - Vertical Mastheadunit
 - Flush mounted boat speed sensor
 - Halcyon gyrocompass

Navigation Instruments

Furuno NavNet navigation system. System includes multifunction display on both port and starboard steering consoles and black-box Furuno at the navigation station connected to the LCD display at the nav station. Furuno system is controlled by a trackball positioned at the nav

station

Integrated Furuno radar with 4Kw 60cm radome mounted on front of mast

Autopilot System

- B&G autopilot with one GPD control on starboard steering pedestal
- Dedicated continuous running 24v Marsili/Bosch Rexroth power pack driving Marsili cylinder
- Autopilot pump and cylinder removable, 2 pcs quick connection on hydraulic hoses

Computer Systems

Dell OptiPlex 780 ultra compact computer connected to 15.6-inch widescreen monitor at nav station Internal wireless local area network (WLAN) available throughout the yacht and deck.

The Dell computer is connected to the network allowing tactical software control from an iPad or equivalent.

Communications Systems

- Fleet Broadband 250 satellite communications system with antenna on pushpit and handset at nav station
- Simrad HS-90 VHF/DSC with additional handset and speaker in cockpit
- Lightweight VHF antenna AC Marine CELmar VHF onmasthead
- Class B AIS transponder, Simrad NAIS-400 including GPS and VHF antenna splitter
- Simrad NSPL-400. System connected to VHF antenna on mast top. GPS is antenna positioned on

Entertainment Systems

Yamaha CRX-330 with docking station connected to Russound splitter for transfer to 2x pairs of B&W speakers in the saloon and one pair of Bose speakers in cockpit.

MAST & RIGGING

- Two-spreader Hall Spars carbon fibre mast
- Harken Switch track Mast jack cylinder with manual pump. Swept spreaders 21 degrees
- Hall Spars V-Boom in carbon fibre allowing up to three reefs, clear coat
- Reckmann UD3 Sphere electric head stay furler
- Boom vang
- Holmatro HVG-40 BRacing headstay and tuff luff foil
- Removable carbon fibre bowsprit with bobstay for racing
- Removable mast jack and pump

Sail Areas

- Fore Triangle 90.1m 970 sp.ft.
- Main Sail 125.86m 1355 sq.ft
- Jib 95m 1023 sq.ft
- Assy Spi 320m 3444 sq.ft

Running Rigging

Custom running rigging inventory available by request

EQUIPMENT

General Equipment

- Transport and storage cradle
- Folding carbon gangway
- Winch handles
- Basic tools for engine and generator maintenance
- Basic spare parts for engine and generator
- Suction lifters for floorboards
- Sounding rods for fuel and water tanks
- Flagpole
- Boarding ladder

Anchoring and Mooring

- Anchor windlass Lewmar V6 with remote control on foredeck, removable for racing with GRP cover. Folding anodized aluminium anchor arm, supported by gas spring
- One CQR 75lbs (34Kg) galvanized anchor on folding arm
- 80m – 12mm high tensile anchor chain
- One Fortress 21.2Kg alloy anchor
- 5m 10mm chain with 50m 18mm nylon rhode for Fortress anchor
- Assorted mooring lines
- Assorted fenders
- Boathook

Safety Equipment

Inventory of safety equipment available on request

SAILS – All by North Sails

Mainsails	Year Material / Notes	Location
Offshore main	2014 Carbon Spectra panel , SGM logo	Onboard
Inshore main		Hangar
Upwind		
5x Jibs		Hangar
Genoa Staysail		
Downwind		
4x Spi		Hangar
Code Zero		Hangar
Storm Sails		
Storm Jib		Hangar

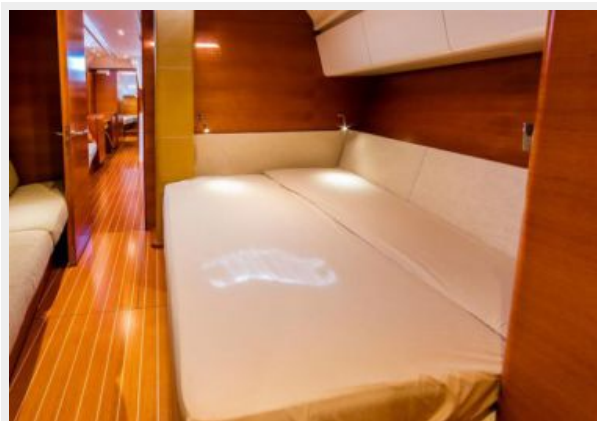
Исключения

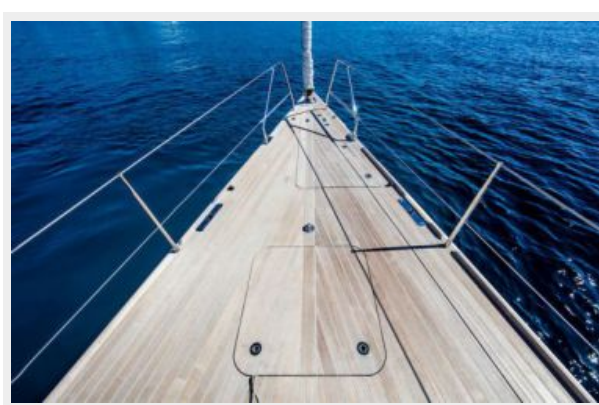
При продаже яхты исключаются личные вещи владельца.

Отказ от ответственности

Компания предоставляет описание судна или яхты добросовестно, но не может гарантировать точность этой информации, а также не ручается за техническое состояние. Покупатель должен проинструктировать своих агентов или оценщиков исследовать представленную информацию более подробно, по собственному желанию. Продажа судна или яхты, изменение цены или снятие с продажи будет происходить без предварительного уведомления.

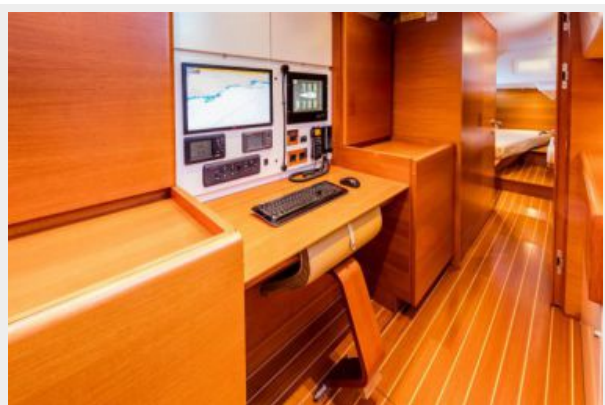
ФОТОГРАФИИ

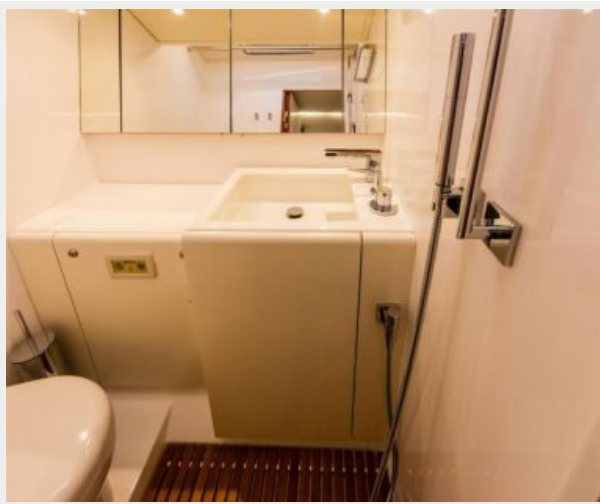
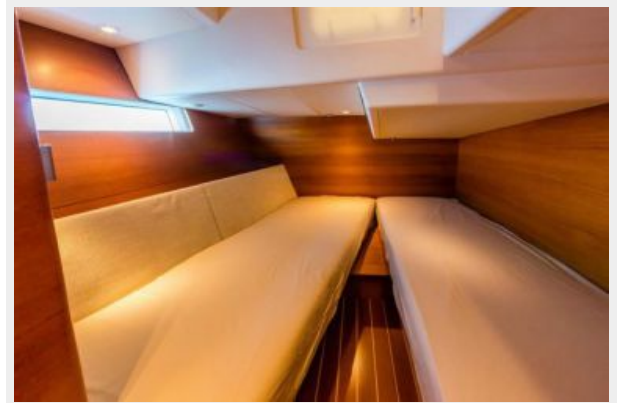


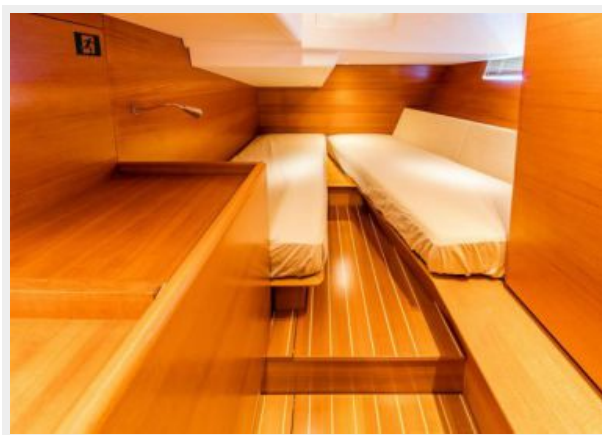












КОНТАКТЫ

Андрей Шестаков (Andrey Shestakov) – ведущий яхтенный брокер отдела продаж яхт и судов компании Shestakov Yacht Sales Inc. Официальный представитель Shestakov Yacht Sales Inc. для русскоговорящих клиентов в центральном офисе компании в Майами/Форт Лодердейл/Флорида/США.

Контактная информация

Email: andrey@shestakovyachtsales.com

Web: shestakovyachtsales.com

Телефоны

Краснодарский край: **+7(918)465-66-44**

США, Майами, Флорида: **+1(954)274-4435**

Время работы

Понедельник – Суббота: **9:00 - 21:00**
EDT

Воскресенье: **Закрето**

Адрес



Harbour Towne Marina, 850 NE 3rd St,
STE 213, Dania, FL 33004